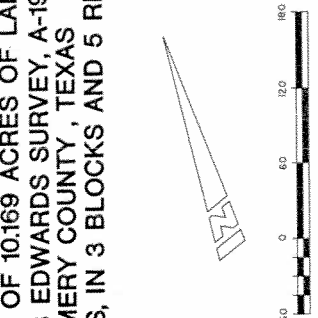


LONGMIRE ON LAKE CONROE SECTION TWO

A SUBDIVISION OF 10.169 ACRES OF LAND
IN THE JAMES EDWARDS SURVEY, A-190
MONTGOMERY COUNTY, TEXAS
CONTAINING 27 LOTS, IN 3 BLOCKS AND 5 RESERVES

LAKE CONROE



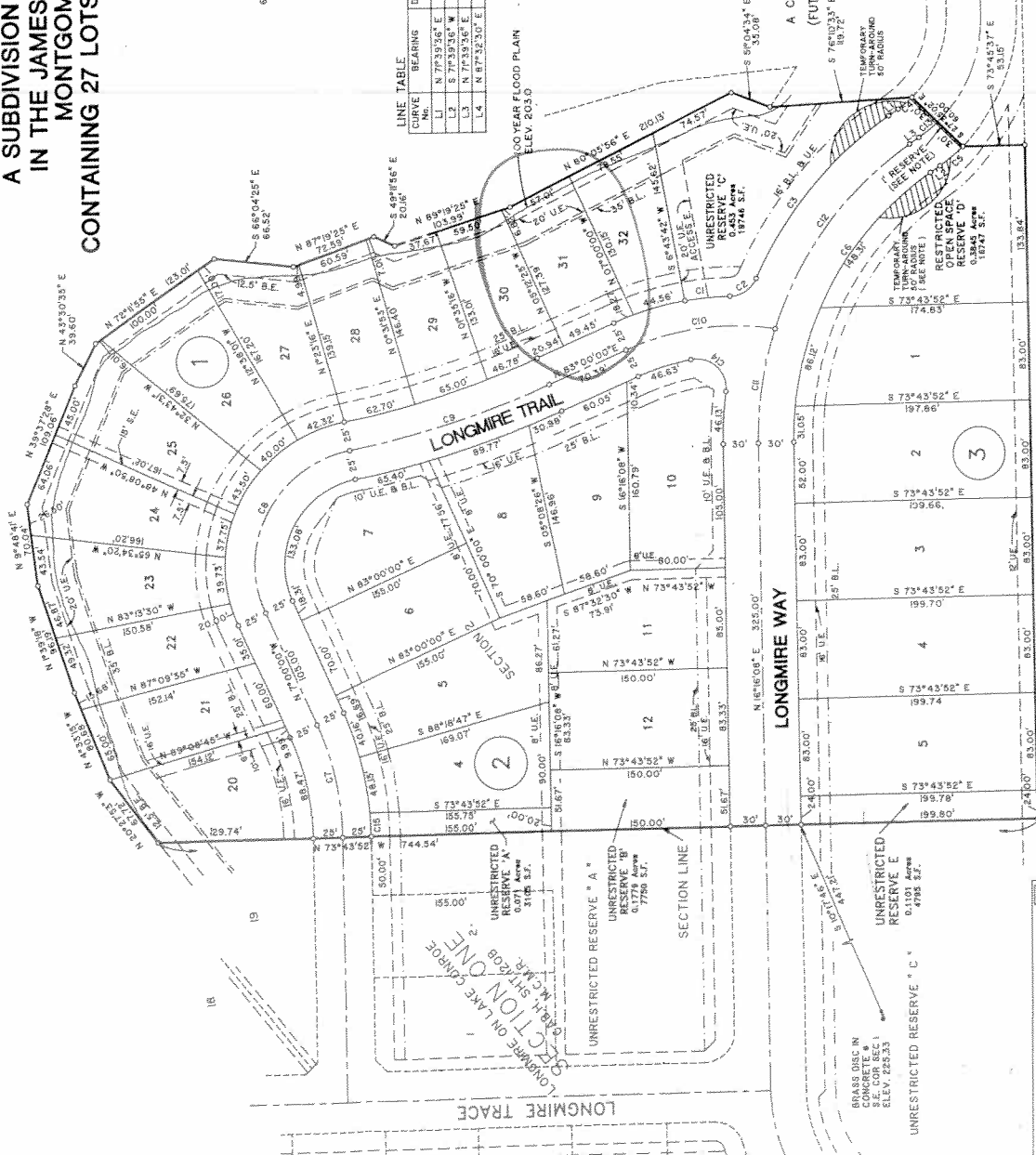
SCALE IN FEET

LINE TABLE

CURVE No.	BEARINGS	DISTANCE
L1	N 77°39'36" E	9.72'
L2	S 77°39'36" W	9.72'
L3	N 77°39'36" E	9.72'
L4	N 87°32'30" E	43.29'

CURVE DATA

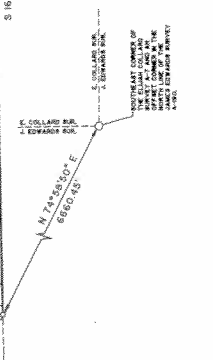
CURVE No.	RADIUS	DELTA	ARC BEARING	CHORD LENGTH
C1	244.65'	87°54'27"	S 77°49'44" E	39.00'
C2	25.00'	26.63'	N 59°40'18" E	17.04'
C3	33.00'	34.38'	N 67°02'17" E	15.86'
C4	15.57'	104.30'	S 67°02'17" E	15.86'
C5	216.00'	56°32'28"	S 47°57'52" W	255.63'
C6	242.84'	23°46'06"	N 47°36'04" E	97.95'
C7	98.76'	103°22'40"	N 47°36'04" E	154.99'
C8	77.27'	15°22'40"	N 89°47'20" E	179.91'
C9	28.65'	33°37'28"	S 89°47'20" E	127.06'
C10	305.00'	87°44'07"	N 89°47'20" E	98.47'
C11	305.00'	35°49'21"	N 53°42'38" E	192.85'
C12	125.57'	107°14'36"	S 20°42'17" E	20.40'
C13	25.00'	107°14'36"	S 29°38'33" E	40.26'
C14	257.84'	91°16'36"	N 11°07'40" E	200.00'



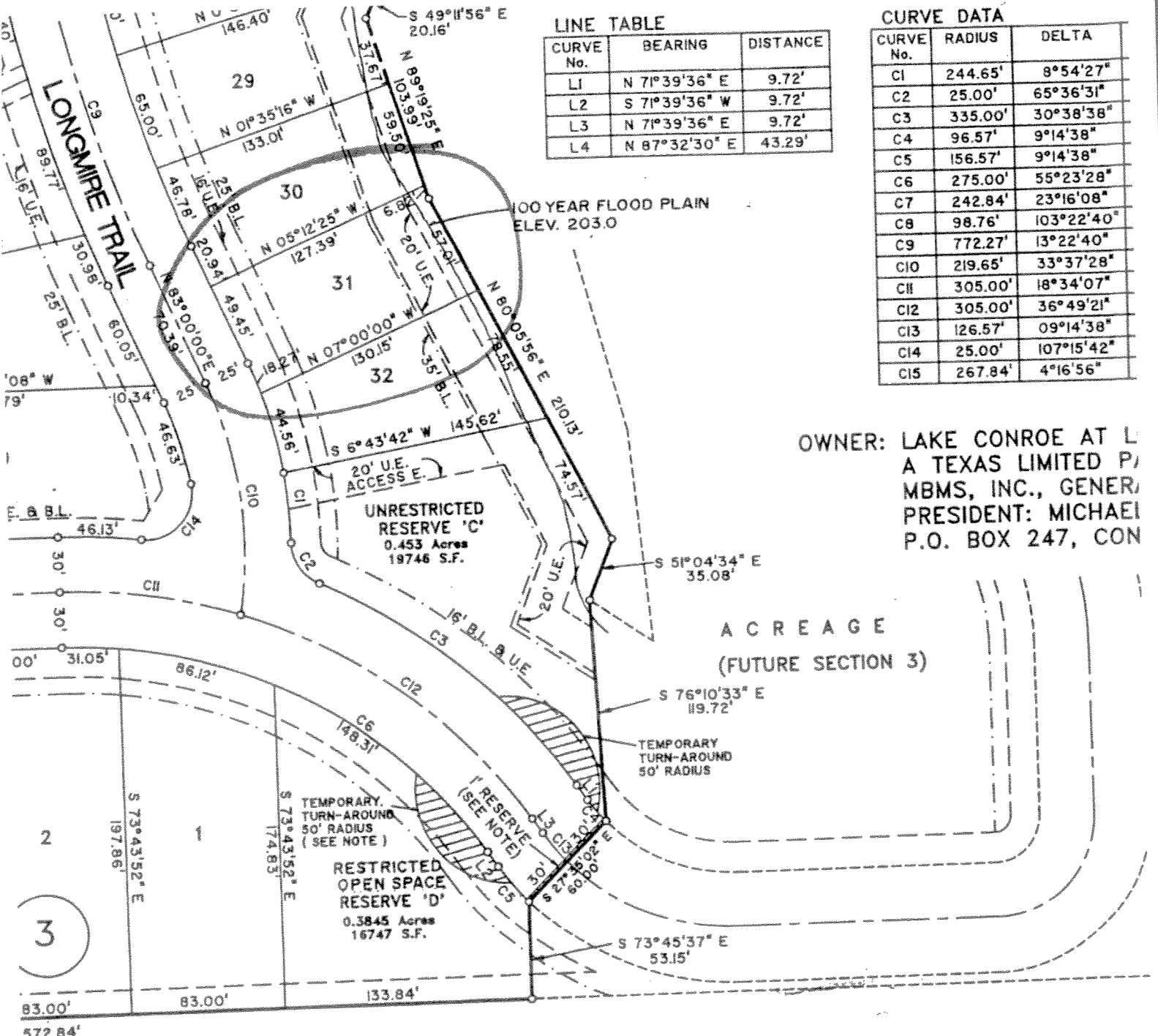
OWNER: LAKE CONROE AT LONGMIRE GROUP, LTD.
A TEXAS LIMITED PARTNERSHIP
MEMBERS, INC., GENERAL PARTNER
PRESIDENT: MICHAEL B. STOECKER
P.O. BOX 247, CONROE, TEXAS 77305

- NOTES:
1. THIS PLAN WAS PREPARED BY ME OR UNDER MY CLOSE PERSONAL SUPERVISION AND I AM A LICENSED SURVEYOR IN THE STATE OF TEXAS.
 2. MAP RECORDS MONTGOMERY COUNTY.
 3. MAP RECORDS MONTGOMERY COUNTY.
 4. ALL DISTANCES ARE IN FEET AND DECIMALS THEREOF.
 5. ALL BEARINGS ARE TRUE BEARINGS.
 6. W.L.E. INDICATES WATER LINE EASEMENT.
 7. W.L.E. INDICATES WATER LINE EASEMENT.
 8. W.L.E. INDICATES WATER LINE EASEMENT.
 9. W.L.E. INDICATES WATER LINE EASEMENT.
 10. W.L.E. INDICATES WATER LINE EASEMENT.
 11. W.L.E. INDICATES WATER LINE EASEMENT.
 12. W.L.E. INDICATES WATER LINE EASEMENT.
 13. W.L.E. INDICATES WATER LINE EASEMENT.
 14. W.L.E. INDICATES WATER LINE EASEMENT.
 15. W.L.E. INDICATES WATER LINE EASEMENT.
 16. W.L.E. INDICATES WATER LINE EASEMENT.
 17. W.L.E. INDICATES WATER LINE EASEMENT.
 18. W.L.E. INDICATES WATER LINE EASEMENT.
 19. W.L.E. INDICATES WATER LINE EASEMENT.
 20. W.L.E. INDICATES WATER LINE EASEMENT.
 21. W.L.E. INDICATES WATER LINE EASEMENT.
 22. W.L.E. INDICATES WATER LINE EASEMENT.
 23. W.L.E. INDICATES WATER LINE EASEMENT.
 24. W.L.E. INDICATES WATER LINE EASEMENT.
 25. W.L.E. INDICATES WATER LINE EASEMENT.
 26. W.L.E. INDICATES WATER LINE EASEMENT.
 27. W.L.E. INDICATES WATER LINE EASEMENT.
 28. W.L.E. INDICATES WATER LINE EASEMENT.
 29. W.L.E. INDICATES WATER LINE EASEMENT.
 30. W.L.E. INDICATES WATER LINE EASEMENT.
 31. W.L.E. INDICATES WATER LINE EASEMENT.

D.A. VOGT ENGINEERING
1544 Southwest Road, Suite 100, Houston, Texas 77060
(713) 961-0947



File # 9601763 Cab. H. Sheet 158 B



LINE TABLE

CURVE No.	BEARING	DISTANCE
L1	N 71°39'36" E	9.72'
L2	S 71°39'36" W	9.72'
L3	N 71°39'36" E	9.72'
L4	N 87°32'30" E	43.29'

CURVE DATA

CURVE No.	RADIUS	DELTA
C1	244.65'	8°54'27"
C2	25.00'	65°36'31"
C3	335.00'	30°38'38"
C4	96.57'	9°14'38"
C5	156.57'	9°14'38"
C6	275.00'	55°23'28"
C7	242.84'	23°16'08"
C8	98.76'	103°22'40"
C9	772.27'	13°22'40"
C10	219.65'	33°37'28"
C11	305.00'	18°34'07"
C12	305.00'	36°49'21"
C13	126.57'	09°14'38"
C14	25.00'	107°15'42"
C15	267.84'	4°16'56"

OWNER: LAKE CONROE AT L
 A TEXAS LIMITED P
 MBMS, INC., GENER
 PRESIDENT: MICHAEL
 P.O. BOX 247, CON

ACREAGE
 (FUTURE SECTION 3)

FREE 321.47 ACRES
 VOL. 802, PG. 261
 M.C.D.R.

VOGT ENGINEERING
 1544 Sawdust Road, Suite 180 The Woodlands, Texas 77380
 (713) 387-0947

- NOTES:
- M.C.M.R. INDICATES MONTGOMERY COUNTY MAP RECORDS.
 - DIMENSIONS SHOWN ALONG CURVES ARE ARC LENGTHS.
 - U.E. INDICATES UTILITY EASEMENT.
 - B.L. INDICATES BUILDING LINE.
 - S.E. INDICATES STORM SEWER EASEMENT.
 - W.L. INDICATES WATER LINE EASEMENT.
 - D.E. INDICATES DRAINAGE EASEMENT.
 - B.E. INDICATES BULKHEAD EASEMENT.
 - ACCESS E. INDICATES ACCESS EASEMENT.
 - CROSS-HATCHED AREA IS FOR A TEMPORARY TURN-AROUND UNTIL THE STREET IS EXTENDED IN A RECORDED PLAT.
 - S.Y. B.L. = 5'; R.Y. B.L. = 10' UNLESS OTHERWISE NOTED.
- NOTE:
 ONE FOOT RE
 SEPARATION I
 STREETS ARE
 DEDICATION I
 IN A RECORD
 BECOME VEST
 AND THE FEE
 DEDICATOR, N

