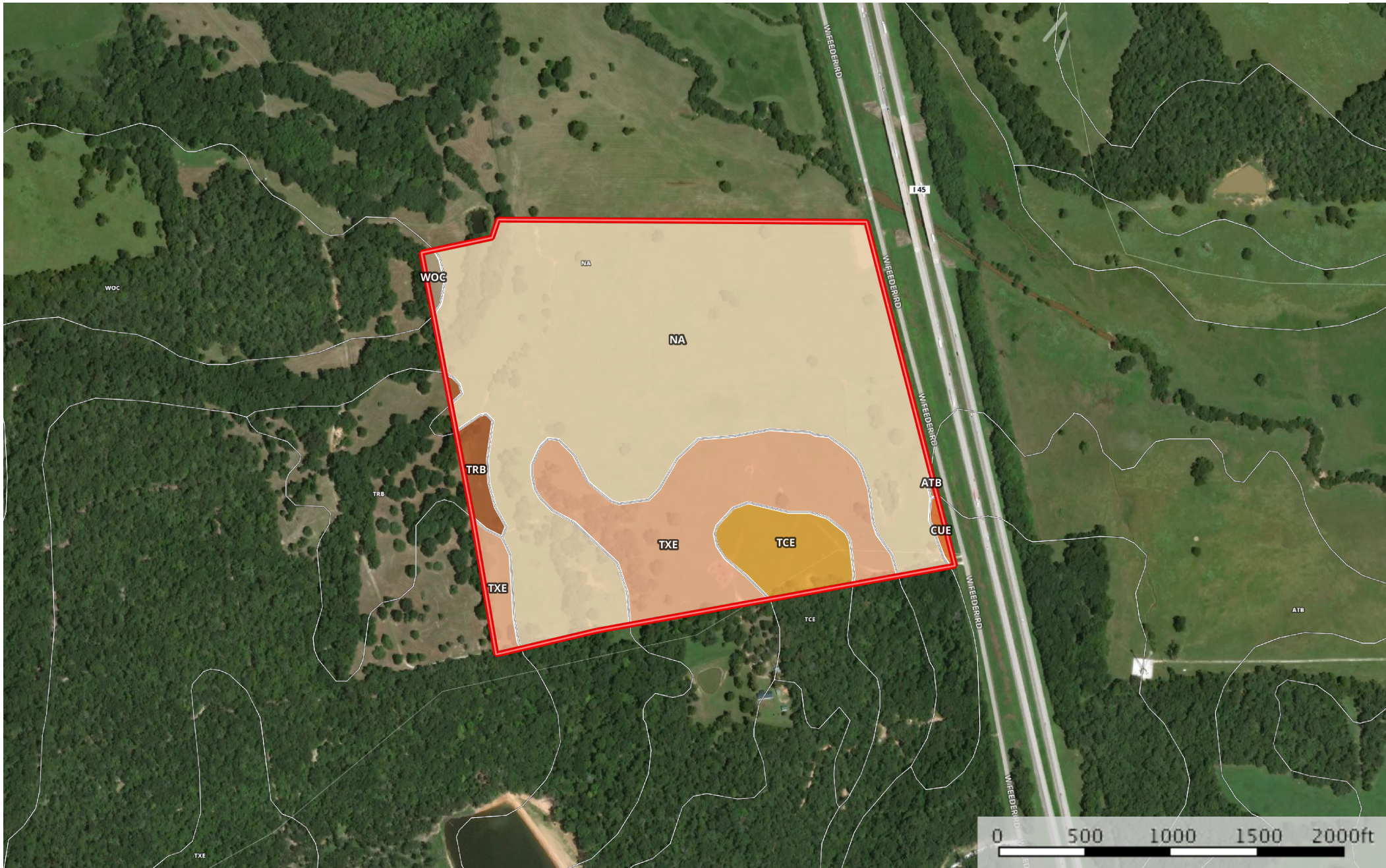



# 99 acres Centerville

Leon County, Texas, 99 AC +/-



 Boundary

|  Boundary 99.8 ac

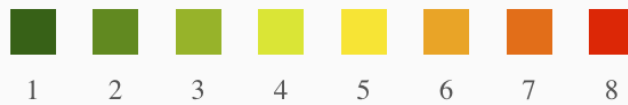
SOIL CODE	SOIL DESCRIPTION	ACRES	%	CAP
AtB	Attoyac fine sandy loam, 0 to 3 percent slopes	0.1	0.07	2e
CuE	Cuthbert fine sandy loam, 5 to 20 percent slopes	0.4	0.4	6e
Na	Nahatche loam, frequently flooded	70.5	70.62	5w
TcE	Tenaha-Cuthbert complex, 8 to 20 percent slopes	5.4	5.41	-
TrB	Trawick fine sandy loam, 1 to 5 percent slopes	1.9	1.88	3e
WoC	Wolfpen loamy fine sand, 1 to 8 percent slopes	0.5	0.49	3e
TxE	Trawick-Bub complex, 8 to 20 percent slopes	21.1	21.12	6e
TOTALS		99.8	100%	4.9

### Capability Legend

Increased Limitations and Hazards

Decreased Adaptability and Freedom of Choice Users

Land, Capability  
Class(non-irrigated)



'Wild Life'	•	•	•	•	•	•	•	•
Forestry	•	•	•	•	•	•	•	
Limited	•	•	•	•	•	•	•	
Moderate	•	•	•	•	•	•		
Intense	•	•	•	•	•			
Limited	•	•	•	•				
Moderate	•	•	•					
Intense	•	•						
Very Intense	•							

### Grazing Cultivation

(c) climatic limitations (e) susceptibility to erosion

(s) soil limitations within the rooting zone (w) excess of water