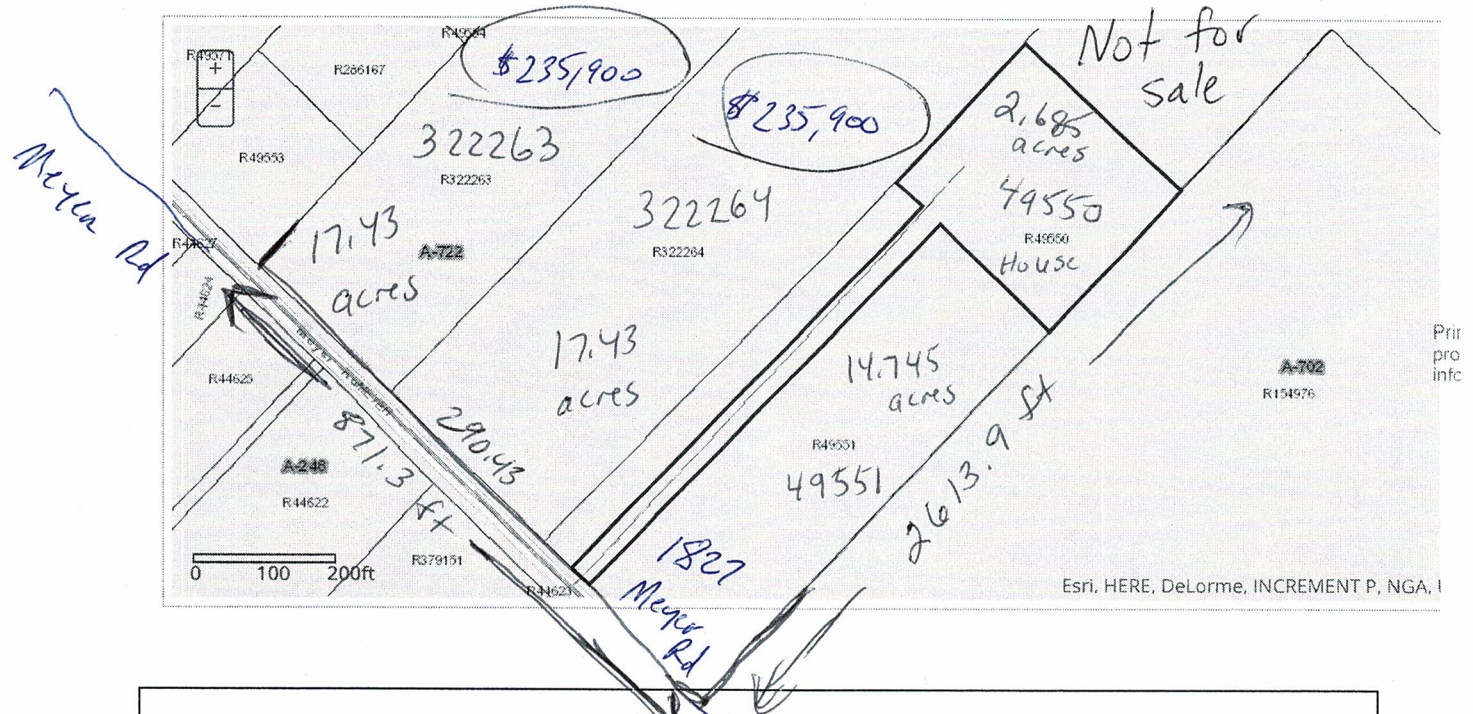


Property Owner: DENNIS HARRY J & PAMELA A  
Property Address: 1827 MEYER RD, BEASLEY, TX 77417

2016 Assessed Value: \$103,460



DISCLAIMER

Every effort has been made to offer the most current and correct information possible on these pages. The information included on these pages has been compiled by County staff from a variety of sources, and is subject to change without notice. The Fort Bend Central Appraisal District makes no warranties or representations whatsoever regarding the quality, content, completeness, accuracy or adequacy of such information and data. The Fort Bend Central Appraisal District reserves the right to make changes at any time without notice. Original records may differ from the information on these pages. Verification of information on source documents is recommended. By using this application, you assume all risks arising out of or associated with access to these pages, including but not limited to risks of damage to your computer, peripherals, software and data from any virus, software, file or other cause associated with access to this application. The Fort Bend Central Appraisal District shall not be liable for any damages whatsoever arising out of any cause relating to use of this application, including but not limited to mistakes, omissions, deletions, errors, or defects in any information contained in these pages, or any failure to receive or delay in receiving information said or implied.