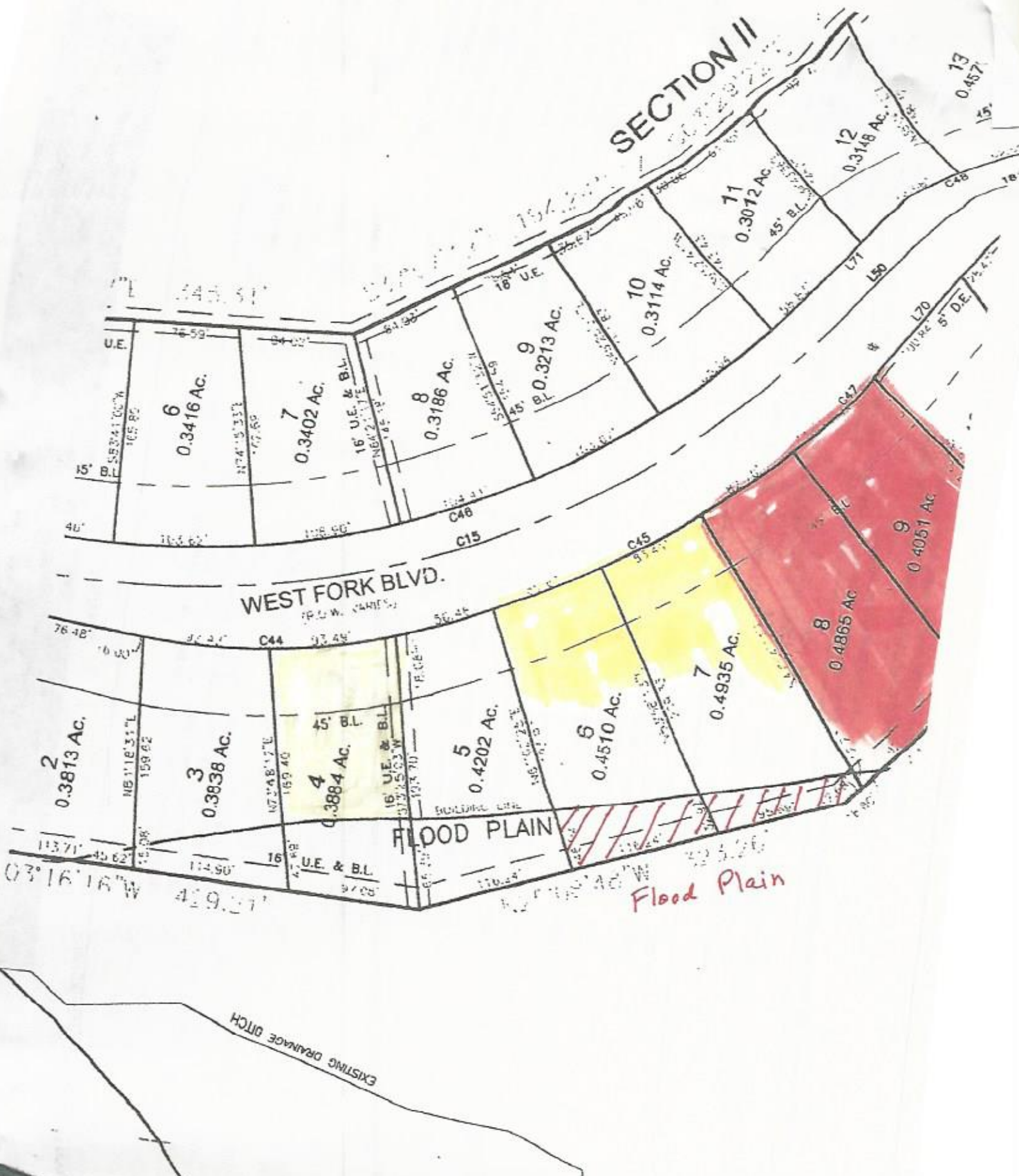


SECTION II



6
0.3416 Ac.

7
0.3402 Ac.

8
0.3186 Ac.

9
0.3213 Ac.

10
0.3114 Ac.

11
0.3012 Ac.

12
0.3148 Ac.

13
0.4571

WEST FORK BLVD.

FLOOD PLAIN

Flood Plain

EXISTING DRAINAGE DITCH

2
0.3813 Ac.

3
0.3838 Ac.

4
0.3884 Ac.

5
0.4202 Ac.

6
0.4510 Ac.

7
0.4935 Ac.

8
0.4865 Ac.

9
0.4051 Ac.

03°16'16"W

419.31'

12°16'40"W

505.26'