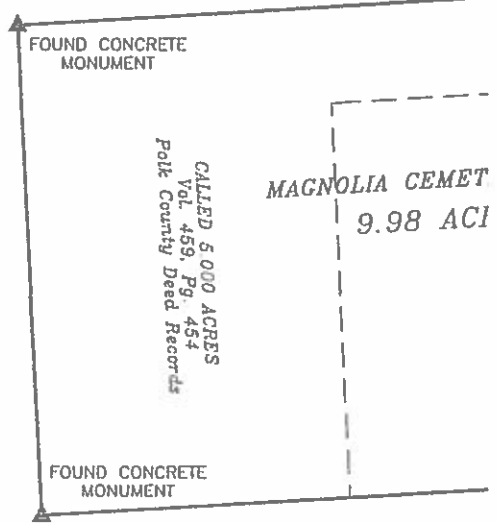


PETE & CATHY GARLAND LIVING TRUST
 AGREEMENT NUMBER ONE (1)
 PETE R. GARLAND and CATHY A. GARLAND, TRUSTEES
 EXHIBIT D-TRACT I - Part of 818.622 Acres
 Volume 1795, Page 186
 Polk County Official Records



LEONARD HORNSBY SURV

- 1 - \$29,900
- 2 - \$29,900
- 3 - \$35,900
- 4 - \$39,900
- 5 - \$49,900
- 6 - \$51,900
- 7 - \$49,900
- 8 - \$51,900
- 9 - \$42,900
- 10 - \$38,900
- 11 - \$31,900
- 12 - \$29,900
- 13 - \$29,900

AARON M. RAYBORN
 16.8 ACRES
 Volume 1908, Page 810
 Polk County Official Records

SHERMAN L. TYNER and BONNIE S. TYNER
 10,000 Acres
 Vol. 1188, Pg. 216
 Polk County Official Records

SHERMAN L. TYNER and BONNIE S. TYNER
 11,286 Acres
 Vol. 1188, Pg. 211
 Polk County Official Records

JUNE BURKS, SR.
 3,934 Acres
 Vol. 933, Pg. 615
 Polk County Official Records

J. BURKS
 0.072 ACRE
 Vol. 1022, Pg. 241
 Polk County Official Records

TEXAS EASTERN
 TRANSMISSION CORP.
 PIPELINE EASEMENTS
 & Vol. 840, Pg. 480
 Polk County Deed Records

LINE	BEARING	DISTANCE
L1	N 42°56'07" E	214.64'
L2	N 30°21'44" E	105.83'
L3	S 09°38'03" E	53.88'
L4	S 13°39'26" E	78.00'
L5	S 32°53'12" E	39.41'
L6	S 41°09'35" E	58.49'
L7	S 41°09'35" E	105.50'
L8	S 41°09'35" E	84.69'
L9	S 05°20'23" W	67.87'
L10	S 03°37'23" E	192.14'
L11	N 59°48'30" W	42.32'

A. M. DE LA JARZA SURVEY
 F. M. HIGHWAY No. 356
 PETE & CATHY GARLAND LIVING TRUST
 AGREEMENT NUMBER ONE (1)
 PETE R. and CATHY A. GARLAND, TRUSTEES
 EXHIBIT D-TRACT I - Part of 818.622 Acres
 Vol. 1795, Pg. 186
 Polk County Official Records

Approximate Location of
 50 Ft. Wide PIPELINE CO.
 EASEMENT (Tract WTC
 Vol. 233, Pg. 54, Polk County Deed h