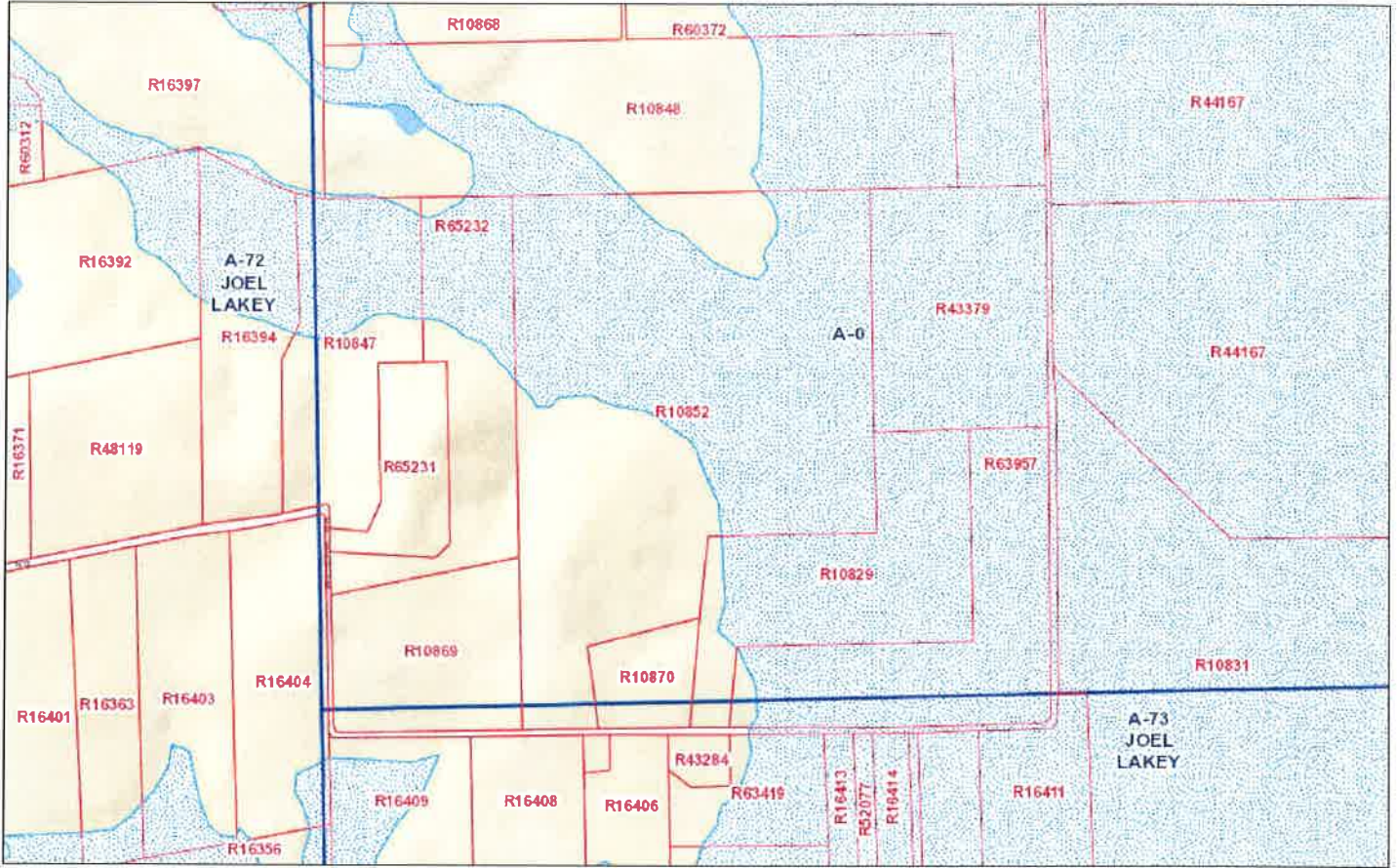





# Map Title

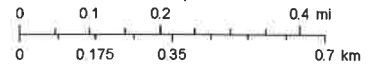


March 14, 2016

Disclaimer: This product is for informational purposes only and has not been prepared for or is suitable for legal, engineering, or surveying purposes. It does not represent an on-the-ground survey and represents only the approximate relative location of boundaries.

1:12,846

-  Parcels
-  Abstracts
-  Flood Plain



Sources: Esri, HERE, DeLorme, USGS, Intermap, Incentiv P Corp., NRCAN, Esri Japan, METI, Esri China (Hong Kong), Esri (Thailand).

Washington County Appraisal District & BIS Consulting - [www.bisconsultants.com](http://www.bisconsultants.com)

This product and relative contents are the property of the respective governmental entity and BIS Consultants. Use is restricted for official purposes.