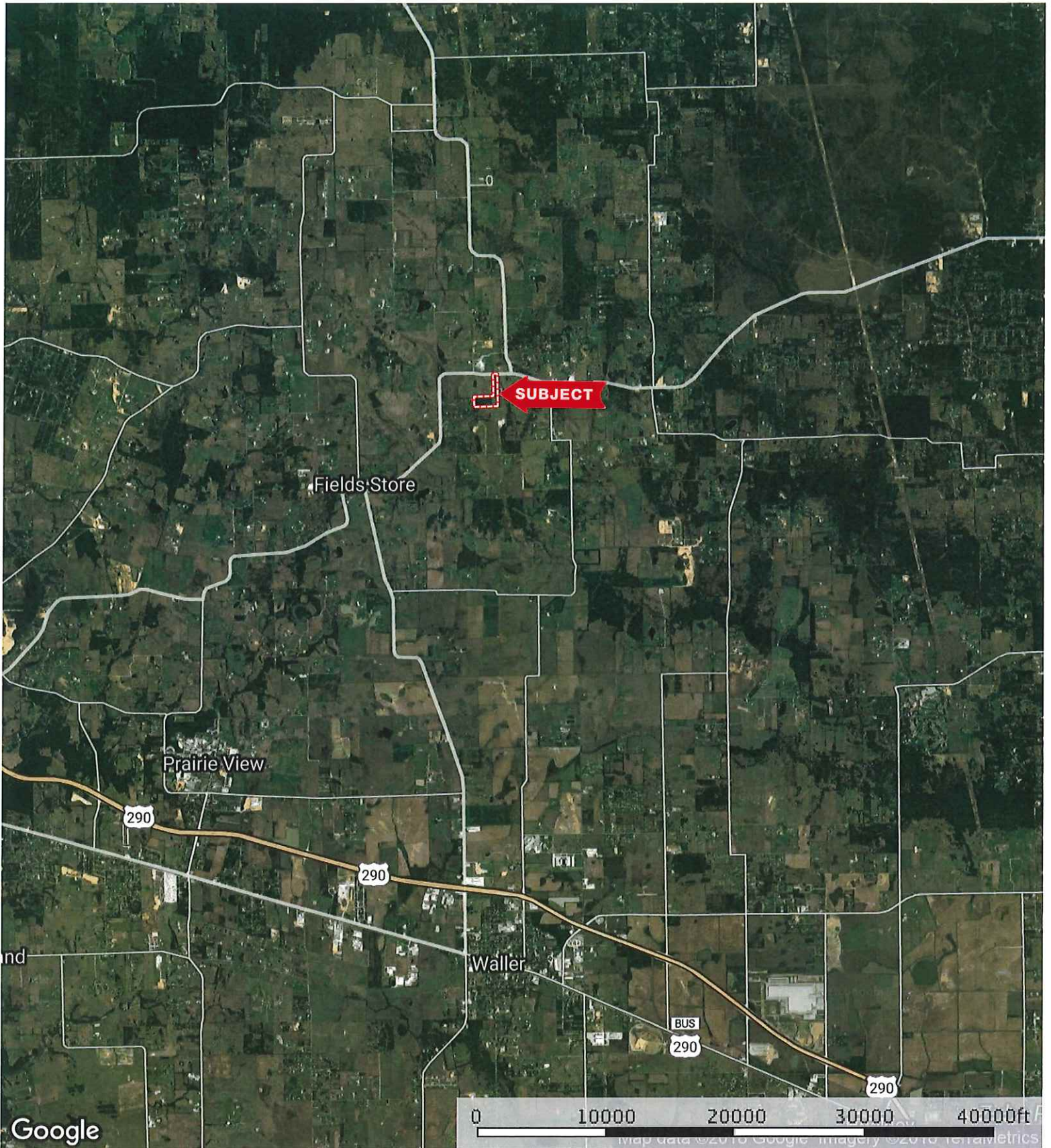




FM 1488/Giboney

Waller County, Texas, 35.12 AC +/-



 Boundary

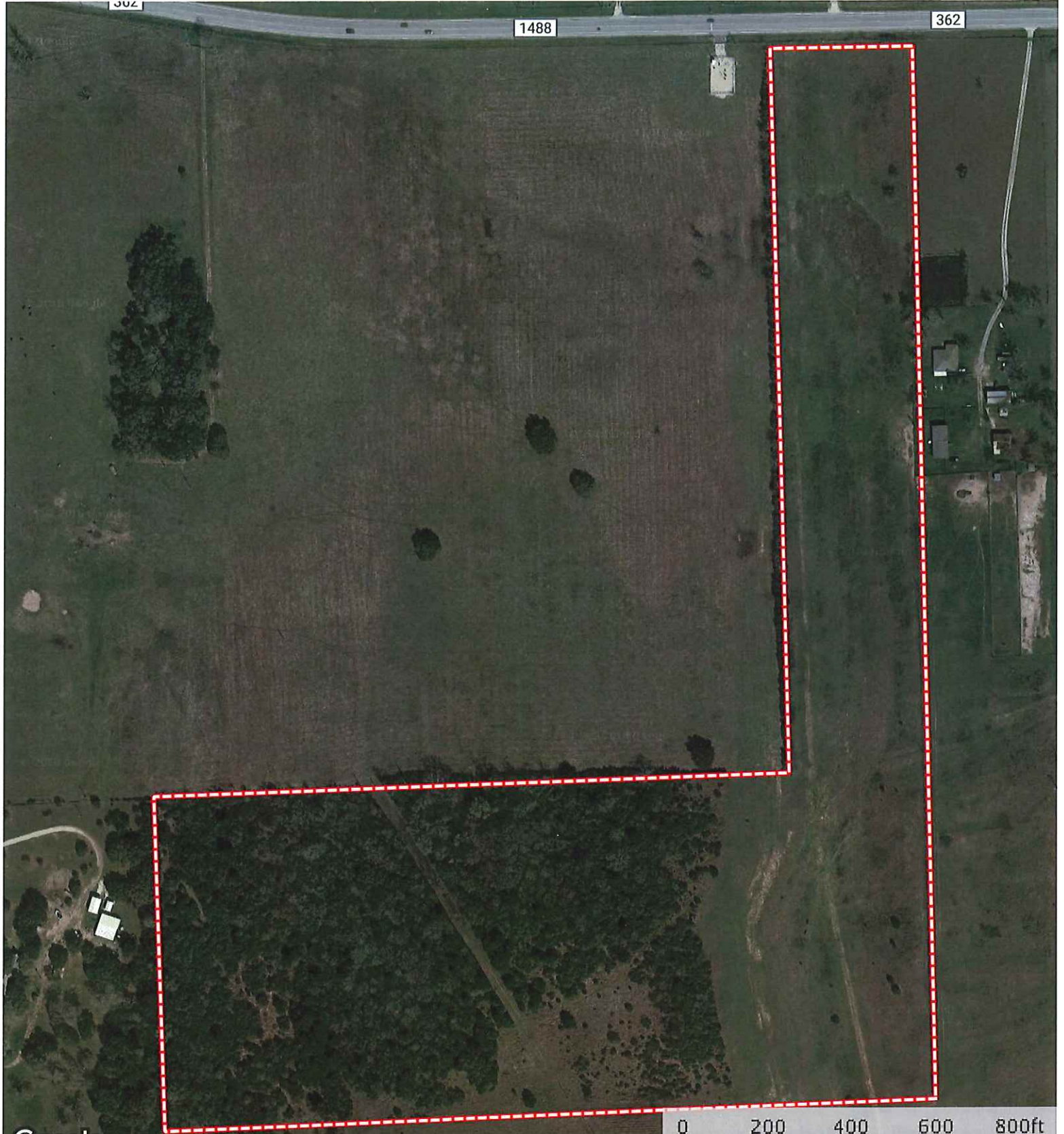
FM 1488/Giboney

Waller County, Texas, 35.12 AC +/-

302

1488


362



Google

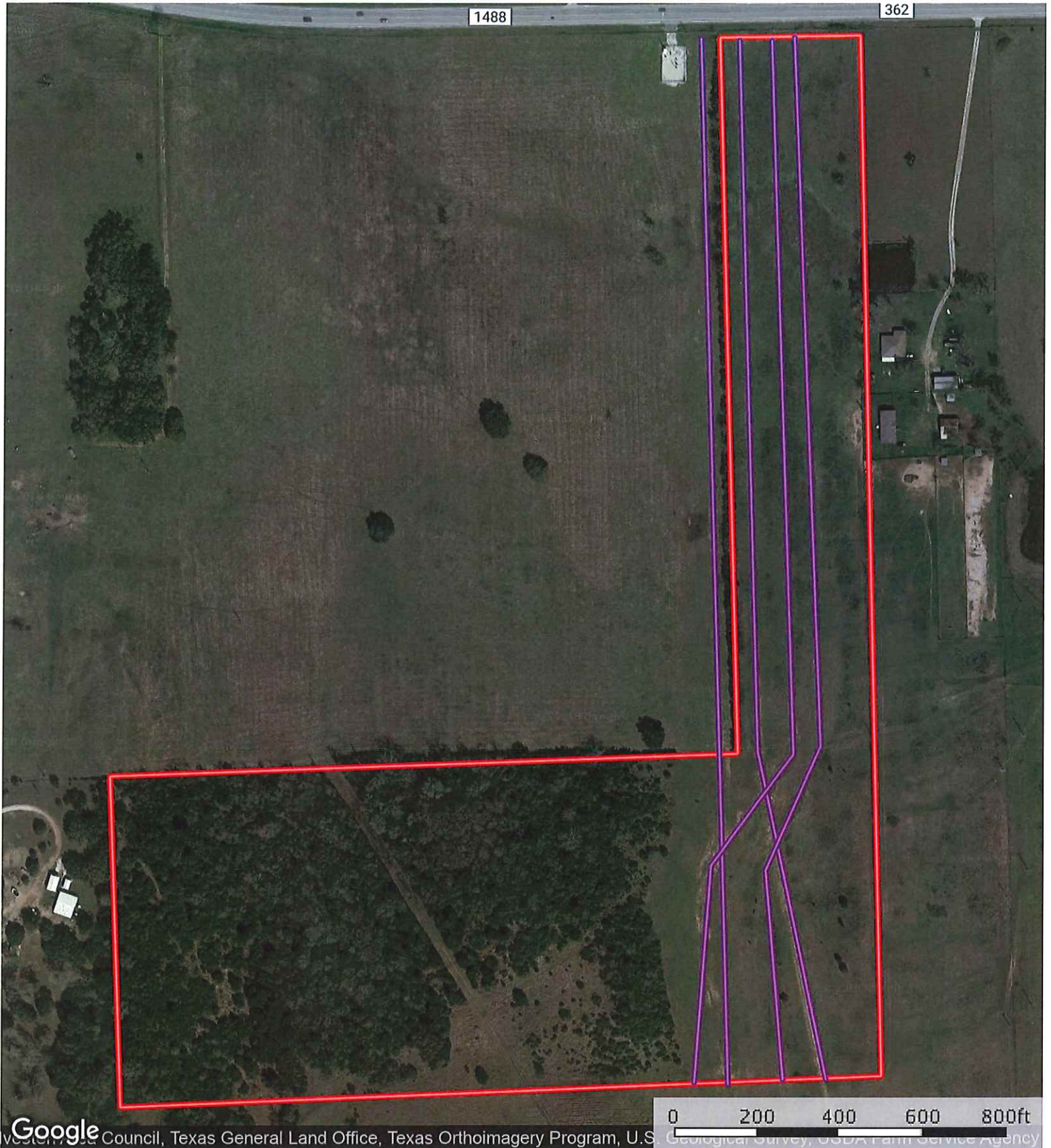
Map data © 2022 Google, Microsoft, OpenStreetMap contributors, Esri, DeLorme, Swire, SwireHeliports, United States Geological Survey, USDA Farm Service Agency, Texas General Land Office, Texas Orthoimagery Program, U.S. Geological Survey, USDA Farm Service Agency

 Boundary

 The information contained herein was obtained from sources deemed to be reliable. MapRight Services makes no warranties or guarantees as to the completeness or accuracy thereof.

FM 1488/Giboney

Waller County, Texas, 35.12 AC +/-



Google

Waller County Council, Texas General Land Office, Texas Orthoimagery Program, U.S.

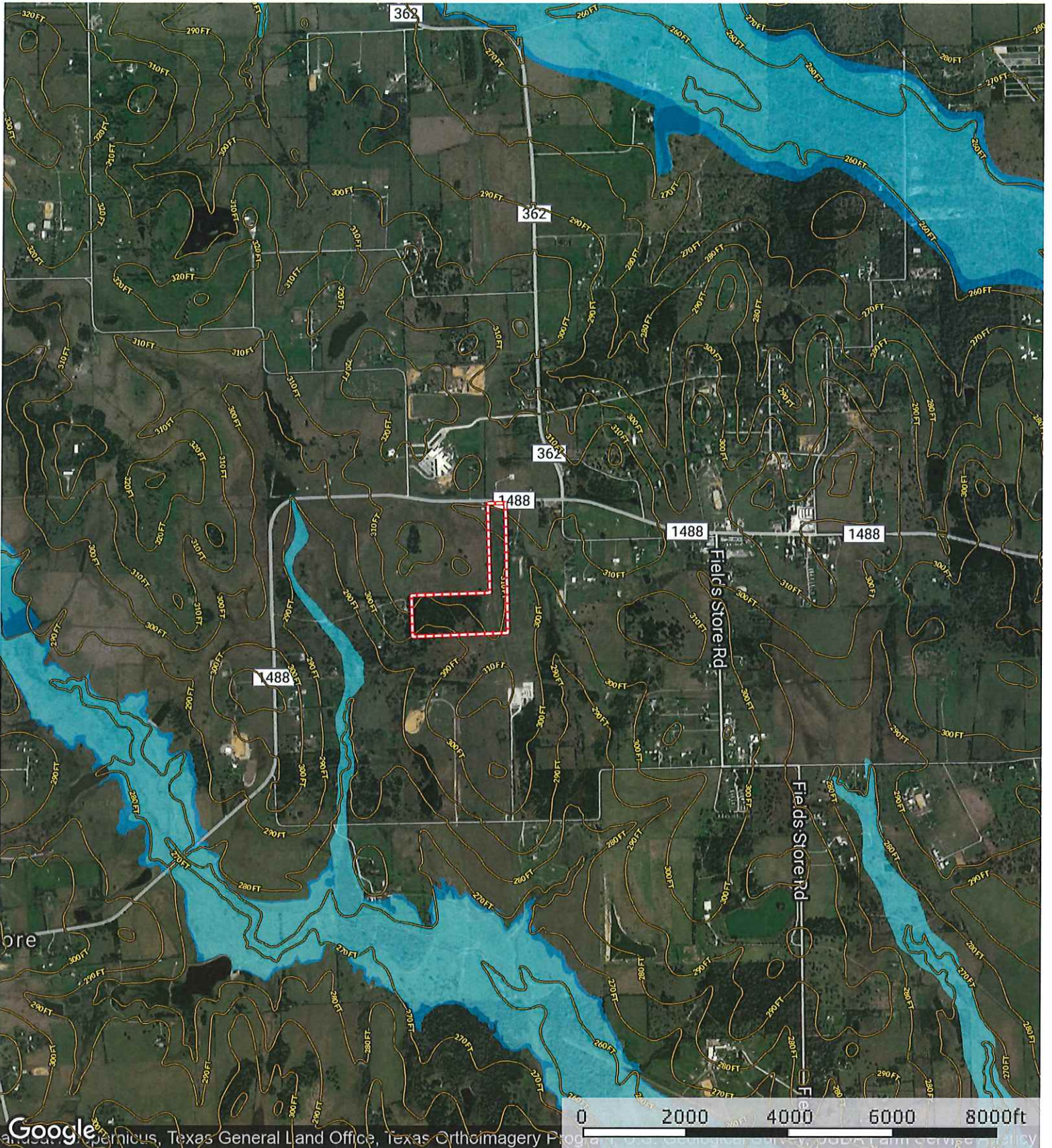
0 200 400 600 800ft  
Geological Survey, USDA Farm Service Agency

— Pipeline    ▣ Boundary

**M** The information contained herein was obtained from sources deemed to be reliable. MapRight Services makes no warranties or guarantees as to the completeness or accuracy thereof.

# FM 1488/Giboney

Waller County, Texas, 35.12 AC +/-



Boundary    100 Year Floodplain    500 Year Floodplain