

GRAPHIC SCALE

(IN FEET)
1 inch = 30 ft.

ARCHIBALD HODGE SURVEY, A-18 MONTGOMERY COUNTY, TEXAS

REMANES OF THE
JOHN R. JONES, ET UX
CALLED 4.000 ACRES
C.F. NO. 8119545

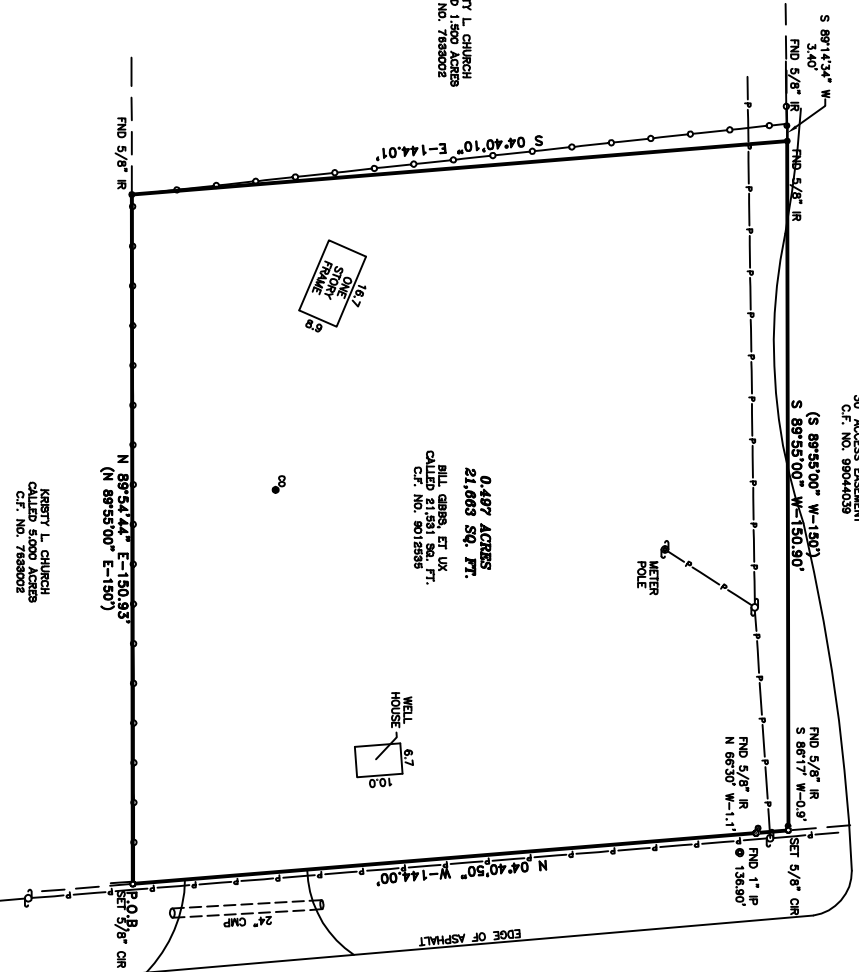
30' ACCESS EASEMENT
C.F. NO. 98044039

LEGEND:

- 1. ELECTRIC BOX
- 2. CABLE TELEVISION BOX
- 3. GAS METER
- 4. WATER METER
- 5. SANITARY SEWER MANHOLE
- 6. STORM SEWER MANHOLE
- 7. TELEPHONE MANHOLE
- 8. ELECTRIC MANHOLE
- 9. SAMPLE WELL
- 10. SPRING WELL
- 11. UNDERGROUND TELEPHONE MARKER
- 12. GAS MARKER
- 13. PIPELINE MARKER
- 14. FIRE HYDRANT
- 15. GAS VALVE
- 16. MONITORING WELL
- 17. UTILITY POLE
- 18. TRAFFIC SIGNAL POLE
- 19. TRAFFIC CONTROL BOX
- 20. BENCHMARK
- 21. FILM CODE
- 22. MONUMENTS SET NUMBER
- 23. MONUMENTS SET NUMBER
- 24. MONUMENTS SET NUMBER
- 25. MONUMENTS SET NUMBER
- 26. MONUMENTS SET NUMBER
- 27. MONUMENTS SET NUMBER
- 28. MONUMENTS SET NUMBER
- 29. MONUMENTS SET NUMBER
- 30. MONUMENTS SET NUMBER
- 31. MONUMENTS SET NUMBER
- 32. MONUMENTS SET NUMBER
- 33. MONUMENTS SET NUMBER
- 34. MONUMENTS SET NUMBER
- 35. MONUMENTS SET NUMBER
- 36. MONUMENTS SET NUMBER
- 37. MONUMENTS SET NUMBER
- 38. MONUMENTS SET NUMBER
- 39. MONUMENTS SET NUMBER
- 40. MONUMENTS SET NUMBER
- 41. MONUMENTS SET NUMBER
- 42. MONUMENTS SET NUMBER
- 43. MONUMENTS SET NUMBER
- 44. MONUMENTS SET NUMBER
- 45. MONUMENTS SET NUMBER
- 46. MONUMENTS SET NUMBER
- 47. MONUMENTS SET NUMBER
- 48. MONUMENTS SET NUMBER
- 49. MONUMENTS SET NUMBER
- 50. MONUMENTS SET NUMBER
- 51. MONUMENTS SET NUMBER
- 52. MONUMENTS SET NUMBER
- 53. MONUMENTS SET NUMBER
- 54. MONUMENTS SET NUMBER
- 55. MONUMENTS SET NUMBER
- 56. MONUMENTS SET NUMBER
- 57. MONUMENTS SET NUMBER
- 58. MONUMENTS SET NUMBER
- 59. MONUMENTS SET NUMBER
- 60. MONUMENTS SET NUMBER
- 61. MONUMENTS SET NUMBER
- 62. MONUMENTS SET NUMBER
- 63. MONUMENTS SET NUMBER
- 64. MONUMENTS SET NUMBER
- 65. MONUMENTS SET NUMBER
- 66. MONUMENTS SET NUMBER
- 67. MONUMENTS SET NUMBER
- 68. MONUMENTS SET NUMBER
- 69. MONUMENTS SET NUMBER
- 70. MONUMENTS SET NUMBER
- 71. MONUMENTS SET NUMBER
- 72. MONUMENTS SET NUMBER
- 73. MONUMENTS SET NUMBER
- 74. MONUMENTS SET NUMBER
- 75. MONUMENTS SET NUMBER
- 76. MONUMENTS SET NUMBER
- 77. MONUMENTS SET NUMBER
- 78. MONUMENTS SET NUMBER
- 79. MONUMENTS SET NUMBER
- 80. MONUMENTS SET NUMBER
- 81. MONUMENTS SET NUMBER
- 82. MONUMENTS SET NUMBER
- 83. MONUMENTS SET NUMBER
- 84. MONUMENTS SET NUMBER
- 85. MONUMENTS SET NUMBER
- 86. MONUMENTS SET NUMBER
- 87. MONUMENTS SET NUMBER
- 88. MONUMENTS SET NUMBER
- 89. MONUMENTS SET NUMBER
- 90. MONUMENTS SET NUMBER
- 91. MONUMENTS SET NUMBER
- 92. MONUMENTS SET NUMBER
- 93. MONUMENTS SET NUMBER
- 94. MONUMENTS SET NUMBER
- 95. MONUMENTS SET NUMBER
- 96. MONUMENTS SET NUMBER
- 97. MONUMENTS SET NUMBER
- 98. MONUMENTS SET NUMBER
- 99. MONUMENTS SET NUMBER
- 100. MONUMENTS SET NUMBER

KIRSTY L. CHURCH
CALLED 5.000 ACRES
C.F. NO. 7688002

0.487 ACRES
21,663 SQ. FT.
MILL GARR, ET UX
CALLED 21,663 SQ. FT.
C.F. NO. 8012555



HONEA EGYPT ROAD
(60' PUBLIC RIGHT-OF-WAY)

SURVEY NOTES:

1. ONLY VISIBLE EVIDENCE OF UTILITIES AND IMPROVEMENTS ARE SHOWN.
2. THE SURVEYOR DID NOT ABSTRACT THE SUBJECT PROPERTY. THIS SURVEY WAS PERFORMED WITHOUT THE BENEFIT OF TITLE AND IS SUBJECT TO ANY INTERESTS THAT MAY BE DISCLOSED BY A FULL AND ACCURATE TITLE SEARCH.
3. NOTWITHSTANDING THE SURVEY IS INTENDED TO EXPRESS AN OPINION REGARDING OWNERSHIP OR TITLE.
4. THE WORD CERTIFY IS UNDERSTOOD TO BE AN EXPRESSION OF PROFESSIONAL JUDGMENT BY THE SURVEYOR, WHICH IS BASED ON HIS BEST KNOWLEDGE, INFORMATION AND BELIEF.
5. PROPERTY LIES IN ZONE "X" AREAS DETERMINED TO BE INSIDE THE 100 YEAR FLOODPLAIN ACCORDING TO THE FLOOD INSURANCE RATE MAP NO. 48339C 03756, EFFECTIVE DATE 8-14-14. THIS FLOOD STATEMENT DOES NOT IMPLY THAT THE PROPERTY OR STRUCTURES THEREON WILL BE AFFECTED BY FLOODING OR FLOOD DAMAGE. THE FLOOD STATEMENT SHALL NOT CREATE LIABILITY ON THE PART OF THE SURVEYOR.
6. ONLY THOSE SURVEY'S WHICH BEAR AN ORIGINAL INK IMPRESSION SEAL WILL BE CONSIDERED A "VALID COPY" OF THIS SURVEY. SURVEYOR WILL NOT BE RESPONSIBLE FOR ANYTHING OTHER THAN A "VALID COPY" OF THIS SURVEY.

SURVEYORS CERTIFICATION

I, ROGER D. PICKERING, A REGISTERED PROFESSIONAL LAND SURVEYOR IN THE STATE OF TEXAS, HAVE MADE A PERSONAL AND VISUAL EXAMINATION OF THE GROUND, UNDER MY SUPERVISION OF THE PROPERTY DESCRIBED HEREON (AND/OR BY METES AND BOUNDS ON ATTACHED SHEET), IS CORRECT AND TRUE AND HAVE NO ENCUMBRANCES APPARENT ON THE GROUND, AND THAT ALL INFORMATION IS WHOLLY WITHIN THE PROPERTY LINES, EXCEPT AS SHOWN OR NOTED HEREON.

WITNESS MY HAND THIS 20TH DAY OF OCTOBER 2017

ROGER D. PICKERING
REGISTERED PROFESSIONAL LAND SURVEYOR
TEXAS REGISTRATION NO. 5879



CHRISTOPHER T. MORGAN

BOUNDARY AND IMPROVEMENT
SURVEY

3555 HONEA EGYPT ROAD
MONTGOMERY, TEXAS 77316

ALL THAT CERTAIN 0.487 ACRE (21,663 SQUARE FOOT) TRACT OR PARCEL OF LAND SITUATED IN THE ARCHIBALD HODGE SURVEY, A-18, MONTGOMERY COUNTY, TEXAS.
(SEE ATTACHED METES AND BOUNDS DESCRIPTION)

PICKERING & ASSOCIATES
PROFESSIONAL LAND SURVEYORS, LLC

Firm Registration No. 10165200
7702 Pin Oak Street
Montgomery, Texas 77316
Phone: (936) 447-4703
Mobile: (281) 804-0785
pickering@bommail.com

Copyright 2017