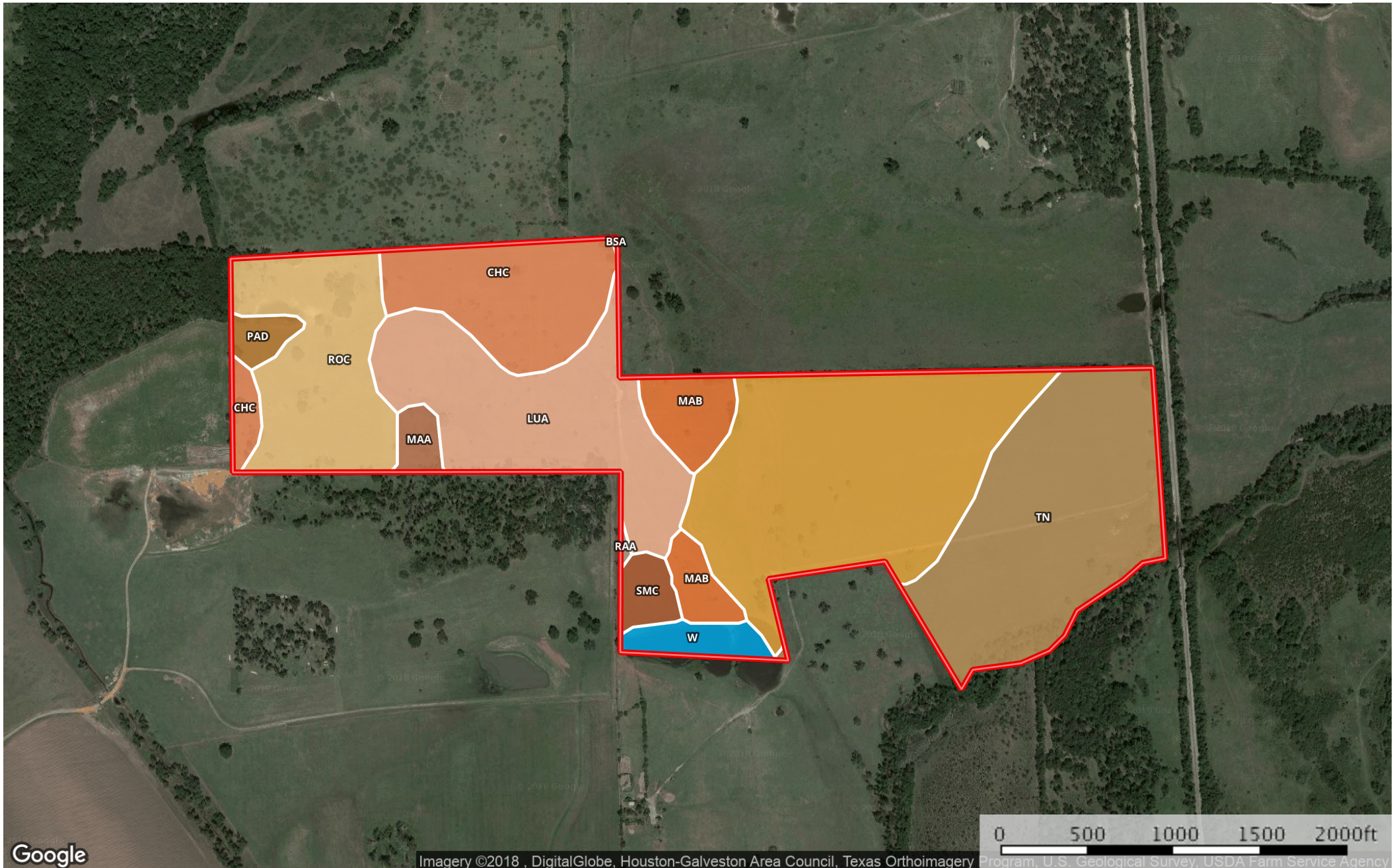



120.17 Acres
Grimes County, Texas, 120.17 AC +/-



 Boundary

Boundary 126.7 ac

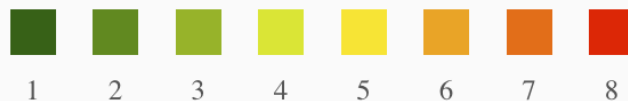
SOIL CODE	SOIL DESCRIPTION	ACRES	%	CAP
Tn	Tinn clay, frequently flooded	28.1	22.18	5w
MaB	Mabank fine sandy loam, 1 to 3 percent slopes	6.2	4.92	3e
W	Water	2.6	2.07	-
BsA	Burleson clay, 0 to 1 percent slopes	33.2	26.24	3w
SmC	Silstid loamy fine sand, 1 to 5 percent slopes	2.1	1.7	3e
RaA	Rader fine sandy loam, 0 to 1 percent slopes	0.2	0.15	2w
LuA	Lufkin fine sandy loam, 0 to 1 percent slopes	21.0	16.61	3w
ChC	Chazos loamy fine sand, 1 to 5 percent slopes	14.1	11.14	3e
RoC	Robco loamy fine sand, 1 to 5 percent slopes	15.8	12.5	3e
PaD	Padina loamy fine sand, 1 to 8 percent slopes	1.6	1.25	3e
MaA	Mabank fine sandy loam, 0 to 1 percent slopes	1.6	1.25	3w
TOTALS		126.7	100%	3.38

Capability Legend

Increased Limitations and Hazards

Decreased Adaptability and Freedom of Choice Users

Land, Capability Class(non-irrigated)



	1	2	3	4	5	6	7	8
'Wild Life'	•	•	•	•	•	•	•	•
Forestry	•	•	•	•	•	•	•	
Limited	•	•	•	•	•	•	•	
Moderate	•	•	•	•	•	•		
Intense	•	•	•	•	•			
Limited	•	•	•	•				
Moderate	•	•	•					
Intense	•	•						
Very Intense	•							

Grazing Cultivation

(c) climatic limitations (e) susceptibility to erosion

(s) soil limitations within the rooting zone (w) excess of water