

General Information

Amenities

Events

School News

Document Library

Gu

THE PARK

At Memorial Heights

P • O • A



TOWNHOMES - SKYLINE SERIES

INTERIOR FEATURES

9' Ceilings on 1st floor
 10' ceilings on 2nd floor
 9' ceilings on 3rd floor
 Hardwood floors on 2nd floor & entry foyer
 Crown molding on 2nd floor, master bedroom and entry foyer
 Direct vent fireplace on 2nd floor
 Built-in cabinets in living room
 Prewired for 6 speakers
 Two car attached garaged w/automatic opener
 Ceiling fans in living room and master bedroom

KITCHEN

1 ½ Edge granite countertops
 Cabinets with crown molding
 Under Counter lighting
 GE Appliances (stainless steel)
 Gas downdraft
 Built-in oven and microwave
 Dishwasher
 One touch faucet
 Tile Backsplash
 Undermount Kitchen Sink

MASTER BATH

Granite countertops
 His/Her vanities
 Separate shower
 6 ft. tub with Whirlpool system
 Crown molding
 Tile Floor

QUALITY CONSTRUCTION

Structural Foundation Slab on Piers
 Open web trusses with 1-1/8' decking on 2nd floor
 Oak treads on stairs to second floor
 Sold Sheathing behind exteriors
 25 year dimensional shingled roof
 Slab recessed for elevator
 CAT 5 wiring for phone and RG 6 for T.V.'s

ENERGY PACKAGE

Dual system high efficiency A/C with 12 SEER
 Programmable Thermostat
 R-6 flexible duct work
 Insulation:
 R-13 exterior wall batt insulation
 R-22 in vaulted ceilings
 R-30 blown in flat ceiling
 Double Paned vinyl windows
 Polycel foam around windows, doors and top plate

EXTERIOR FEATURES

Private alley access
 Private balconies with wrought iron rail or stucco wall
 Brick or Pavers front porch and walks
 Sprinkler System in front yard
 Front lawn maintained by Property Owners

Linen Cabinet over commode

Association (POA)

Security/Safety Package

Security system with two keypads

Smoke detectors

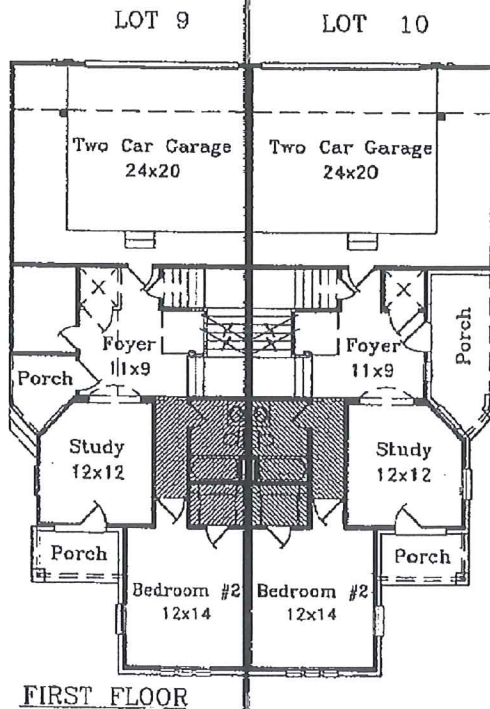
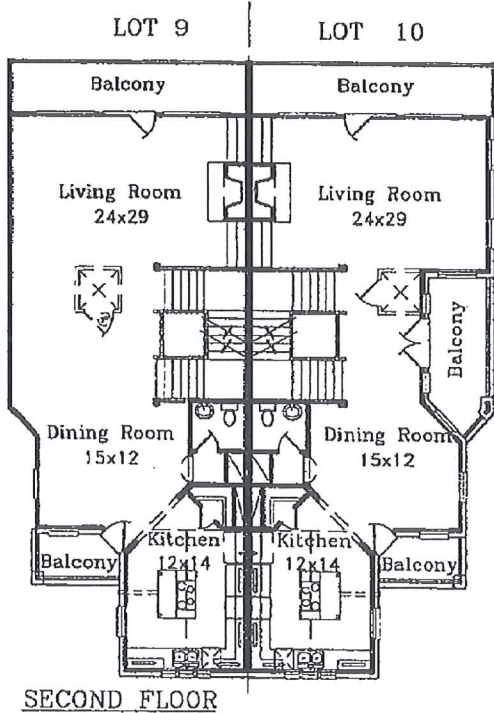
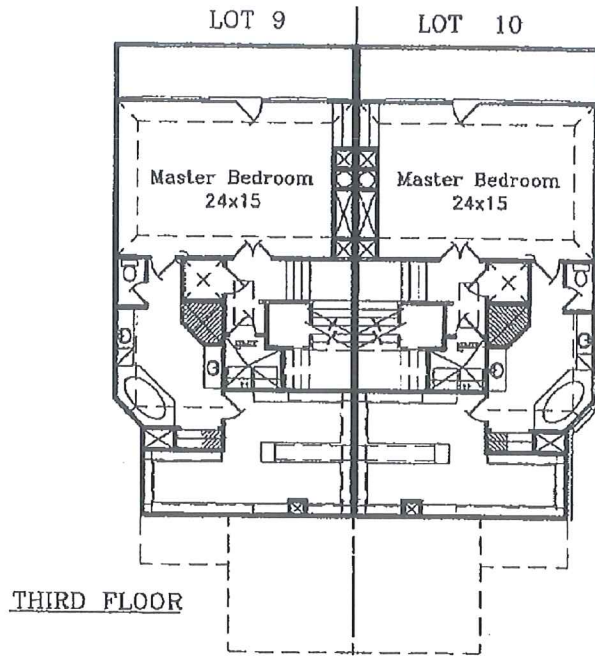
Photo-cell for rear access lighting

All weather GFCI electrical outlets on exterior, garage, kitchen and baths

[Intranet](#)

[Site Admin](#)

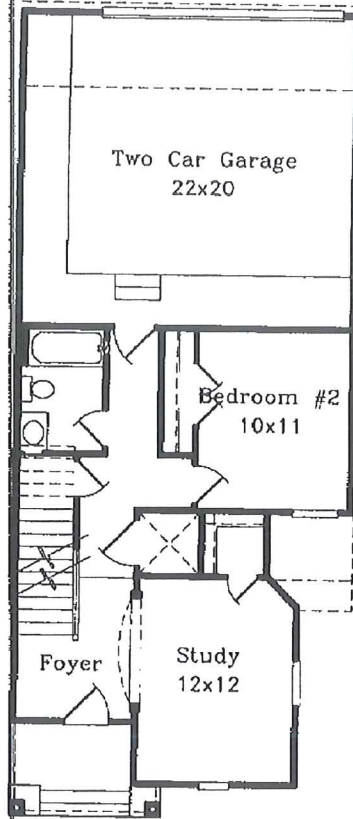
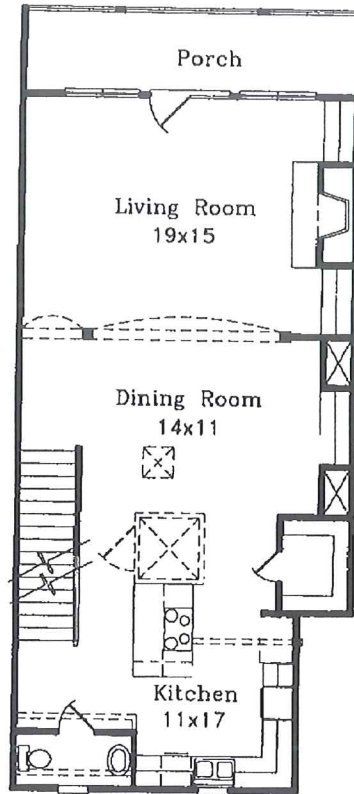
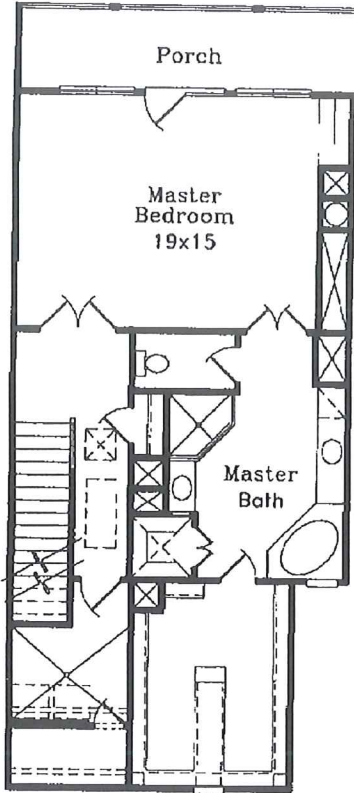




MADISON
CUSTOM HOMES

330 S. GATE STONE
NATCHEZ
2797 / 2688 Sq. Ft.
Approximately.

Square footage and room dimensions are approximate. Variances in square footage may occur in different elevations or when different exterior materials are used. Madison Custom Homes reserves the right to make changes and substitutions.



MADISON
CUSTOM HOMES

(middle units)
LEXINGTON
2454 Sq.Ft.
Approximately

Square footage and room dimensions are approximate. Variances in square footage may occur in different elevations or when different exterior materials are used. Madison Custom Homes reserves the right to make changes and substitutions.