

**FINAL PLAT  
OLD HOUSTON ACRES**  
SECTION THREE, THREE ACRES, OF  
A SUBDIVISION OF 78.975 ACRES OF  
LAND IN THE T. & N. O. R. CO.  
SURVEY, A-566  
MONTGOMERY COUNTY, TEXAS  
CONTAINING 28 LOTS 1 BLOCK

JANUARY, 2007  
SINGLE LOTS  
OWNER/DEVELOPER  
Elite Premier's Investment Company  
P.O. Box 10000, Houston, Texas 77255  
(281) 344-5141  
Fax: (281) 354-6627

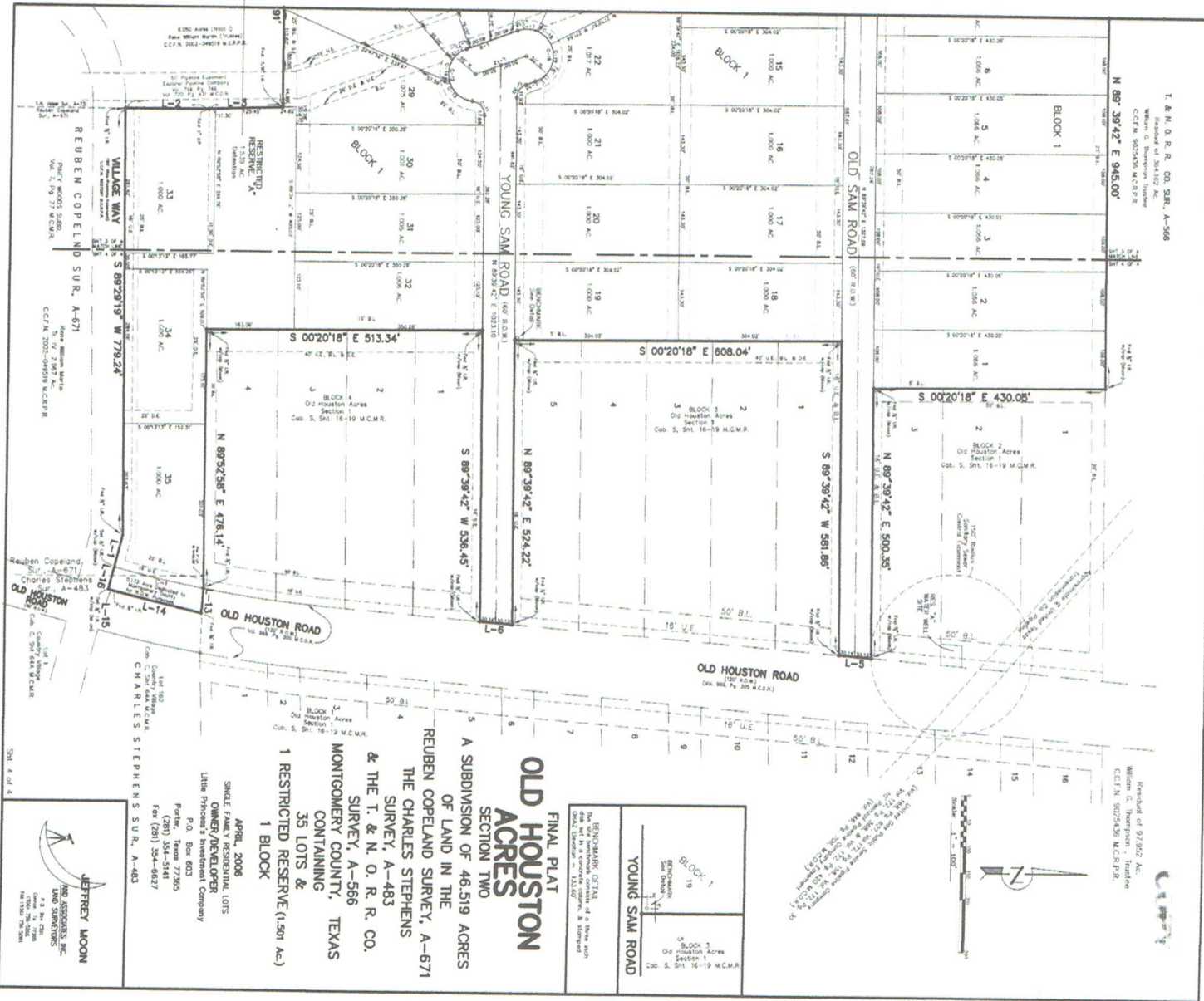


FILE # 2007-038240  
SHEET 701  
TAB 2









**OLD HOUSTON ACRES**  
**SECTION TWO**

A SUBDIVISION OF 46.519 ACRES OF LAND IN THE REUBEN COPPELAND SURVEY, A-671 THE CHARLES STEPHENS SURVEY, A-483 & THE T. & N. O. R. R. CO. SURVEY, A-566 MONTGOMERY COUNTY, TEXAS CONTAINING 35 LOTS & 1 RESTRICTED RESERVE (1.501 AC.) 1 BLOCK

APRIL, 2006  
 SINGLE FAMILY RESIDENTIAL LOTS  
 OWNER/DEVELOPER  
 Little Pinkney, a Company  
 P.O. Box 603  
 Poffert, Texas 77365  
 (281) 354-5141  
 Fax (281) 354-6627



BENCHMARK DETAIL This detail is a true and correct copy of the original survey data and is not to be used for any other purpose. P.L. 12/07	BLOCK 1 19 18 17 16 15 14 13 12 11 10 9 8 7 6 5 4 3 2 1 0 1-19 M.C.M.R.
---------------------------------------------------------------------------------------------------------------------------------------------------	----------------------------------------------------------------------------------------------------------------------------------------

T. & N. O. R. R. CO. SUR. A-566  
 Standard of 364.152' AC.  
 William C. Thompson - Inmate  
 C.C.F.N. 3025436 M.C.R.P.R.

Resubdiv of 97.907 AC.  
 William C. Thompson - Inmate  
 C.C.F.N. 3025436 M.C.R.P.R.

COPY

CURVE TABLE

CHORD	LENGTH	DELTA	CHORD	CHORD
C-1	222.74	70.23	439.07	171.88
C-2	251.00	80.00	492.24	191.88
C-3	275.00	90.00	537.00	208.00
C-4	295.00	100.00	574.00	221.00
C-5	311.00	110.00	603.00	231.00
C-6	324.00	120.00	624.00	238.00
C-7	334.00	130.00	637.00	243.00
C-8	342.00	140.00	642.00	246.00
C-9	348.00	150.00	648.00	248.00
C-10	352.00	160.00	654.00	249.00
C-11	355.00	170.00	659.00	250.00
C-12	357.00	180.00	663.00	250.00
C-13	358.00	190.00	666.00	250.00
C-14	358.00	200.00	668.00	250.00
C-15	357.00	210.00	669.00	250.00
C-16	355.00	220.00	669.00	250.00
C-17	352.00	230.00	668.00	250.00
C-18	348.00	240.00	666.00	250.00
C-19	343.00	250.00	663.00	250.00
C-20	337.00	260.00	659.00	250.00

**FINAL PLAT**  
**OLD HOUSTON**  
**ACRES**

A SUBDIVISION OF 46.519 ACRES  
OF LAND IN THE  
REUBEN COPELAND  
SURVEY, A-671  
THE CHARLES STEPHENS  
SURVEY, A-483  
& THE T. & N. O. R. R. CO.  
SURVEY, A-566  
MONTGOMERY COUNTY, TEXAS  
CONTAINING 1 BLOCK,  
35 LOTS &  
1 RESTRICTED RESERVE (1.501 Acre)

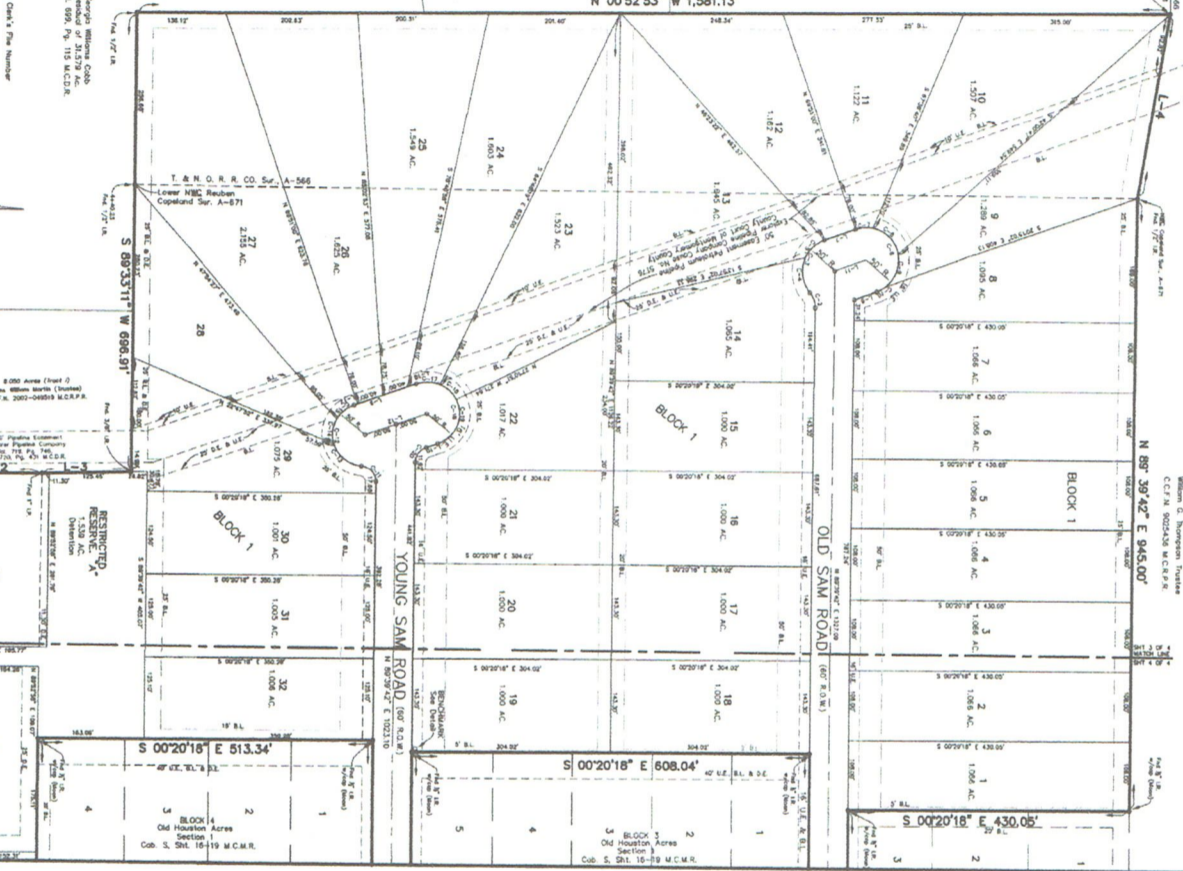
APRIL, 2006  
SINGLE FAMILY RESIDENTIAL LOTS  
OWNER/DEVELOPER  
Little Phoenix Investment Company  
P.O. Box 6033  
Porter, Texas 77365  
(281) 251-5141  
Fax: (281) 251-6827

THE LINE TABLE

LINE NO.	DESCRIPTION	LENGTH	BEARING
1	SECTION CORNER	1.501	N 00°20'18" E
2	SECTION CORNER	1.501	S 00°20'18" E
3	SECTION CORNER	1.501	S 00°20'18" W
4	SECTION CORNER	1.501	N 00°20'18" W
5	SECTION CORNER	1.501	N 00°20'18" E
6	SECTION CORNER	1.501	S 00°20'18" E
7	SECTION CORNER	1.501	S 00°20'18" W
8	SECTION CORNER	1.501	N 00°20'18" W
9	SECTION CORNER	1.501	N 00°20'18" E
10	SECTION CORNER	1.501	S 00°20'18" E
11	SECTION CORNER	1.501	S 00°20'18" W
12	SECTION CORNER	1.501	N 00°20'18" W
13	SECTION CORNER	1.501	N 00°20'18" E
14	SECTION CORNER	1.501	S 00°20'18" E
15	SECTION CORNER	1.501	S 00°20'18" W
16	SECTION CORNER	1.501	N 00°20'18" W
17	SECTION CORNER	1.501	N 00°20'18" E
18	SECTION CORNER	1.501	S 00°20'18" E
19	SECTION CORNER	1.501	S 00°20'18" W
20	SECTION CORNER	1.501	N 00°20'18" W
21	SECTION CORNER	1.501	N 00°20'18" E
22	SECTION CORNER	1.501	S 00°20'18" E
23	SECTION CORNER	1.501	S 00°20'18" W
24	SECTION CORNER	1.501	N 00°20'18" W
25	SECTION CORNER	1.501	N 00°20'18" E
26	SECTION CORNER	1.501	S 00°20'18" E
27	SECTION CORNER	1.501	S 00°20'18" W
28	SECTION CORNER	1.501	N 00°20'18" W
29	SECTION CORNER	1.501	N 00°20'18" E
30	SECTION CORNER	1.501	S 00°20'18" E
31	SECTION CORNER	1.501	S 00°20'18" W
32	SECTION CORNER	1.501	N 00°20'18" W
33	SECTION CORNER	1.501	N 00°20'18" E
34	SECTION CORNER	1.501	S 00°20'18" E
35	SECTION CORNER	1.501	S 00°20'18" W
36	SECTION CORNER	1.501	N 00°20'18" W
37	SECTION CORNER	1.501	N 00°20'18" E
38	SECTION CORNER	1.501	S 00°20'18" E
39	SECTION CORNER	1.501	S 00°20'18" W
40	SECTION CORNER	1.501	N 00°20'18" W
41	SECTION CORNER	1.501	N 00°20'18" E
42	SECTION CORNER	1.501	S 00°20'18" E
43	SECTION CORNER	1.501	S 00°20'18" W
44	SECTION CORNER	1.501	N 00°20'18" W
45	SECTION CORNER	1.501	N 00°20'18" E
46	SECTION CORNER	1.501	S 00°20'18" E
47	SECTION CORNER	1.501	S 00°20'18" W
48	SECTION CORNER	1.501	N 00°20'18" W
49	SECTION CORNER	1.501	N 00°20'18" E
50	SECTION CORNER	1.501	S 00°20'18" E
51	SECTION CORNER	1.501	S 00°20'18" W
52	SECTION CORNER	1.501	N 00°20'18" W
53	SECTION CORNER	1.501	N 00°20'18" E
54	SECTION CORNER	1.501	S 00°20'18" E
55	SECTION CORNER	1.501	S 00°20'18" W
56	SECTION CORNER	1.501	N 00°20'18" W
57	SECTION CORNER	1.501	N 00°20'18" E
58	SECTION CORNER	1.501	S 00°20'18" E
59	SECTION CORNER	1.501	S 00°20'18" W
60	SECTION CORNER	1.501	N 00°20'18" W
61	SECTION CORNER	1.501	N 00°20'18" E
62	SECTION CORNER	1.501	S 00°20'18" E
63	SECTION CORNER	1.501	S 00°20'18" W
64	SECTION CORNER	1.501	N 00°20'18" W
65	SECTION CORNER	1.501	N 00°20'18" E
66	SECTION CORNER	1.501	S 00°20'18" E
67	SECTION CORNER	1.501	S 00°20'18" W
68	SECTION CORNER	1.501	N 00°20'18" W
69	SECTION CORNER	1.501	N 00°20'18" E
70	SECTION CORNER	1.501	S 00°20'18" E
71	SECTION CORNER	1.501	S 00°20'18" W
72	SECTION CORNER	1.501	N 00°20'18" W
73	SECTION CORNER	1.501	N 00°20'18" E
74	SECTION CORNER	1.501	S 00°20'18" E
75	SECTION CORNER	1.501	S 00°20'18" W
76	SECTION CORNER	1.501	N 00°20'18" W
77	SECTION CORNER	1.501	N 00°20'18" E
78	SECTION CORNER	1.501	S 00°20'18" E
79	SECTION CORNER	1.501	S 00°20'18" W
80	SECTION CORNER	1.501	N 00°20'18" W
81	SECTION CORNER	1.501	N 00°20'18" E
82	SECTION CORNER	1.501	S 00°20'18" E
83	SECTION CORNER	1.501	S 00°20'18" W
84	SECTION CORNER	1.501	N 00°20'18" W
85	SECTION CORNER	1.501	N 00°20'18" E
86	SECTION CORNER	1.501	S 00°20'18" E
87	SECTION CORNER	1.501	S 00°20'18" W
88	SECTION CORNER	1.501	N 00°20'18" W
89	SECTION CORNER	1.501	N 00°20'18" E
90	SECTION CORNER	1.501	S 00°20'18" E
91	SECTION CORNER	1.501	S 00°20'18" W
92	SECTION CORNER	1.501	N 00°20'18" W
93	SECTION CORNER	1.501	N 00°20'18" E
94	SECTION CORNER	1.501	S 00°20'18" E
95	SECTION CORNER	1.501	S 00°20'18" W
96	SECTION CORNER	1.501	N 00°20'18" W
97	SECTION CORNER	1.501	N 00°20'18" E
98	SECTION CORNER	1.501	S 00°20'18" E
99	SECTION CORNER	1.501	S 00°20'18" W
100	SECTION CORNER	1.501	N 00°20'18" W

F. H. YEISER SUR., A-731

15.789 Ac.  
Meredith Joyce Murphy  
C.P.M. 8000333 M.C.P.R.



LEGEND  
C.C.R. = County Clerk's Plat Number  
F.S. = Faded  
L.P. = Lost Plat  
M.C.P.R. = Montgomery County Plat Record  
M.C.P.R. = Montgomery County Plat Record  
M.C.P.R. = Montgomery County Plat Record  
U.E. = Undeveloped Utility Easement  
R.L. = Indefinite Driveway Easement

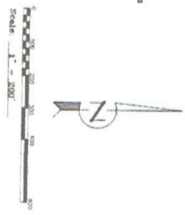
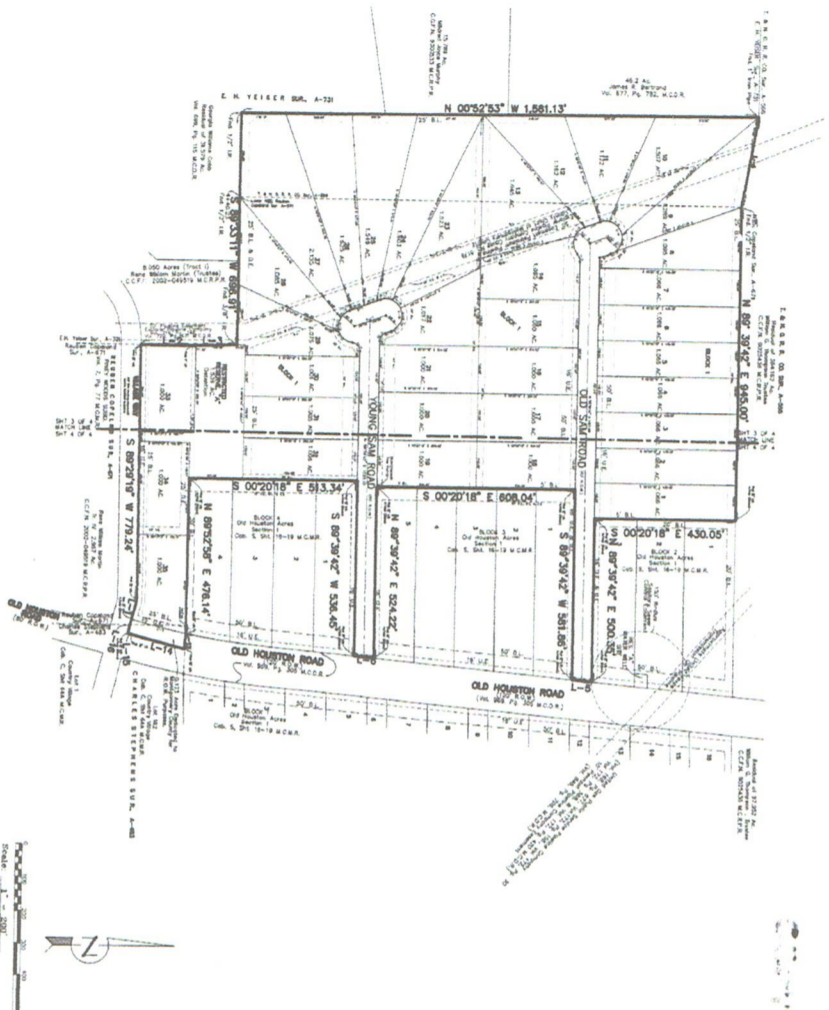


File No: 2006-050368

CABINET 2

Sheet 315

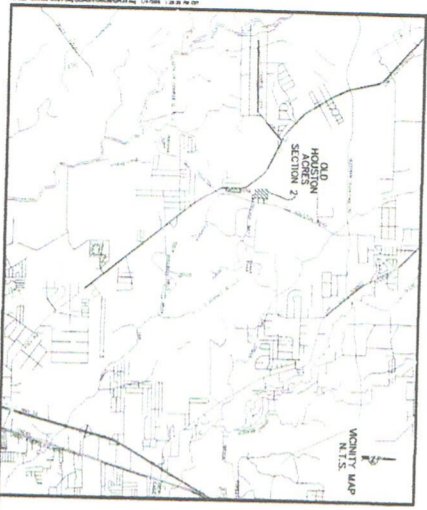
SH. 3 of 4



**FINAL PLAT  
OLD HOUSTON ACRES**

SECTION TWO  
 A SUBDIVISION OF 46.519 ACRES  
 OF LAND IN THE REUBEN COPELAND SURVEY, A-671  
 THE CHARLES STEPHENS SURVEY, A-483  
 & THE T. & N. O. R. CO. SURVEY, A-566  
 MONTGOMERY COUNTY, TEXAS  
 CONTAINING  
 35 LOTS &  
 1 RESTRICTED RESERVE (1.539 Ac.)  
 1 BLOCK

APRIL, 2006  
 SINGLE FAMILY RESIDENTIAL LOTS  
 OWNER/DEVELOPER  
 Little Pricers's Investment Company  
 P.O. Box 603  
 Parker, Texas 77365  
 (281) 354-5141  
 Fax (281) 354-6627



Sht. 2 of 4

