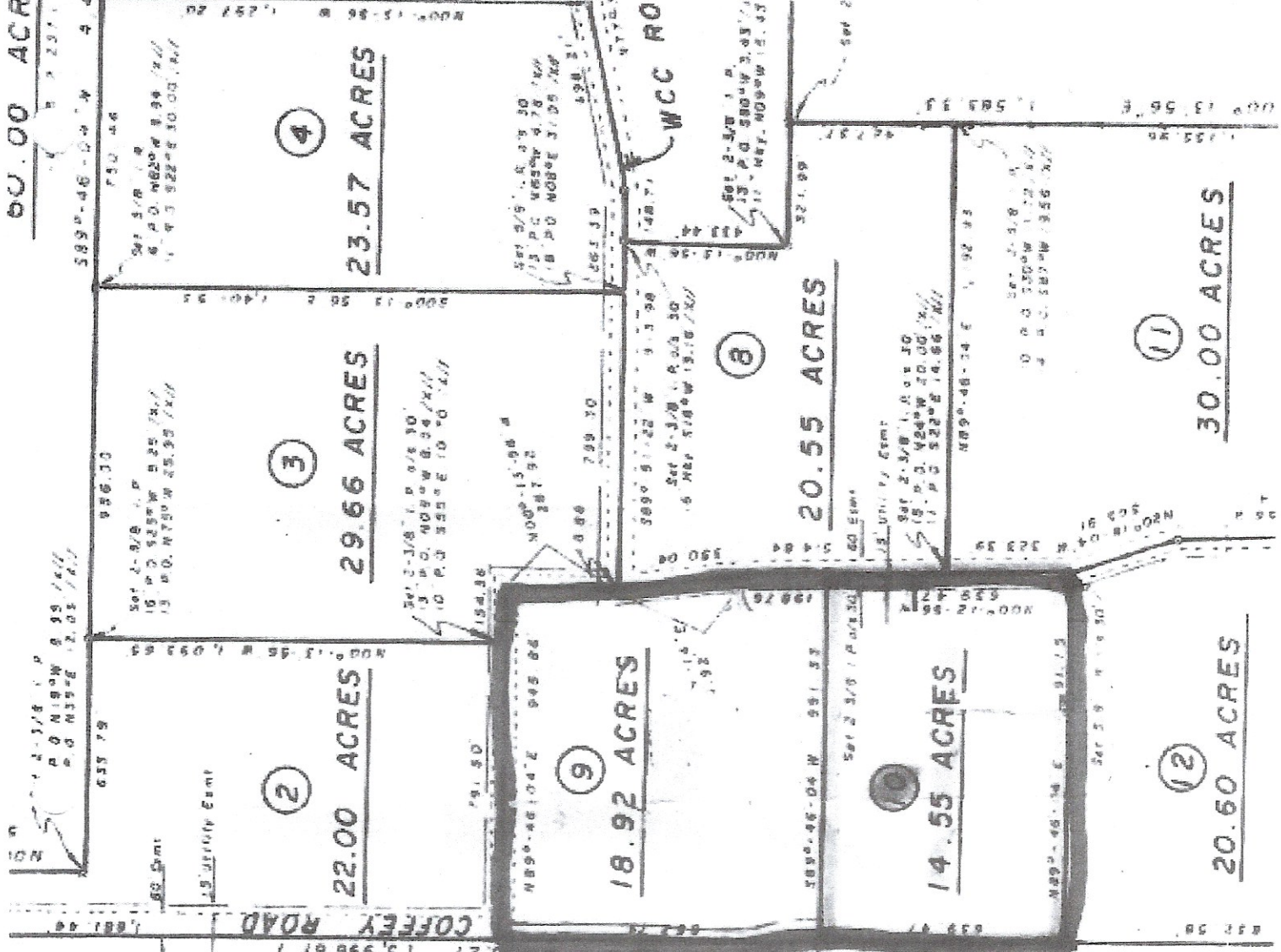


60.00 ACRES



10' x 6' below surface
 line in center of access strip.

John B. Wrenford Trust
 284.45 acres
 p 162 p 73

Set 2-3/8" I.P.
 19 E 1/4 S20°W 12.79' 147'
 12 P.O. S21°E 24.00' 147'

Set 5/8" I.P.

Set 5/8" I.P.

(12)

20.60 ACRES

(9)

18.92 ACRES

(2)

22.00 ACRES

(3)

29.66 ACRES

(8)

20.55 ACRES

(11)

30.00 ACRES

(4)

23.57 ACRES

WCC RD

COFFEY ROAD

TRACT 9 - 18.92 ACRES

These notes describe that certain 18.92 acres in the AUGUSTUS HOTCHKISS SURVEY, Abstract 17, in Madison County, Texas; being part of TRACT 1 - 335.49 acres contained in a Warranty Deed dated June 24, 1994, from Clara W. Cargile to W. R. Coffey and recorded in Volume 415 Page 168 Madison County Official Records; this 18.92 acre tract is described more particularly as follows:

BEGINNING at the Southwest corner of TRACT 2 - 22.00 acres (surveyed out of TRACT 1 - 335.49 acres this date) in the West line of TRACT 1 - 335.49 acres, same line being a line of that "284.45 acres" recorded in Volume 162 Page 73 MCDR; set a 2-3/8" iron pipe at same from which I marked a 15" Elm /X// bearing South 07° West 17.79 feet and a 12" Post Oak /X// bearing South 21° East 24.00 feet; found a 2-3/8" iron pipe bearing North 00°-13'-56" West 1,681.44 feet, same being the Northwest corner of TRACT 1 - 335.49 acres from which a 23" Post Oak bears North 50° East 10.56 feet and I marked a 10" Post Oak /X// bearing South 45° East 23.62 feet and a 10" Post Oak /X//bearing South 17° East 3.79 feet;

THENCE with the South line of TRACT 2 - 22.00 acres and a line of TRACT 3 - 29.66 acres, same being the center of a 60 foot wide access strip of 16.43 acres (surveyed in TRACT 1 - 335.49 acres this date), North 89°-46'-04" East a distance of 945.86 feet to an interior corner of TRACT 3 - 29.66 acres; set a 5/8" iron rod at same 6" below surface;

THENCE with a line of TRACT 3 - 29.66 acres and with the West line of TRACT 8 - 20.55 acres (surveyed out of TRACT 1 - 335.49 acres this date), same being the center of said 60 foot wide access strip of 16.43 acres, as follows;

South 00°-13'-56" East 287.92 feet to a 5/8" iron rod set 6" below surface;

South 07°-19'-14" East 368.92 feet to a 5/8" iron rod set 6" below surface;

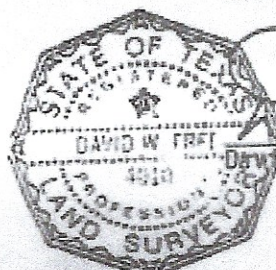
South 00°-12'-56" East 198.76 feet to the Northwest corner of TRACT 10 - 14.55 acres (surveyed out of TRACT 1 - 335.49 acres this date); set a 5/8" iron rod at same 6" below surface; set a 2-3/8" iron pipe (offset in the right-of-way of the 60 foot wide access strip of 16.43 acres) South 89°-46'-04" West 30.00 feet;

THENCE with the North line of TRACT 10 - 14.55 acres, South 89°-46'-04" West a distance of 991.33 feet to the Northwest corner of TRACT 10 - 14.55 acres in the West line of TRACT 1 - 335.49 acres; set a 5/8" iron rod at same; found a 1-1/2" iron pipe South 00°-13'-56" East 1,472.05 feet, same being the Southwest corner of TRACT 1 - 335.49 acres;

THENCE with the West line of TRACT 1 - 335.49 acres, North 00°-13'-56" West a distance of 852.79 feet to the PLACE OF BEGINNING.

Containing, according to the dimensions herein stated, an area of 18.92 acres of land.

SURVEYOR'S NOTE: Bearings based on TRACT 1 - 335.49 acres. Access is by the 60 foot wide access strip of 16.43 acres.



David W. Free
David W. Free

R.P.L.S. No. 4010

TRACT 10 - 14.55 ACRES

These notes describe that certain 14.55 acres in the AUGUSTUS HOTCHKISS SURVEY, Abstract 17, in Madison County, Texas; being part of TRACT 1 - 335.49 acres contained in a Warranty Deed dated June 24, 1994, from Clara W. Cargile to W. R. Coffey and recorded in Volume 415 Page 168 Madison County Official Records; this 14.55 acre tract is described more particularly as follows:

BEGINNING at the Southwest corner of TRACT 9 - 18.92 acres (surveyed out of TRACT 1 - 335.49 acres this date), in the West line of TRACT 1 - 335.49 acres, same line being a line of that "284.45 acres" recorded in Volume 162 Page 73 MCDR; set a 5/8" iron rod at same; found a 2-3/8" iron pipe bearing North 00°-13'-56" West 2,534.23 feet, same being the Northwest corner of TRACT 1 - 335.49 acres from which a 23" Post Oak bears North 50° East 10.56 feet and I marked a 10" Post Oak /X// bearing South 45° East 23.62 feet and another 10" Post Oak /X// bearing South 17° East 3.79 feet;

THENCE with the West line of TRACT 1 - 335.49 acres, same being a line of the "284.45 acres", South 00°-13'-56" East a distance of 639.47 feet to the Northwest corner of TRACT 12 - 20.60 acres (surveyed out of TRACT 1 - 335.49 acres this date); set a 5/8" iron rod at same; found a 1-1/2" iron pipe bearing South 00°-13'-56" East 832.58 feet, same being the Southwest corner of TRACT 1 - 335.49 acres (in a rock mound);

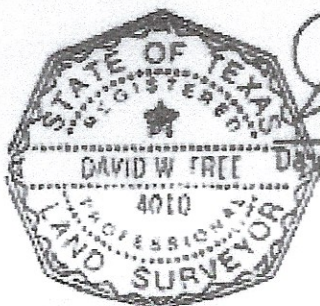
THENCE with the North line of TRACT 12 - 20.60 acres, North 89°-46'-04" East a distance of 991.15 feet to the Northeast corner of TRACT 12 - 20.60 acres in the West line of TRACT 11 - 30.00 acres, same being the center of a 60 foot wide access strip of 16.43 acres (surveyed out of TRACT 1 335.49 acres this date); set a 5/8" iron rod at same 6" below surface; set a 5/8" iron rod (offset in the right-of-way of said 60 foot wide access strip of 16.43 acres) South 89°-46'-04" West 30.00 feet;

THENCE with the West line of TRACT 11 - 30.00 acres and the West line of TRACT 8 - 20.55 acres (surveyed out of TRACT 1 - 335.49 acres this date), same being the center of said 60 foot wide access strip of 16.43 acres, North 00°-12'-56" West a distance of 639.47 feet to the Southeast corner of TRACT 9 - 18.92 acres; set a 5/8" iron rod at same; set a 2-3/8" iron pipe (offset in the right-of-way of the 60 foot wide access strip of 16.43 acres) South 89°-46'-04" West 30.00 feet;

THENCE with the South line of TRACT 9 - 18.92 acres, South 89°-46'-04" West a distance of 991.33 feet to the PLACE OF BEGINNING.

Containing, according to the dimensions herein stated, an area of 14.55 acres of land.

SURVEYOR'S NOTE: Bearing based on TRACT 1 - 335.49 acres. Access is by the 60 foot wide access strip of 16.43 acres.



David W. Free

R.P.L.S. No. 4010

AUGUSTUS

HOTCHKISS

A-17

CR.214

296

Oil Well
297

①

T-1
60 AC.

COFFEY SUB

②

③

④

⑤

ASO FMO

284.45 AC.

⑨

T-23

⑩

LARGO LN

⑦

Westmoreland

⑧

T-8

⑪

⑫

8

100 AC.

19

300

