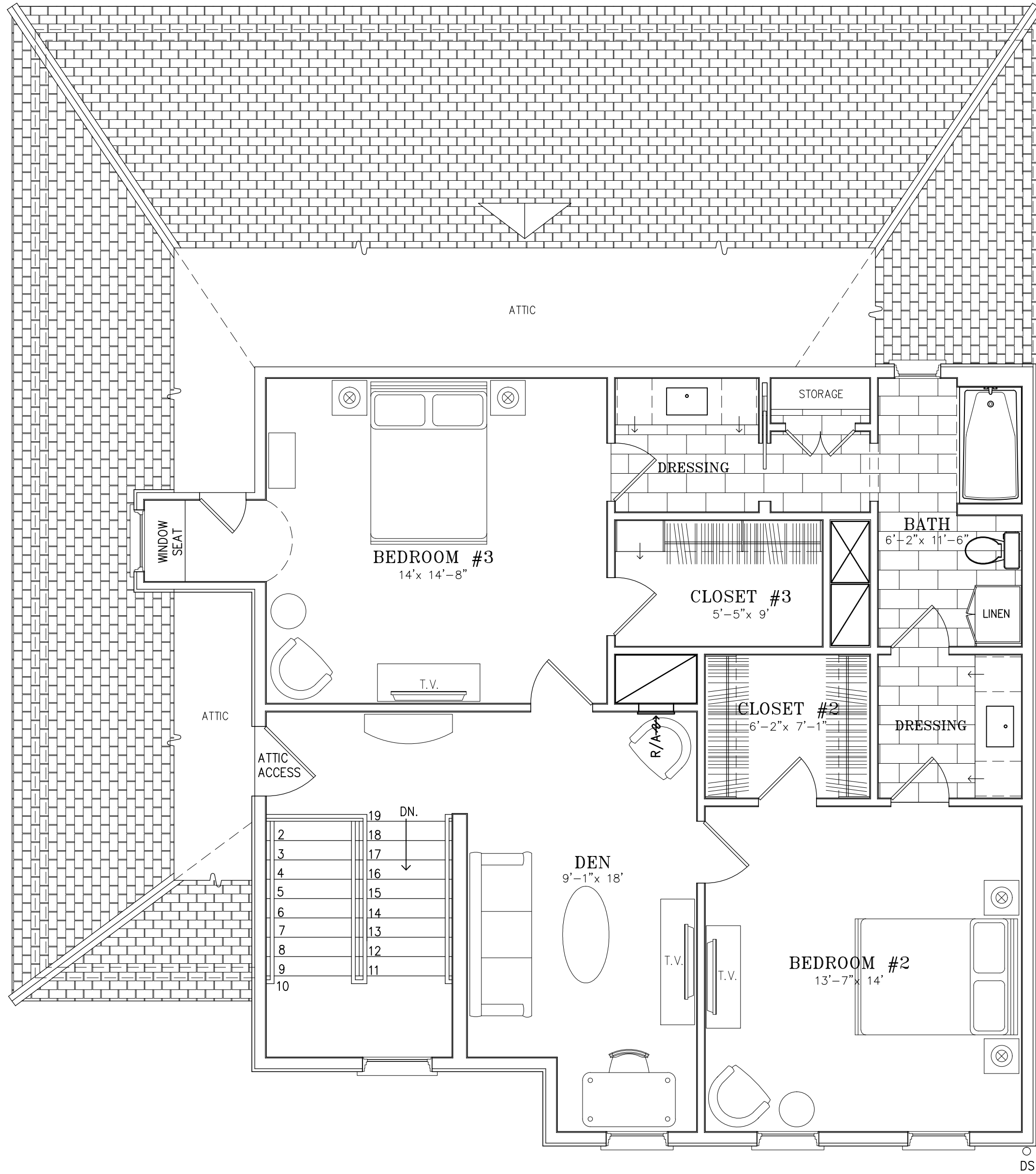
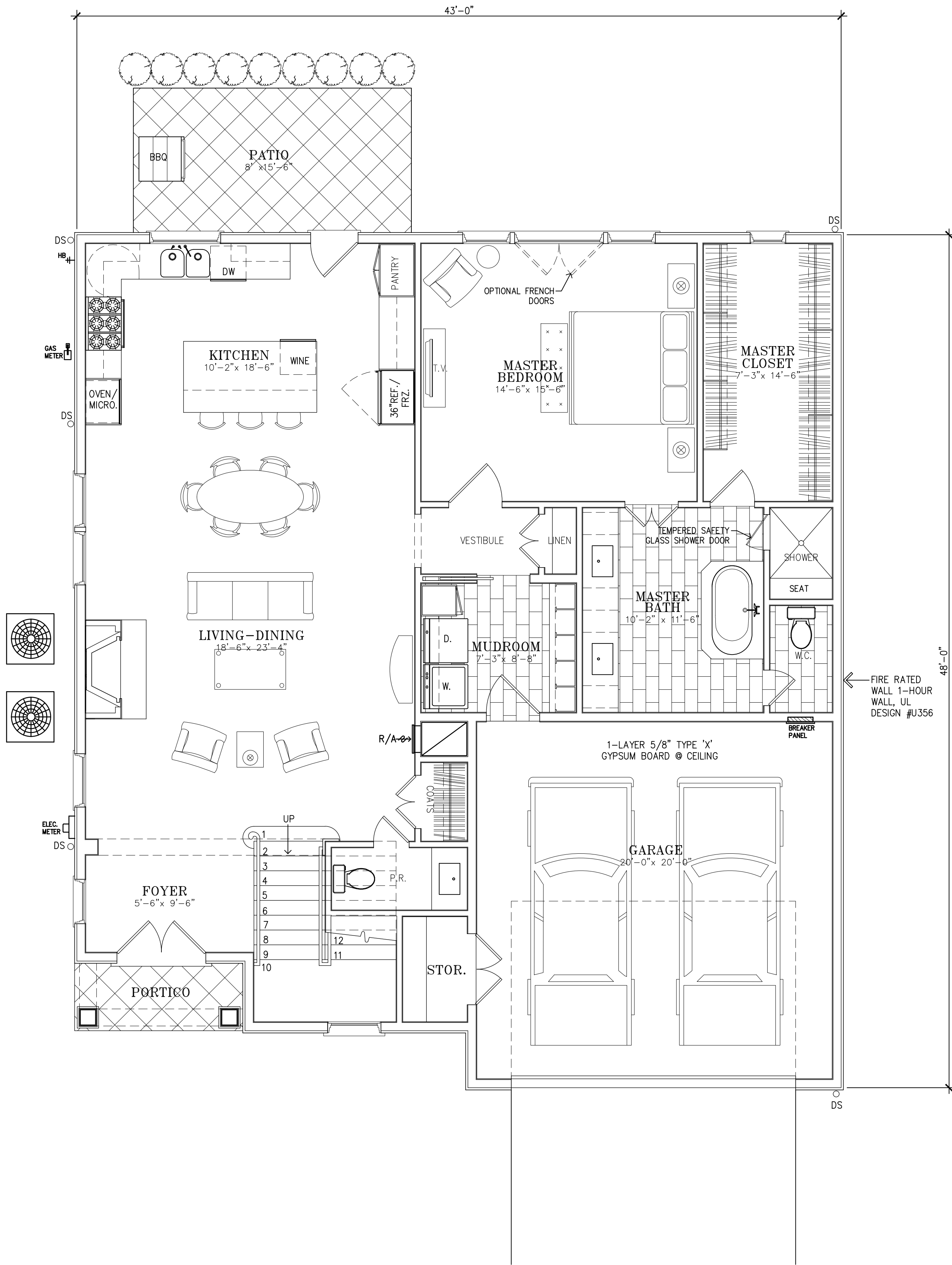


F:\Shenandoah's Vision Commons Development_1272\Drawings\Current\UNIT PLANS_UNIT G\UNIT G-1\12925_G-1_PLAN.dwg, 6/23/2017 10:14:17 AM



2 SECOND FLOOR PLAN
1/4"=1'-0"

AREA: 1,103 S.F.



1 FIRST FLOOR PLAN
1/4"=1'-0"

AREA: 1,504 S.F.

ROOM
ELEVATION
KEY

REVISED:

A-00

DRAWING: ##-XXX
DRAWN: RJS
PROJECT: ##XXX

SCALE: 1/4"=1'-0"
DATE: 06-20-17
FOLIO:

BOULEVARD GREEN
AT VISION PARK, TEXAS

ARCHITECTS
THE HOPKINS COMPANY
TEXAS REGISTRATION: BR1888

A-00