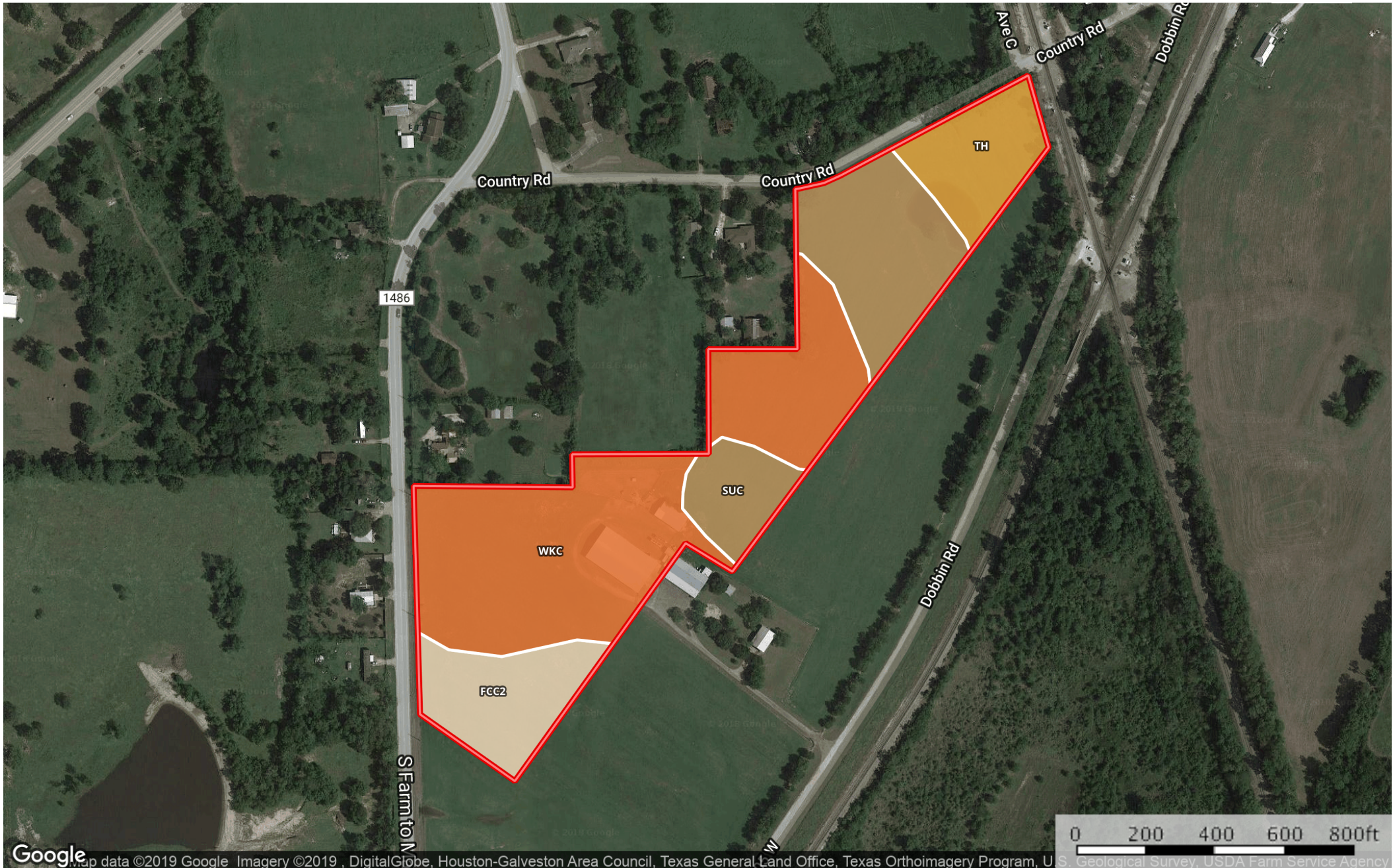




Clark 16.92 acres
Montgomery County, Texas, 16.92 AC +/-




Map data ©2019 Google Imagery ©2019, DigitalGlobe, Houston-Galveston Area Council, Texas General Land Office, Texas Orthoimagery Program, U.S. Geological Survey, USDA Farm Service Agency

 Boundary

Keith Robertson

 The information contained herein was obtained from sources deemed to be reliable. MapRight Services makes no warranties or guarantees as to the completeness or accuracy thereof.


|  Boundary 17.7 ac

SOIL CODE	SOIL DESCRIPTION	ACRES	%	CAP
SuC	Woodville fine sandy loam, 1 to 5 percent slopes	4.5	25.31	4e
WkC	Fetzer loamy fine sand, 1 to 5 percent slopes	9.0	50.82	3e
FcC2	Latium clay, 1 to 5 percent slopes, eroded	2.3	12.92	4e
Th	Gowker sandy clay loam, overwash	1.9	10.94	5w
TOTALS		17.7	100%	3.6

Capability Legend

Increased Limitations and Hazards

Decreased Adaptability and Freedom of Choice Users

Land, Capability Class(non-irrigated)								
	1	2	3	4	5	6	7	8
'Wild Life'	•	•	•	•	•	•	•	•
Forestry	•	•	•	•	•	•	•	
Limited	•	•	•	•	•	•	•	
Moderate	•	•	•	•	•	•		
Intense	•	•	•	•	•			
Limited	•	•	•	•				
Moderate	•	•	•					
Intense	•	•						
Very Intense	•							

Grazing Cultivation

(c) climatic limitations (e) susceptibility to erosion

(s) soil limitations within the rooting zone (w) excess of water