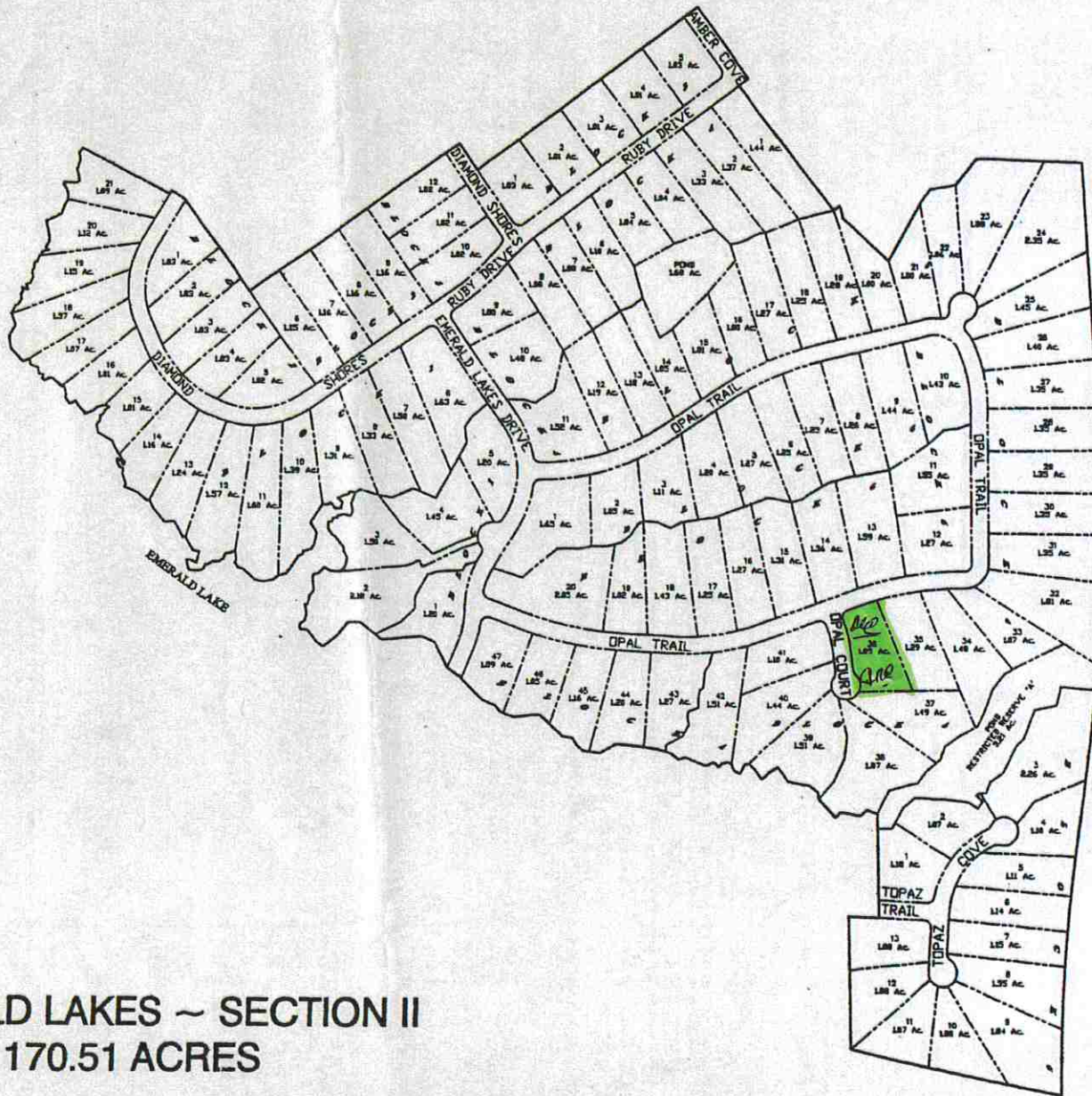
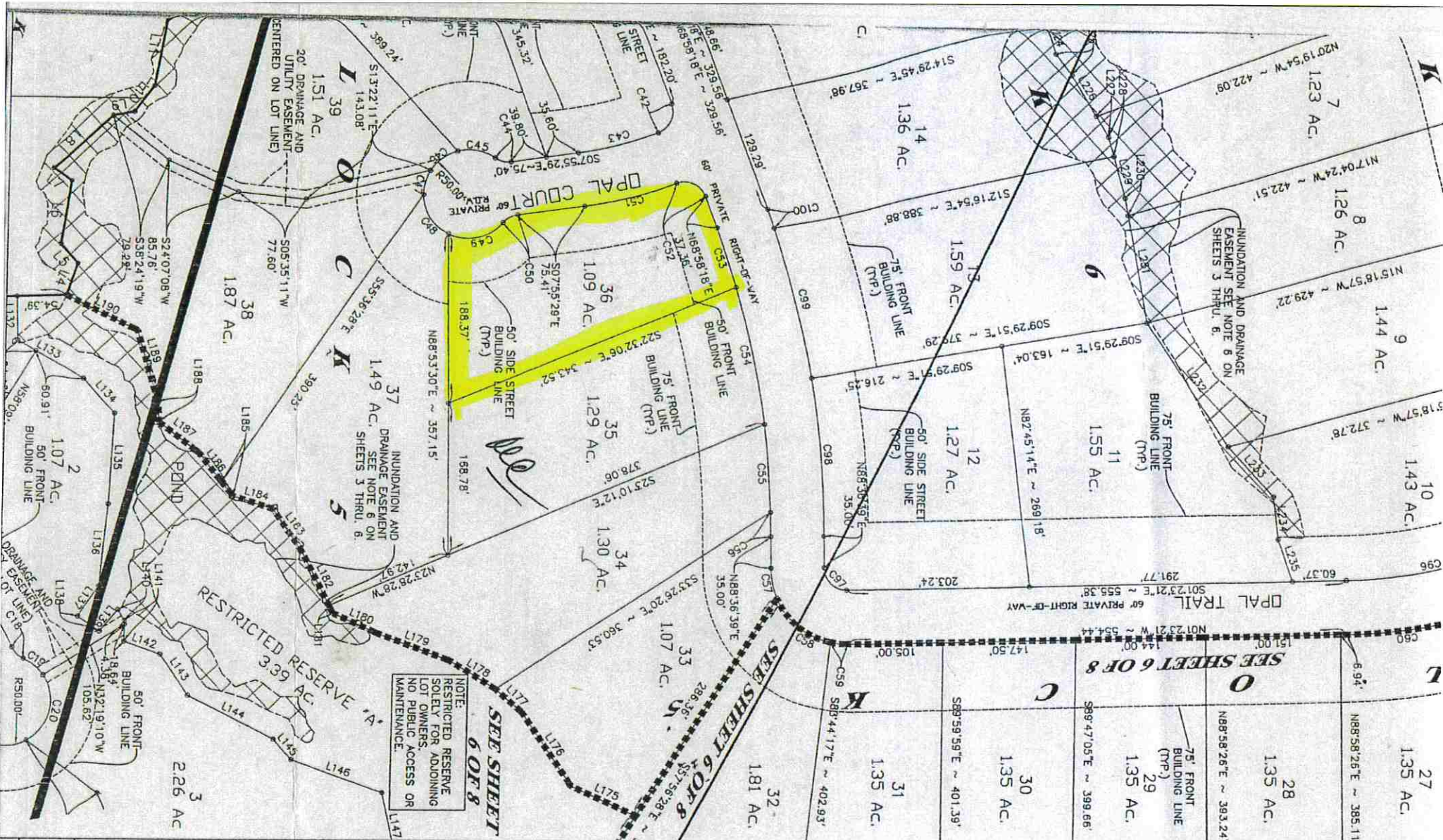


MARKETING PLAT



EMERALD LAKES ~ SECTION II
170.51 ACRES



NOTE:
RESTRICTED RESERVE
SOLELY FOR ADJOINING
LOT OWNERS.
NO PUBLIC ACCESS OR
MAINTENANCE.

FINAL PLAT
OF
EMERALD LAKES
SECTION II
171.32 ACRES

JOHN B. TONG SURVEY A-39
JAMES ELKINS SURVEY A-198
GEORGE LONIS SURVEY A-313
MONTGOMERY COUNTY, TEXAS

MUNICIPAL DEVELOPMENT GROUP
FILE NUMBER
001040-3915
SHEET 5 OF 8

OWNER:
LAKE FOREST DEVELOPMENT LLC
WILLIAM HINTERMISTER
14652 HIGHWAY 75 NORTH
WILLIS, TEXAS 77378
PHONE: (281) 546-9595

SCALE: 1"=100' FILENAME: 3915FP02D.dwg
PROJECT DATE: JUNE, 2007
DRAWN BY: D.J.H. BOOK:
CHECKED BY: G.K.T. PAGE:

MDG
MUNICIPAL
DEVELOPMENT
GROUP

2551 TEXAS AVENUE SOUTH, SUITE A
COLLEGE STATION, TX 77840

PH: (979) 693-5359 EMAIL: mdgcatx@yahoo.com
FX: (979) 693-4243

ENGINEERS, SURVEYORS, PLANNERS
CONSULTANTS, MANAGERS

THIS DRAWING IS AN INSTRUMENT OF PROFESSIONAL SERVICE AND IS
THE PROPERTY OF MUNICIPAL DEVELOPMENT GROUP AND MAY NOT BE
REPRODUCED OR USED IN WHOLE OR IN PART WITHOUT THE
EXPRESSED WRITTEN CONSENT OF MUNICIPAL DEVELOPMENT GROUP.
THIS DRAWING IS COPYRIGHTED AS OF PROJECT DATE.