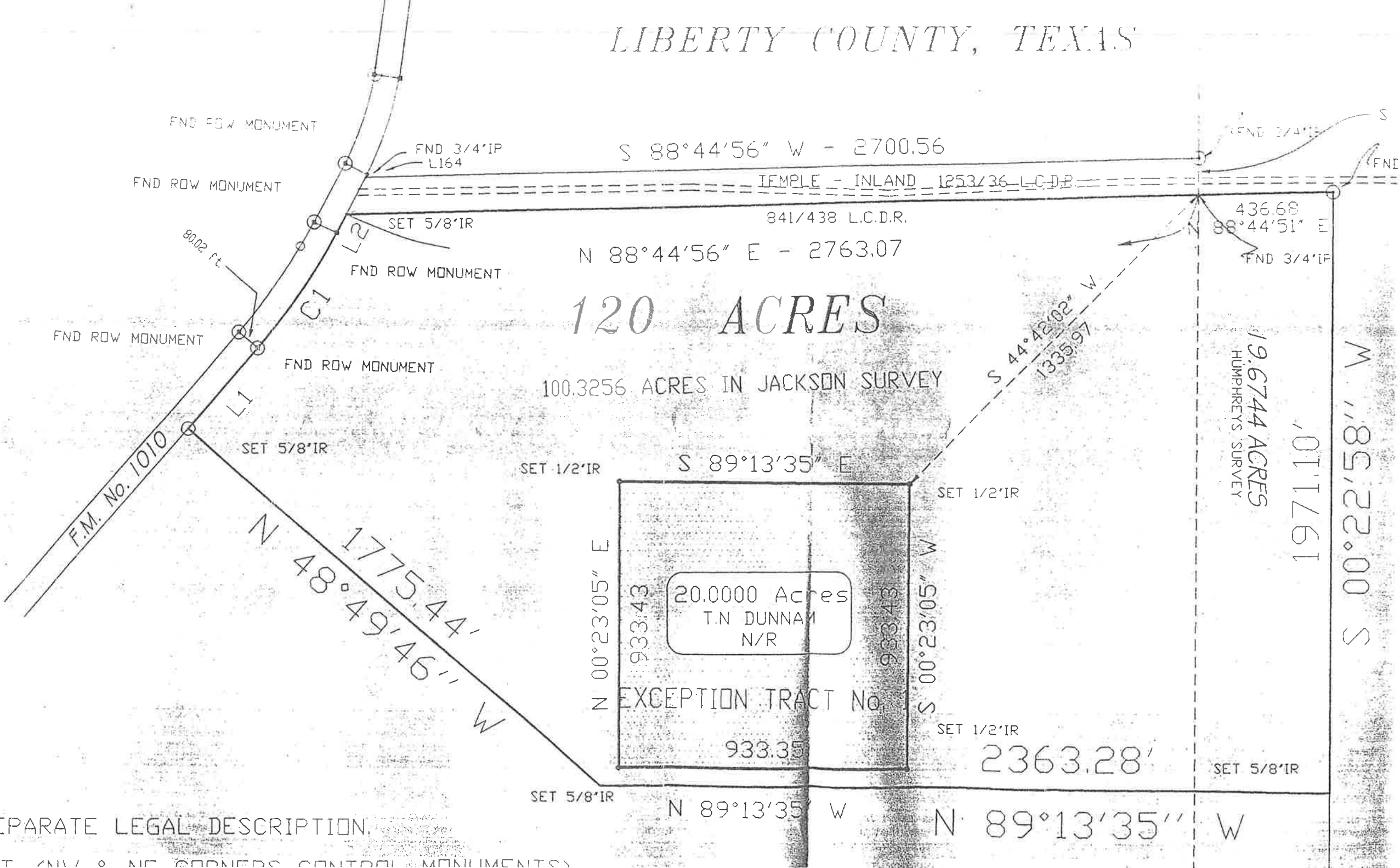


LIBERTY COUNTY, TEXAS



FND ROW MONUMENT

FND 3/4"IP  
L164

S 88°44'56" W - 2700.56

FND ROW MONUMENT

TEMPLE - INLAND 1253/36 L.C.D.R.

841/438 L.C.D.R.

436.68

SET 5/8"IR

N 88°44'56" E - 2763.07

88°44'51" E

FND ROW MONUMENT

120 ACRES

FND 3/4"IP

100.3256 ACRES IN JACKSON SURVEY

S 44°42'02" W  
1335.97

19.6744 ACRES  
HUMPHREYS SURVEY

M 1,85,22.00 S

FND ROW MONUMENT

FND ROW MONUMENT

SET 1/2"IR

S 89°13'35" E

SET 1/2"IR

F.M. No. 1010

SET 5/8"IR

N 00°23'05" E  
933.43

20.0000 Acres  
T.N. DUNNAM  
N/R

S 00°23'05" W  
933.43

EXCEPTION TRACT No.

933.35

SET 1/2"IR

2363.28'

SET 5/8"IR

SET 5/8"IR

N 89°13'35" W

N 89°13'35" W

SEPARATE LEGAL DESCRIPTION

FACT AND NO CORNERS CONTROL MONUMENTS