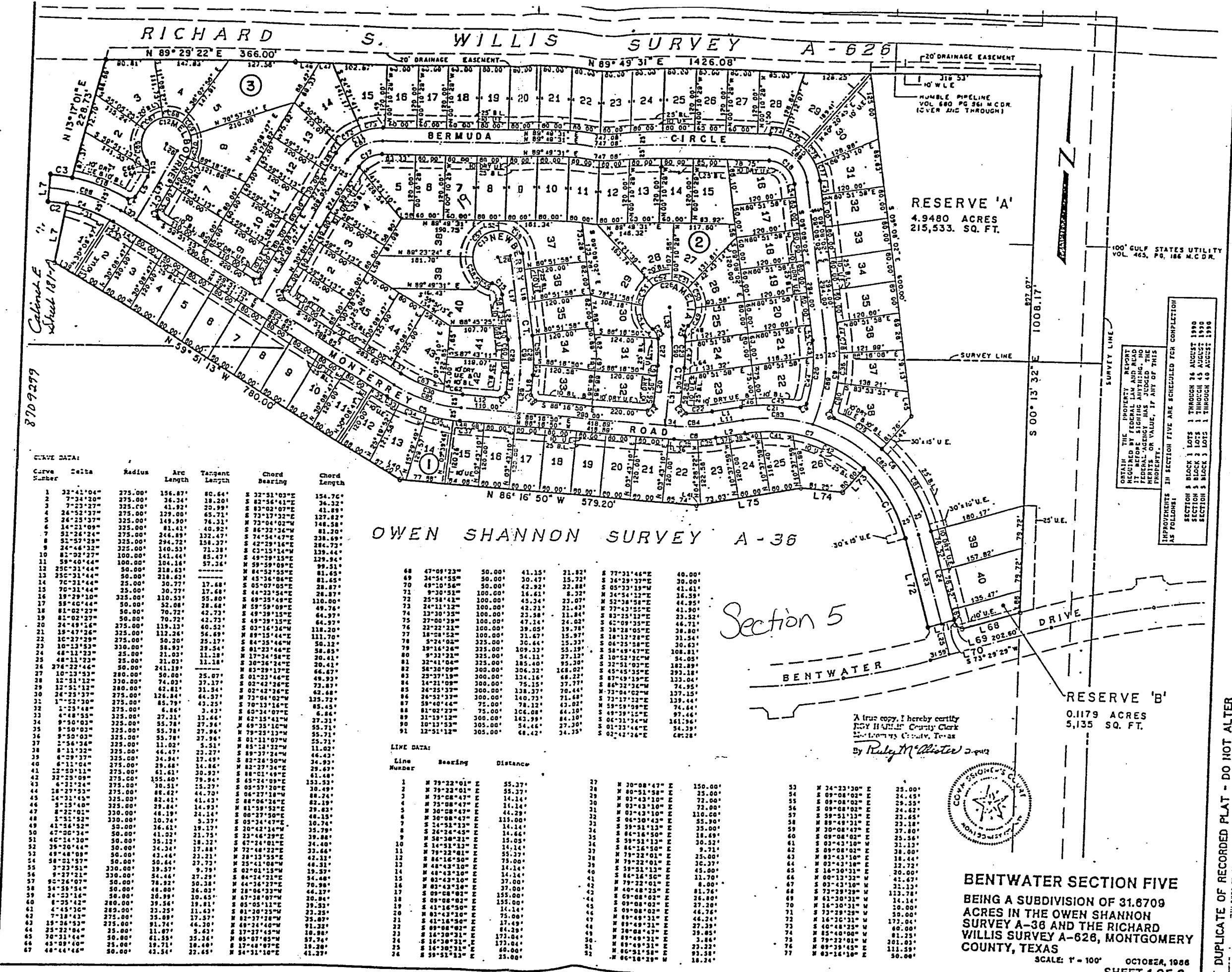


1600 A 1 story
1800 2 story

1000 1 story
2000 A 2 story
519 Masonry



RESERVE 'A'
4.9480 ACRES
215,533. SQ. FT.

100' GULF STATES UTILITY
VOL. 463, PG. 186 M.C.D.R.

OBTAIN THE PROPERTY REPORT
REQUIRED BY FEDERAL LAW AND READ
IT CAREFULLY BEFORE ANYTHING. NO
FEDERAL AGENCY HAS APPROVED THE
PROPERTY. THE REPORT IS NOT A
GUARANTEE OF VALUE. IF ANY OF THIS
PROPERTY.
IMPROVEMENTS AS FOLLOWS:
IN SECTION FIVE ARE SCHEDULED FOR COMPLETION:
SECTION 5 BLOCK 1 LOTS 1 THROUGH 26 AUGUST 1990
SECTION 5 BLOCK 2 LOTS 1 THROUGH 45 AUGUST 1990
SECTION 5 BLOCK 3 LOTS 1 THROUGH 40 AUGUST 1990

CURVE DATA:

Curve Number	Delta	Radius	Arc Length	Tangent Length	Chord Bearing	Chord Length
1	32°41'04"	275.00'	156.87'	80.64'	S 32°51'03"E	154.76'
2	7°23'27"	275.00'	26.34'	18.20'	S 82°56'41"E	36.32'
3	24°52'37"	275.00'	129.00'	50.79'	S 82°02'07"E	141.89'
4	26°25'37"	325.00'	149.90'	76.31'	M 73°07'35"W	127.82'
5	14°21'09"	325.00'	246.89'	40.92'	S 86°32'34"W	81.80'
6	31°26'24"	275.00'	264.89'	132.47'	S 74°54'47"E	238.69'
7	52°27'29"	325.00'	294.72'	158.37'	S 42°29'16"E	284.72'
8	24°56'32"	325.00'	140.53'	71.38'	S 03°15'14"W	139.44'
9	81°02'27"	100.00'	141.44'	85.47'	M 59°29'15"E	64.39'
10	59°40'44"	100.00'	104.16'	57.36'	M 59°29'15"E	129.94'
11	25°31'44"	50.00'	218.63'	111.95'	M 84°52'55"E	99.51'
12	35°31'44"	50.00'	218.63'	111.95'	M 45°36'04"E	81.65'
13	7°23'27"	275.00'	30.77'	17.48'	S 05°07'05"E	28.87'
14	24°52'37"	275.00'	30.77'	17.48'	S 44°23'54"E	28.87'
15	18°29'10"	325.00'	116.33'	55.80'	M 89°35'49"E	110.00'
16	17°29'10"	325.00'	116.33'	55.80'	M 89°35'49"E	49.76'
17	59°40'44"	50.00'	52.08'	28.62'	S 49°39'15"E	44.39'
18	81°02'27"	50.00'	70.72'	42.73'	S 49°39'15"E	64.39'
19	82°02'27"	50.00'	70.72'	42.73'	S 03°16'36"W	118.20'
20	24°49'26"	275.00'	119.13'	60.52'	M 89°15'44"E	111.70'
21	18°29'10"	325.00'	112.26'	56.69'	S 84°35'46"W	50.12'
22	10°23'29"	275.00'	30.20'	17.54'	M 91°23'46"E	58.83'
23	10°23'29"	325.00'	30.20'	17.54'	S 81°23'46"W	20.41'
24	48°11'23"	25.00'	21.03'	11.18'	S 30°36'24"E	19.64'
25	48°11'23"	25.00'	21.03'	11.18'	M 83°29'17"E	66.67'
26	37°42'46"	50.00'	241.19'	121.59'	S 01°23'46"E	49.93'
27	10°23'29"	280.00'	50.00'	25.07'	S 02°42'26"E	73.87'
28	10°23'29"	280.00'	74.09'	37.17'	M 72°41'02"W	62.68'
29	12°51'12"	280.00'	116.33'	55.80'	M 72°41'02"W	125.72'
30	26°25'37"	275.00'	126.84'	64.57'	M 70°12'16"E	65.45'
31	1°52'30"	275.00'	85.79'	43.25'	S 40°34'07"E	27.31'
32	1°52'30"	275.00'	85.79'	43.25'	M 69°25'16"W	55.71'
33	4°48'53"	325.00'	37.31'	13.46'	M 79°25'13"W	55.71'
34	9°50'03"	325.00'	55.78'	27.96'	S 01°11'07"W	11.02'
35	9°50'03"	325.00'	55.78'	27.96'	M 85°22'32"W	46.43'
36	1°56'34"	325.00'	11.02'	5.51'	S 89°37'24"W	34.93'
37	8°11'32"	325.00'	46.47'	23.27'	M 82°27'34"E	29.67'
38	6°29'37"	325.00'	34.94'	17.49'	S 89°37'24"W	61.48'
39	8°11'32"	275.00'	29.68'	14.84'	M 82°27'34"E	132.33'
40	6°12'04"	275.00'	61.61'	30.93'	S 85°21'49"E	88.24'
41	12°50'11"	275.00'	126.84'	64.57'	S 06°27'18"W	82.19'
42	32°25'09"	275.00'	155.40'	79.94'	S 88°06'24"E	29.83'
43	4°21'24"	275.00'	10.51'	5.57'	M 81°39'52"E	48.13'
44	28°27'53"	275.00'	88.42'	44.70'	S 00°27'30"E	10.74'
45	14°21'09"	325.00'	82.41'	41.43'	S 02°42'26"E	25.79'
46	5°31'40"	325.00'	29.44'	14.93'	M 06°27'18"W	34.40'
47	8°22'02"	325.00'	48.19'	24.19'	M 88°06'24"E	32.66'
48	1°51'52"	330.00'	10.74'	5.37'	M 81°39'52"E	42.11'
49	41°56'52"	50.00'	36.62'	19.17'	S 00°27'30"E	48.35'
50	47°30'34"	50.00'	41.92'	21.75'	S 02°42'26"E	39.23'
51	46°14'30"	50.00'	35.12'	18.32'	S 14°51'13"E	34.40'
52	59°40'44"	50.00'	34.34'	17.88'	M 72°46'22"E	32.66'
53	49°48'09"	50.00'	43.44'	21.21'	M 48°43'10"E	14.14'
54	58°21'57"	50.00'	50.44'	27.73'	M 28°33'55"E	44.27'
55	3°23'51"	330.00'	19.57'	9.79'	M 25°41'08"W	48.35'
56	9°27'21"	330.00'	54.46'	27.29'	S 02°01'15"W	34.68'
57	9°27'21"	330.00'	54.46'	27.29'	S 04°24'21"E	70.98'
58	9°26'07"	50.00'	78.92'	50.38'	M 44°36'27"E	44.27'
59	24°52'37"	50.00'	46.00'	26.03'	M 28°06'22"W	20.86'
60	6°35'42"	280.00'	39.56'	19.81'	M 05°35'07"W	39.23'
61	4°45'30"	280.00'	23.25'	11.63'	S 81°20'55"E	22.25'
62	7°18'42"	275.00'	35.09'	17.57'	M 82°37'28"W	35.07'
63	19°26'53"	275.00'	91.74'	46.30'	M 48°24'40"W	51.32'
64	23°22'04"	25.00'	11.07'	5.63'	S 17°37'43"W	10.98'
65	70°31'44"	25.00'	18.00'	15.36'	M 48°07'45"E	57.74'
66	43°09'40"	35.00'	19.71'	18.40'	M 17°48'07"E	18.52'
67	48°44'48"	30.00'	42.54'	22.65'	M 54°31'10"E	41.29'

OWEN SHANNON SURVEY A-36

Line Number	Bearing	Distance
68	47°09'23"	50.00'
69	34°54'55"	50.00'
70	49°10'56"	50.00'
71	9°30'32"	100.00'
72	25°50'42"	100.00'
73	34°11'29"	100.00'
74	13°30'35"	100.00'
75	27°20'39"	100.00'
76	22°22'21"	100.00'
77	18°28'52"	100.00'
78	5°24'02"	325.00'
79	18°14'04"	325.00'
80	9°32'32"	325.00'
81	32°41'04"	325.00'
82	56°30'09"	300.00'
83	23°37'19"	300.00'
84	14°21'09"	300.00'
85	24°25'37"	300.00'
86	26°25'37"	300.00'
87	59°40'44"	75.00'
88	81°02'27"	75.00'
89	31°19'12"	300.00'
90	10°17'53"	305.00'
91	12°51'12"	305.00'

LINE DATA:

Line Number	Bearing	Distance
1	M 79°22'01" E	55.37'
2	M 79°22'01" E	55.37'
3	M 79°22'01" E	55.37'
4	M 79°22'01" E	55.37'
5	M 79°22'01" E	55.37'
6	M 79°22'01" E	55.37'
7	M 79°22'01" E	55.37'
8	M 79°22'01" E	55.37'
9	M 79°22'01" E	55.37'
10	M 79°22'01" E	55.37'
11	M 79°22'01" E	55.37'
12	M 79°22'01" E	55.37'
13	M 79°22'01" E	55.37'
14	M 79°22'01" E	55.37'
15	M 79°22'01" E	55.37'
16	M 79°22'01" E	55.37'
17	M 79°22'01" E	55.37'
18	M 79°22'01" E	55.37'
19	M 79°22'01" E	55.37'
20	M 79°22'01" E	55.37'
21	M 79°22'01" E	55.37'
22	M 79°22'01" E	55.37'
23	M 79°22'01" E	55.37'
24	M 79°22'01" E	55.37'
25	M 79°22'01" E	55.37'
26	M 79°22'01" E	55.37'
27	M 30°08'47" E	150.00'
28	M 80°51'58" E	25.00'
29	M 83°43'10" E	72.00'
30	M 83°43'10" E	72.00'
31	M 30°08'47" E	110.00'
32	M 30°08'47" E	110.00'
33	M 39°51'13" E	35.00'
34	M 39°51'13" E	35.00'
35	M 86°16'50" E	18.69'
36	M 39°51'13" E	10.52'
37	M 86°16'50" E	9.71'
38	M 79°22'01" E	25.00'
39	M 79°22'01" E	25.00'
40	M 79°22'01" E	25.00'
41	M 79°22'01" E	25.00'
42	M 79°22'01" E	25.00'
43	M 79°22'01" E	25.00'
44	M 79°22'01" E	25.00'
45	M 79°22'01" E	25.00'
46	M 79°22'01" E	25.00'
47	M 79°22'01" E	25.00'
48	M 79°22'01" E	25.00'
49	M 79°22'01" E	25.00'
50	M 79°22'01" E	25.00'
51	M 79°22'01" E	25.00'
52	M 79°22'01" E	25.00'
53	M 24°23'30" E	35.00'
54	M 09°08'02" E	24.65'
55	M 09°08'02" E	29.55'
56	M 09°08'02" E	24.62'
57	M 39°51'13" E	23.65'
58	M 86°16'50" E	27.80'
59	M 30°08'47" E	23.18'
60	M 09°08'02" E	25.50'
61	M 03°43'10" W	31.13'
62	M 09°08'02" E	38.00'
63	M 83°43'10" E	18.44'
64	M 86°16'50" E	37.80'
65	M 16°30'31" W	32.72'
66	M 00°13'32" W	20.00'
67	M 03°43'10" W	31.13'
68	M 73°29'29" W	113.78'
69	M 61°30'31" E	14.14'
70	M 83°43'10" E	30.00'
71	M 32°29'29" W	44.76'
72	M 16°30'31" W	39.00'
73	M 40°48'25" W	60.00'
74	M 25°40'00" E	81.25'
75	M 79°22'01" E	201.00'
76	M 89°39'45" E	21.25'
77	M 86°16'50" E	111.59'

A true copy, I hereby certify
ROY HAMILLEN, County Clerk
Montgomery County, Texas
By *Ruby McAllister*



RESERVE 'B'
0.1179 ACRES
5,135 SQ. FT.

BENTWATER SECTION FIVE
BEING A SUBDIVISION OF 31.6709
ACRES IN THE OWEN SHANNON
SURVEY A-36 AND THE RICHARD
WILLIS SURVEY A-626, MONTGOMERY
COUNTY, TEXAS
SCALE: 1" = 100' OCTOBER, 1988
SHEET 1 OF 2

DUPLICATE OF RECORDED PLAT - DO NOT ALTER