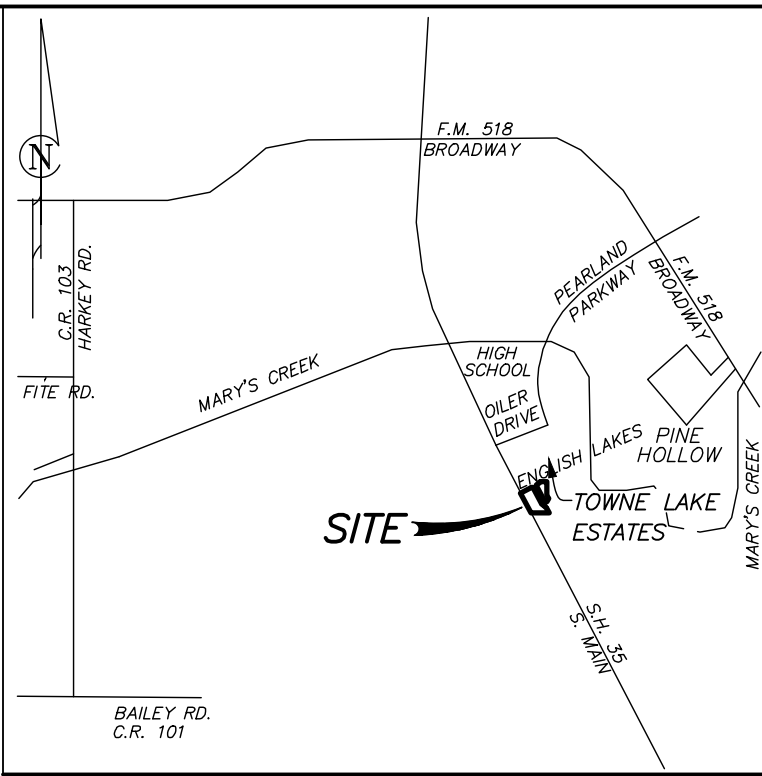
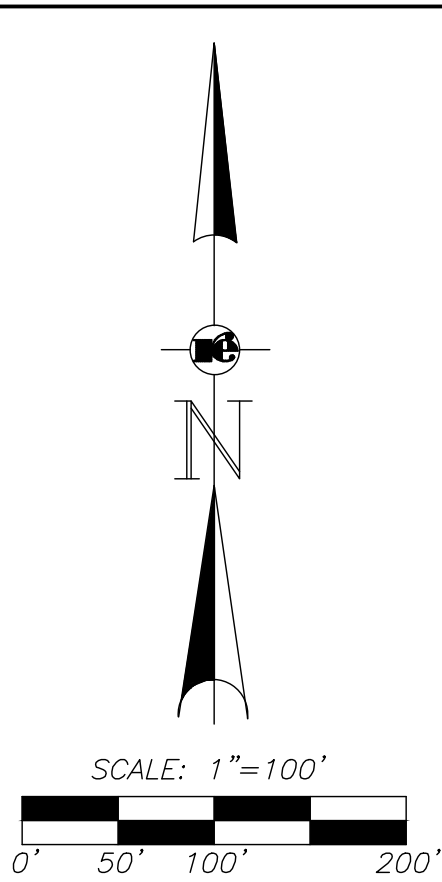


CURVE TABLE — TRACT 3					
CURVE	RADIUS	DELTA	ARC	BEARING	CHORD
C1	865.00'	20°37'16"	311.32'	N 70°28'11" E	309.64'
C2	130.00'	6°32'32"	14.84'	S 80°57'01" W	14.84'
C3	20.00'	34°35'47"	12.08'	N 85°01'22" W	11.89'
C4	50.00'	51°47'52"	45.20'	S 86°22'36" W	43.68'

CURVE TABLE — TRACTS 1 & 2					
CURVE	RADIUS	DELTA	LENGTH	CHORD BEARING	CHORD LENGTH
C1	72.50'	49°37'28"	62.79'	S 47°10'22" E	60.85'
C2	17.50'	50°19'25"	15.37'	S 47°31'20" E	14.88'
C3	107.50'	43°52'06"	82.31'	S 50°43'02" E	80.31'
C4	7.50'	43°52'06"	5.74'	N 50°43'02" W	5.60'
C5	17.50'	50°19'25"	15.37'	S 82°13'10" W	14.88'
C6	72.50'	20°24'58"	25.83'	S 67°15'56" W	25.70'
C7	50.00'	33°32'30"	29.27'	N 44°29'17" E	28.85'
C8	20.00'	62°14'59"	21.73'	N 58°50'31" E	20.68'

LINE TABLE TRACTS 1 & 2		
LINE	BEARING	DISTANCE
L1	N 17°20'55" E	10.00'
L2	N 17°20'55" E	10.00'



VICINITY MAP  
KEY MAP PG. 616-J  
N.T.S.

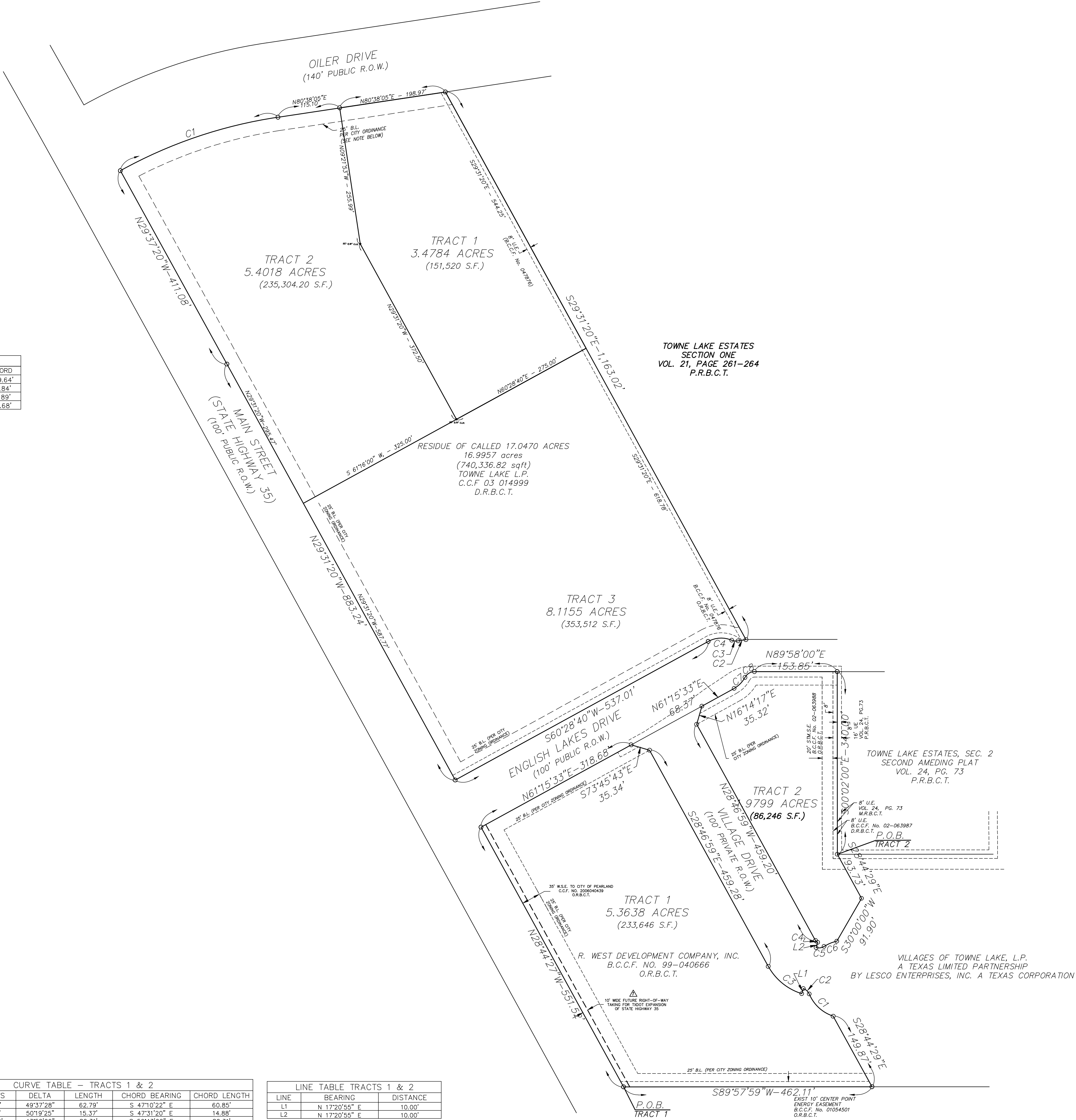


EXHIBIT MAP SHOWING  
3 COMMERCIAL TRACTS  
IN TOWNE LAKE ESTATES

SCALE: 1"=100'  
DATE: 01/18/19

REKHA ENGINEERING INC.

CIVIL ENGINEERS AND LAND SURVEYORS  
7676 Hillmont Road, Suite 3532e20  
Houston, Texas 77040  
Phone: 713-895-8080  
Fax: 713-895-7686  
Email: rekhaengineering@sbcglobal.net  
Website: www.rekhaengineering.com  
CONTACT: JOHN H. ENGLISH

TBPLS No. 10133800 | TBPE No. F-3712  
DRAWN BY: PRV | CHECKED BY: JHE  
APPROVED BY: DNE | JOB No. 0414-4064  
CLIENT: R WEST DEVELOPMENT

SHEET No.  
**A**