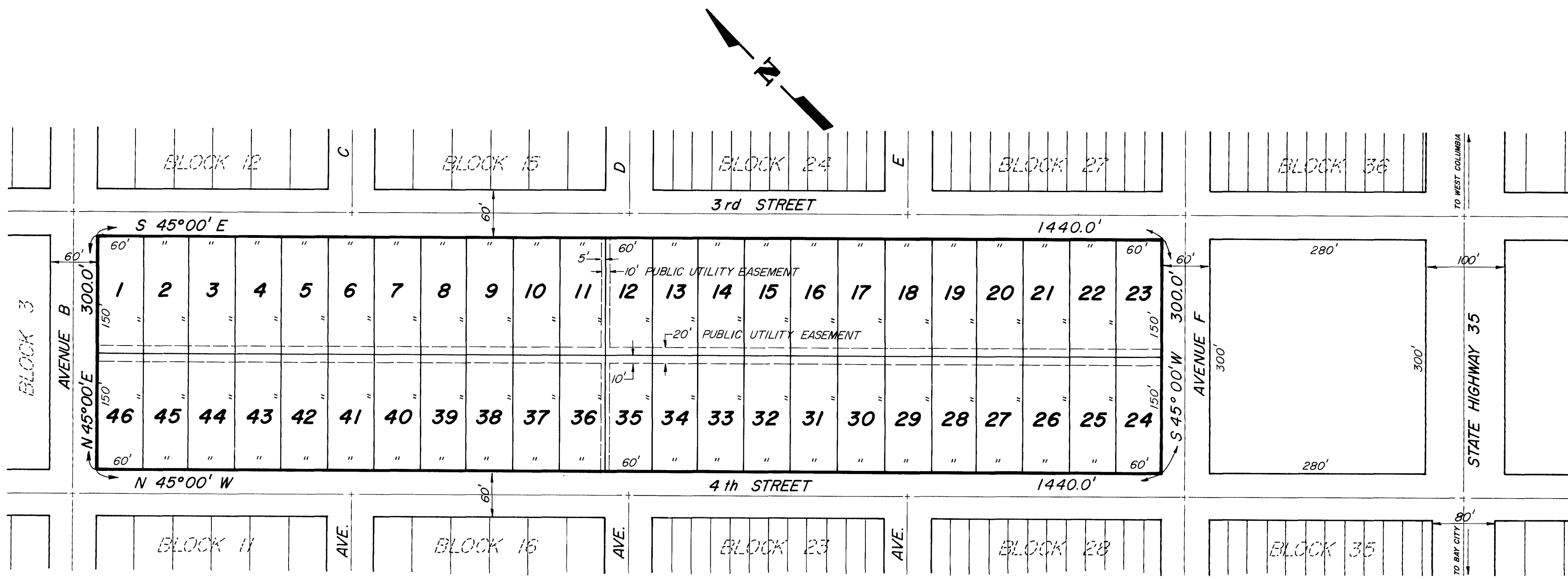


recom'd by MVB
drawn by MVB
checked by MVB
approved by DWG
date JULY 1983
scale 1" = 100'

SURVEYORS
G & W
ENGINEERS
PORT LAVACA, TEXAS
BAY CITY, TEXAS



NORTH RIDGE SUBDIVISION

A SUBDIVISION OF
9.92 ACRES OF LAND
MORE OR LESS,
OUT OF THE
W. J. MAYNARD SURVEY
ABSTRACT NO. 356
IN THE TOWN OF
VAN VLECK
MATAGORDA COUNTY
TEXAS

NORTH RIDGE SUBDIVISION

A SUBDIVISION OF 9.92 ACRES OF LAND MORE OR LESS,
OUT OF THE W.J. MAYNARD SURVEY, ABSTRACT NO. 356,
IN THE TOWN OF VAN VLECK, MATAGORDA COUNTY, TEXAS

REVISIONS

JOB NO.
2-490-2
DWG. NO.
2 of 2