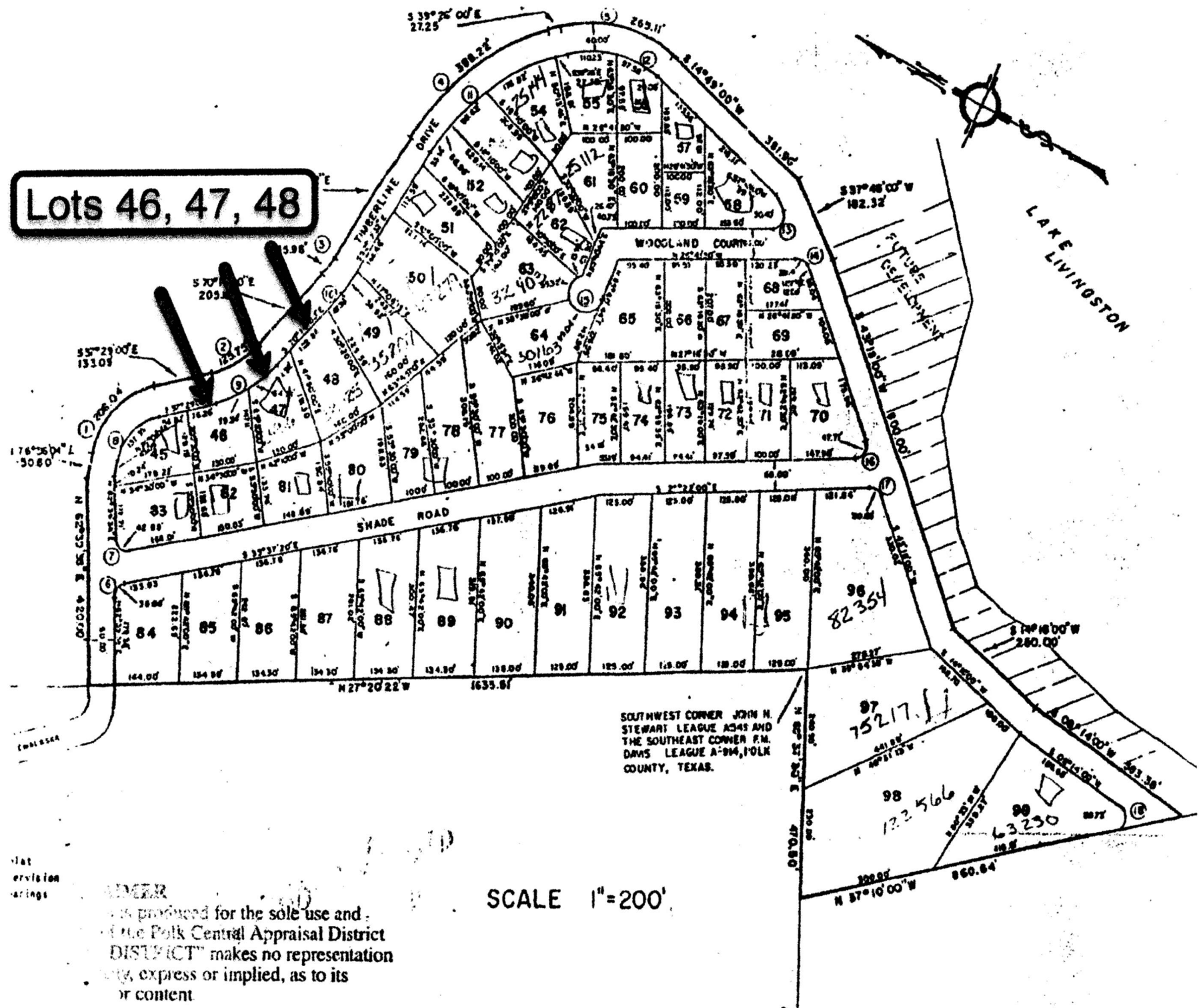


Lots 46, 47, 48



SOUTHWEST CORNER JOHN H. STEWART LEAGUE A-345 AND THE SOUTHEAST CORNER P.M. DAVIS LEAGUE A-94, POLK COUNTY, TEXAS.

Not
a
revision
or
amendment

THIS MAP WAS PRODUCED FOR THE SOLE USE AND OF THE POLK CENTRAL APPRAISAL DISTRICT. THE DISTRICT MAKES NO REPRESENTATION, EXPRESS OR IMPLIED, AS TO ITS ACCURACY OR CONTENT.

SCALE 1"=200'

SPORTSMAN'S RETREAT