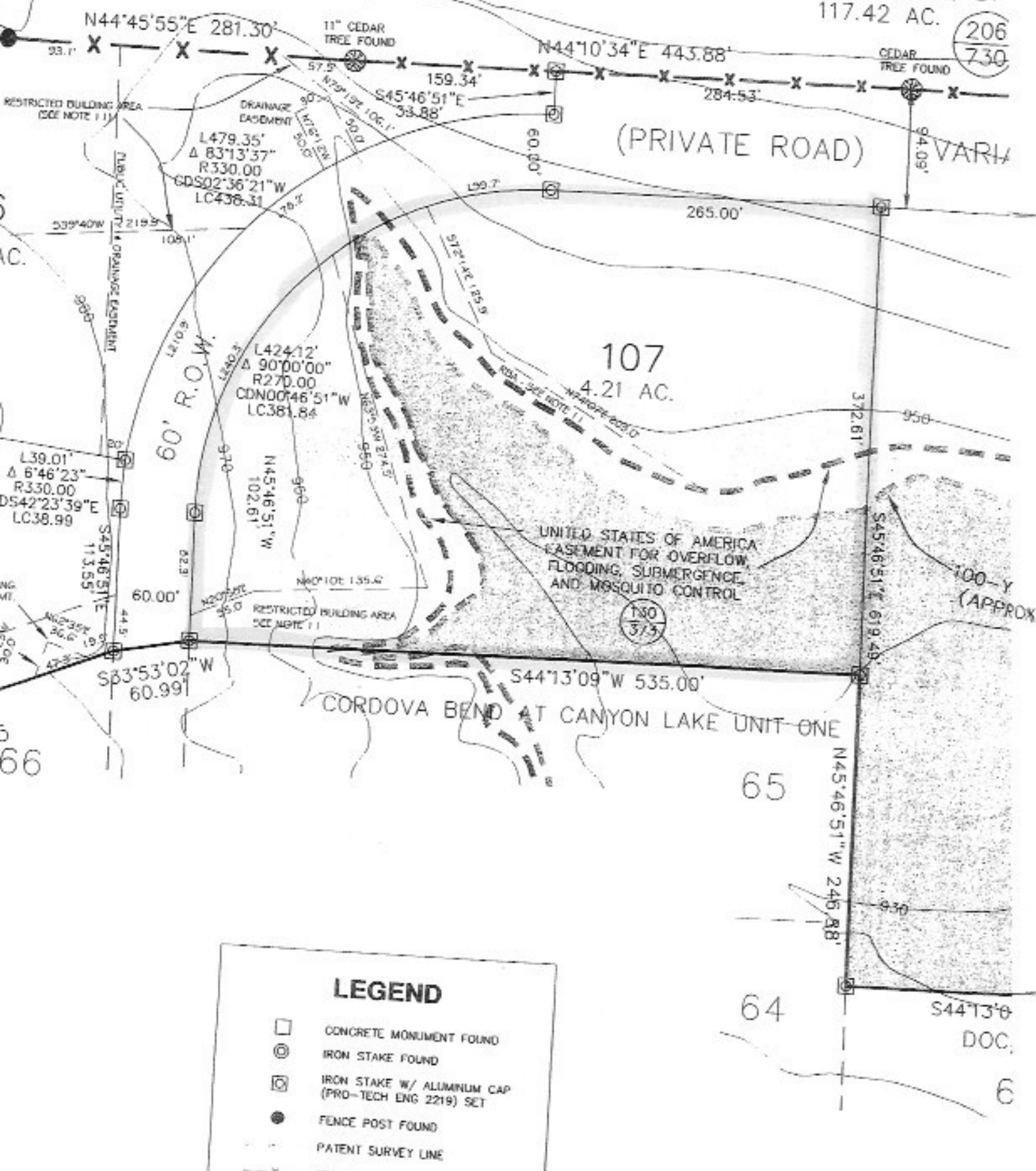


ALWIN KADERLI, ET  
117.42 AC.

206  
730



(PRIVATE ROAD)

107  
4.21 AC.

UNITED STATES OF AMERICA  
EASEMENT FOR OVERFLOW,  
FLOODING, SUBMERGENCE,  
AND MOSQUITO CONTROL

CORDOVA BEND AT CANYON LAKE UNIT ONE

100-Y  
(APPROX)

### LEGEND

- ☐ CONCRETE MONUMENT FOUND
- ⊙ IRON STAKE FOUND
- ⊗ IRON STAKE W/ ALUMINUM CAP (PRO-TECH ENG 2219) SET
- FENCE POST FOUND
- - - PATENT SURVEY LINE

