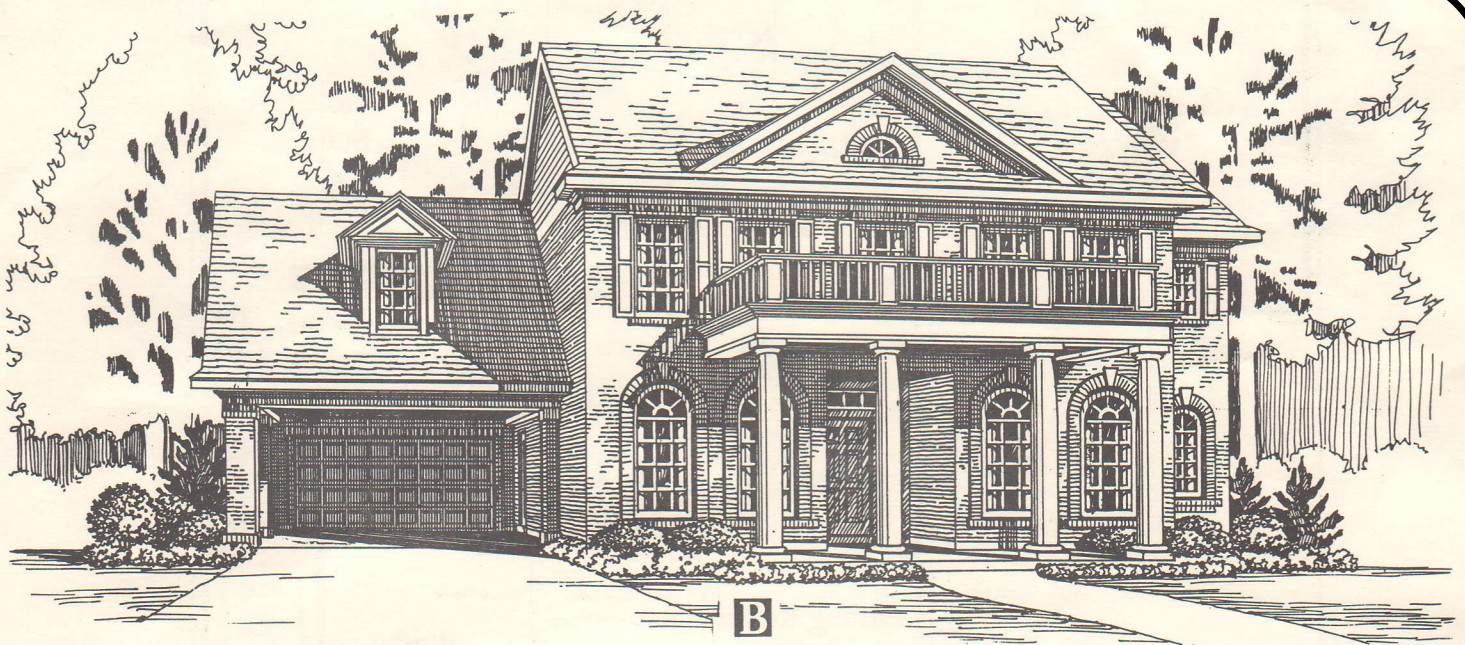
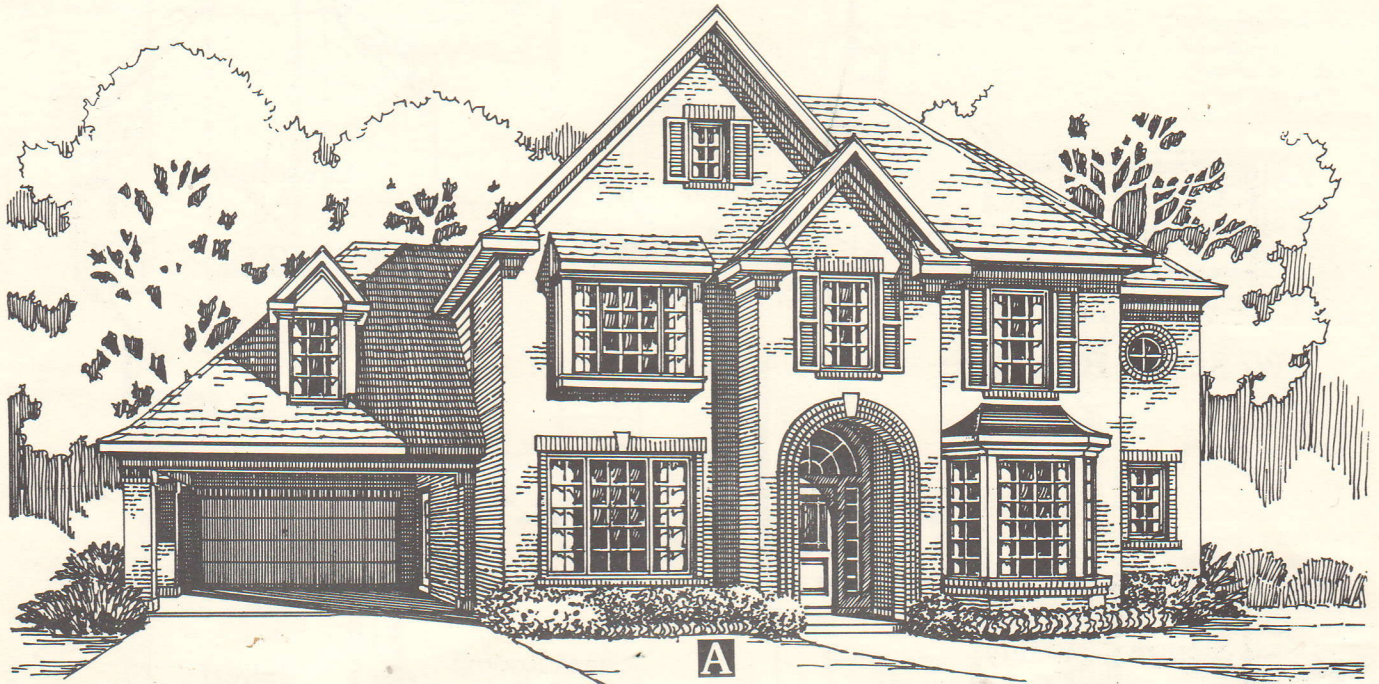


SEVILLE

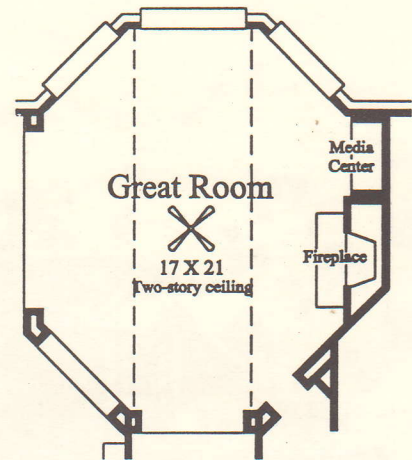
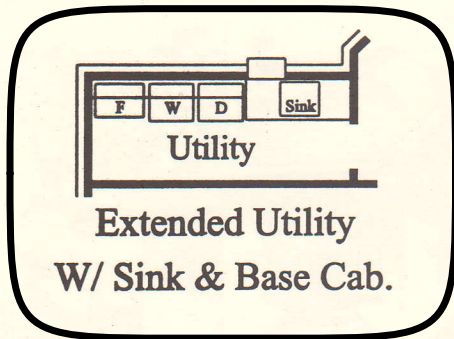
PLAN 381 - 3502 Sq. Ft.



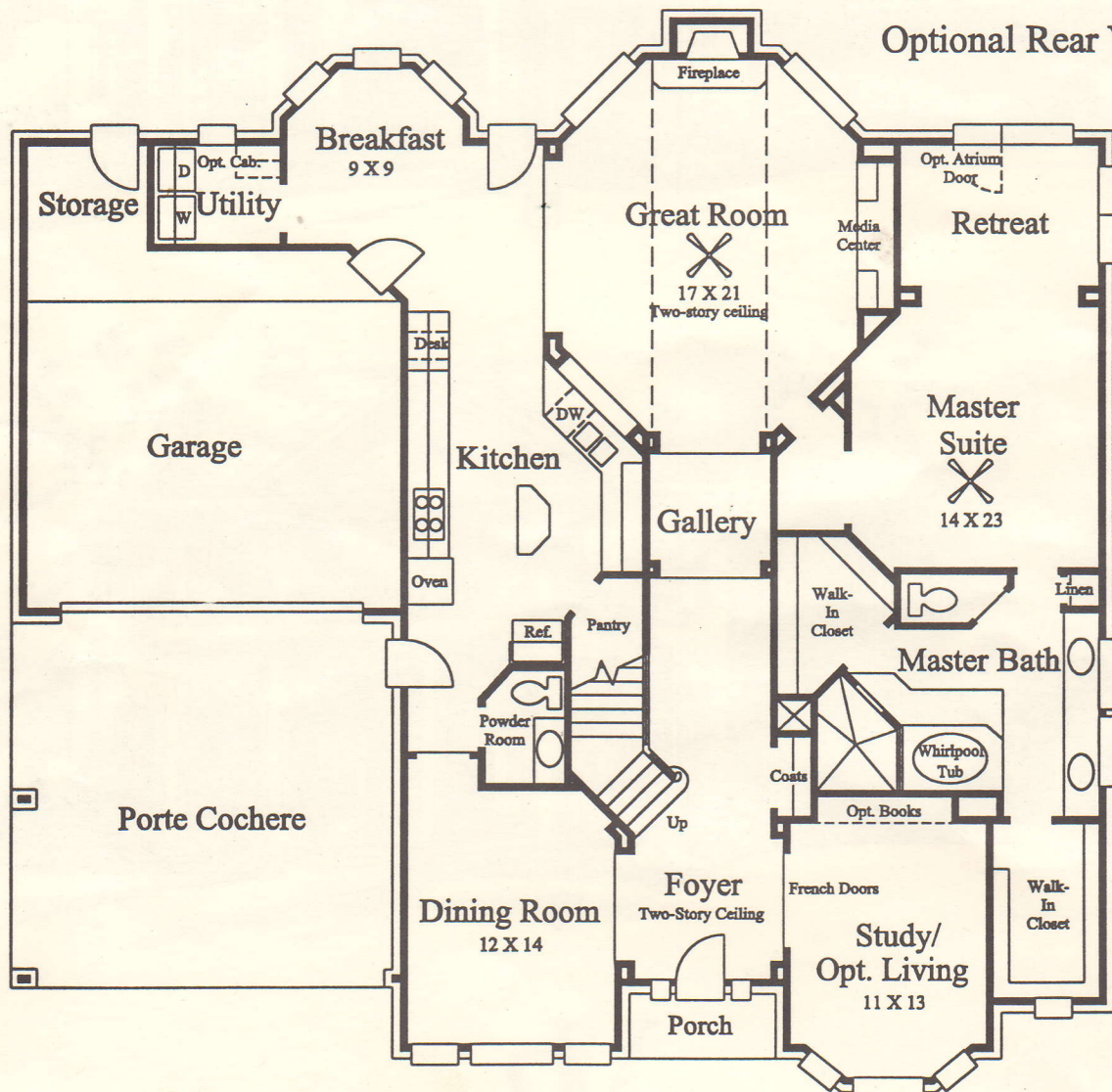
VB

SEVILLE

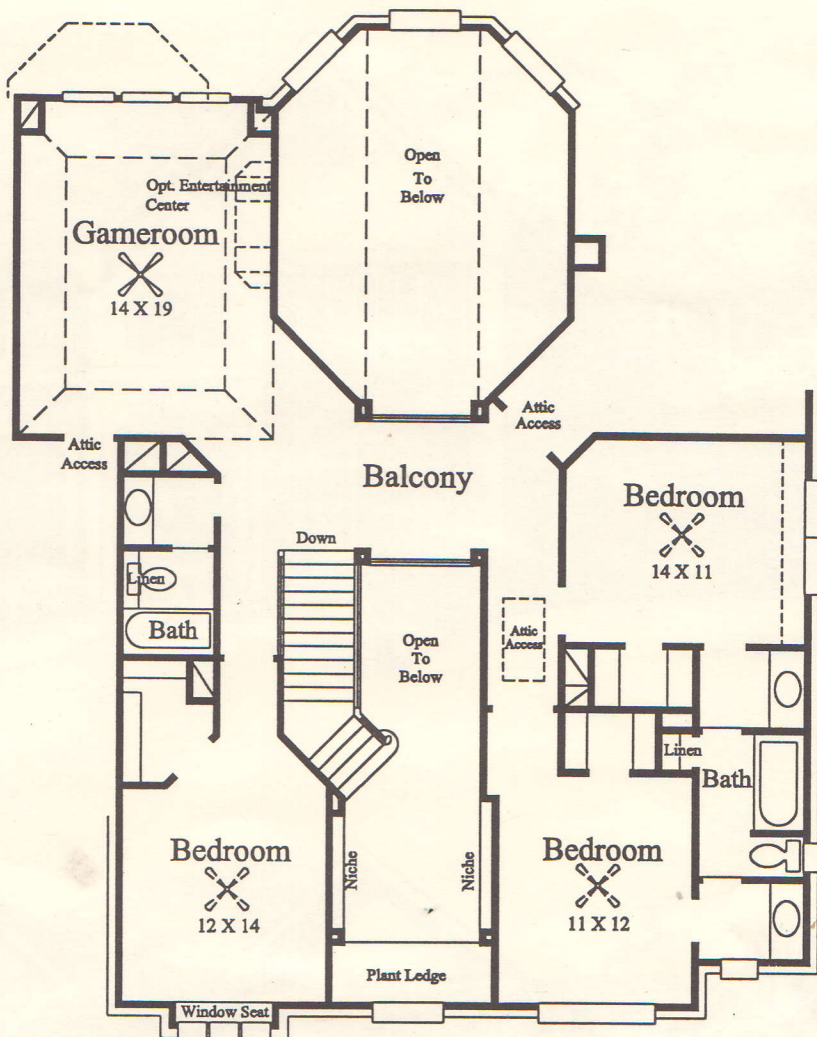
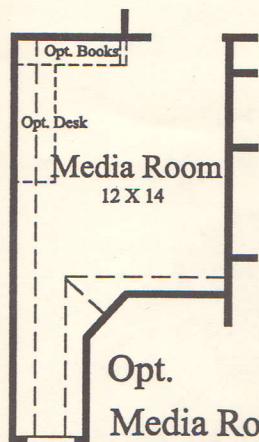
PLAN 381 - 3502 Sq. Ft.



Optional Rear View



First Floor



Second Floor

- Dramatic spacious two-story with attached two-car garage plus a full two-car port cochere.
- Two-story foyer with an angled staircase and a spectacular view into the two-story family room which has a back-vent fireplace and media center.
- Gourmet kitchen, with a cook-top, walk-in pantry and desk, opens to the family room.
- Master suite features a gracious sitting area and sumptuous bath with two oversized walk-in closets and high transom windows for privacy.
- Three large upstairs bedrooms all feature walk-in closets and a fifth bedroom or home office can be an option.
- Spacious gameroom with an optional built-in desk can be converted to a media room or a sixth bedroom.

