

SOUTH FORTY SUBDIVISION
SECTION I
VOLUME 1, PAGE 62 P.R.A.C.T.

MACHEMEHL DR.
(50' R.O.W.)

151

bhl

thl

shl

EX. MANHOLE
(APPROX. LOC.)

APPROX.
BRANCH
LOCATION

APPROX.
ZONE "A"

LOT 6
0.160 AC.

LOT 5
0.160 AC.
ZONE "X"

LOT 4
0.170 AC.

LOT 3
0.170 AC.

LOT 20

10' UTILITY EASEMENT

EXISTING SANIT. SEWER
(APPROX. LOCATION)

EXISTING SANIT. SEWER
(APPROX. LOCATION)

EXISTING SANIT. SEWER
(APPROX. LOCATION)

EXISTING SANIT. SEWER
(APPROX. LOCATION)

EXISTING SANIT. SEWER
(APPROX. LOCATION)

EX. MANHOLE
(APPROX. LOC.)

DAM

5.4' +/-



CITY OF BELLVILLE
BENJAMIN BABBITT LEAGUE
A-13
AUSTIN COUNTY, TEXAS

POND

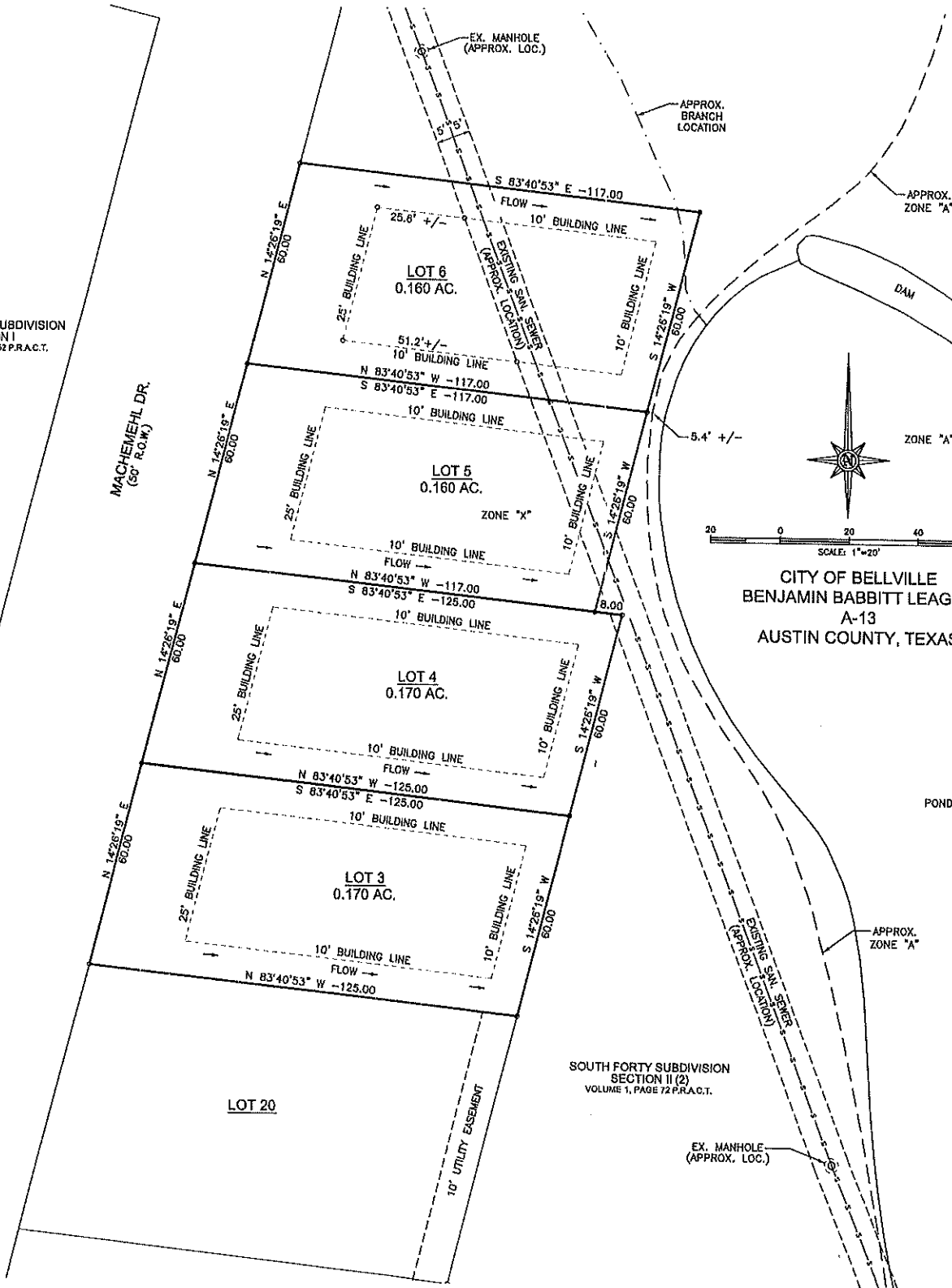
APPROX.
ZONE "A"

SOUTH FORTY SUBDIVISION
SECTION II (2)
VOLUME 1, PAGE 72 P.R.A.C.T.

- NOTES:
1. BASED ON PLAT BY ALEXANDER SURVEYING, DATED SEPTEMBER 13, 2017, GLEN S. ALEXANDER, RPLS NO. 4194 FOR ZACHARY & STEPHANIE USSERY.
 2. ALL WATER RUNOFF WILL FLOW EAST TO THE CREEK/POND.

SOUTH FORTY SUBDIVISION
SECTION I
VOLUME 1, PAGE 52 P.R.A.C.T.

MACHEMEHL DR.
(50' R.O.W.)



CITY OF BELLVILLE
BENJAMIN BABBITT LEAGUE
A-13
AUSTIN COUNTY, TEXAS

SOUTH FORTY SUBDIVISION
SECTION II (2)
VOLUME 1, PAGE 72 P.R.A.C.T.

- NOTES:
1. BASED ON PLAT BY ALEXANDER SURVEYING, DATED SEPTEMBER 13, 2017, GLEN S. ALEXANDER, RPLS NO. 4194 FOR ZACHARY & STEPHANIE USSERY.
 2. ALL WATER RUNOFF WILL FLOW EAST TO THE CREEK/POND.

