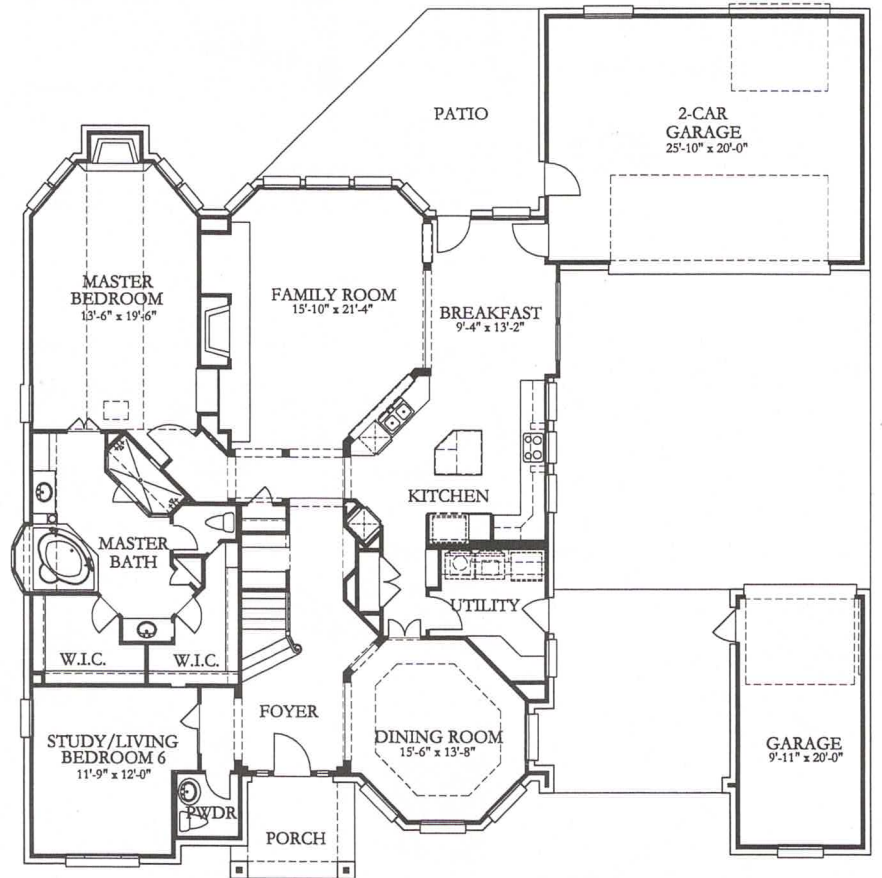
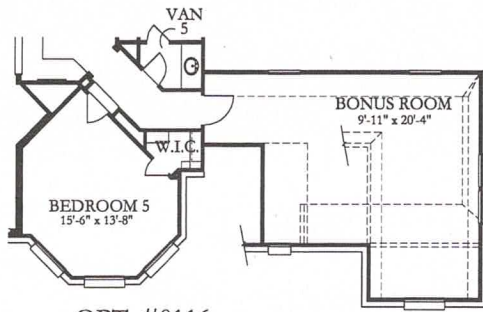


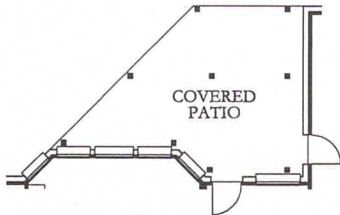
SECOND FLOOR



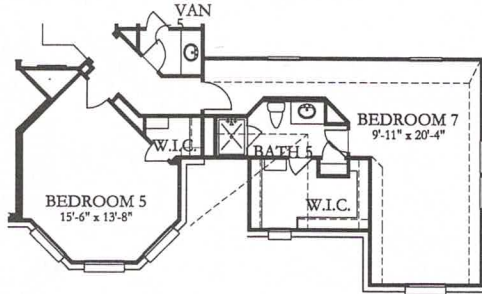
FIRST FLOOR



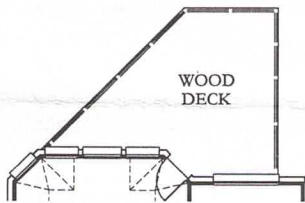
**OPT. #0116:
BONUS ROOM**
From Unfinished Bonus Room +442 Sq.Ft.



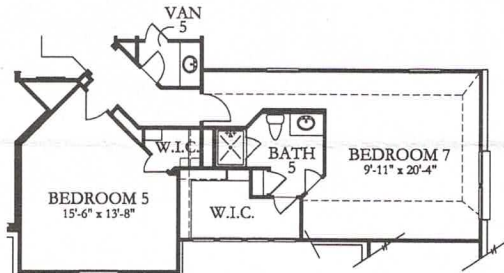
**OPT. #0135:
COVERED PATIO**
From Patio



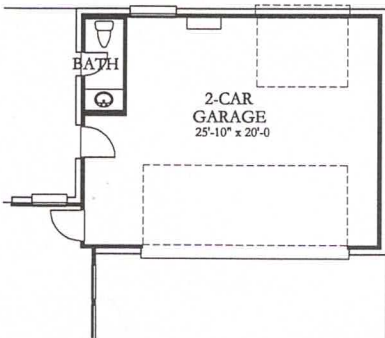
**OPT. #0143:
BEDROOM 7/BATH 5**
From Unfinished Bonus Room - Elevation "A" +463 Sq.Ft.



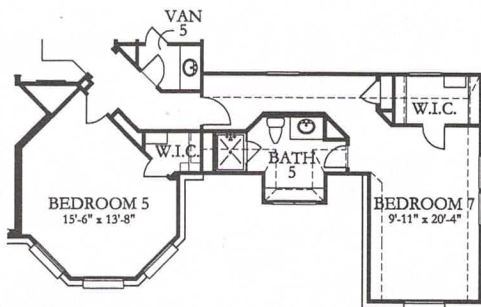
**OPT. #0135:
2ND FLOOR WOOD DECK**
Off Gameroom +256 Sq.Ft.



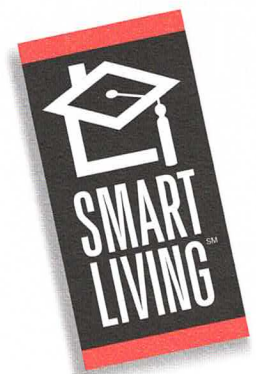
**OPT. #0143:
BEDROOM 7/BATH 5**
From Unfinished Bonus Room - Elevation "N" +443 Sq.Ft.



**OPT. #0098:
CABANA BATH**
From Garage +42 Sq.Ft.



**OPT. #0143:
BEDROOM 7/BATH 5**
From Unfinished Bonus Room - Elevation "P" +411 Sq.Ft.



TAKE A CLOSE LOOK AT THE NEW TRENDMAKER HOME AND YOU'LL IMMEDIATELY KNOW WHY TRENDMAKER IS THE INTELLIGENT CHOICE FOR THE INTELLIGENT HOME BUYER. WE CALL IT SMARTLIVINGSM, A COLLECTION OF OUR EXCLUSIVE SMARTFEATURESSM AND AMENITIES THAT COME STANDARD IN EVERY NEW TRENDMAKER HOME.

SMARTWIRINGSM

AN INTELLIGENT WIRING PACKAGE THAT MAKES YOUR NEW HOME READY TO ACCOMMODATE TOMORROW'S TECHNOLOGY NEEDS TODAY.

SMARTCENTERSM GARAGE

A COLLECTION OF CONVENIENT GARAGE FEATURES FOR INCREASED FUNCTIONALITY.

SMARTENERGYSM

ENERGY-EFFICIENT ADDITIONS THAT EXCEED HL&P'S REQUIREMENTS.

SMARTTOUCHESSM

SMALL, FUNCTIONAL DETAILS THAT MAKE A BIG DIFFERENCE.

SMARTCONSTRUCTION

TRENDMAKER HOMES ARE ENGINEERED AND BUILT TO BE A LASTING REFLECTION OF YOUR INTELLIGENT DECISION.



TRENDMAKER HOMES

THE LEADER IN AFFORDABLE LUXURY

trendmakerhomes.com



* In HL&P service areas only.