



Trails of Katy

Interior Features

- Ceramic Tile in All Wet Areas
- Classique Raised Panel Interior Doors
- Crown Moulding in Master, Dining and Living or Study
- Rounded Sheetrock Corners
- Wood Buring Fireplace
- Wood Mantle with Fluted Legs and Tile Surround
- Raised or Coffered Ceilings (per plan)
- 9' Ceilings on Second Story (per plan)
- Flexible Floorplans to Allow You to Customize
- Wrought Iron Ballusters (per plan)
- Elongated Commodes in Master Bath and Powder Room
- Satin Nickel Finish Door Hardware
- Satin Nickel Finish Light Fixtures
- Arches and Art Niches (per plan)
- Many Plans with Optional Tech Centers
- Plush Carpeting with Quality Pad
- Indoor Laundry Rooms with Shelves

Kitchen/Breakfast Features

- Ceramic Tile Flooring
- Granite Countertops
- Ceramic Tile Backsplash
- Recessed Can Lighting
- Islands Standard in All Plans
- Undermount Stainless Steel Sink
- Moen Pull Out Sprayer Faucet
- Wood Accented Cabinetry with 42" Upper Cabinets with Crown Mould in Many Styles and Color Selections
- Whirlpool Appliance Package Includes: Built in Oven, Gas Cooktop, Dishwasher, Microwave and Vent Hood in Black or White
- Garbage Disposal
- Spacious Pantry with Shelves

Exterior Features

- American Made Clay Brick on Four Sides of First Floor
- Covered Back Patios with Light (per plan)
- Fiber Cement Siding with James Hardi Soffit, Fascia, and Trim
- Large Garages with Storage Spaces (per plan)
- Full Irrigation System
- Fully Sodded Front and Back Yard w/Landscape and 2 Trees
- Cast Stone Address Block
- Six Foot Wood Fenced Back Yard
- Coach Light on Front of Home
- Oversized 8' Mahogany Front Door and Fiberglass 1/2-Lite Rear Door
- Two Exterior Hose Connections
- Screens on All Operable Windows
- Aluminum Rain Gutters and Diverters (per plan)

Master Bath/Bedroom Features

- Oversized Garden Tub & Shower with 12" Ceramic Tile for Shower, Tub Splash, Deck, and Skirt
- Ceramic Tile Flooring
- Dramatic Raised Ceilings (per plan)
- Dual Vanities
- Cultured Marble Countertops and Shower Seat (most plans)
- Quality Moen Plumbing Fixtures
- Large Window in Master Bath to Allow for Lighting
- Spacious Walk-in Closets with A/C Vents

Secondary Bath Features

- Ceramic Tile Flooring
- 6" x 6" Ceramic Tile Tub Surround with a Choice of Colors and Textures and an Accent Stripe
- Quality Moen Plumbing Fixtures

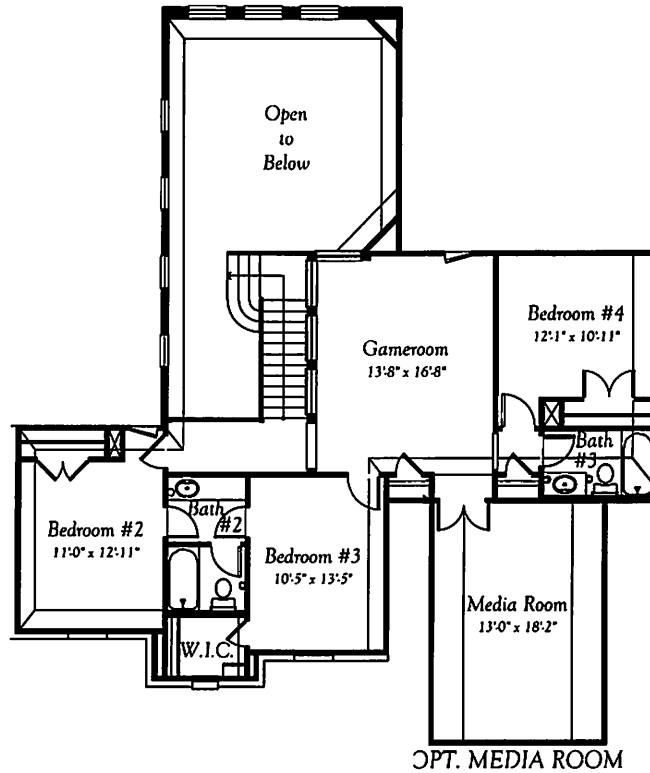
Construction and Energy Features

- Enviroments For Living[®] Program which Provides a Guarantee on the Annual Maximum Heating and Air Conditioning Energy Usage
- Energy Saving Compact Fluorescent Light Bulbs in Most Fixtures
- Tech Shield Radiant Barrier Roof Decking
- Lifetime Limited Warranty Dimensional Shingles
- Ridgevents and/or Air Hawk Ventilation (per plan)
- Continuous Perforated Soffit Venting
- Red Structural Thermoply Sheathing behind Brick (per plan)
- Vinyl Low-E3 Double-Pane Insulated Windows *
- 14 Seer Lennox Air Conditioning System with Fresh Air Ventilation and Jumper Ducts
- Programmable Digital Thermostat
- R-13 Wall Batt Insulation; R-22 Insulation in Sloped Ceilings; and R-30 Insulation in Flat Ceilings
- Alarm System
- Gameroom, Family Room, and Master Bedroom Blocked and Pre-wired for Ceiling Fans
- Engineered Post Tension Foundations
- Windstorm Engineered for 110 mph Winds
- Subfloor is Glued and Screwed Down
- Carbon Monoxide Detectors
- Smoke Detectors with Battery Back Up
- Prewire for Garage Door Opener with Sensor Wiring
- Gas and Electric Outlets for Dryer in Utility Room

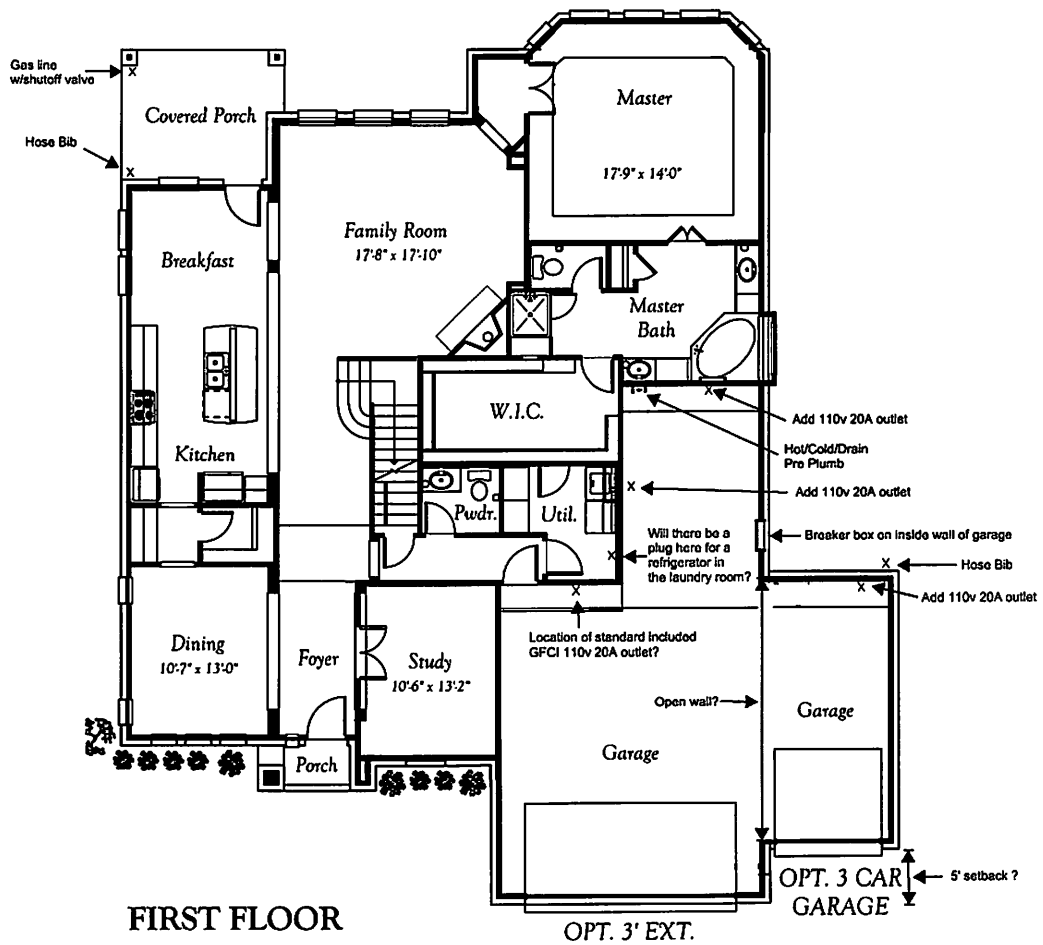
Additional Features

- 10 Year Warranty Program
- Four Hours Complimentary Design Service with Professional Consultant

* For Homes Started After 1/1/2015 Unless Noted Otherwise



SECOND FLOOR



FIRST FLOOR