

**FINAL PLAT**  
**SUMMER WOOD**  
**SECTION TWO**  
A Residential Subdivision  
11.658 ACRES OUT OF THE  
FRANCIS J. COOK SURVEY,  
ABSTRACT 118.  
MONTGOMERY COUNTY, TEXAS  
55 LOTS, 2 BLOCKS  
2 RESERVES  
JUNE 2006

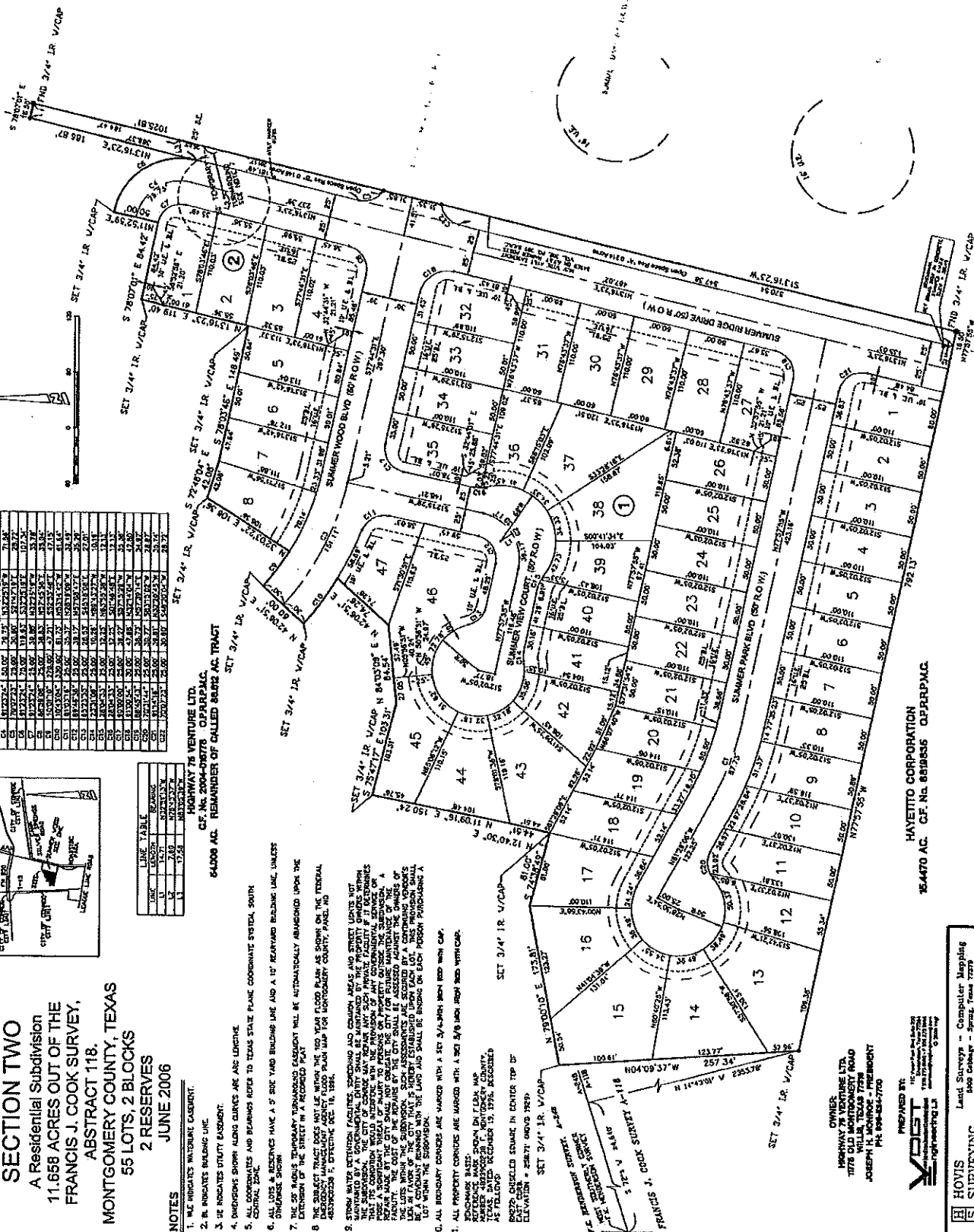
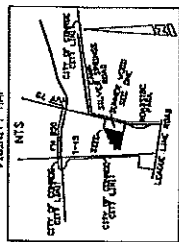
[illegible]

LINE TABLE		
LINE	LENGTH	BEARING
L1	14.71	N072°E13°W
L2	7.80	N78°E32°W
L3	17.58	N035°E19°W

NOTES

1. N/A INDICATES WATERBURE CASSEMENT.

- 500075
1. THE HIGHEST WATERLINE EXISTENT.
2. BL INDICATES BUILDING LINE.
3. HE INDICATES UTILITY EXISTENT.
4. INGRESS/EGRESS ALONG CURVES ARE LONGER.
5. PROPERTY LINES AND BEARINGS REFER TO TEXAS STATE PLANE COORDINATE SYSTEM, SOUTH CENTRAL ZONE.
6. ALL LOTS & RESERVES HAVE A 5' SIDE YARD BUILDING LINE AND A 10' REARWARD BUILDING LINE UNLESS OTHERWISE SHOWN.
7. THE 50' RADII'S TEMPORARY TURNING EXISTENT WILL BE AUTOMATICALLY REMOVED UPON THE EXTENSION OF THE STREET IN A RECORDED PLAN.
8. THE TRACT DOES NOT LIE WITHIN THE 100 YEAR FLOOD PLAIN AS SHOWN ON THE FEDERAL FLOOD INSURANCE MAP, DATED DECEMBER 16, 1984.
9. STORM WATER DRAINAGE FACILITIES, INCLUDING ROADS AND CULVERT AREALS, ARE PROPERTY OWNED BY THE CITY OF DALLAS AND ARE MAINTAINED BY THE CITY OF DALLAS. THE PROPERTY OWNERS MUST MAINTAIN THE FACILITIES IN ACCORDANCE WITH THE PROVISIONS OF ANY GOVERNMENTAL AGENCY THAT THE COUNCILMENT WOULD INTERFERE WITH THE PROVISIONS OF ANY GOVERNMENTAL AGENCY. THE CITY SHALL NOT BE RESPONSIBLE FOR THE MAINTENANCE OF THE FACILITIES. A FUTURE WORK BY THE CITY SHALL NOT BE RESPONSIBLE FOR THE MAINTENANCE OF THE FACILITIES. THE COST OF THE REPAIRS BY THE CITY SHALL BE ASSESSED AGAINST THE OWNER OF THE LOT IN FRONT OF THE CITY THAT THE STREET ESTABLISHED UPON THAT LOT. THIS PROVISION SHALL APPLY TO ALL LOTS IN THE CITY THAT THE STREET ESTABLISHED UPON THAT LOT. THIS PROVISION SHALL NOT APPLY TO THE LOT IN THE CITY THAT THE STREET ESTABLISHED UPON THAT LOT. THIS PROVISION SHALL NOT APPLY TO THE LOT IN THE CITY THAT THE STREET ESTABLISHED UPON THAT LOT.
10. ALL BOUNDARY CORNERS ARE MARKED WITH A SET 3/4" X 1/4" X 1/4" IRON ROD WITH CAP.
11. ALL PROPERTY CORNERS ARE MARKED WITH A SET 3/4" X 1/4" X 1/4" IRON ROD WITH CAP.
12. REVERSEMENT MARK: SHOW ON P.L. 1/4" X 1/4" X 1/4" IRON ROD WITH CAP.
13. REVERSEMENT MARK: SHOW ON P.L. 1/4" X 1/4" X 1/4" IRON ROD WITH CAP.
14. REVERSEMENT MARK: SHOW ON P.L. 1/4" X 1/4" X 1/4" IRON ROD WITH CAP.
15. REVERSEMENT MARK: SHOW ON P.L. 1/4" X 1/4" X 1/4" IRON ROD WITH CAP.
16. REVERSEMENT MARK: SHOW ON P.L. 1/4" X 1/4" X 1/4" IRON ROD WITH CAP.
17. REVERSEMENT MARK: SHOW ON P.L. 1/4" X 1/4" X 1/4" IRON ROD WITH CAP.
18. REVERSEMENT MARK: SHOW ON P.L. 1/4" X 1/4" X 1/4" IRON ROD WITH CAP.
19. REVERSEMENT MARK: SHOW ON P.L. 1/4" X 1/4" X 1/4" IRON ROD WITH CAP.
20. REVERSEMENT MARK: SHOW ON P.L. 1/4" X 1/4" X 1/4" IRON ROD WITH CAP.
21. REVERSEMENT MARK: SHOW ON P.L. 1/4" X 1/4" X 1/4" IRON ROD WITH CAP.
22. REVERSEMENT MARK: SHOW ON P.L. 1/4" X 1/4" X 1/4" IRON ROD WITH CAP.
23. REVERSEMENT MARK: SHOW ON P.L. 1/4" X 1/4" X 1/4" IRON ROD WITH CAP.
24. REVERSEMENT MARK: SHOW ON P.L. 1/4" X 1/4" X 1/4" IRON ROD WITH CAP.
25. REVERSEMENT MARK: SHOW ON P.L. 1/4" X 1/4" X 1/4" IRON ROD WITH CAP.
26. REVERSEMENT MARK: SHOW ON P.L. 1/4" X 1/4" X 1/4" IRON ROD WITH CAP.
27. REVERSEMENT MARK: SHOW ON P.L. 1/4" X 1/4" X 1/4" IRON ROD WITH CAP.
28. REVERSEMENT MARK: SHOW ON P.L. 1/4" X 1/4" X 1/4" IRON ROD WITH CAP.
29. REVERSEMENT MARK: SHOW ON P.L. 1/4" X 1/4" X 1/4" IRON ROD WITH CAP.
30. REVERSEMENT MARK: SHOW ON P.L. 1/4" X 1/4" X 1/4" IRON ROD WITH CAP.
31. REVERSEMENT MARK: SHOW ON P.L. 1/4" X 1/4" X 1/4" IRON ROD WITH CAP.
32. REVERSEMENT MARK: SHOW ON P.L. 1/4" X 1/4" X 1/4" IRON ROD WITH CAP.
33. REVERSEMENT MARK: SHOW ON P.L. 1/4" X 1/4" X 1/4" IRON ROD WITH CAP.
34. REVERSEMENT MARK: SHOW ON P.L. 1/4" X 1/4" X 1/4" IRON ROD WITH CAP.
35. REVERSEMENT MARK: SHOW ON P.L. 1/4" X 1/4" X 1/4" IRON ROD WITH CAP.
36. REVERSEMENT MARK: SHOW ON P.L. 1/4" X 1/4" X 1/4" IRON ROD WITH CAP.
37. REVERSEMENT MARK: SHOW ON P.L. 1/4" X 1/4" X 1/4" IRON ROD WITH CAP.
38. REVERSEMENT MARK: SHOW ON P.L. 1/4" X 1/4" X 1/4" IRON ROD WITH CAP.
39. REVERSEMENT MARK: SHOW ON P.L. 1/4" X 1/4" X 1/4" IRON ROD WITH CAP.
40. REVERSEMENT MARK: SHOW ON P.L. 1/4" X 1/4" X 1/4" IRON ROD WITH CAP.
41. REVERSEMENT MARK: SHOW ON P.L. 1/4" X 1/4" X 1/4" IRON ROD WITH CAP.
42. REVERSEMENT MARK: SHOW ON P.L. 1/4" X 1/4" X 1/4" IRON ROD WITH CAP.
43. REVERSEMENT MARK: SHOW ON P.L. 1/4" X 1/4" X 1/4" IRON ROD WITH CAP.
44. REVERSEMENT MARK: SHOW ON P.L. 1/4" X 1/4" X 1/4" IRON ROD WITH CAP.
45. REVERSEMENT MARK: SHOW ON P.L. 1/4" X 1/4" X 1/4" IRON ROD WITH CAP.
46. REVERSEMENT MARK: SHOW ON P.L. 1/4" X 1/4" X 1/4" IRON ROD WITH CAP.
47. REVERSEMENT MARK: SHOW ON P.L. 1/4" X 1/4" X 1/4" IRON ROD WITH CAP.
48. REVERSEMENT MARK: SHOW ON P.L. 1/4" X 1/4" X 1/4" IRON ROD WITH CAP.
49. REVERSEMENT MARK: SHOW ON P.L. 1/4" X 1/4" X 1/4" IRON ROD WITH CAP.
50. REVERSEMENT MARK: SHOW ON P.L. 1/4" X 1/4" X 1/4" IRON ROD WITH CAP.
51. REVERSEMENT MARK: SHOW ON P.L. 1/4" X 1/4" X 1/4" IRON ROD WITH CAP.
52. REVERSEMENT MARK: SHOW ON P.L. 1/4" X 1/4" X 1/4" IRON ROD WITH CAP.
53. REVERSEMENT MARK: SHOW ON P.L. 1/4" X 1/4" X 1/4" IRON ROD WITH CAP.
54. REVERSEMENT MARK: SHOW ON P.L. 1/4" X 1/4" X 1/4" IRON ROD WITH CAP.
55. REVERSEMENT MARK: SHOW ON P.L. 1/4" X 1/4" X 1/4" IRON ROD WITH CAP.
56. REVERSEMENT MARK: SHOW ON P.L. 1/4" X 1/4" X 1/4" IRON ROD WITH CAP.
57. REVERSEMENT MARK: SHOW ON P.L. 1/4" X 1/4" X 1/4" IRON ROD WITH CAP.
58. REVERSEMENT MARK: SHOW ON P.L. 1/4" X 1/4" X 1/4" IRON ROD WITH CAP.
59. REVERSEMENT MARK: SHOW ON P.L. 1/4" X 1/4" X 1/4" IRON ROD WITH CAP.
60. REVERSEMENT MARK: SHOW ON P.L. 1/4" X 1/4" X 1/4" IRON ROD WITH CAP.
61. REVERSEMENT MARK: SHOW ON P.L. 1/4" X 1/4" X 1/4" IRON ROD WITH CAP.
62. REVERSEMENT MARK: SHOW ON P.L. 1/4" X 1/4" X 1/4" IRON ROD WITH CAP.
63. REVERSEMENT MARK: SHOW ON P.L. 1/4" X 1/4" X 1/4" IRON ROD WITH CAP.
64. REVERSEMENT MARK: SHOW ON P.L. 1/4" X 1/4" X 1/4" IRON ROD WITH CAP.
65. REVERSEMENT MARK: SHOW ON P.L. 1/4" X 1/4" X 1/4" IRON ROD WITH CAP.
66. REVERSEMENT MARK: SHOW ON P.L. 1/4" X 1/4" X 1/4" IRON ROD WITH CAP.
67. REVERSEMENT MARK: SHOW ON P.L. 1/4" X 1/4" X 1/4" IRON ROD WITH CAP.
68. REVERSEMENT MARK: SHOW ON P.L. 1/4" X 1/4" X 1/4" IRON ROD WITH CAP.
69. REVERSEMENT MARK: SHOW ON P.L. 1/4" X 1/4" X 1/4" IRON ROD WITH CAP.
70. REVERSEMENT MARK: SHOW ON P.L. 1/4" X 1/4" X 1/4" IRON ROD WITH CAP.
71. REVERSEMENT MARK: SHOW ON P.L. 1/4" X 1/4" X 1/4" IRON ROD WITH CAP.
72. REVERSEMENT MARK: SHOW ON P.L. 1/4" X 1/4" X 1/4" IRON ROD WITH CAP.
73. REVERSEMENT MARK: SHOW ON P.L. 1/4" X 1/4" X 1/4" IRON ROD WITH CAP.
74. REVERSEMENT MARK: SHOW ON P.L. 1/4" X 1/4" X 1/4" IRON ROD WITH CAP.
75. REVERSEMENT MARK: SHOW ON P.L. 1/4" X 1/4" X 1/4" IRON ROD WITH CAP.
76. REVERSEMENT MARK: SHOW ON P.L. 1/4" X 1/4" X 1/4" IRON ROD WITH CAP.
77. REVERSEMENT MARK: SHOW ON P.L. 1/4" X 1/4" X 1/4" IRON ROD WITH CAP.
78. REVERSEMENT MARK: SHOW ON P.L. 1/4" X 1/4" X 1/4" IRON ROD WITH CAP.
79. REVERSEMENT MARK: SHOW ON P.L. 1/4" X 1/4" X 1/4" IRON ROD WITH CAP.
80. REVERSEMENT MARK: SHOW ON P.L. 1/4" X 1/4" X 1/4" IRON ROD WITH CAP.
81. REVERSEMENT MARK: SHOW ON P.L. 1/4" X 1/4" X 1/4" IRON ROD WITH CAP.
82. REVERSEMENT MARK: SHOW ON P.L. 1/4" X 1/4" X 1/4" IRON ROD WITH CAP.
83. REVERSEMENT MARK: SHOW ON P.L. 1/4" X 1/4" X 1/4" IRON ROD WITH CAP.
84. REVERSEMENT MARK: SHOW ON P.L. 1/4" X 1/4" X 1/4" IRON ROD WITH CAP.
85. REVERSEMENT MARK: SHOW ON P.L. 1/4" X 1/4" X 1/4" IRON ROD WITH CAP.
86. REVERSEMENT MARK: SHOW ON P.L. 1/4" X 1/4" X 1/4" IRON ROD WITH CAP.
87. REVERSEMENT MARK: SHOW ON P.L. 1/4" X 1/4" X 1/4" IRON ROD WITH CAP.
88. REVERSEMENT MARK: SHOW ON P.L. 1/4" X 1/4" X 1/4" IRON ROD WITH CAP.
89. REVERSEMENT MARK: SHOW ON P.L. 1/4" X 1/4" X 1/4" IRON ROD WITH CAP.
90. REVERSEMENT MARK: SHOW ON P.L. 1/4" X 1/4" X 1/4" IRON ROD WITH CAP.
91. REVERSEMENT MARK: SHOW ON P.L. 1/4" X 1/4" X 1/4" IRON ROD WITH CAP.
92. REVERSEMENT MARK: SHOW ON P.L. 1/4" X 1/4" X 1/4" IRON ROD WITH CAP.
93. REVERSEMENT MARK: SHOW ON P.L. 1/4" X 1/4" X 1/4" IRON ROD WITH CAP.
94. REVERSEMENT MARK: SHOW ON P.L. 1/4" X 1/4" X 1/4" IRON ROD WITH CAP.
95. REVERSEMENT MARK: SHOW ON P.L. 1/4" X 1/4" X 1/4" IRON ROD WITH CAP.
96. REVERSEMENT MARK: SHOW ON P.L. 1/4" X 1/4" X 1/4" IRON ROD WITH CAP.
97. REVERSEMENT MARK: SHOW ON P.L. 1/4" X 1/4" X 1/4" IRON ROD WITH CAP.
98. REVERSEMENT MARK: SHOW ON P.L. 1/4" X 1/4" X 1/4" IRON ROD WITH CAP.
99. REVERSEMENT MARK: SHOW ON P.L. 1/4" X 1/4" X 1/4"



HAYETTO CORPORATION  
154470 AC. C.F. No. 8819835 Q.P.R.R.P.M.C.

**UNEXPIRED BYE**

**POST**

112 West 4th Street Suite 200  
Chattanooga, TN 37404  
1-800-373-8888 • FAX 423-2644

See how the best is better done.

**H. HOVIS  
SURVEYING  
COMPANY**

Land Surveys - Computer Mapping  
5000 Cobby - Spring, Texas 77379  
(281) 320-1031  
Acreage - Gradualment - Industrial - Commercial