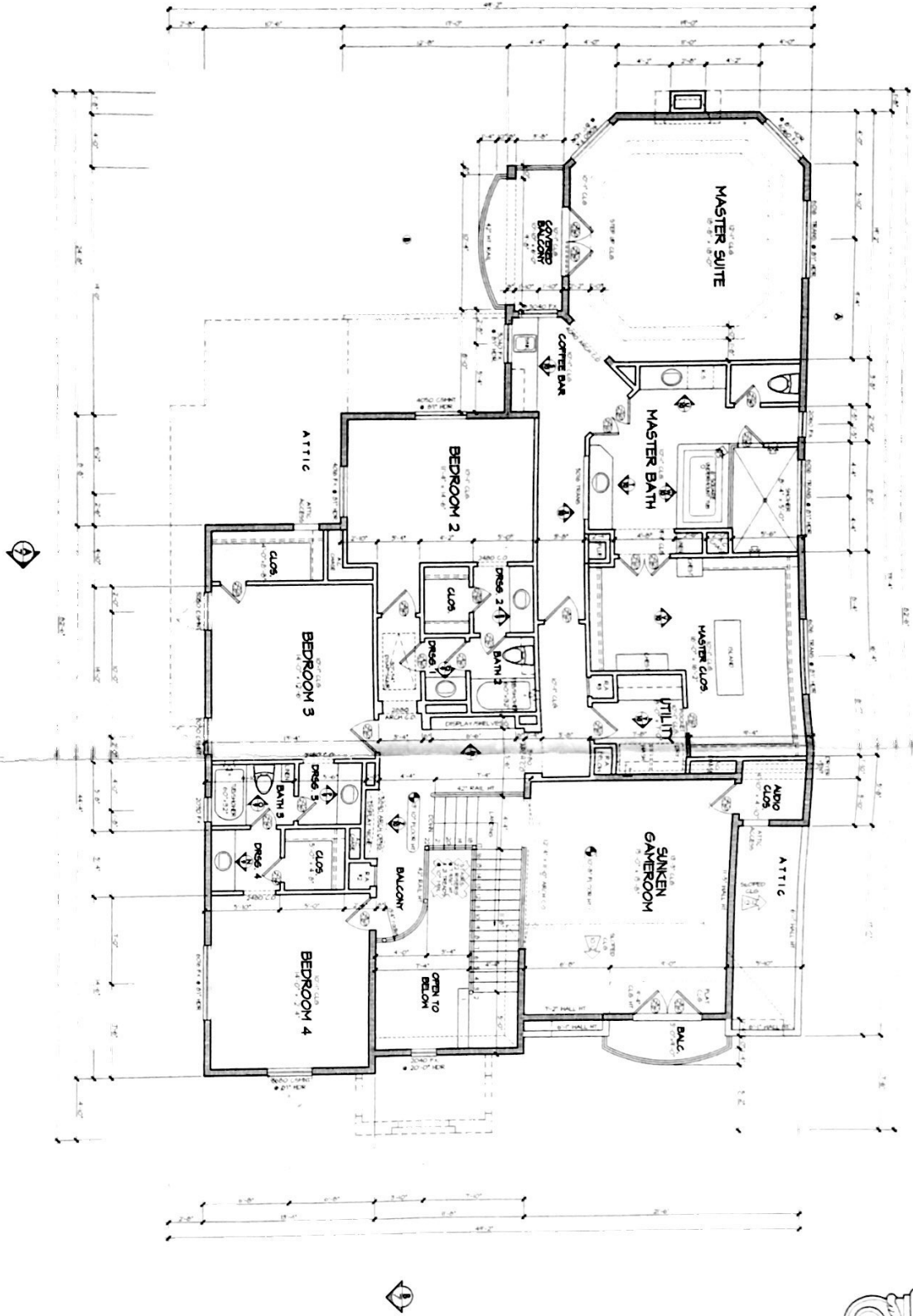
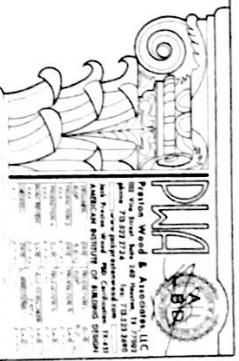


COPYRIGHT 2012



# SECOND FLOOR PLAN

SCALE: 1/8" = 1'-0" (SEE ARCHITECTURAL NOTES FOR DIMENSIONS AND FINISHES)  
PREPARED BY: [NAME]  
CHECKED BY: [NAME]  
DATE: 10/10/2012



**EGRESS REQUIREMENTS**

ALL ROOMS SHALL HAVE ONE OR MORE EXITS TO THE OUTSIDE. EXITS SHALL BE UNOBSTRUCTED AND CLEARLY MARKED. EXITS SHALL BE AT LEAST 44" CLEAR HEIGHT AND 44" CLEAR WIDTH. EXITS SHALL BE AT LEAST 20" CLEAR WIDTH. EXITS SHALL BE AT LEAST 6" CLEAR FROM THE WALL TO THE EDGE OF THE DOOR.

ALL EXITS SHALL BE MARKED WITH A SIGN WHICH SHALL BE AT LEAST 6" X 6" IN SIZE AND SHALL BE PLACED AT LEAST 6" FROM THE TOP AND BOTTOM EDGES OF THE DOOR. THE SIGN SHALL BE PLACED AT LEAST 4" FROM THE RIGHT EDGE OF THE DOOR.

ALL EXITS SHALL BE MARKED WITH A SIGN WHICH SHALL BE AT LEAST 6" X 6" IN SIZE AND SHALL BE PLACED AT LEAST 6" FROM THE TOP AND BOTTOM EDGES OF THE DOOR. THE SIGN SHALL BE PLACED AT LEAST 4" FROM THE RIGHT EDGE OF THE DOOR.

SYMBOLS	DESCRIPTION
↻	DOOR SCHEDULE
☼	WINDOW SCHEDULE
▭	WALL
▭	FLOOR
▭	Ceiling
▭	Stairs
▭	Balcony
▭	Open to Below
▭	Attic
▭	Basement
▭	Basement Below
▭	Basement Above
▭	Basement Below
▭	Basement Above

**LINE LEGEND**

LINE TYPE	DESCRIPTION
----	1/2" THICK WALL
----	1/4" THICK WALL
----	1/2" THICK WALL
----	1/4" THICK WALL
----	1/2" THICK WALL
----	1/4" THICK WALL
----	1/2" THICK WALL
----	1/4" THICK WALL

**SQUARE FOOTAGES**

ROOM	AREA
1ST FLOOR	5220
2ND FLOOR	2548
TOTAL INDOOR LIVING	4292 SF
GARAGE	734
FRONT PORCH	64
REAR PORCH	64
OUTDOOR LIVING	280
TOTAL SLAB	534 SF
BALCONIES	3246
TOTAL COVER	8592 SF

**ICONSTRUX**

OAK FOREST LOT 34, BLOCK 4  
1214 CHRYSTALE RD HOUSTON, TX 77088

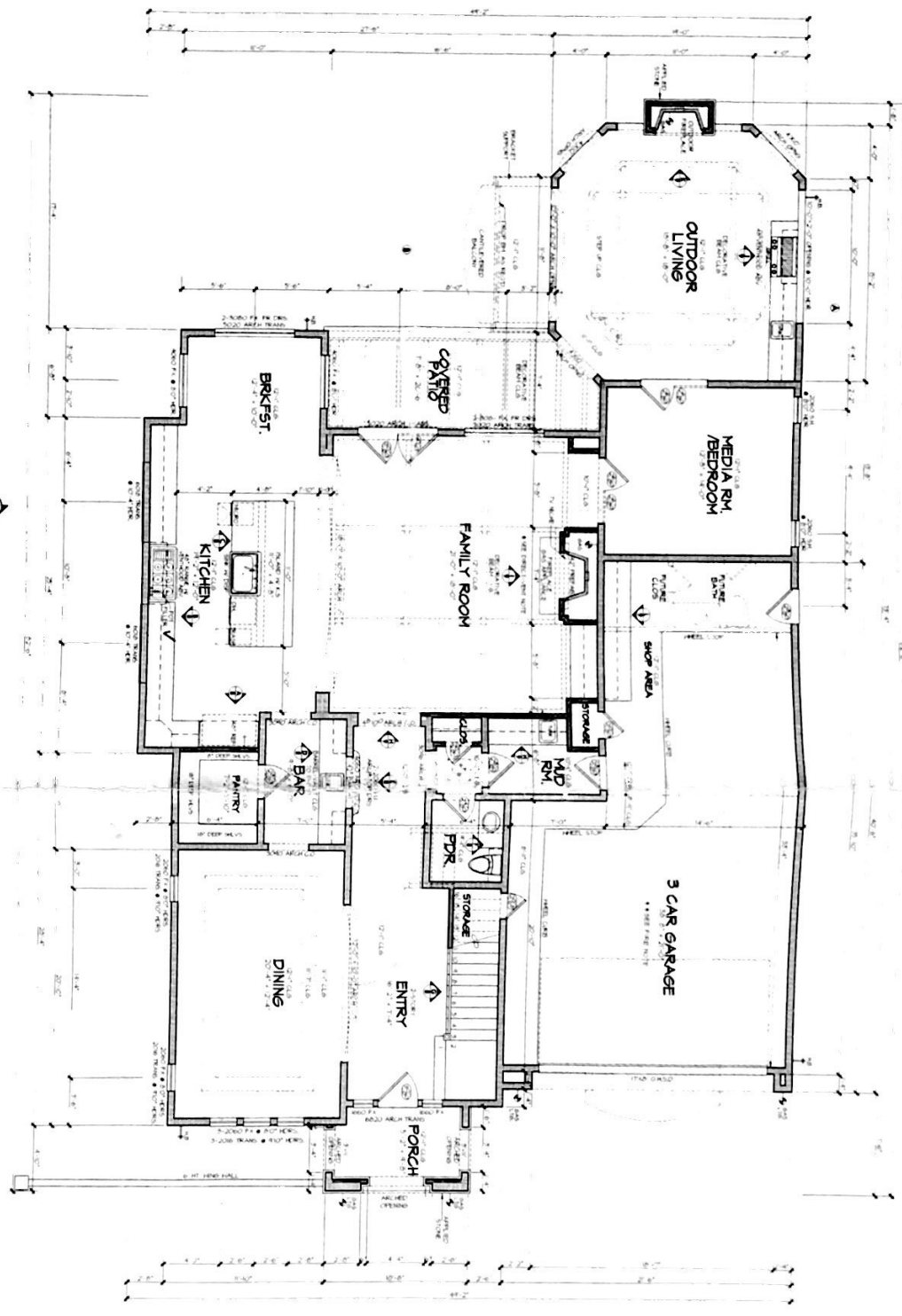
E2184\E2184-V2 4 of 14

DATE: 10/10/2012

COPYRIGHT 2012

**DIRECT VENT TERMINATION**  
 DIRECT VENT TERMINATION SHALL BE INSTALLED IN ACCORDANCE WITH THE MANUFACTURER'S INSTALLATION INSTRUCTIONS. THE TERMINATION SHALL BE INSTALLED IN A LOCATION THAT DOES NOT OBSTRUCT THE VIEW OR CAUSE AIR POLLUTION. THE TERMINATION SHALL BE INSTALLED IN A LOCATION THAT DOES NOT CAUSE AIR POLLUTION. THE TERMINATION SHALL BE INSTALLED IN A LOCATION THAT DOES NOT CAUSE AIR POLLUTION.

**NOTE**  
 THE CONTRACTOR SHALL BE RESPONSIBLE FOR OBTAINING ALL NECESSARY PERMITS AND APPROVALS FROM THE LOCAL AUTHORITIES. THE CONTRACTOR SHALL BE RESPONSIBLE FOR OBTAINING ALL NECESSARY PERMITS AND APPROVALS FROM THE LOCAL AUTHORITIES. THE CONTRACTOR SHALL BE RESPONSIBLE FOR OBTAINING ALL NECESSARY PERMITS AND APPROVALS FROM THE LOCAL AUTHORITIES.



**FIRST FLOOR PLAN**

SCALE: 1/8" = 1'-0"  
 FINISH FLOOR CONSTRUCTION SHOWN

HCAS  
 Lot 731C

SYMBOLS	
	DOOR SWING
	WINDOW SWING
	STAIRS
	WALL
	WINDOW
	DOOR
	WALL OPENING
	WINDOW OPENING
	DOOR OPENING
	WALL OPENING WITH DOOR
	WINDOW OPENING WITH DOOR
	DOOR OPENING WITH WINDOW
	WINDOW OPENING WITH DOOR
	WALL OPENING WITH WINDOW
	WINDOW OPENING WITH WINDOW
	DOOR OPENING WITH WINDOW AND DOOR
	WINDOW OPENING WITH WINDOW AND DOOR
	WALL OPENING WITH WINDOW AND DOOR
	WINDOW OPENING WITH WINDOW AND DOOR

LINE LEGEND	
	WALL
	WINDOW
	DOOR
	WALL OPENING
	WINDOW OPENING
	DOOR OPENING
	WALL OPENING WITH DOOR
	WINDOW OPENING WITH DOOR
	DOOR OPENING WITH WINDOW
	WINDOW OPENING WITH WINDOW
	WALL OPENING WITH WINDOW AND DOOR
	WINDOW OPENING WITH WINDOW AND DOOR
	DOOR OPENING WITH WINDOW AND DOOR
	WINDOW OPENING WITH WINDOW AND DOOR

SYMBOLS	
	DOOR SWING
	WINDOW SWING
	STAIRS
	WALL
	WINDOW
	DOOR
	WALL OPENING
	WINDOW OPENING
	DOOR OPENING
	WALL OPENING WITH DOOR
	WINDOW OPENING WITH DOOR
	DOOR OPENING WITH WINDOW
	WINDOW OPENING WITH WINDOW
	WALL OPENING WITH WINDOW AND DOOR
	WINDOW OPENING WITH WINDOW AND DOOR
	DOOR OPENING WITH WINDOW AND DOOR
	WINDOW OPENING WITH WINDOW AND DOOR

SYMBOLS	
	DOOR SWING
	WINDOW SWING
	STAIRS
	WALL
	WINDOW
	DOOR
	WALL OPENING
	WINDOW OPENING
	DOOR OPENING
	WALL OPENING WITH DOOR
	WINDOW OPENING WITH DOOR
	DOOR OPENING WITH WINDOW
	WINDOW OPENING WITH WINDOW
	WALL OPENING WITH WINDOW AND DOOR
	WINDOW OPENING WITH WINDOW AND DOOR
	DOOR OPENING WITH WINDOW AND DOOR
	WINDOW OPENING WITH WINDOW AND DOOR

SYMBOLS	
	DOOR SWING
	WINDOW SWING
	STAIRS
	WALL
	WINDOW
	DOOR
	WALL OPENING
	WINDOW OPENING
	DOOR OPENING
	WALL OPENING WITH DOOR
	WINDOW OPENING WITH DOOR
	DOOR OPENING WITH WINDOW
	WINDOW OPENING WITH WINDOW
	WALL OPENING WITH WINDOW AND DOOR
	WINDOW OPENING WITH WINDOW AND DOOR
	DOOR OPENING WITH WINDOW AND DOOR
	WINDOW OPENING WITH WINDOW AND DOOR

SYMBOLS	
	DOOR SWING
	WINDOW SWING
	STAIRS
	WALL
	WINDOW
	DOOR
	WALL OPENING
	WINDOW OPENING
	DOOR OPENING
	WALL OPENING WITH DOOR
	WINDOW OPENING WITH DOOR
	DOOR OPENING WITH WINDOW
	WINDOW OPENING WITH WINDOW
	WALL OPENING WITH WINDOW AND DOOR
	WINDOW OPENING WITH WINDOW AND DOOR
	DOOR OPENING WITH WINDOW AND DOOR
	WINDOW OPENING WITH WINDOW AND DOOR

SYMBOLS	
	DOOR SWING
	WINDOW SWING
	STAIRS
	WALL
	WINDOW
	DOOR
	WALL OPENING
	WINDOW OPENING
	DOOR OPENING
	WALL OPENING WITH DOOR
	WINDOW OPENING WITH DOOR
	DOOR OPENING WITH WINDOW
	WINDOW OPENING WITH WINDOW
	WALL OPENING WITH WINDOW AND DOOR
	WINDOW OPENING WITH WINDOW AND DOOR
	DOOR OPENING WITH WINDOW AND DOOR
	WINDOW OPENING WITH WINDOW AND DOOR

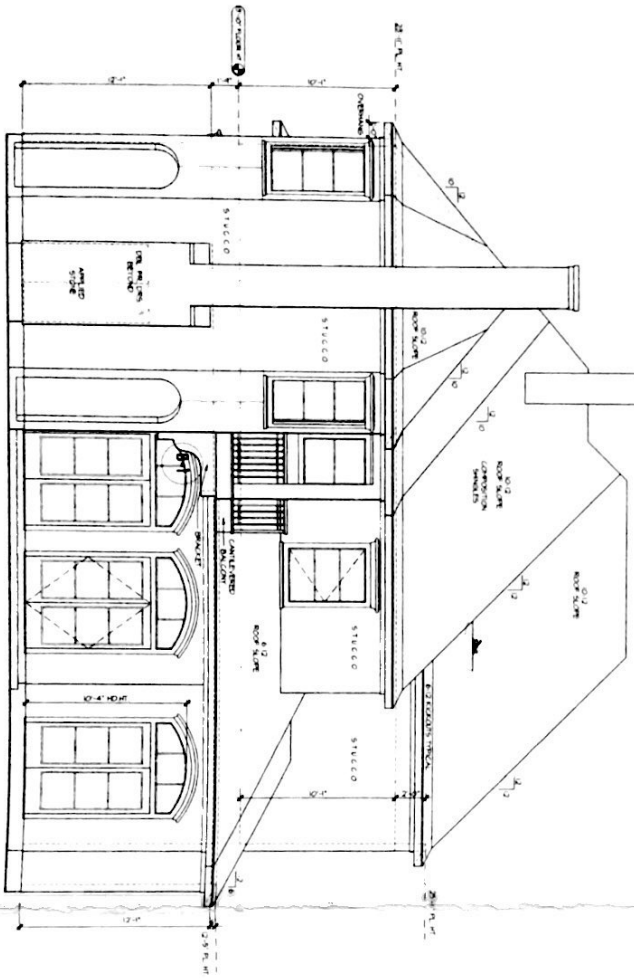
SYMBOLS	
	DOOR SWING
	WINDOW SWING
	STAIRS
	WALL
	WINDOW
	DOOR
	WALL OPENING
	WINDOW OPENING
	DOOR OPENING
	WALL OPENING WITH DOOR
	WINDOW OPENING WITH DOOR
	DOOR OPENING WITH WINDOW
	WINDOW OPENING WITH WINDOW
	WALL OPENING WITH WINDOW AND DOOR
	WINDOW OPENING WITH WINDOW AND DOOR
	DOOR OPENING WITH WINDOW AND DOOR
	WINDOW OPENING WITH WINDOW AND DOOR

SYMBOLS	
	DOOR SWING
	WINDOW SWING
	STAIRS
	WALL
	WINDOW
	DOOR
	WALL OPENING
	WINDOW OPENING
	DOOR OPENING
	WALL OPENING WITH DOOR
	WINDOW OPENING WITH DOOR
	DOOR OPENING WITH WINDOW
	WINDOW OPENING WITH WINDOW
	WALL OPENING WITH WINDOW AND DOOR
	WINDOW OPENING WITH WINDOW AND DOOR
	DOOR OPENING WITH WINDOW AND DOOR
	WINDOW OPENING WITH WINDOW AND DOOR

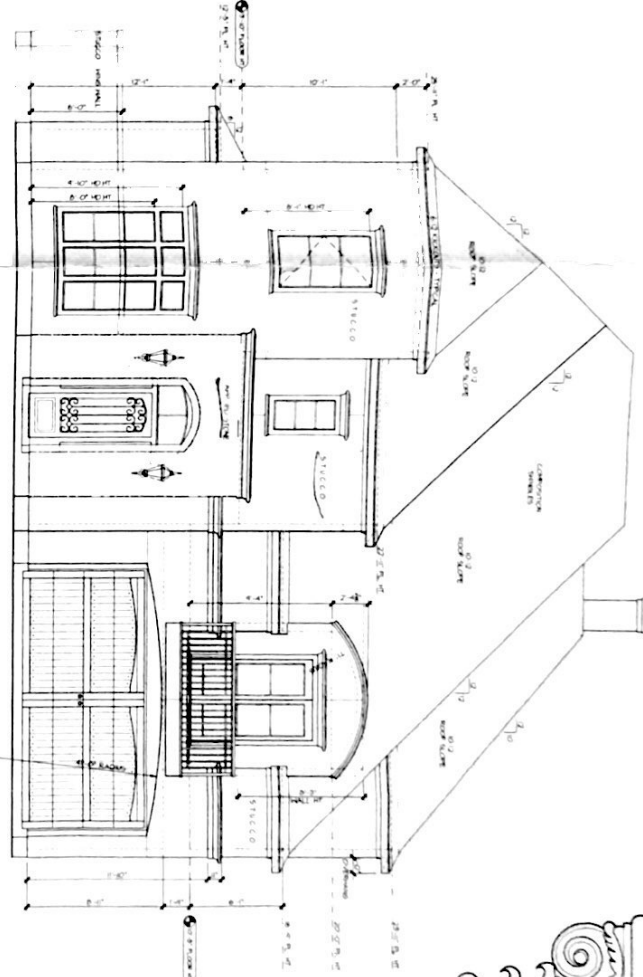
SYMBOLS	
	DOOR SWING
	WINDOW SWING
	STAIRS
	WALL
	WINDOW
	DOOR
	WALL OPENING
	WINDOW OPENING
	DOOR OPENING
	WALL OPENING WITH DOOR
	WINDOW OPENING WITH DOOR
	DOOR OPENING WITH WINDOW
	WINDOW OPENING WITH WINDOW
	WALL OPENING WITH WINDOW AND DOOR
	WINDOW OPENING WITH WINDOW AND DOOR
	DOOR OPENING WITH WINDOW AND DOOR
	WINDOW OPENING WITH WINDOW AND DOOR

COPYRIGHT 2012

ALL RIGHTS RESERVED. THIS DRAWING IS THE PROPERTY OF THE ARCHITECT AND IS TO BE USED ONLY FOR THE PROJECT AND SITE SPECIFICALLY IDENTIFIED HEREIN. NO PART OF THIS DRAWING IS TO BE REPRODUCED, COPIED, STORED IN A RETRIEVABLE SYSTEM, TRANSMITTED IN ANY FORM OR BY ANY MEANS, ELECTRONIC OR MECHANICAL, INCLUDING PHOTOCOPYING, RECORDING, OR BY ANY INFORMATION STORAGE AND RETRIEVAL SYSTEM, WITHOUT THE WRITTEN PERMISSION OF THE ARCHITECT. THE ARCHITECT'S LIABILITY IS LIMITED TO THE PROFESSIONAL DESIGN SERVICES PROVIDED HEREIN. THE ARCHITECT DOES NOT WARRANT OR REPRESENT THAT THE INFORMATION CONTAINED HEREIN IS COMPLETE, ACCURATE, OR SUFFICIENT FOR ANY OTHER PURPOSE. THE ARCHITECT'S LIABILITY IS LIMITED TO THE PROFESSIONAL DESIGN SERVICES PROVIDED HEREIN. THE ARCHITECT DOES NOT WARRANT OR REPRESENT THAT THE INFORMATION CONTAINED HEREIN IS COMPLETE, ACCURATE, OR SUFFICIENT FOR ANY OTHER PURPOSE. THE ARCHITECT'S LIABILITY IS LIMITED TO THE PROFESSIONAL DESIGN SERVICES PROVIDED HEREIN.



REAR ELEVATION  
 ROOF BALCONY 131  
 COVERED PATIO 146  
 2ND FLOOR AREA 234  
 1ST FLOOR AREA 234  
 SCALE 1/4" = 1'-0"



FRONT ELEVATION  
 FRONT PORCH 434  
 COVERED PATIO 146  
 2ND FLOOR AREA 234  
 SCALE 1/4" = 1'-0"

DINA

Division of Design & Architecture, LLC  
 1000 West Loop South, Suite 200  
 Houston, Texas 77027  
 Phone: (713) 793-1111  
 Fax: (713) 793-1112  
 Website: www.dinaarch.com

**ELEVATION NOTES**

1. FINISHES: SEE FINISH SCHEDULE AND SPECIFICATIONS.  
 2. MATERIALS: SEE MATERIAL SCHEDULE AND SPECIFICATIONS.  
 3. COORDINATION: SEE MEETING MINUTES AND COMMENTS SHEET.  
 4. ALL DIMENSIONS ARE UNLESS OTHERWISE NOTED.  
 5. ALL WORK SHALL BE IN ACCORDANCE WITH THE 2012 INTERNATIONAL RESIDENTIAL CODE AND ALL APPLICABLE CITY, COUNTY AND STATE ORDINANCES.  
 6. THE ARCHITECT IS NOT RESPONSIBLE FOR THE ACCURACY OF THE INFORMATION PROVIDED BY OTHER PROFESSIONALS.  
 7. THE ARCHITECT IS NOT RESPONSIBLE FOR THE ACCURACY OF THE INFORMATION PROVIDED BY OTHER PROFESSIONALS.  
 8. THE ARCHITECT IS NOT RESPONSIBLE FOR THE ACCURACY OF THE INFORMATION PROVIDED BY OTHER PROFESSIONALS.

**SQUARE FOOTAGES**

FLOOR	AREA	TOTAL
FIRST FLOOR	1334	
SECOND FLOOR	2464	
TOTAL INDOOR LIVING	4292	57
<b>REAR ELEVATION</b>		
GARAGE	134	
FRONT PORCH	146	
COVERED PATIO	146	
OUTDOOR LIVING	250	
TOTAL SLAB	534	97
<b>FRONT ELEVATION</b>		
BALCONIES	3246	
TOTAL COVER	46	5689

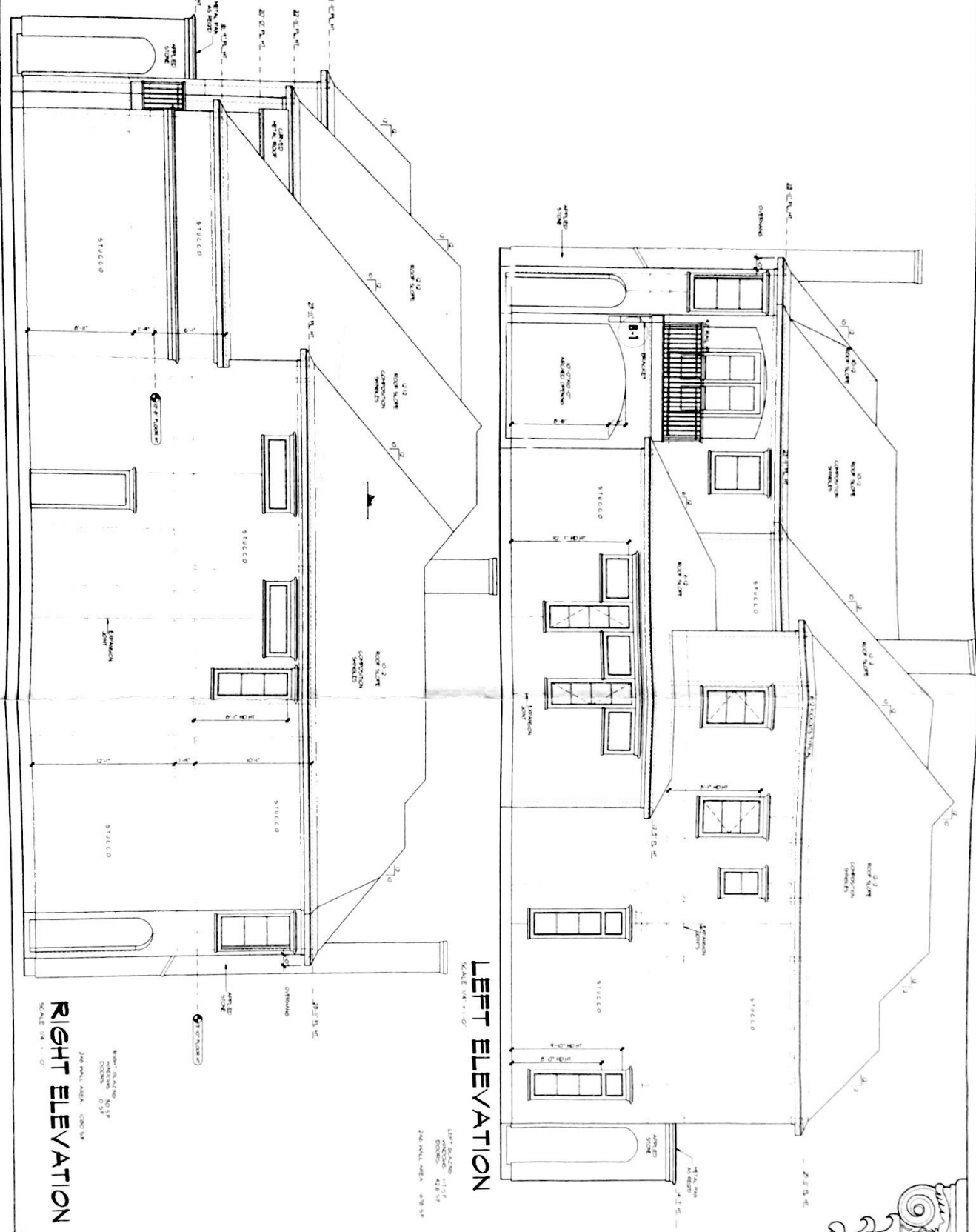
ICON  
 OAK FOREST LOT 38 BLOCK 6  
 1314 CHEMUNALE RD HOUSTON, TX 77018

E2184\VE2184-V2 5 of 12

DATE DATE 21 SEPTEMBER 2012

**COPYRIGHT 2012**

ALL LEGAL PLANS AND SPECIFICATIONS ARE THE PROPERTY OF ARCHITECTURE BY ASSOCIATES, LLC. NO PART OF THIS DOCUMENT IS TO BE REPRODUCED OR TRANSMITTED IN ANY FORM OR BY ANY MEANS, ELECTRONIC OR MECHANICAL, INCLUDING PHOTOCOPYING, RECORDING, OR BY ANY INFORMATION STORAGE AND RETRIEVAL SYSTEM, WITHOUT PERMISSION IN WRITING FROM ARCHITECTURE BY ASSOCIATES, LLC. THE USER OF THIS DOCUMENT IS TO BE RESPONSIBLE FOR OBTAINING ALL NECESSARY PERMITS AND APPROVALS FROM THE APPROPRIATE AGENCIES. THE USER OF THIS DOCUMENT IS TO BE RESPONSIBLE FOR OBTAINING ALL NECESSARY PERMITS AND APPROVALS FROM THE APPROPRIATE AGENCIES. THE USER OF THIS DOCUMENT IS TO BE RESPONSIBLE FOR OBTAINING ALL NECESSARY PERMITS AND APPROVALS FROM THE APPROPRIATE AGENCIES.



**LEFT ELEVATION**

**RIGHT ELEVATION**

SQUARE FOOTAGES	
FIRST FLOOR	1830
SECOND FLOOR	2484
TOTAL INDOOR LIVING	4282 SF
GARAGE	
TOTAL GARAGE	734
COVERED PAVING	146
OUTDOOR LIVING	350
TOTAL SLAB	534 SF
BALCONIES	
TOTAL BALCONIES	48
TOTAL COVER	5698 SF

**ICON**  
 OAK FOREST LOT 36 BLOCK 4  
 1234 CHERRYPDALE RD HOUSTON, TX 77018

**E2184/E2184-V2**  
 SHEET NO. 6 OF 12  
 DATE: 21 SEPTEMBER 2012