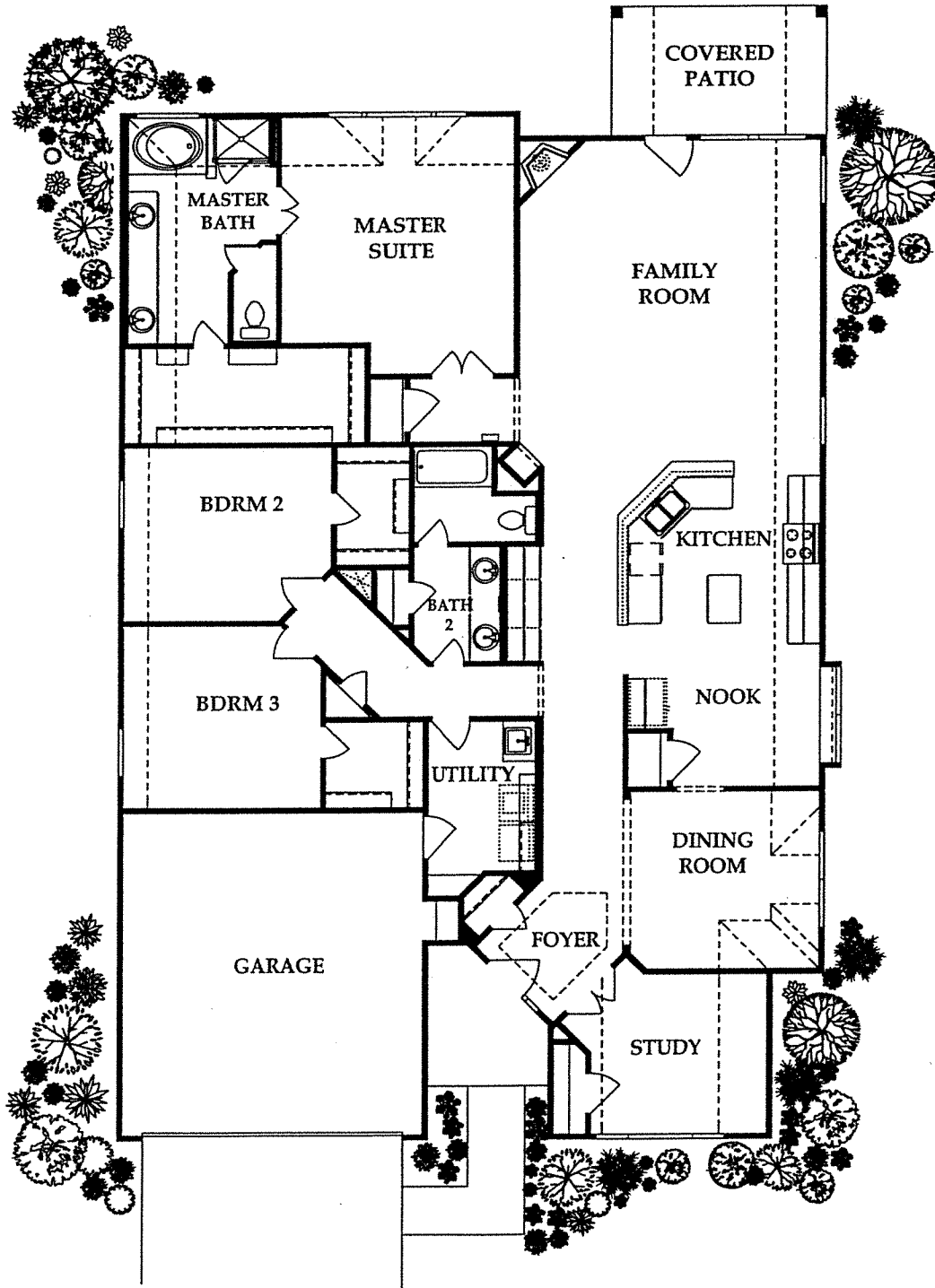




Floorplans Arbrook II

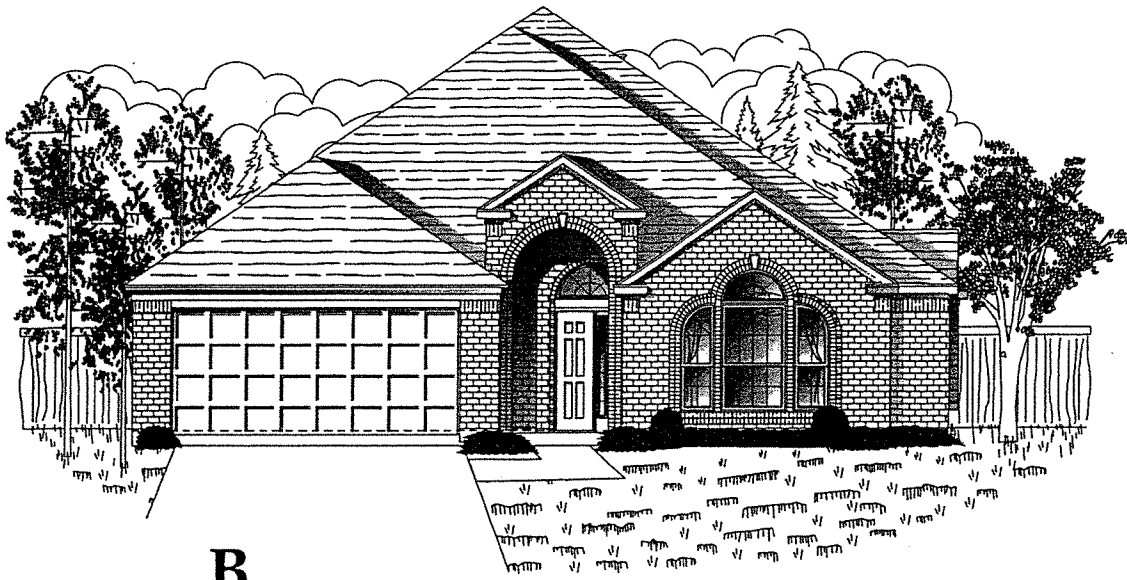


O.L.P.

Floor Plan

H1871P3236AF2D-08/25/06

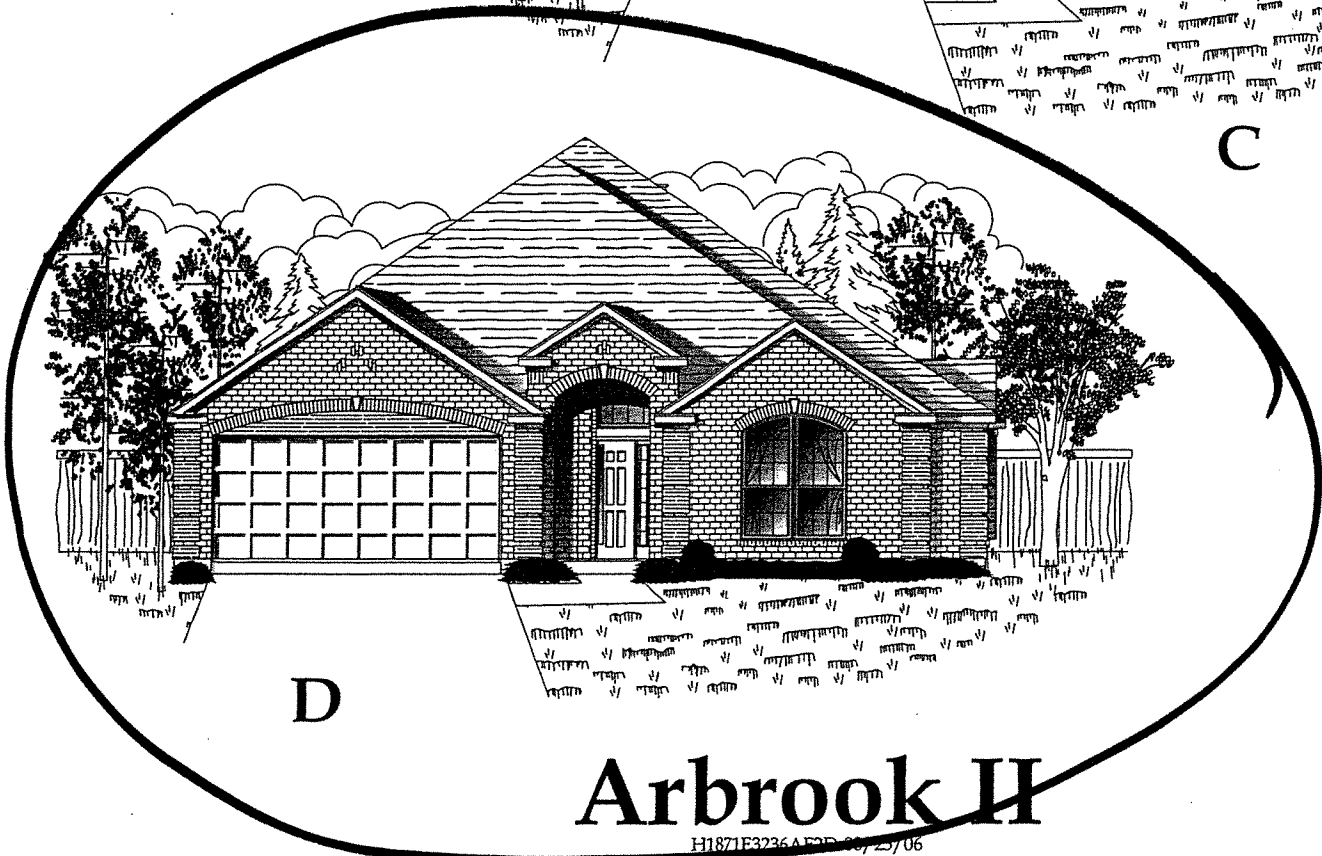




B



C



D

O.L.P.

Arbrook II

H1871E3236 A FEB 20/25/06



Included Features

Waterview Estates

PREMIER SERIES

Energy Star

- R13 Friction Batt Insulation Installed in Walls with Zero Tolerance Application
- R22 Fiberglass insulation in Sloped Ceiling
- R30 Fiberglass insulation in Attic
- Aluminum, double pane insulated LoE2 windows with screens
- 14 SEER Condenser
- 50 Gallon Energy Efficient Gas Water Heater
- Gas & electric dryer connections with outside vent
- Polyfoam Sealant around Doors, Windows, Exterior Penetrations and Foundation
- Programmable Thermostat

Exterior Features

- Four sides ACME brick on first floor
- Covered Back Patios
- Backyard six-foot cedar fence with gate
- Concrete Walkways, Driveways, and Patios
- Convenient outdoor faucets and electrical outlets
- Full Sod in Front and Side Lawn with Landscape Package
- Raised Panel Steel Overhead Garage Door with Garage Door Openers
- Six Panel insulated THERMA-TRU front door
- Full Guttering and Downspouts
- Coach Light on Garage
- SHERWIN WILLIAMS premium paint

Interior Features

- HEATILATOR Direct Vent Fireplace with Glass Enclosure, Gas Logs and Remote
- Utility Room Sink with CORIAN Countertops (per plan)
- High quality carpeting by MOHAWK with 1/2" 6 lb. carpet pad
- Exclusive SCHLAGE Chrome Lever Door Hardware
- Raised Panel Doors
- 18" Ceramic Tile in Foyer and Wet Areas
- Ceiling Fans in Family Room, Master Bedroom, and Game Room
- CAT 5 phone and RG 6 cable outlets in all bedrooms, kitchen, family room, game room, study, and garage
- Secondary Bedrooms & Study Blocked & Pre-wired for Ceiling Fan
- Recessed Can Lights
- Rounded Sheetrock Corners
- Deluxe SEAGULL Lighting Package
- Rocker Switches
- SHERWIN WILLIAMS washable interior paint

Kitchen Features

- 18" Ceramic Tile in Kitchen and Breakfast Nook
- Ceramic Tile Backsplash on a diagonal
- GENERAL ELECTRIC White or Black Appliance Package includes GE Profile Self Cleaning Gas Range, Vented Microwave Oven, and Energy Efficient Dishwasher
- Pre-installed ice maker plumbing
- Kitchen Sink includes MOEN Single Handle Faucet with Hand Spray and Heavy Duty Garbage Disposal
- CORIAN Countertops with Integrated Sink
- 42" Maple Cabinets
- Recessed Can Lights

Bath Features

- 18" Ceramic Tile Flooring in all Bathrooms
- Separate Glass Enclosed Shower and KOHLER Garden Tub in Master Bathroom
- Ceramic Tile Shower Surround in Master Bath
- Dual Vanities in Master Bath with Cultured Marble Countertops
- Cultured Marble Shower Walls in Master Bath
- Elongated KOHLER/STERLING Toilets
- KOHLER/STERLING Pedestal Sink in Powder Room
- Polished Chrome MOEN Fixtures

Security Features

- Double Locks on all Windows
- Front and Rear Door Lighting
- Security System with Keypad and Motion Detector
- Single cylinder deadbolt lock on front door
- Smoke Detectors with Battery Backup throughout Home

Quality Construction Features

- 150 Amp Service with Copper Wiring
- Dimensional Shingles on Roof
- ACME American Made Clay Brick
- Divided lite Windows on Front of Home
- Engineered Foundations
- Engineered Floor Systems
- Tongue-in-groove Subflooring nailed & glued - OSB
- HOME TEAM Pest Defense System and Termite Pretreatment
- ZURN PEX Plumbing

Available Options

- Ceramic tile flooring in dining and family room
- Cherry Cabinets
- Full Sprinkler System
- Backyard Sod
- Stainless Steel GE Appliance Package
- G.E. Refrigerator
- G.E. Washer & Gas Dryer

Pulte Homes Protection Plan

- Ten-Year Limited Warranty Protection for Your Home
- Five-Year Leak Protection & Water Penetration Warranty
- Two-Year Full Mechanical Systems Warranty
- Manufacturers' Warranties Throughout Your Home

O.L.P.

*Included Features subject to revision without notice
Ask Your Sales Professional about Available Options and Upgrades.

*PULTE HOMES PROTECTION PLAN
The exclusive ten-year limited warranty protection for your home

*PULTE HOMES CUSTOMER RELATIONS
A team of representatives ready to handle your warranty requests

