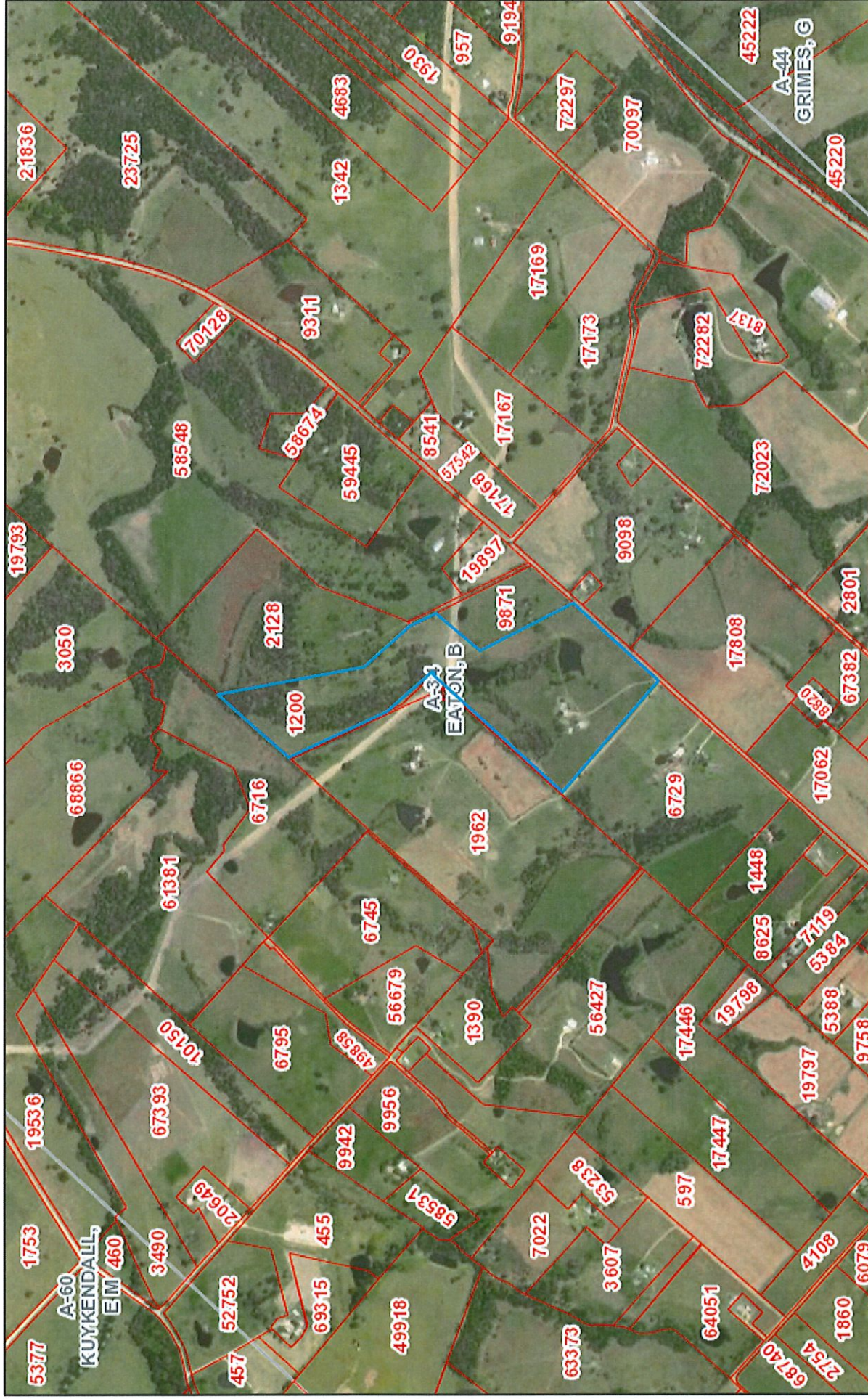


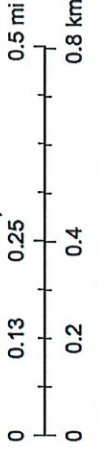
# 3649 W Ueckert Road



April 15, 2019

- Abstracts
- Parcels

1:15,648



Source: Esri, DigitalGlobe, GeoEye, Earthstar Geographics, CNES/Airbus DS, USDA, USGS, AeroGRID, IGN, and the GIS User Community  
Austin County Appraisal District; BIS Consulting - www.bisconsultants.com  
This product and relative contents are the property of the respective governmental entity and BIS Consultants. Use is restricted for official purposes.