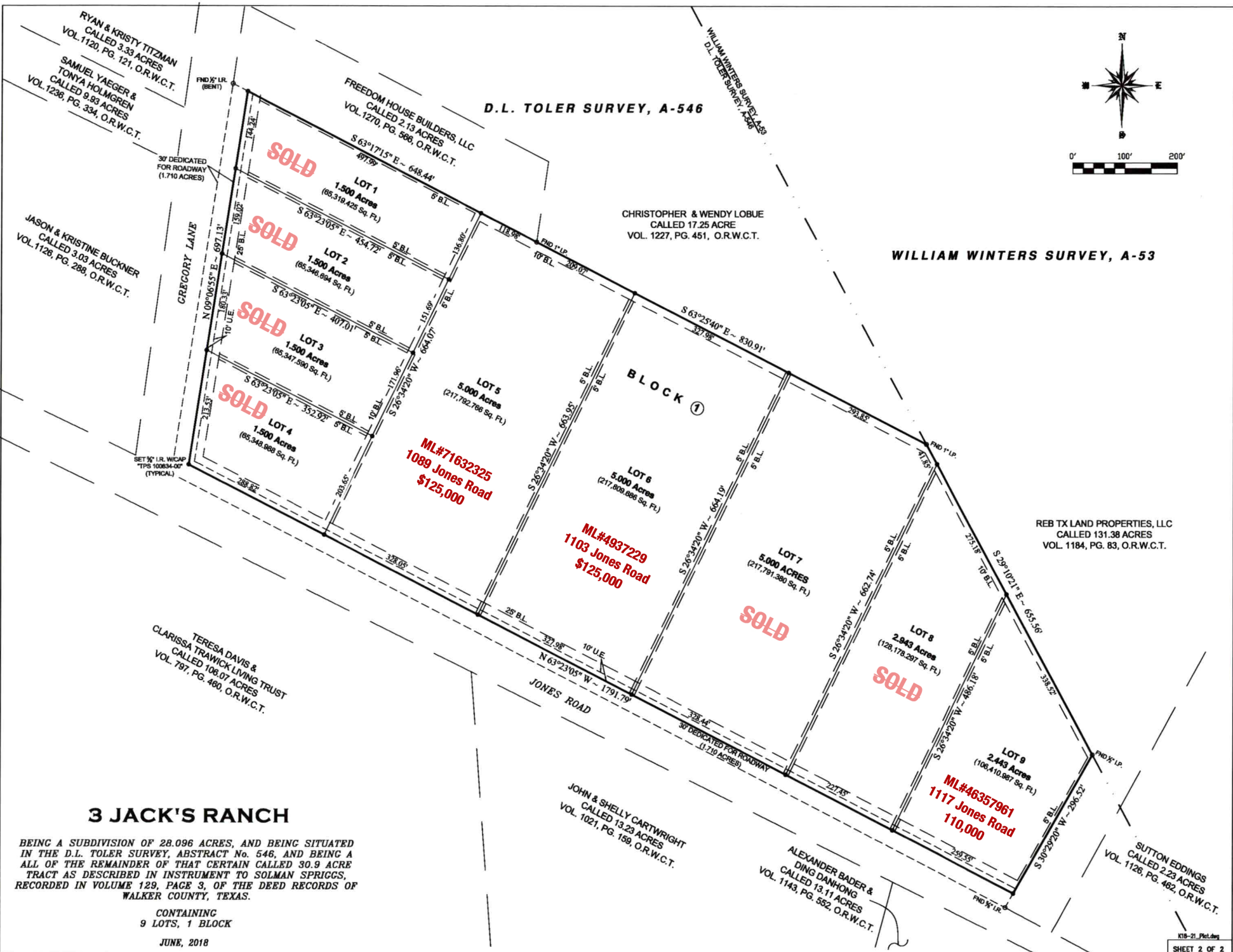


D.L. TOLER SURVEY, A-546

WILLIAM WINTERS SURVEY, A-53



RYAN & KRISTY TITZMAN
CALLED 3.33 ACRES
VOL. 1120, PG. 121, O.R.W.C.T.

SAMUEL YAEGER &
TONYA HOLMGREN
CALLED 9.83 ACRES
VOL. 1238, PG. 334, O.R.W.C.T.

JASON & KRISTINE BUCKNER
CALLED 3.03 ACRES
VOL. 1128, PG. 288, O.R.W.C.T.

30' DEDICATED
FOR ROADWAY
(1.710 ACRES)

GREGORY LANE

SET #1 L.R. WICAP
TPS 100834-00
(TYPICAL)

TERESA DAVIS &
CLARISSA TRAWICK LIVING TRUST
CALLED 106.07 ACRES
VOL. 797, PG. 460, O.R.W.C.T.

3 JACK'S RANCH

BEING A SUBDIVISION OF 28.096 ACRES, AND BEING SITUATED
IN THE D.L. TOLER SURVEY, ABSTRACT No. 546, AND BEING A
ALL OF THE REMAINDER OF THAT CERTAIN CALLED 30.9 ACRE
TRACT AS DESCRIBED IN INSTRUMENT TO SOLMAN SPRIGGS,
RECORDED IN VOLUME 129, PAGE 3, OF THE DEED RECORDS OF
WALKER COUNTY, TEXAS.

CONTAINING
9 LOTS, 1 BLOCK

JUNE, 2018

CHRISTOPHER & WENDY LOBUE
CALLED 17.25 ACRE
VOL. 1227, PG. 451, O.R.W.C.T.

REB TX LAND PROPERTIES, LLC
CALLED 131.38 ACRES
VOL. 1184, PG. 83, O.R.W.C.T.

JOHN & SHELLY CARTWRIGHT
CALLED 13.23 ACRES
VOL. 1021, PG. 159, O.R.W.C.T.

ALEXANDER BADER &
DING DANHONG
CALLED 13.11 ACRES
VOL. 1143, PG. 552, O.R.W.C.T.

SUTTON EDDINGS
CALLED 2.23 ACRES
VOL. 1128, PG. 462, O.R.W.C.T.