

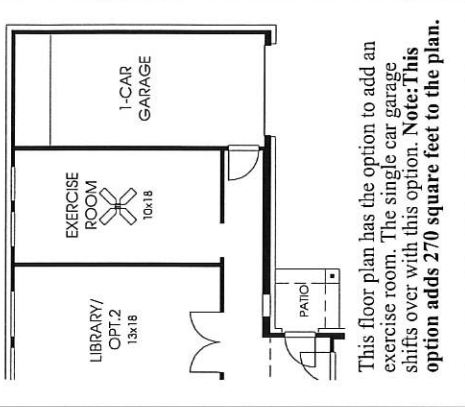
DESIGNS

Plan 5219

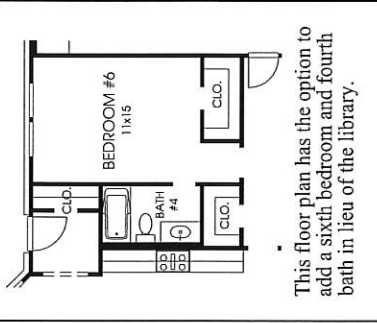
This home contains approximately 5,219 square feet and includes five bedrooms and three and a half baths.



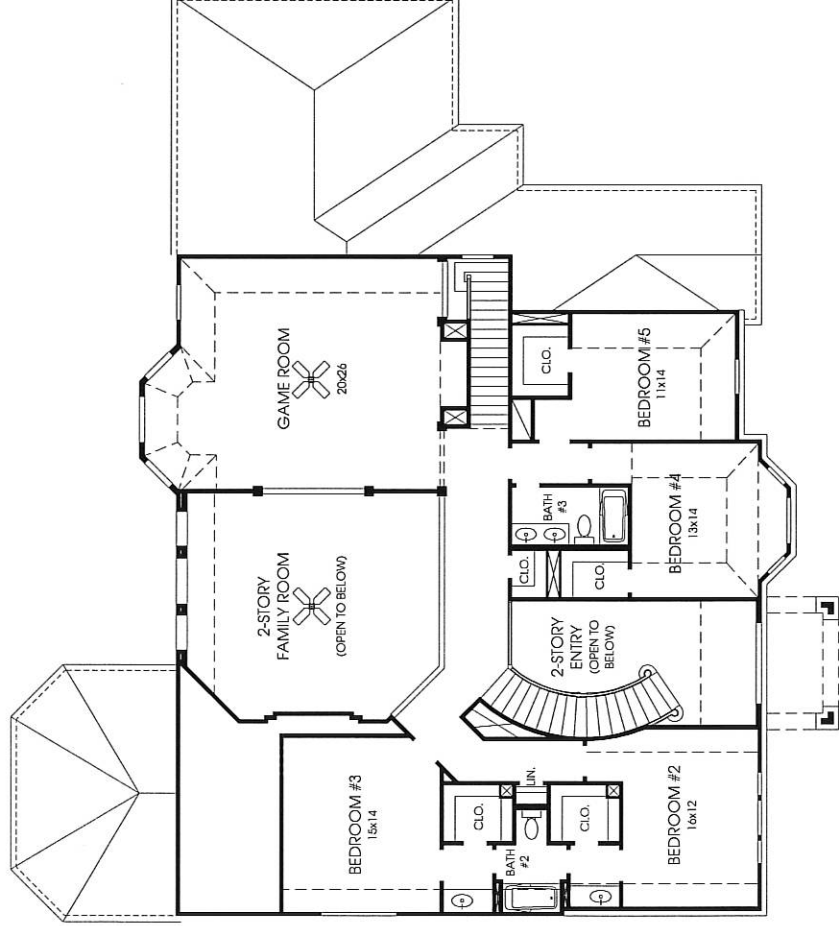
OPTION 1



OPTION 2



Note: The options shown on this brochure are available at an additional cost.

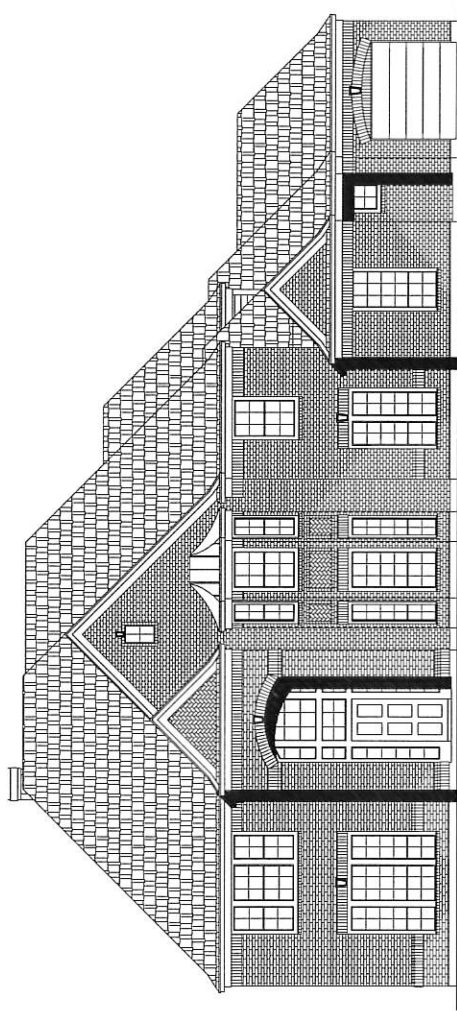


This floor plan has a 10-foot plate on the first floor.

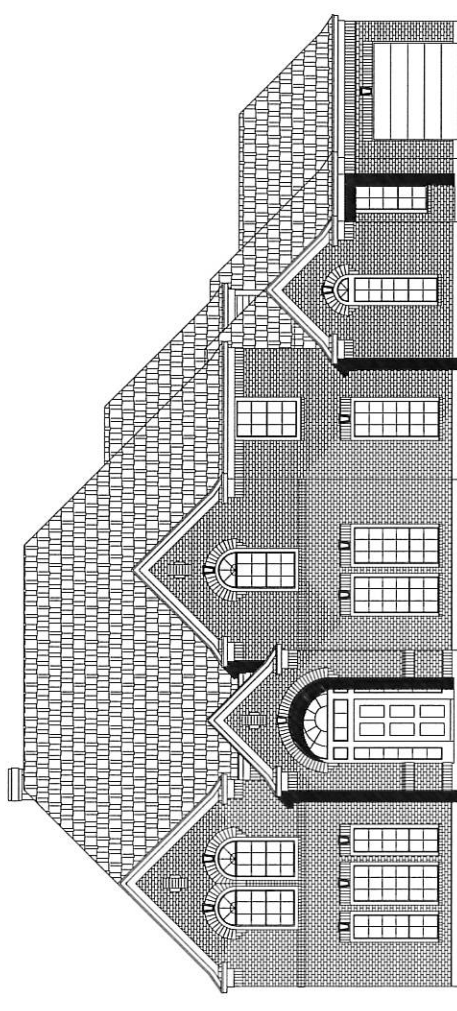
Not included: inside keyed deadbolt locks, refrigerators, furnishings, drapery, plants, decor items and all other personal property being used in model homes. Builder reserves the right to make changes in the plans and specifications, and to substitute material of similar quality. Room dimensions indicate approximate inside area.
Case# 08000000000000000000000000000000
12/04/2007 - Perry Homes
(P)

PERRY HOMES

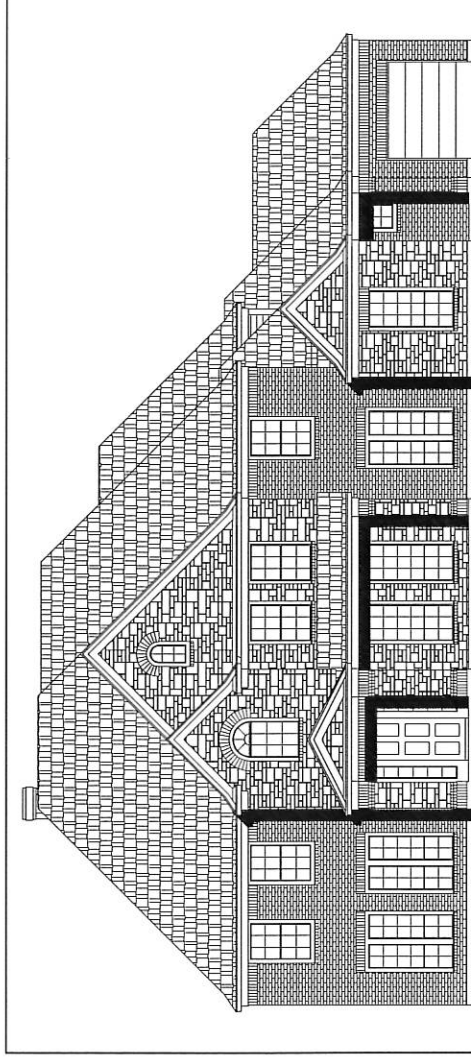




PLAN 5219 E-3



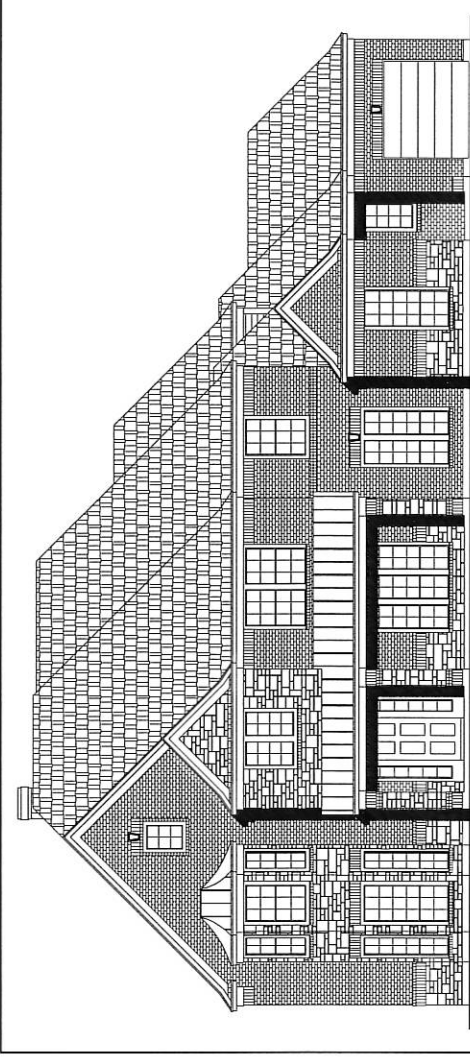
PLAN 5219 E-4



PLAN 5219 E-93

OPTIONAL ELEVATION

Note: This elevation adds 62 square feet to the floor plan.



PLAN 5219 E-94

OPTIONAL ELEVATION

Note: This elevation adds 16 square feet to the floor plan.