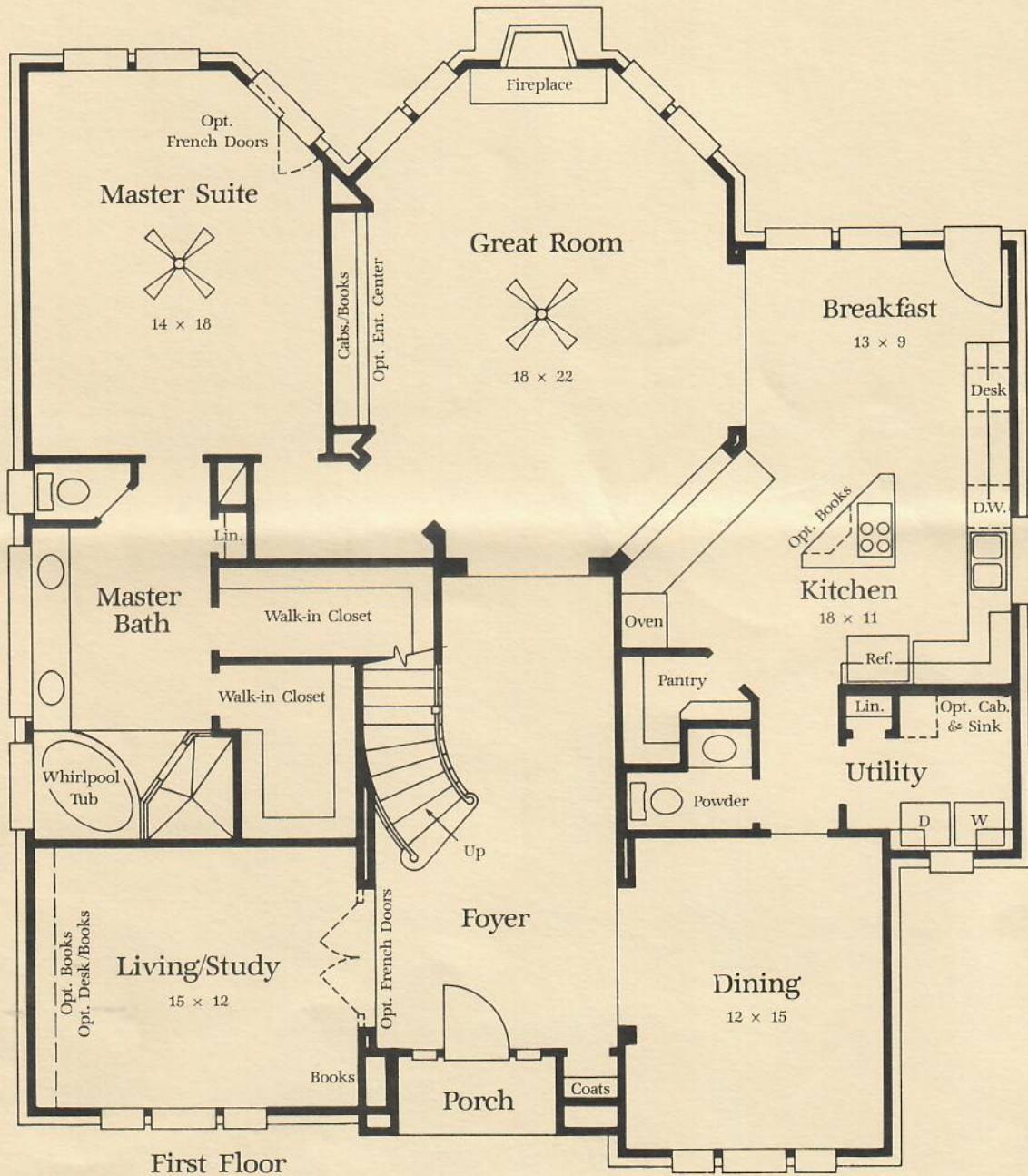


# LISBON

PLAN 377 •

- Dramatic foyer with curved staircase and two-story vestibule.
- Unique octagonal-shaped family room with built-in entertainment center and innovative back-vent fireplace surrounded by windows.
- Spacious kitchen opens to family room and includes large island with cook-top, desk with built-in bookshelves and walk-in pantry.
- Formal living room can easily be converted to a study with French doors and bookshelves.
- Comfortable master suite with 10-foot ceiling and optional French doors.
- Sumptuous master bath with his and hers walk-in closets, corner tub, transom windows and make-up desk.



First Floor



Window placement, roof line and porches may vary by elevation. Square footage and room dimensions are approximate. Variances in square footage may occur in different elevations or when different exterior materials are used. Plans, specifications and special features are subject to change without notice.