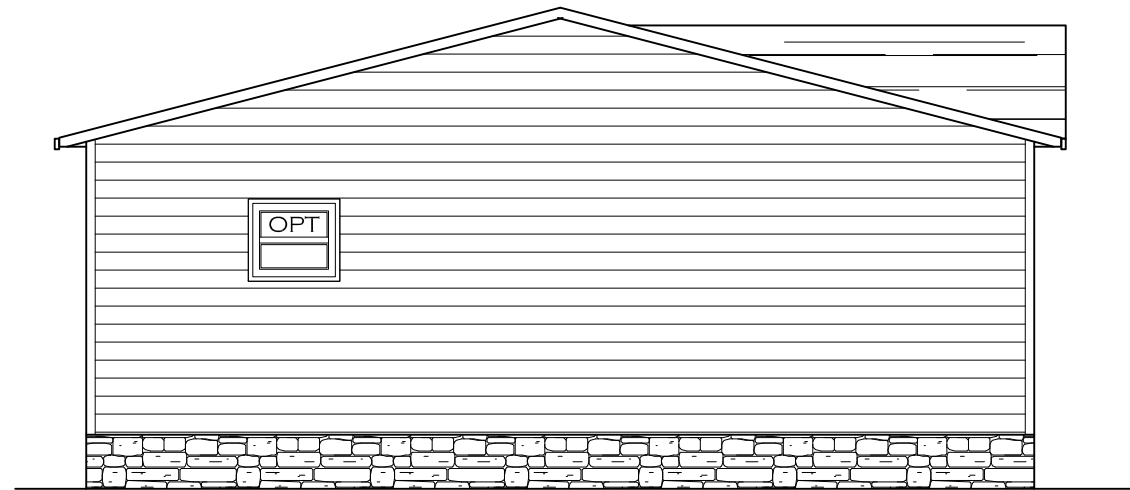
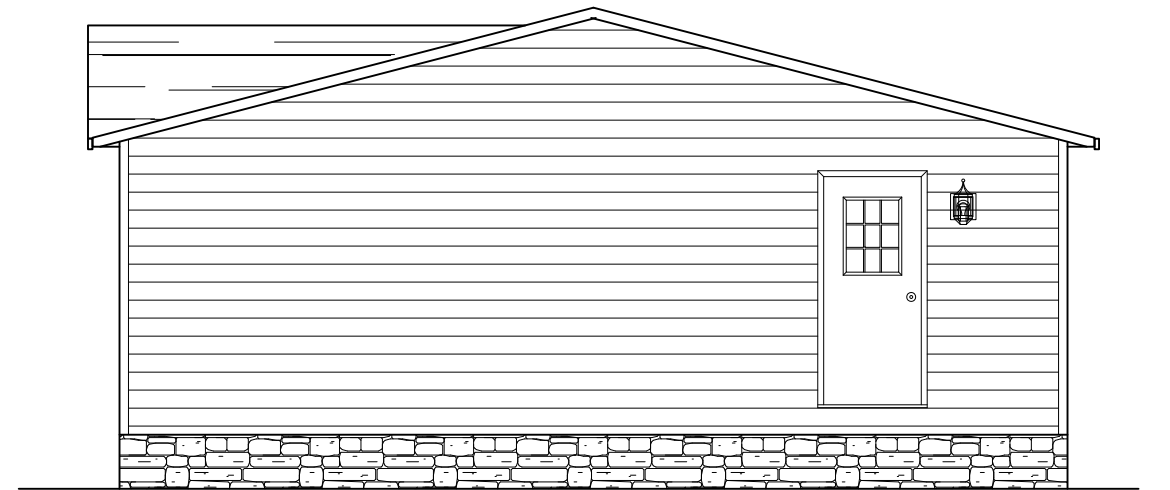


REAR ELEVATION



LEFT ELEVATION



RIGHT ELEVATION



FRONT ELEVATION

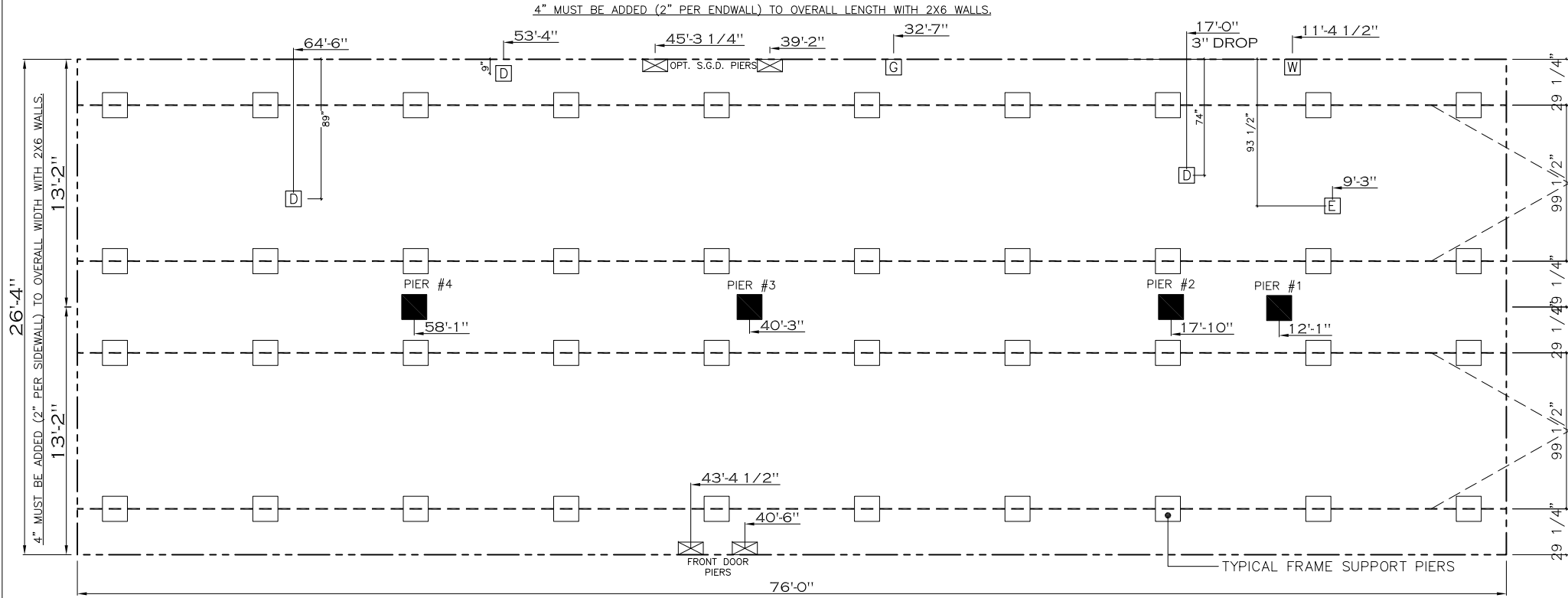
option
STUD

2001 SQ.FT. (STD PLAN "CONDITIONED")	
N/A SQ.FT. (W/OPT. PORCH/RECESS "CONDITIONED")	
CMH MANUFACTURING	Model #: 5LT28764A Date: 05/14
Product Designer: JDC	Scale: NTS Drawing #: 38M139
28 X 76 SOLUTION	
ELEVATION	

MARRIAGEWALL COLUMN SUPPORT LOADS AND LOCATIONS

20 lb ROOF LOAD SIDEWALL OPENING PIER LOAD 28' BOX WIDTH	SIDEWALL OPENING (FT)					
	REQUIRED PIER LOAD (LBS)					
	3	4	5	6	8	10
	1162	1315	1467	1620	1925	2230

*FOR 30 lb & 40 lb ROOF LOAD REFER TO TABLES 7b & 7c IN THE INSTALLATION MANUAL.



GENERAL NOTES:

1. PIER LOADS SHOWN ARE TO BE USED TO SIZE THE FOOTINGS BELOW THE MARRIAGEWALL FOR COLUMN SUPPORT PIERS. REFER TO TABLES 6b AND 6c IN THE INSTALLATION MANUAL FOR LOAD ON FRAME PIER FOOTINGS FOR HOMES THAT DO NOT REQUIRE PERIMETER BLOCKING. REFER TO TABLES 7b AND 7c IN THE INSTALLATION MANUAL FOR LOAD ON FRAME PIER FOOTINGS THAT REQUIRE PERIMETER BLOCKING. REFER TO TABLES 10 AND 10a TO DETERMINE FOOTING SIZE FOR ALL PIERS.
2. REFER TO TABLE 9 FOR PIER CONFIGURATION AND MAXIMUM ALLOWABLE HEIGHTS. CROSS REFERENCE THE PIER HEIGHT WITH THE MAXIMUM ALLOWABLE FLOOR HEIGHT LISTED IN THE FRAME TIEDOWN CHARTS (TABLE 18, 19, AND 20).
3. FLOOR WIDTH SHOWN IS FOR STANDARD PRODUCT ONLY. CONTACT THE MFG PLANT FOR SPECIFICATIONS OF OPTIONS ORDERED.
4. SERVICE DROP LOCATIONS IDENTIFIED ARE APPROXIMATE.
5. THE MAXIMUM SPACING FOR 8" I-BEAMS IS 8 FEET, 10" & 12" I-BEAMS ARE 10 FEET.

PIER LEGEND	
□	= SUPPORT UNDER MATING OPENING
■	= SUPPORT AT MATING COLUMN
⊠	= SUPPORT UNDER MATING WALL
◼	= PIER PORCH/RECESSED ENTRY
□	= PIER MAIN BEAM
⊞	= PIER PERIMETER

SERVICE DROP LEGEND	
E	= ELECTRICAL DROP
W	= WATER INLET
D	= DWV PLUMBING DROP
G	= GAS INLET

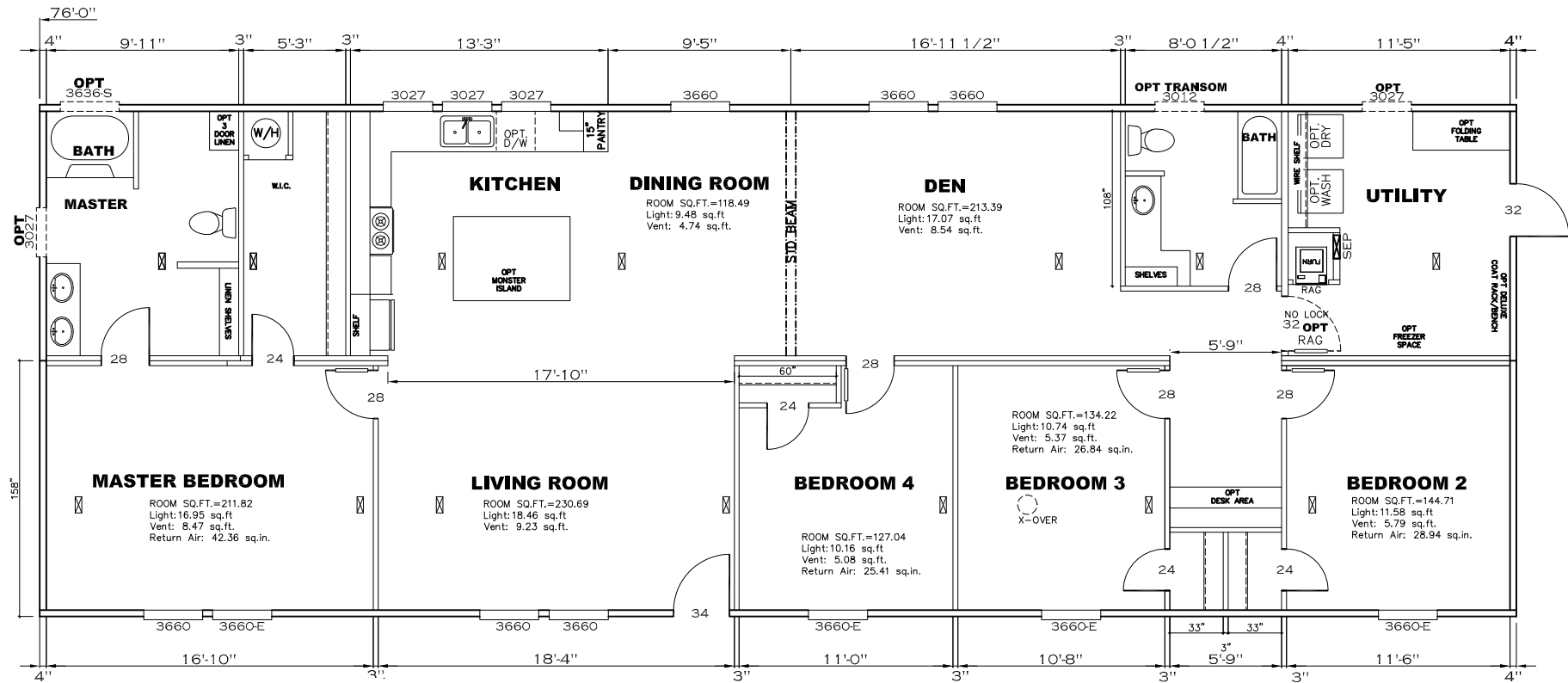
20 psf Roof Live Load			30 psf Roof Live Load			40 psf Roof Live Load		
Marriage Line Column Locations			Marriage Line Column Locations			Marriage Line Column Locations		
	Distance from Hitch	Pier Load (lbs)		Distance from Hitch	Pier Load (lbs)		Distance from Hitch	Pier Load (lbs)
1	12.083	1536	1	12.083	2968	1	12.083	3609
2	17.833	1536	2	17.833	2968	2	17.833	3609
3	40.25	3922	3	40.25	6149	3	40.25	7587
4	58.083	3922	4	58.083	6149	4	58.083	7587

2001 SQ.FT. (STD PLAN "CONDITIONED")
 N/A SQ.FT. (W/OPT. PORCH/RECESS "CONDITIONED")

CMH MANUFACTURING	Model #: SLT28764A Date: 8/5/14 Scale: NTS	Drawing #: 38M139
Product Designer: JDC		28 X 76 SOLUTION
PIER LOADS		2/ REVISION ECR-241479 10/7/15 JDC

3012 3012 3012
OPTION TRANSOM ABOVE STD KITCHEN WINDOWS

← **OPT S.G.D.** →



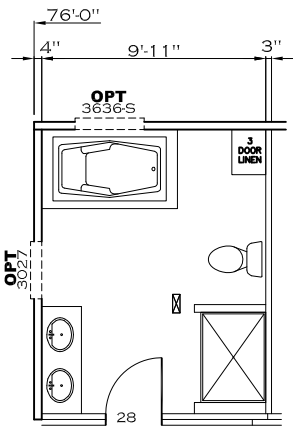
FP-28-4406

APPROVED **HWG** **APPROVED**

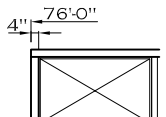
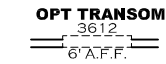
REVISED
 OCT 9 2015

Federal Manufactured
 Home Construction
 And Safety Standards

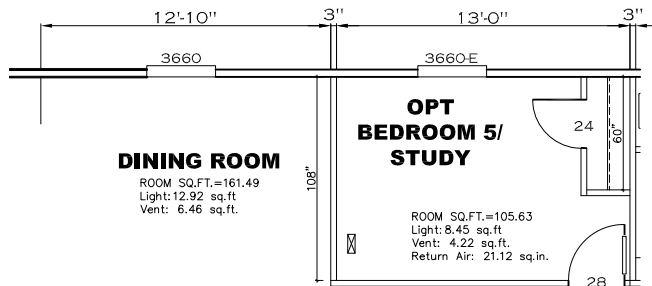
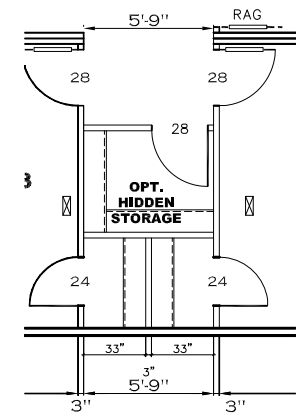
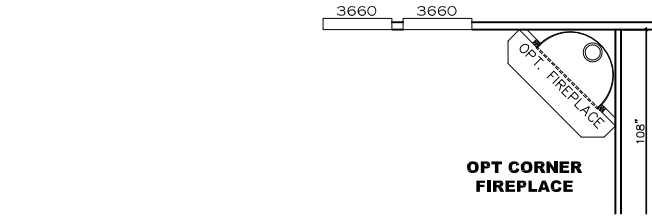
2001 SQ.FT. (STD PLAN "CONDITIONED")		N/A SQ.FT. (W/OPT. PORCH/RECESS "CONDITIONED")	
CMH MANUFACTURING	Model #: SLT28764A Date: 8/5/14	Drawing #: 38M139 Scale: NTS	
Product Designer: JDC		28 X 76 SOLUTION	
FLOOR PLAN		7 REVISION ECR-241479 10/7/15 JDC	



OPT LUXURY BATH

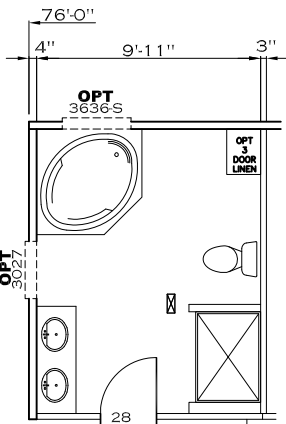
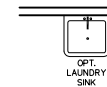
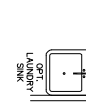


OPT 60" SHOWER

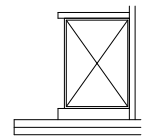


DINING ROOM

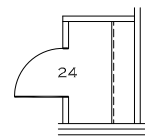
ROOM SQ.FT.=161.49
Light: 12.92 sq.ft.
Vent: 6.46 sq.ft.



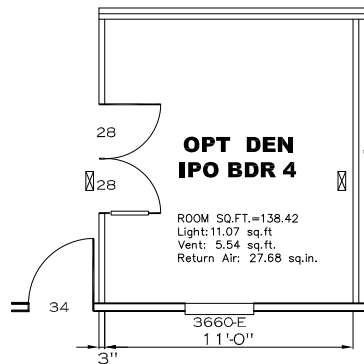
OPT GLAMOUR BATH



OPT 48" SHOWER



OPT CLOSET REPLACES SHELVES STD BATH



OPT DEN IPO BDR 4

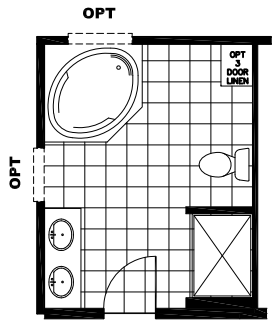
ROOM SQ.FT.=138.42
Light: 11.07 sq.ft.
Vent: 5.54 sq.ft.
Return Air: 27.68 sq.in.

APPROVED **HWG** **APPROVED**
REVISED
OCT 9 2015
Federal Manufactured Home Construction And Safety Standards

FP-28-4406

2001 SQ.FT. (STD PLAN "CONDITIONED")
N/A SQ.FT. (W/OPT. PORCH/RECESS "CONDITIONED")

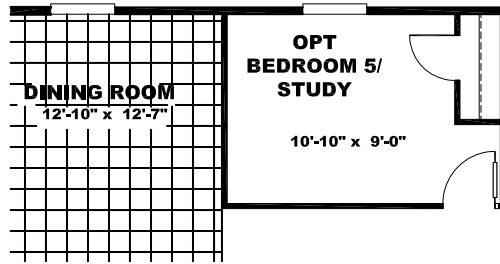
CMH MANUFACTURING Product Designer: JDC	Model #: SLT28764A Date: 8/5/14	Drawing #: 38M139 Scale: NTS
	28 X 76 SOLUTION	
FLOOR PLAN OPTIONS		
REVISION ECR-228381 9/22/15 JDC		



OPT GLAMOUR BATH

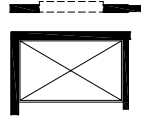


OPT CLOSET REPLACES SHELVES STD BATH

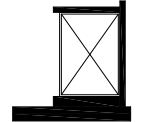


OPT 54" SHOWER

OPT TRANSOM



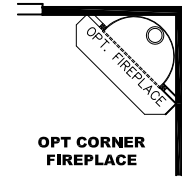
OPT 60" SHOWER



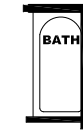
OPT 48" SHOWER



OPTION TRANSOM ABOVE STD KITCHEN WINDOWS



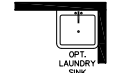
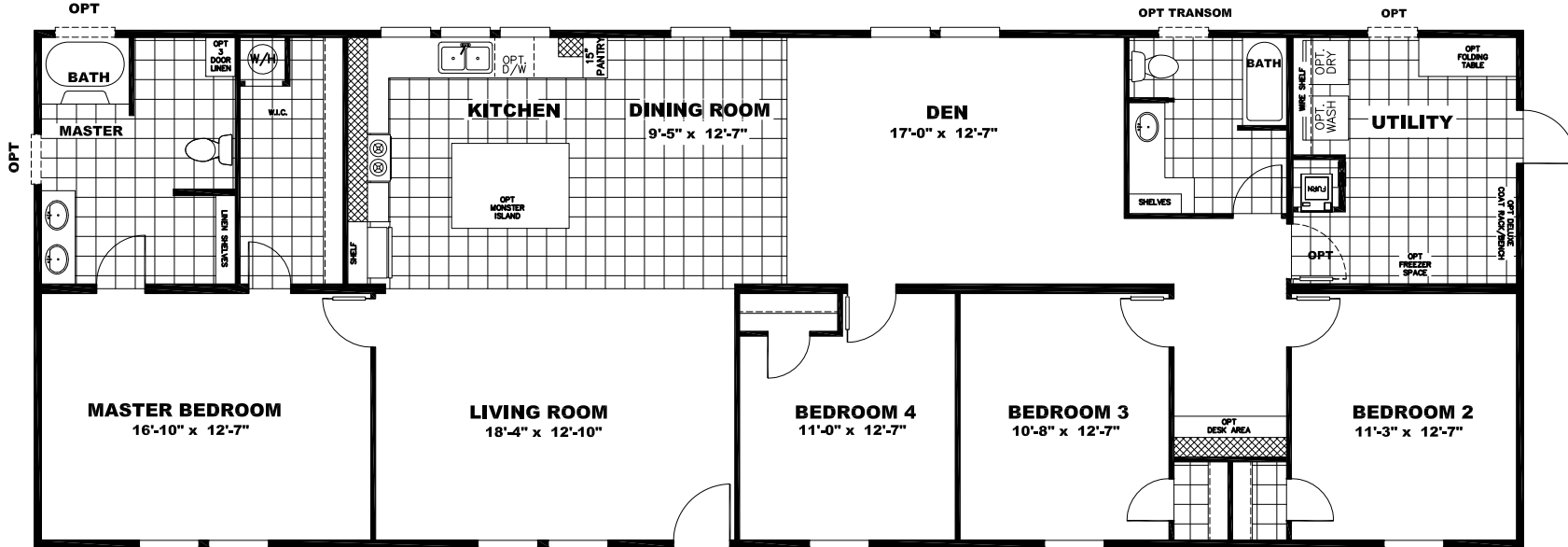
OPT CORNER FIREPLACE



OPT 60" TUB



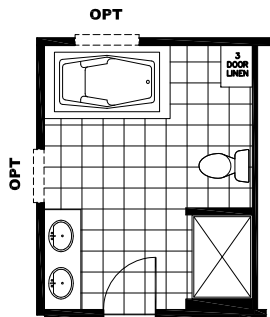
OPT S.G.D.



OPT UTILITY SINK IPO FOLDING TABLE



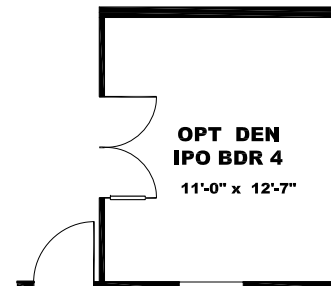
OPT UTILITY SINK



OPT LUXURY BATH



OPT LINO ENTRY

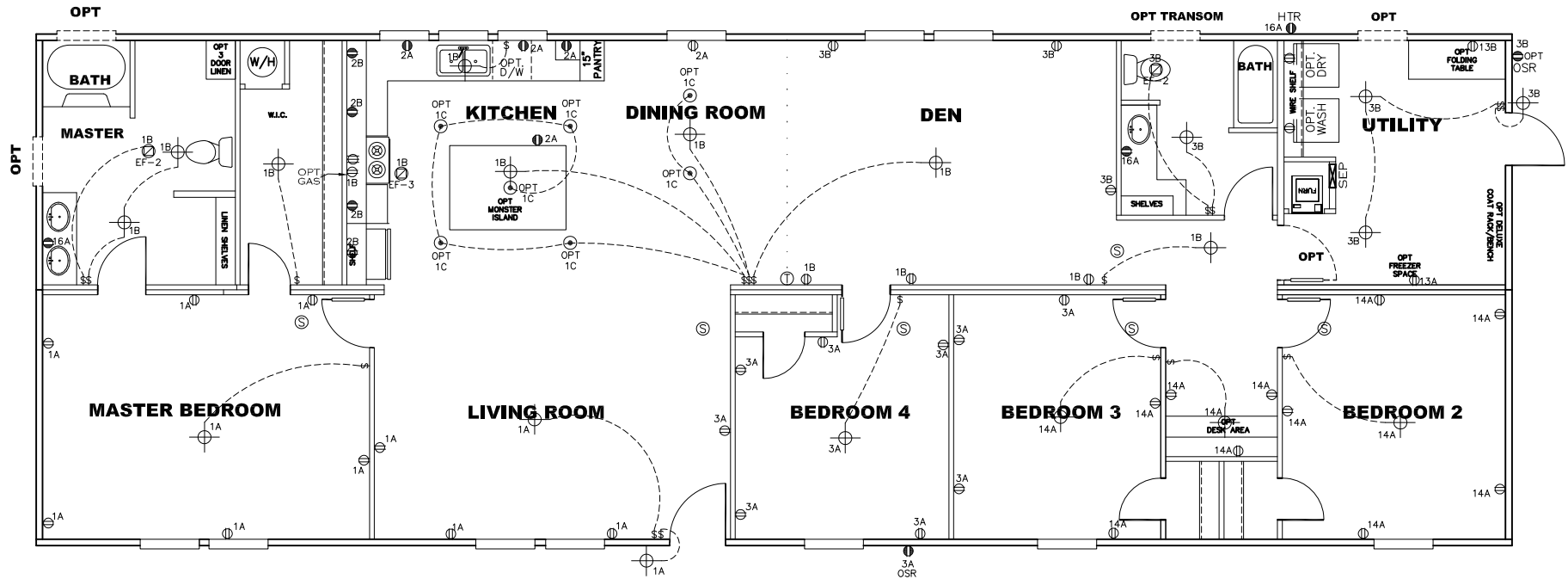


OPT DEN IPO BDR 4
11'-0" x 12'-7"

2001 SQ.FT.
Model #: SLT28764A
SOLUTION
Drawing #:
38M139



APPROVED **HWG** **APPROVED**
 REVISED
 OCT 9 2015
 Federal Manufactured
 Home Construction
 And Safety Standards



NOTES:

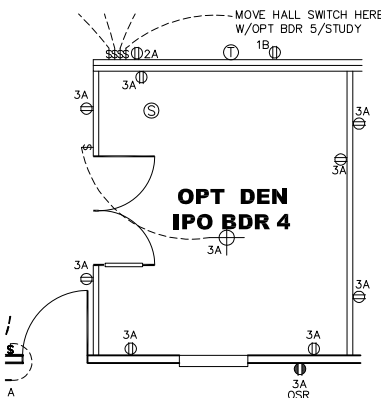
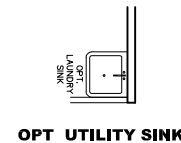
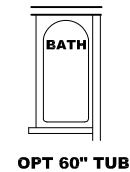
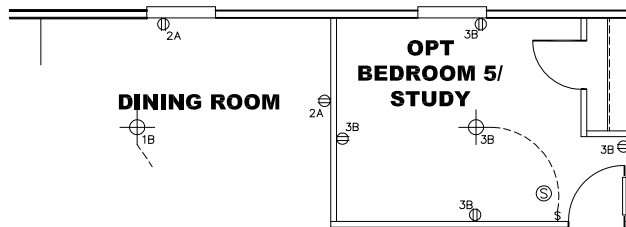
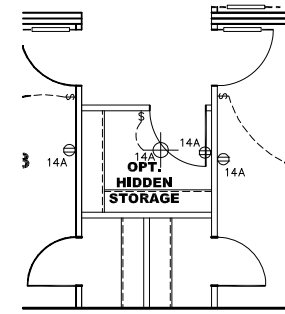
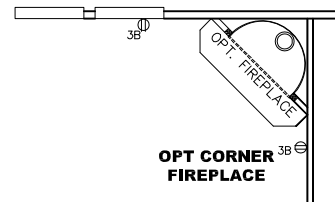
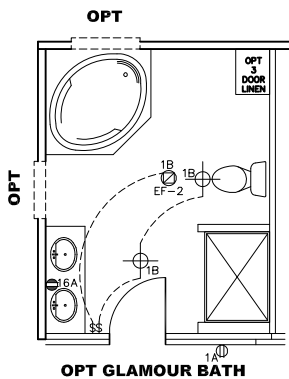
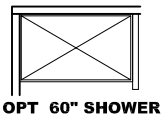
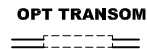
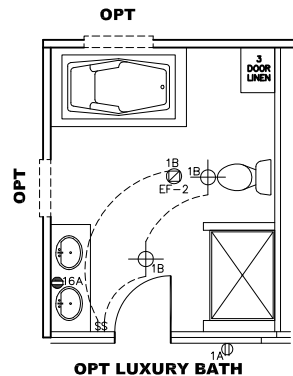
1. ALL CIRCUITS SHOWN ARE FOR REFERENCE AND MAY BE CHANGED BASED ON OPTIONAL COMPONENTS INSTALLED IN THE HOME.
2. REFER TO EL SECTION OF THE DAPIA FOR SYMBOL CHART.
3. EITHER LIGHT OR RECEPTACLE MUST CONNECT TO SWITCH.
4. EF-1= 50 CFM EXHAUST FAN REQUIRED FOR THERMAL ZONE III THERMAL ZONES I & II MAY USE FAN OR WINDOW W/1.5 SQ. FT. OPENABLE GLASS.
5. EF-2= 50 CFM EXHAUST FAN REQUIRED THERMAL ZONE I, II, AND III.
6. EF-3= 100 CFM RANGE EXHAUST FAN, SWITCH AT HOOD.
7. EF-4= WHOLE HOUSE VENTILATION PER REQUIREMENTS IN S-HV-10 & 10A OR M-HV-11 & 11A OF DAPIA.
8. REFER TO EL SECTION OF THE DAPIA OR THE MFG. INSTALLATION INSTRUCTIONS FOR PROPER WIRE SIZE AND BREAKER SIZE FOR SPECIFIC APPLIANCE AND MODEL BEING INSTALLED.
9. ALL SMOKE ALARMS TO BE LOCATED ON THE CEILING.
10. DIMENSIONS SHOWN ON PRINT ARE APPROXIMATE AND TO BE USED ONLY AS A GUIDELINE.

CIRCUIT	CIRCUIT #	WIRE	BREAKER	CIRCUIT	CIRCUIT #	WIRE	BREAKER	CIRCUIT	CIRCUIT #	WIRE	BREAKER
LIGHT/RECEP	1A,1B,1C,3A,3B,14A	14-2	15-SP	WATER HEATER	4A,6B	SEE NOTE #8		BATHS/HTR	16A	12-2	20-SP
KITCHEN/DINING	2A,2B	12-2	20-SP	RANGE	5B,7A	SEE NOTE #8		OPT G/DISP	9B		SEE NOTE #8
WASHER	12A	12-2	20-SP	FURNACE	6A,8A,B,10A,B	SEE NOTE #8		OPT SPA/WP/JAC	11A,B		SEE NOTE #8
DRYER	5A,7B	SEE NOTE #8		OPT D/WASH	9A	SEE NOTE #8		FREEZER	1,3A		SEE NOTE #8
				SMOKE ALARM	4B	SEE NOTE #8					

FP-28-4406

2001 SQ.FT. (STD PLAN "CONDITIONED")
 N/A SQ.FT. (W/OPT. PORCH/RECESS "CONDITIONED")

CMH MANUFACTURING	Model #: SLT28764A	Drawing #:
	Date: 8/5/14	Scale: NTS
Product Designer: JDC		38M139
28 X 76 SOLUTION		
ELECTRICAL PLAN-06		8 REVISION ECR-241479 10/7/15 JDC



APPROVED **HWG** **APPROVED**

REVISED
OCT 9 2015

Federal Manufactured
Home Construction
And Safety Standards

SEE EL PAGE FOR ALL NOTES AND LEGEND

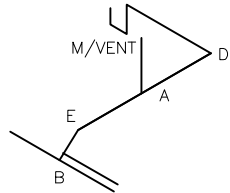
FP-28-4406

2001 SQ.FT. (STD PLAN "CONDITIONED")		N/A SQ.FT. (W/OPT. PORCH/RECESS "CONDITIONED")	
CMH MANUFACTURING	Model #: SLT28764A	Drawing #: 38M139	
Product Designer: JDC	Date: 05/14	Scale: NTS	
ELEC. PAGE OPTIONS-06		28 X 76 SOLUTION	
		REVISION ECR-228381 9/22/15 JDC	

NOTE:
DASHED LINES INDICATE HOT WATER
SOLID LINES INDICATE COLD WATER

— = 3/4"
— = 1/2"

OPT DROP-IN TUBS OR SHOWER

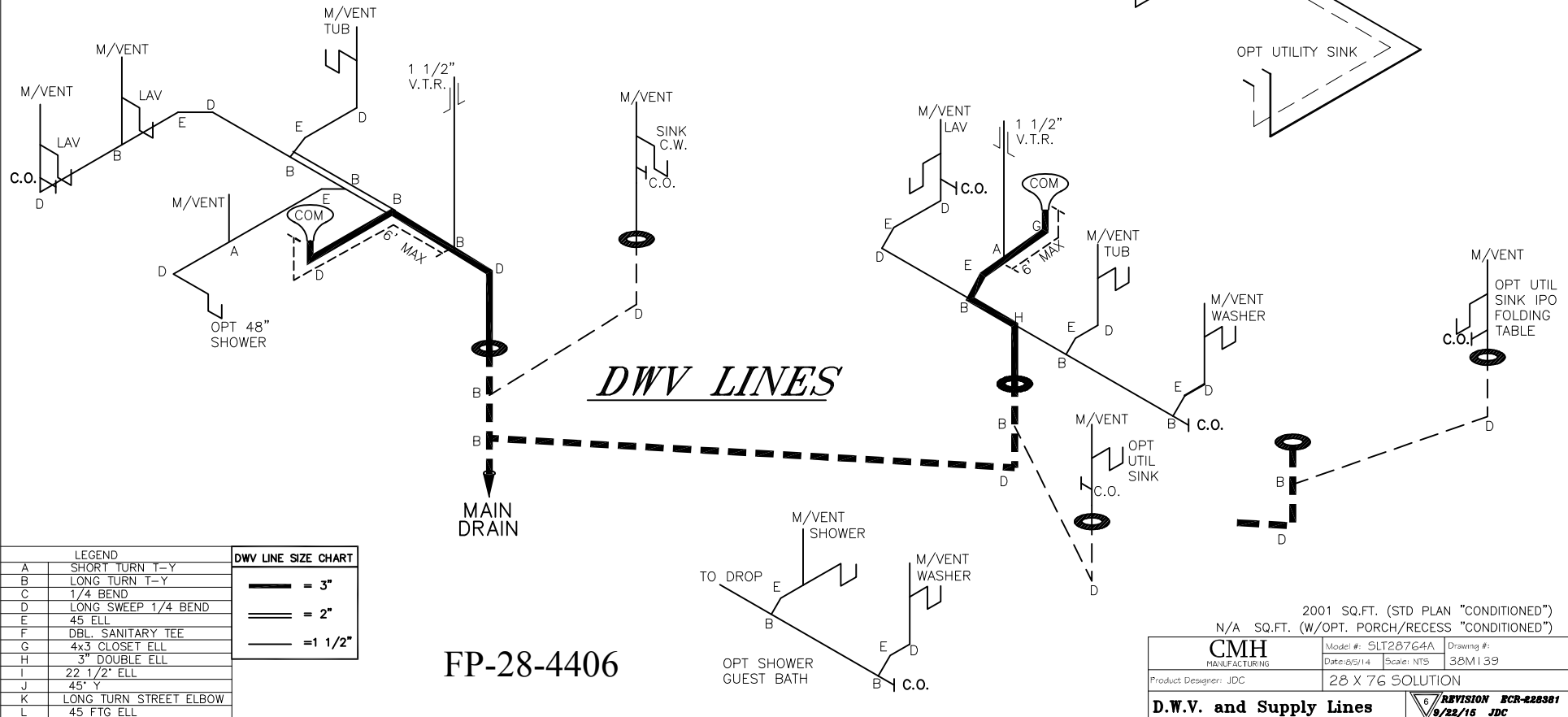


APPROVED **HWG** **APPROVED**
Revised
SEPT 28 2015
Federal Manufactured
Home Construction
And Safety Standards

SUPPLY LINES

DWV LINES

FP-28-4406



LEGEND		DWV LINE SIZE CHART	
A	SHORT TURN T-Y	—	= 3"
B	LONG TURN T-Y	—	= 2"
C	1/4 BEND	—	= 1 1/2"
D	LONG SWEEP 1/4 BEND		
E	45 ELL		
F	DBL. SANITARY TEE		
G	4x3 CLOSET ELL		
H	3" DOUBLE ELL		
I	22 1/2' ELL		
J	45° Y		
K	LONG TURN STREET ELBOW		
L	45 FTG ELL		

2001 SQ.FT. (STD PLAN "CONDITIONED") N/A SQ.FT. (W/OPT. PORCH/RECESS "CONDITIONED")	
CMH MANUFACTURING	Model #: 5LT28764A Date: 05/14 Scale: NT5
Product Designer: JDC	Drawing #: 38M139
28 X 76 SOLUTION	
D.W.V. and Supply Lines	
6/REVISION ECR-228381 9/22/16 JDC	