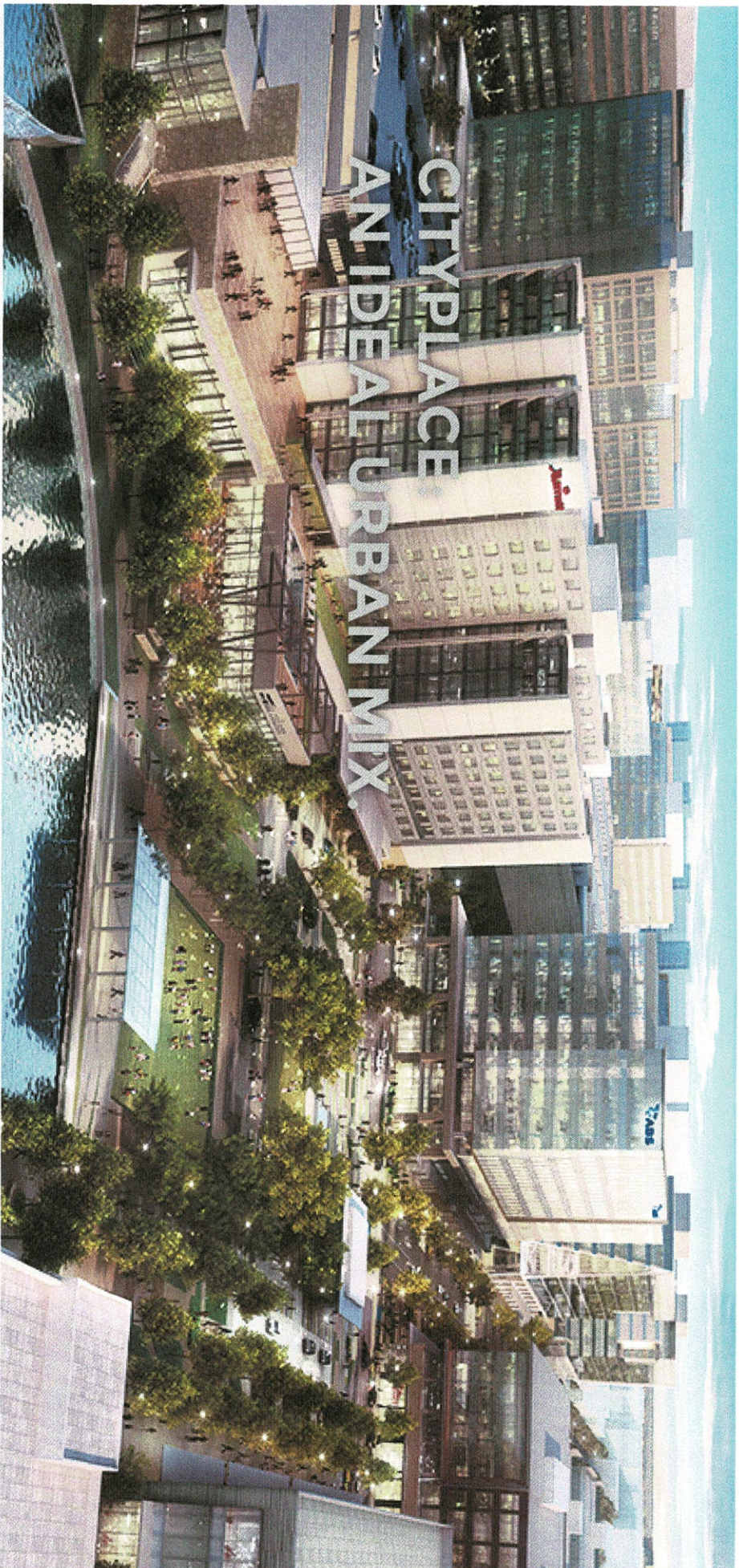
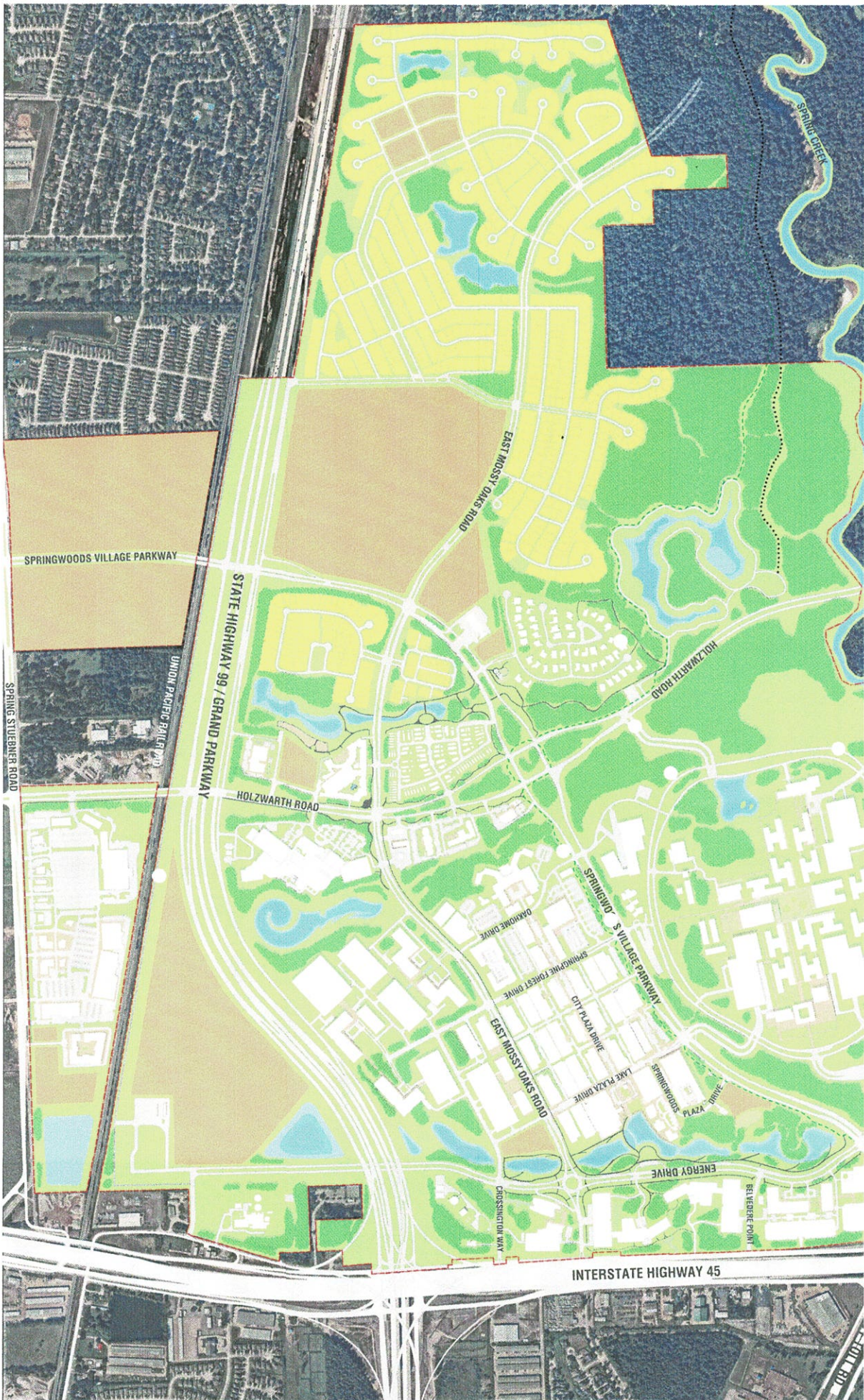


SPRINGWOODS VILLAGE



The heart of Springwoods Village.

SPRINGWOODS VILLAGE



Ideal access.

You'll want to connect with others and access the world from CityPlace. Nestled between I-45, the Grand Parkway, and the Hardy Toll Road, CityPlace keeps you in the pulse of the region and the world. It's just 20 miles north of downtown Houston, and a short 15 minute drive to Bush International Airport. The CityPlace urban district is accessible to the rest of the Springwoods Village community via bicycle and walking trails.



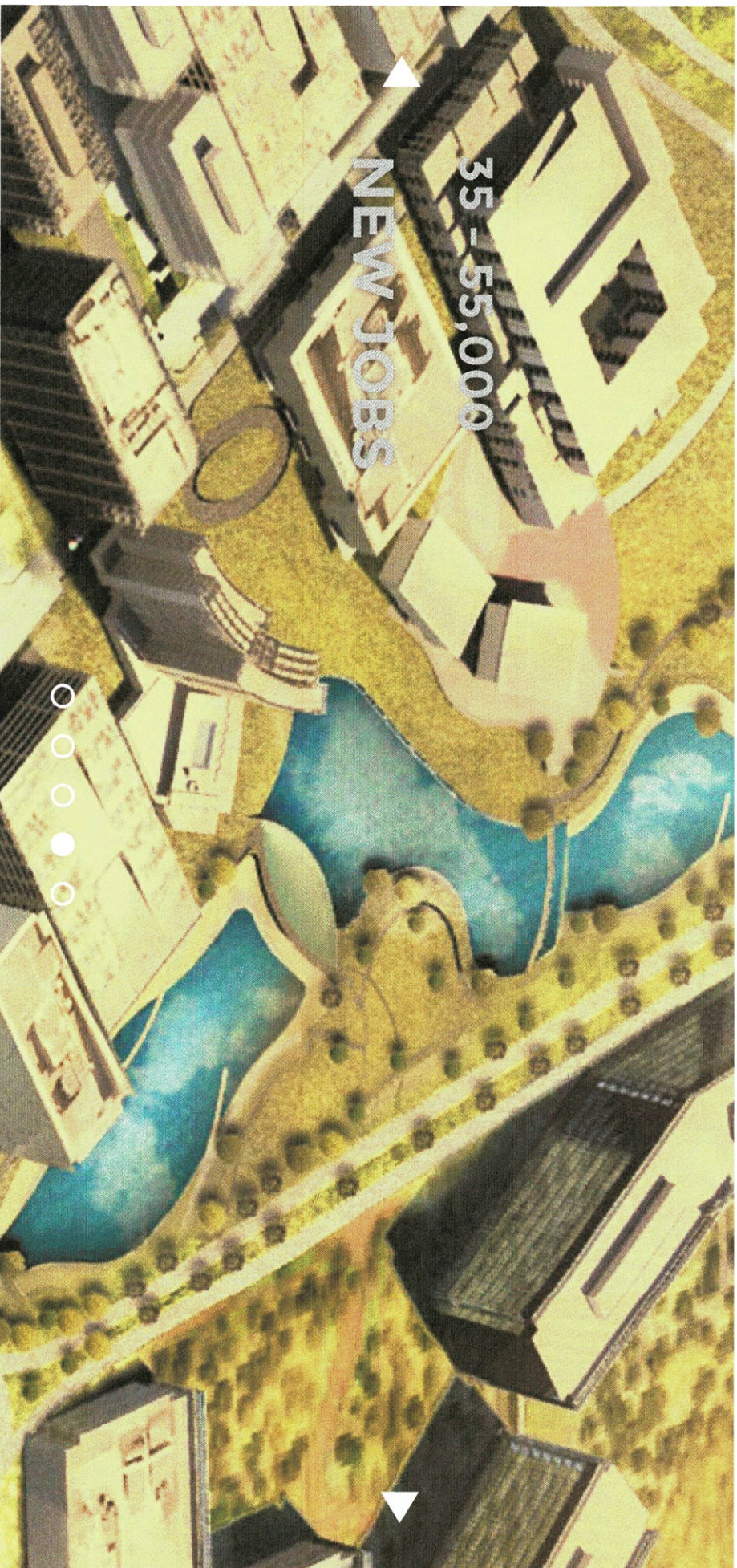
- About
- Amenities**
- News & Events
- More Information
- Contact

Sign Up For Our Newsletter

Saturday is race day! Spend the morning racing at @CHI_St Lukes Run Thru the Village 5K & the afternoon at... <https://t.co/ILCPvAID8I>

Posted on Apr 30 - 5:50pm, by Springwoods Village

SPRINGWOODS VILLAGE





A quick tour.

Welcome to North Houston's most forward-thinking mixed-use community. Springwoods Village is a 2,000 acre master planned community situated just south of The Woodlands and 20 miles north of downtown Houston. The community is being developed by CDC Houston, Inc. (a subsidiary of Coventry Development Corporation, New York). Springwoods Village is a new model of sustainability and greener living for the Houston region, preserving its natural ecosystems, building energy smart new homes, and reducing dependence on the car by providing a walkable mix of retail, dining, offices, and public amenities. Springwoods Village will build out its master plan over the next 10+ years.

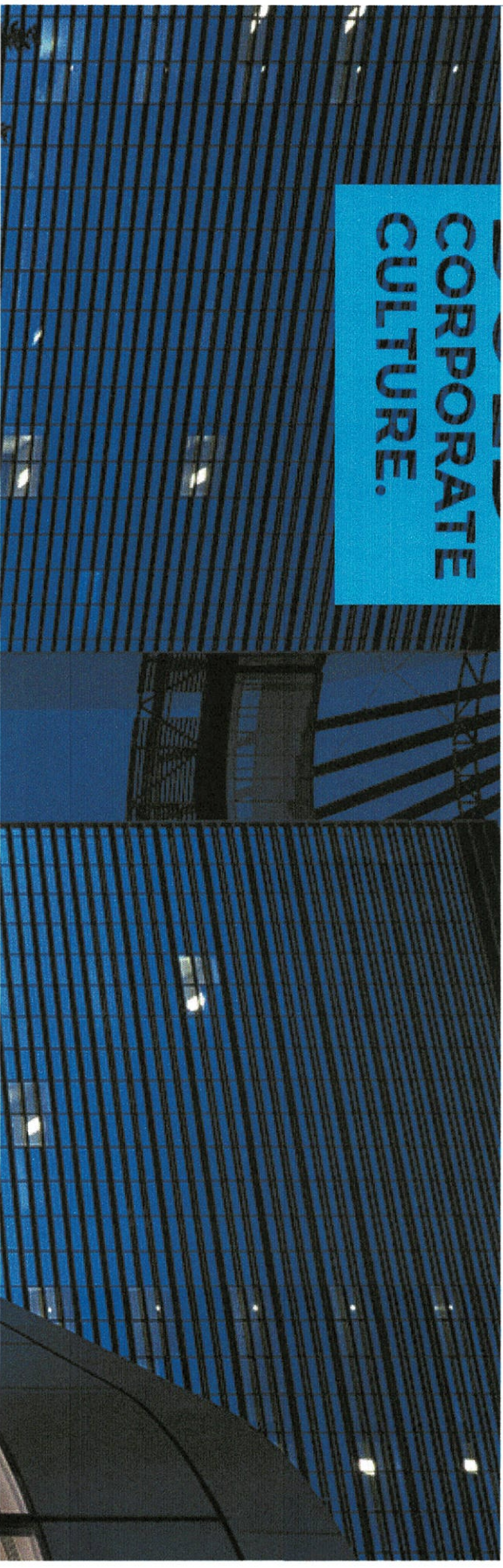
CityPlace is the heart of the community.

CityPlace is the jewel of our community, with the amenities, services, and vitality to make North Houston more dynamic than ever before. Our mixed-use urban district spans 60 acres, featuring a diverse blend of luxury residences, future-forward office buildings, dining and shopping. CityPlace offers an outdoor public plaza and the full-service Houston CityPlace Marriott with 337 guest rooms, flexible indoor/outdoor meeting and event spaces, restaurant and bar. From early morning to late in the evening, CityPlace is a dynamic, vibrant gathering place within the community.

SPRINGWOODS VILLAGE



CORPORATE
CULTURE.



Springwoods Village works.

Springwoods Village has dedicated over 9 million square feet to commercial space. This includes many world-class corporate campuses such as ExxonMobil, Southwestern Energy, the American Bureau of Shipping (ABS) and HP Inc. CHI St. Luke's Health has a state-of-the-art medical campus in Springwoods Village as well. A new corporate campus for Hewlett Packard Enterprise (HPE) will break ground in CityPlace in late 2019. CityPlace is developing multi-story office buildings with retail and restaurants at street level. The community is bustling with employees, companies, and growth opportunities.

SPRINGWOODS VILLAGE

The logo for Springwoods Village features a stylized graphic to the right of the text. It consists of three vertical bars of varying heights in shades of green and yellow, followed by a blue shape that resembles a stylized wave or a landscape element.

Springwood Village is a model of sustainability and greener living for the Houston region, preserving our natural ecosystems, building energy smart new homes, and reducing dependence on the car by providing a walkable mix of retail, dining, offices, and public amenities. Each residential neighborhood within Springwoods Village is situated within a 5-minute walk to shops, restaurants, a park corridor, or some other vibrant center of activity. Parks will have trails with pedestrian under-crossings at busy streets. In fact, all streets in Springwoods Village will have detached sidewalks with tree lawns or tree preserves to create more pedestrian-friendly, safe walking opportunities. Creating the perfect mix of urban and oasis.



Nature is at your doorstep.

Spring Creek flows through the Springwoods Village community, creating a two-mile long natural open space border that will be integrated with Houston's premier regional [Spring Creek Greenway](#). Our 150-acre Nature Preserve will contribute to the beauty of the Greenway as well. Spring Creek also provides access to 46 miles of trails, recreation and natural ecosystem in the Spring Creek Greenway.



- [About](#)
- [Amenities](#)
- [News & Events](#)
- [More Information](#)
- [Contact](#)

Sign Up For Our Newsletter

Saturday is race day! Spend the morning racing at @CHI_St Lukes Run Thru the Village 5K & the afternoon at... <https://t.co/ILCPvAID8I>