

JAN 08 2008

STEWART ROAD
(R.O.W. VARIES)

97
PARTIAL REPLAT
PALM BEACH, TEXAS

COUNTRY CLUB CIR.

PERMITTED PLANS

TRIMBLE & LINDSEY
SECTION 3

47.18 ACRES

LOS PALMAS BLVD.

BLOCK 1

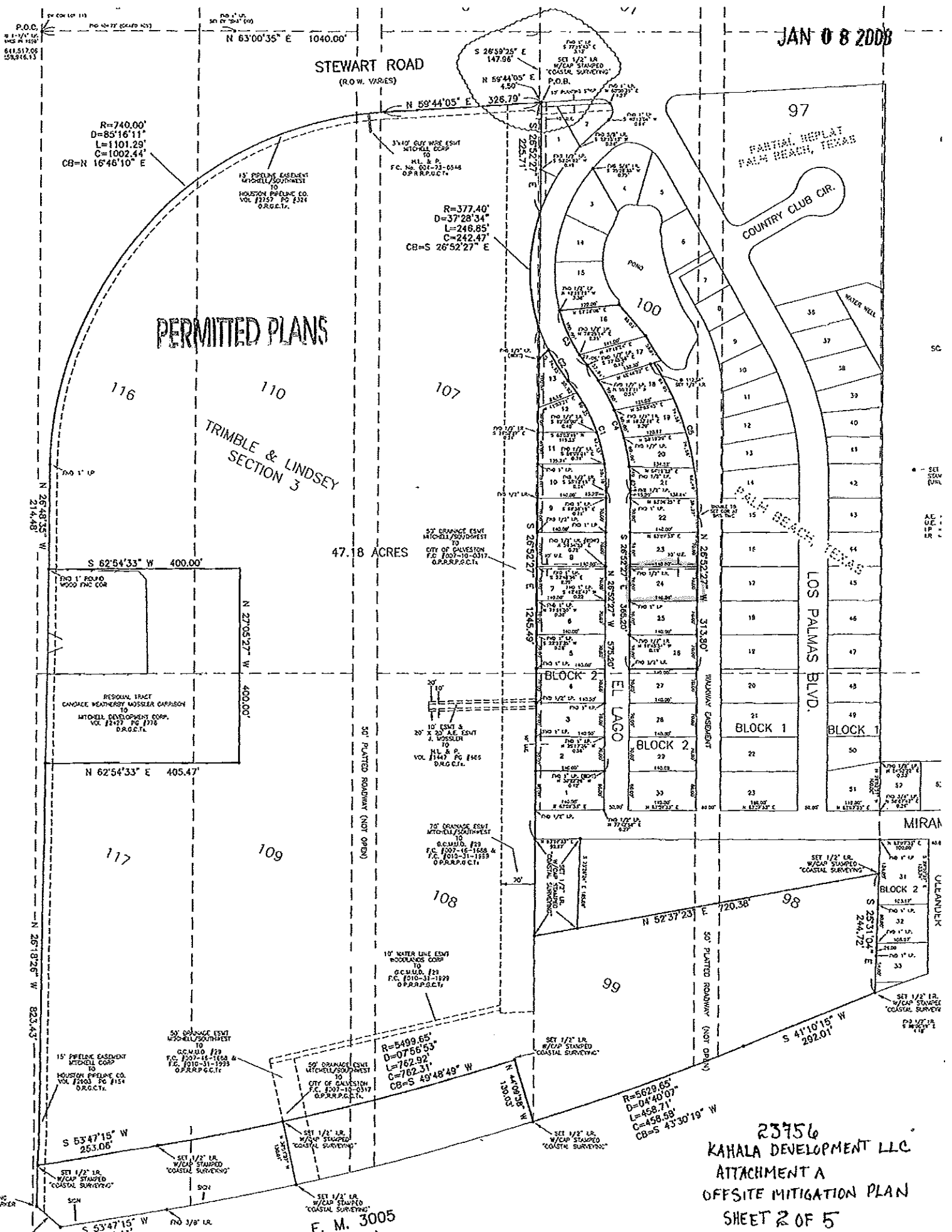
BLOCK 1

BLOCK 2

BLOCK 2

MIRAM

UPLANDER



P.O.D.
S 81°17'14\"/>

N 63°00'35\"/>

R=740.00'
D=85°16'11\"/>

R=377.40'
D=37°28'34\"/>

116

110

107

117

109

108

99

98

S 62°54'33\"/>

N 27°05'27\"/>

N 62°54'33\"/>

S 26°52'27\"/>

S 26°52'27\"/>

EL LAGO

BLOCK 2

BLOCK 2

BLOCK 2

BLOCK 2

BLOCK 2

BLOCK 2

BLOCK 2

BLOCK 2

BLOCK 2

BLOCK 2

BLOCK 2

BLOCK 2

BLOCK 2

BLOCK 2

23756
KAHALA DEVELOPMENT LLC
ATTACHMENT A
OFFSITE MITIGATION PLAN
SHEET 2 OF 5

F. M. 3005