

JAN 08 2008

STEWART ROAD
(R.O.W. VARIES)

97
PARTIAL REPLAT
PALM BEACH, TEXAS

COUNTRY CLUB CIR.

PERMITTED PLANS

TRIMBLE & LINDSEY
SECTION 3

47.18 ACRES

LOS PALMAS BLVD.

BLOCK 1

BLOCK 2

EL LAGO

MIRAM

BLOCK 2

BLOCK 1

BLOCK 2

BLOCK 1

BLOCK 2

BLOCK 1

BLOCK 2

BLOCK 1

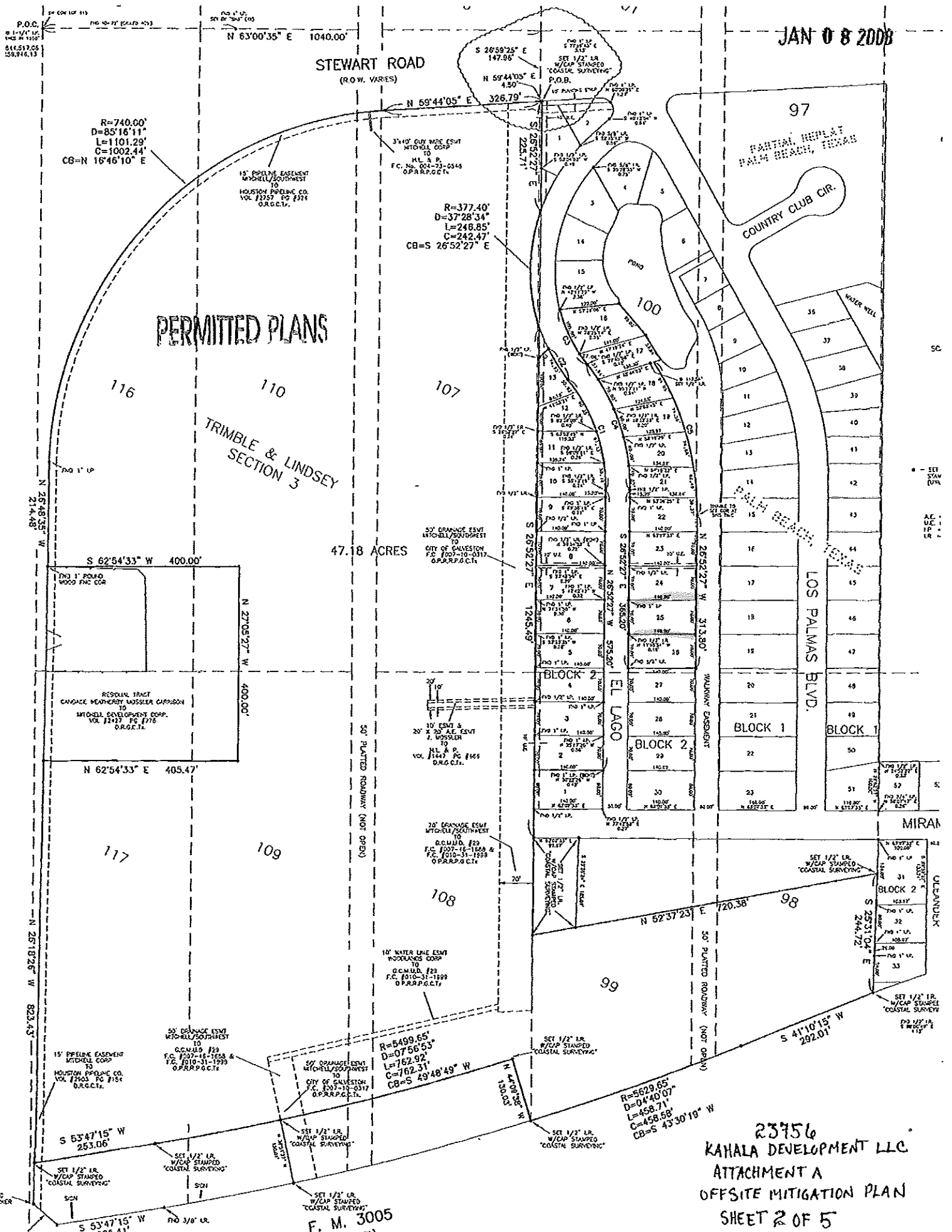
BLOCK 2

BLOCK 1

BLOCK 2

BLOCK 1

BLOCK 2



R=740.00'
D=85°16'11"
L=1101.29'
C=1002.44'
CB=N 16°46'10" E

R=377.40'
D=37°28'34"
L=248.85'
C=242.47'
CB=S 26°52'27" E

R=5499.65'
D=07°56'53"
L=762.92'
C=762.31'
CB=S 49°48'49" W

R=5629.65'
D=04°49'07"
L=458.71'
C=458.58'
CB=S 43°30'19" W

F. M. 3005

23756
KAHALA DEVELOPMENT LLC
ATTACHMENT A
OFFSITE MITIGATION PLAN
SHEET 2 OF 5