

LOOKING SOUTH ↑

Note: Drawing location of creek is estimated

5 +- ac.
Level (Wooded)

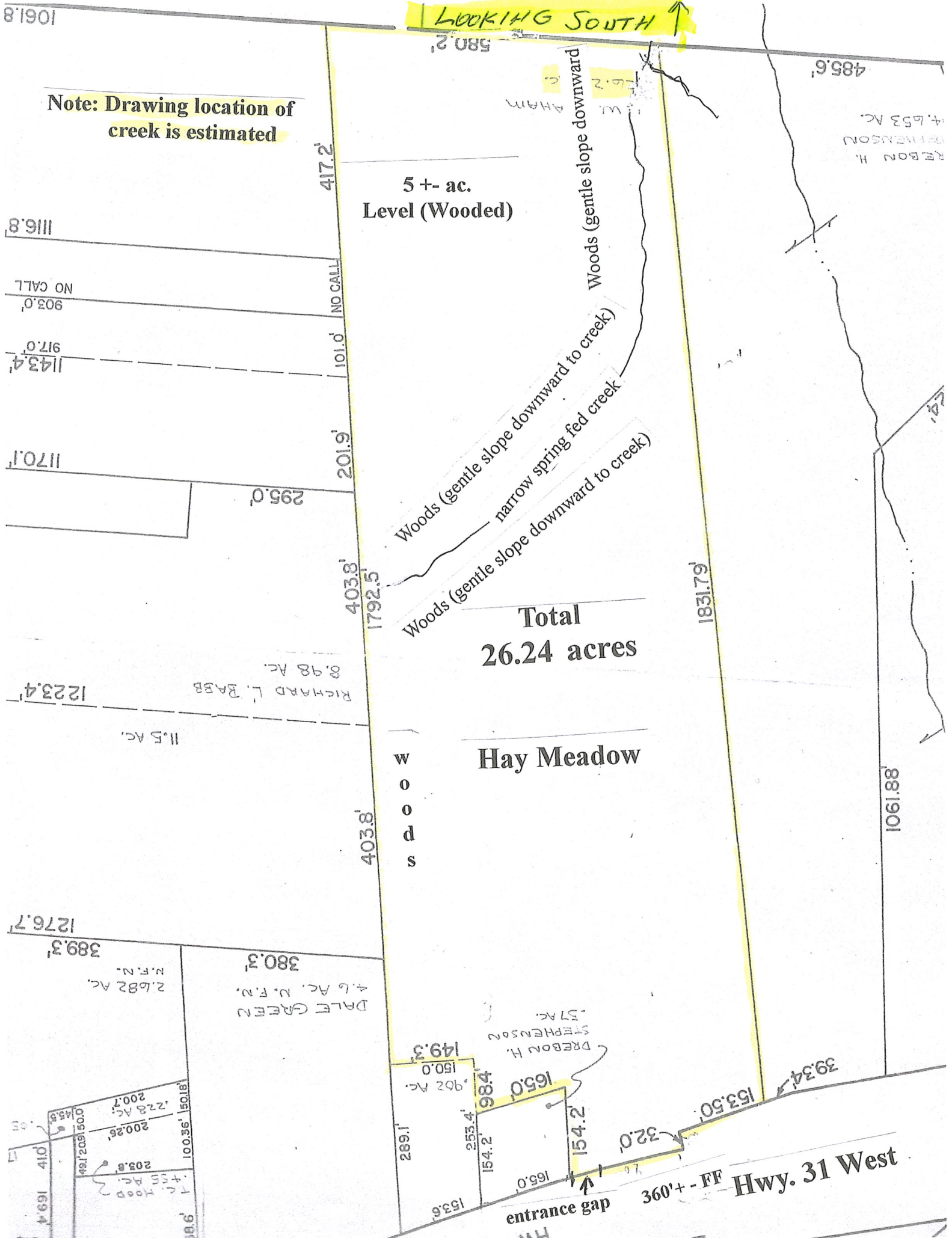
Woods (gentle slope downward)

Woods (gentle slope downward to creek)
narrow spring fed creek
Woods (gentle slope downward to creek)

Total
26.24 acres

Hay Meadow

W
O
O
D
S



1061.8

485.6

REBON H.
STEPHENSON
4.653 AC.

1116.8

903.0
NO CALL

1143.4
917.0

1170.1

295.0

201.9'

403.8'
1792.5'

1831.79'

1223.4'

RICHARD L. BAEB
8.98 AC.

11.5 AC.

1276.7'

389.3'

2.682 AC.
M.F.N.

380.3'

DALE GREEN
4.6 AC. M.F.N.

149.3'
150.0'
992 AC.

REBON H.
STEPHENSON
1.57 AC.

289.1'
253.4'
154.2'

165.0'
984'

entrance gap

360' - - +.09'

Hwy. 31 West

393.4'

1061.88