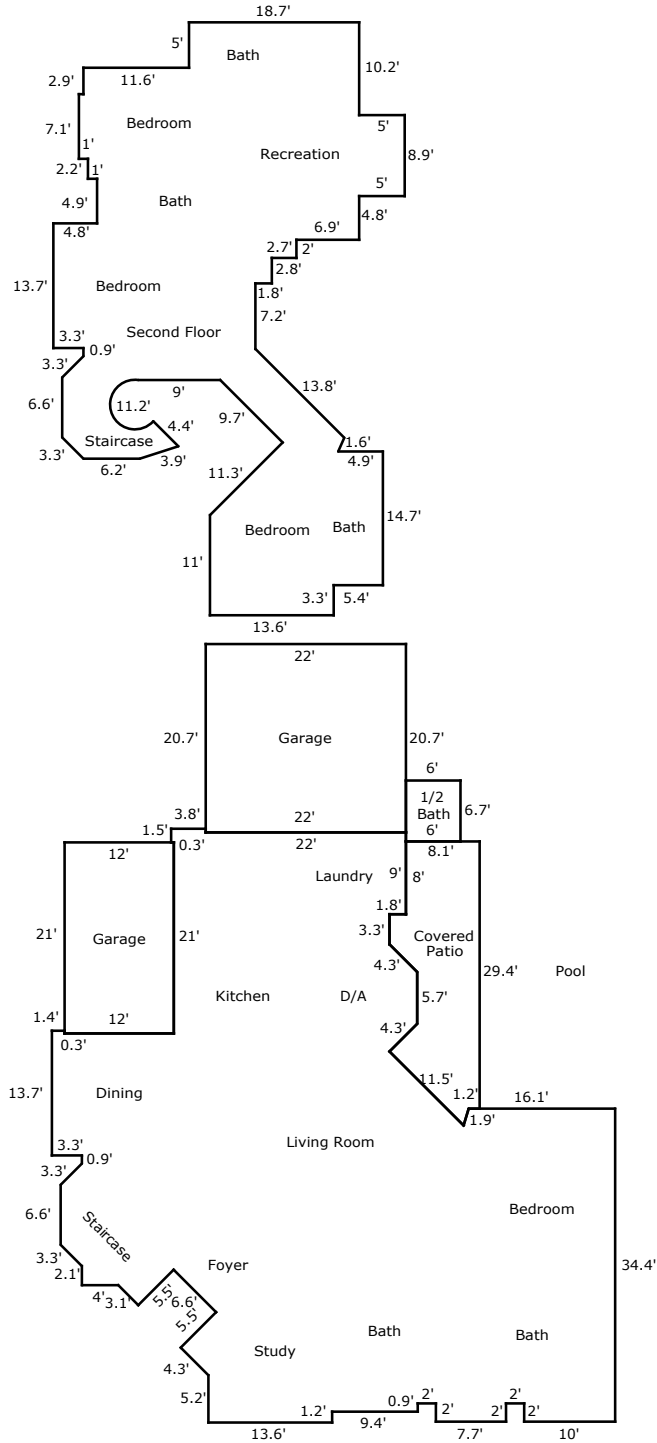


Building Sketch (Page - 1)

Borrower	N/A					
Property Address	3 Amulet Oaks Pl					
City	The Woodlands	County	Montgomery	State	TX	Zip Code 77382
Lender/Client						



Building Sketch (Page - 2)

Borrower	N/A					
Property Address	3 Amulet Oaks Pl					
City	The Woodlands	County	Montgomery	State	TX	Zip Code 77382
Lender/Client						

TOTAL Sketch by a la mode, inc.

Area Calculations Summary

Living Area		Calculation Details	
First Floor	2733.9 Sq ft	$0.5 \times 3 \times 3 = 4.6$ $0.5 \times 3 \times 3 = 4.6$ $5.7 \times 3 = 17.3$ $7.7 \times 2 = 15.4$ $0.5 \times 2.3 \times 2.3 = 2.7$ $0.5 \times 2.3 \times 2.3 = 2.7$ $6.6 \times 2.3 = 15.4$ $3.8 \times 0.4 = 1.5$ $25.8 \times 1.1 = 28.4$ $25.5 \times 7.9 = 201.4$ $23.7 \times 13.1 = 310.5$ $1.4 \times 0.3 = 0.4$ $37.1 \times 2 = 73.5$ $0.5 \times 8.1 \times 8.1 = 33.1$ $37.1 \times 8.1 = 301.7$ $0.5 \times 0.6 \times 1.8 = 0.5$ $16.1 \times 1.8 = 29.7$ $61.9 \times 3.3 = 203.5$ $58.6 \times 12.6 = 736.6$ $0.5 \times 1.7 \times 1.7 = 1.4$ $8.4 \times 1.7 = 14.2$ $0.5 \times 4.4 \times 2.2 = 4.8$ $0.5 \times 4.7 \times 4.7 = 10.9$ $43.9 \times 4.7 = 204.7$ $0.5 \times 3.9 \times 3.9 = 7.6$ $43.9 \times 3.9 = 170.5$ $0.5 \times 3 \times 3 = 4.6$ $44.7 \times 3 = 135.9$ $44.7 \times 3.1 = 138.6$ $23 \times 0.9 = 20.7$ $13.6 \times 1.2 = 16.3$ $10 \times 2 = 20$	
Second Floor	1488.3 Sq ft	$0.5 \times 2.3 \times 2.3 = 2.7$ $0.5 \times 2.3 \times 2.3 = 2.7$ $6.6 \times 2.3 = 15.4$ $8.9 \times 5 = 44.5$ $13.7 \times 3.3 = 45.2$ $7.1 \times 0.5 = 3.6$ $10 \times 0.5 = 5$ $25.9 \times 1.5 = 38.8$ $12.2 \times 1 = 12.2$ $43 \times 4.5 = 194.7$ $0.5 \times 0.5 \times 0.2 = 0$ $8.2 \times 0.2 = 1.4$ $0.5 \times 4.1 \times 1.5 = 3$ $0.5 \times 1.5 \times 0.5 = 0.4$ $3.6 \times 1.5 = 5.4$ $0.5 \times 3.6 \times 2.8 = 5$ $34.3 \times 5.6 = 191.1$ $39.3 \times 3.4 = 134.9$ $0.5 \times 8 \times 8 = 31.9$ $11 \times 8 = 87.9$ $0.5 \times 3.9 \times 3.9 = 7.5$ $39.3 \times 3.9 = 152.1$ $0.5 \times 3 \times 3 = 4.5$ $0.5 \times 3 \times 3 = 4.5$ $4.3 \times 3 = 12.8$ $0.5 \times 5.6 \times 5.6 = 15.7$ $20.7 \times 5.6 = 115.9$ $0.5 \times 0.5 \times 0.5 = 0.1$ $16.9 \times 0.5 = 8.4$ $14.7 \times 4.9 = 72$ $0.5 \times 2.2 \times 0.7 = 0.7$ $28.7 \times 1.8 = 51.7$ $25.9 \times 2.7 = 69.9$ $23.9 \times 6.9 = 164.9$ Arc = 18.4	
Total Living Area (Rounded):		4222 Sq ft	
Non-living Area			
Bath	40.2 Sq ft	$6 \times 6.7 = 40.2$	
1 Car Garage	252 Sq ft	$12 \times 21 = 252$	
2 Car Garage	455.4 Sq ft	$20.7 \times 22 = 455.4$	

Building Sketch (Page - 3)

Borrower	N/A						
Property Address	3 Amulet Oaks Pl						
City	The Woodlands	County	Montgomery	State	TX	Zip Code	77382
Lender/Client	[REDACTED]						

TOTAL Sketch by a la mode, inc.

Area Calculations Summary

Non-living Area	
Covered Patio	232.2 Sq ft
	8.1 × 8 = 64.8
	9.9 × 3.3 = 32.7
	0.5 × 3 × 3 = 4.6
	6.9 × 3 = 20.9
	6.9 × 5.7 = 39.1
	0.5 × 3 × 3 = 4.6
	6.9 × 3 = 20.9
	0.5 × 6.3 × 6.3 = 19.8
	3.6 × 6.3 = 22.7
	0.5 × 2.4 × 1.8 = 2.2