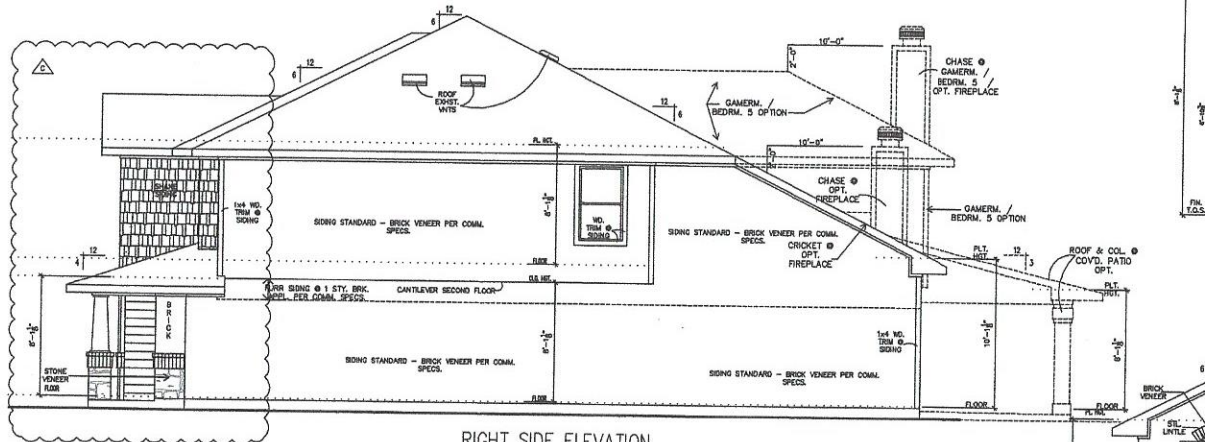
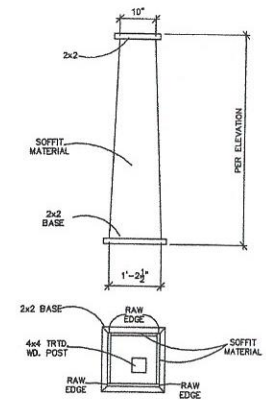


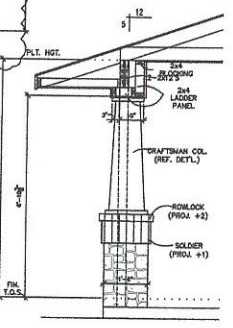
LEFT SIDE ELEVATION
SCALE: 1/8" = 1'-0"



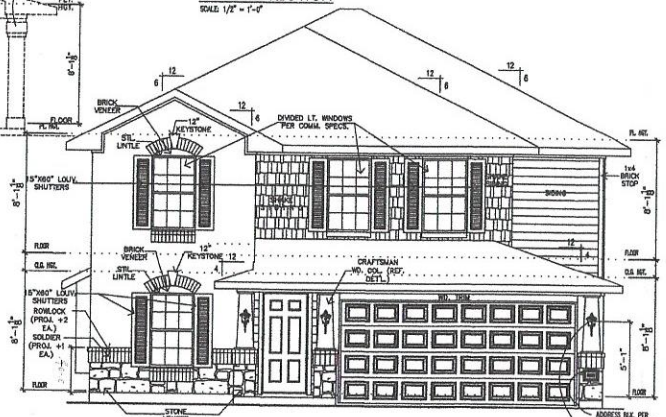
RIGHT SIDE ELEVATION
SCALE: 1/8" = 1'-0"



CRAFTSMAN COL. DET'L
SCALE: 3/4" = 1'-0" @ 2 1/2" X 3" PRINTS



PORCH SECTION
SCALE: 1/2" = 1'-0"



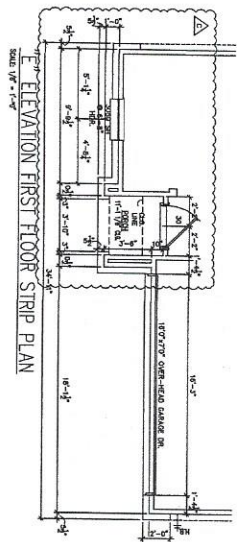
STONE OPTION "D" FRONT ELEVATION
SCALE: 1/8" = 1'-0"

| ATTIC VENTILATION | | | |
|----------------------|-------|--------|---------|
| GROSS ROOF AREA | 2080 | | |
| TOTAL VENTING REQ'D | 6.58 | | |
| SOFFIT VENTING REQ'D | 3.43 | | |
| UPPER VENTING REQ'D | 3.43 | | |
| | REQ'D | ACTUAL | |
| SOFFIT VENTING | 12 | 120.0 | LN. FT. |
| UPPER VENTING | 27 | 8.33 | LN. FT. |
| NET GAIN | 3 | 3 | |

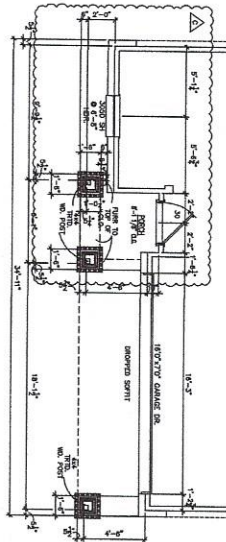
- GENERAL NOTES : ELEVATIONS**
- 1) MIN. # TO BRIDGE AT BRICK SLOPE BRIDGE JUNT FOR PROPER BRICKING SEE SITE PLAN PLAN FOR CORNER ELEVATIONS.
 - 2) BRICK POINTINGS ARE # 1/4" WOODEN.
 - 3) BRICK VENEER SHALL BE DIRECTLY ON PORCH SERVICE - BRICK VENEER SIDE IS REQUIRED.
 - 4) BRICK TO PROVIDE NEP HOLE & STEEL LINTEL.
 - 5) NO BRICK FOR CORNER STILES.
 - 6) MINIMUM REQUIRED ROOF VENTILATION: A MINIMUM OF 7 ROOF EXIST. VENTS @ 41 SQ. IN. AREA LOCATED IN THE UPPER PORTION OF THE SPACE TO BE VENTILATED AT LEAST 3 FEET ABOVE THE EAVE OR CORNICE VENTS OR A MINIMUM OF 23 LINEAL FT. OF BRICK VENT @ 18 SQ. IN. PER LINEAL FT. W/FA & A MINIMUM OF 19-4"x10" (22.8 SQ. IN.) OF A MINIMUM OF 8-8"x10" (64 SQ. IN.) SOFFIT IN-TAKE VENTS, OR A MINIMUM OF 83 LINEAL FT. OF VENTS HANGING @ 6 SQ. IN. PER LINEAL FT. W/FA. SOFFITS @ BRICK VENEER BY ROOFER SLOPES OF 10:12 OR GREATER REQUIRE EITHER 4"x10" OR CONTINUOUS SOFFIT VENT.

- STEEL LINTEL NOTES:**
- 1) LINTEL STEEL SHALL BE PER ASTM A36.
 - 2) LINTELS SHALL BEAR IF IN MASONRY AT END BIRD.
 - 3) LINTELS SHALL BE COATED IN ACCORDANCE WITH LOCAL CODE REQUIREMENTS FOR CORROSION RESISTANCE.
 - 4) LINTELS TO PROVIDE NEP HOLE & ON FIREPLACE.
 - 5) LINTELS SHALL BE BOLTED TO THE HEADER AS SPECIFIED BY ENGINEER.

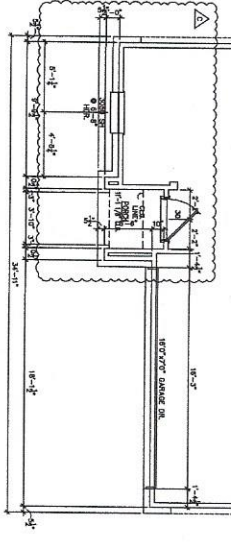
- MASONRY NOTES**
- 1) MASONRY TIES - (SIZE AND SPACING) MASONRY VENEER SHALL BE ANCHORED TO THE SUPPORTING WALL WITH CORROSION RESISTANT TIES PER FD303.7.3. VENEER TIES @ STRAND WIRE SHALL BE NOT LESS THAN 3/8" I.D. GAUGE WIRE OF SHEET METAL SHALL NOT BE LESS THAN NO.22 GAUGE BY 7/8" INCH (22.8 MM) CORRUGATED. EACH TIE SHALL BE SPACED NOT MORE THAN 24 INCHES (610 MM) ON CENTER HORIZONTALLY AND SHALL SUPPORT NOT MORE THAN 3-1/4" SQUARE FEET (0.305 M²) OF WALL AREA. KEEP HOLES SHALL BE INDICATED IN THE OUTSIDE WYTHE OF MASONRY WALLS AT A MAXIMUM SPACING OF 33 INCHES (838 MM) ON CENTER SHALL NOT BE LESS THAN 3/8" INCH (16 MM) IN DIAMETER AND SHALL BE LOCATED IMMEDIATELY ABOVE THE FLASHING. IRC SECTION R303.7.4.1
 - 2) MASONRY WALL WITH STILES - TO BE DETERMINED BY THE SPACING OF MASONRY WALL TIES. EACH TIE SHALL BE SPACED NOT MORE THAN 24 INCHES (610 MM) ON CENTER HORIZONTALLY AND SHALL SUPPORT NOT MORE THAN 3-1/4" SQUARE FEET (0.305 M²) OF WALL AREA. IRC SEC R303.7.4.1



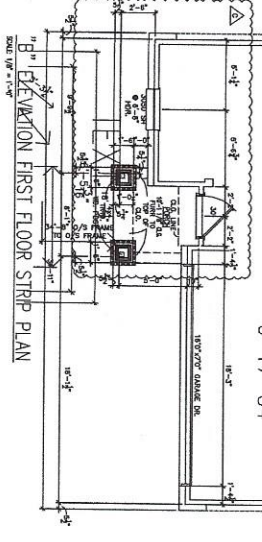
E ELEVATION FIRST FLOOR STRIP PLAN
SCALE: 1/8" = 1'-0"



F ELEVATION FIRST FLOOR STRIP PLAN
SCALE: 1/8" = 1'-0"

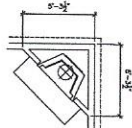


G ELEVATION FIRST FLOOR STRIP PLAN
SCALE: 1/8" = 1'-0"

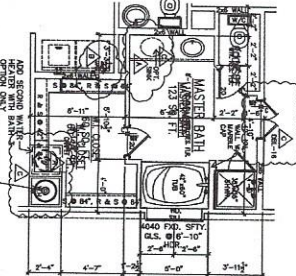


H ELEVATION FIRST FLOOR STRIP PLAN
SCALE: 1/8" = 1'-0"

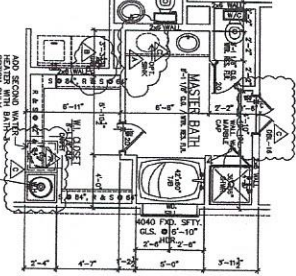
6-17-04



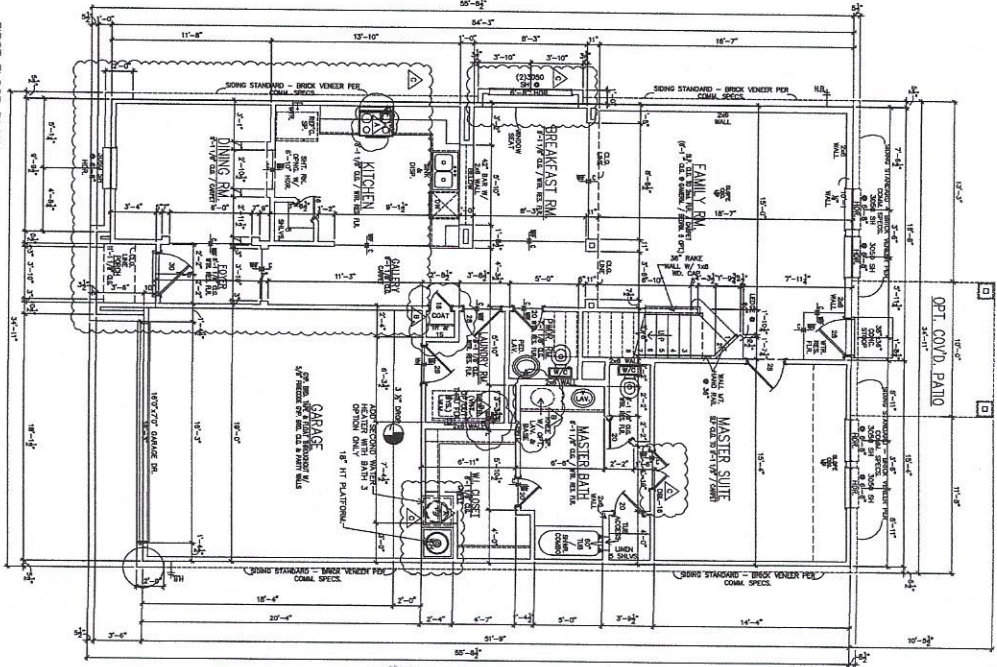
FIREFACE OPTION
SCALE: 1/8" = 1'-0"



LUXURY MASTER BATH OPTION
SCALE: 1/8" = 1'-0"

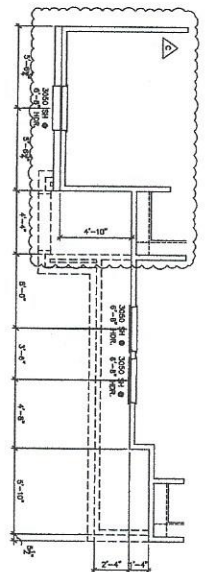


SHOWER MASTER BATH OPTION
SCALE: 1/8" = 1'-0"

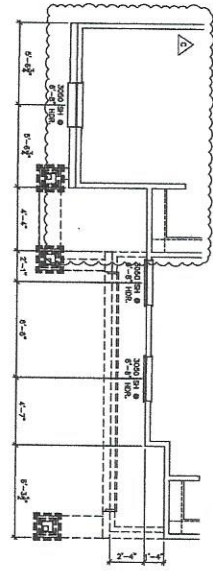


FIRST FLOOR PLAN

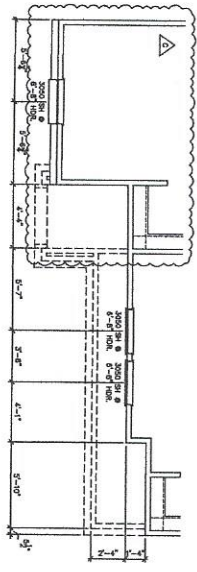
- GENERAL NOTES: 1. UNLESS OTHERWISE SPECIFIED, ALL DIMENSIONS ARE IN FEET AND INCHES. 2. FINISHES TO BE DETERMINED BY ARCHITECT. 3. ALL CONSTRUCTION SHALL BE IN ACCORDANCE WITH THE LATEST EDITIONS OF THE INTERNATIONAL RESIDENTIAL CODE BOOK AND THE INTERNATIONAL MECHANICAL AND PLUMBING CODE BOOK. 4. ALL CONSTRUCTION SHALL BE IN ACCORDANCE WITH THE LATEST EDITIONS OF THE INTERNATIONAL RESIDENTIAL CODE BOOK AND THE INTERNATIONAL MECHANICAL AND PLUMBING CODE BOOK. 5. ALL CONSTRUCTION SHALL BE IN ACCORDANCE WITH THE LATEST EDITIONS OF THE INTERNATIONAL RESIDENTIAL CODE BOOK AND THE INTERNATIONAL MECHANICAL AND PLUMBING CODE BOOK. 6. ALL CONSTRUCTION SHALL BE IN ACCORDANCE WITH THE LATEST EDITIONS OF THE INTERNATIONAL RESIDENTIAL CODE BOOK AND THE INTERNATIONAL MECHANICAL AND PLUMBING CODE BOOK. 7. ALL CONSTRUCTION SHALL BE IN ACCORDANCE WITH THE LATEST EDITIONS OF THE INTERNATIONAL RESIDENTIAL CODE BOOK AND THE INTERNATIONAL MECHANICAL AND PLUMBING CODE BOOK. 8. ALL CONSTRUCTION SHALL BE IN ACCORDANCE WITH THE LATEST EDITIONS OF THE INTERNATIONAL RESIDENTIAL CODE BOOK AND THE INTERNATIONAL MECHANICAL AND PLUMBING CODE BOOK. 9. ALL CONSTRUCTION SHALL BE IN ACCORDANCE WITH THE LATEST EDITIONS OF THE INTERNATIONAL RESIDENTIAL CODE BOOK AND THE INTERNATIONAL MECHANICAL AND PLUMBING CODE BOOK. 10. ALL CONSTRUCTION SHALL BE IN ACCORDANCE WITH THE LATEST EDITIONS OF THE INTERNATIONAL RESIDENTIAL CODE BOOK AND THE INTERNATIONAL MECHANICAL AND PLUMBING CODE BOOK.



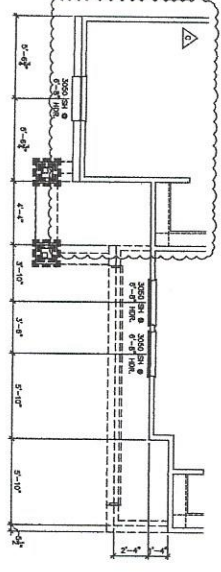
1" = 1'-0" ELEVATION SECOND FLOOR STRIP PLAN
SCALE: 1/8" = 1'-0"



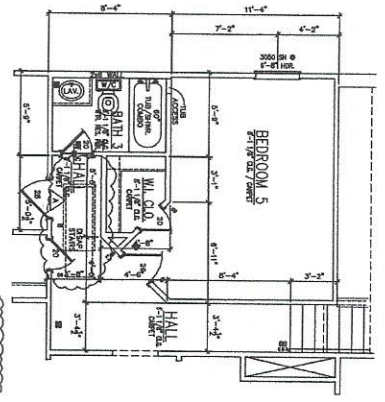
1" = 1'-0" ELEVATION SECOND FLOOR STRIP PLAN
SCALE: 1/8" = 1'-0"



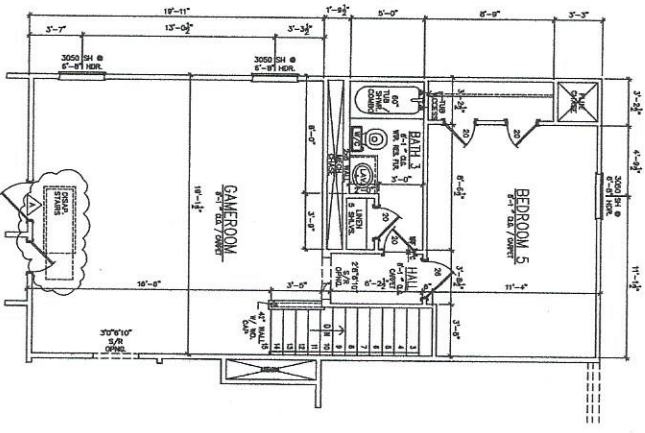
1" = 1'-0" ELEVATION SECOND FLOOR STRIP PLAN
SCALE: 1/8" = 1'-0"



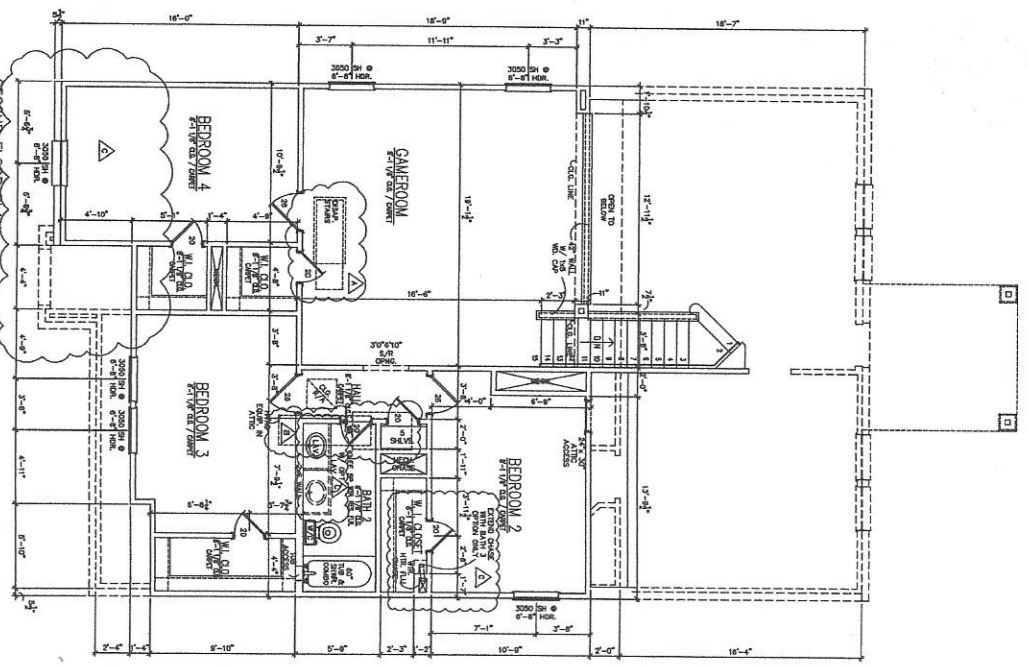
1" = 1'-0" ELEVATION SECOND FLOOR STRIP PLAN
SCALE: 1/8" = 1'-0"



1" = 1'-0" BEDROOM 5 OPTION
SCALE: 1/8" = 1'-0"



1" = 1'-0" GAMEROOM / BEDROOM 5 OPTION
SCALE: 1/8" = 1'-0"



1. 3. SCHEDULE A MATERIALS, ALL OTHERS SPECIFIED
 2. 4. SCHEDULE B MATERIALS, ALL OTHERS SPECIFIED
 5. 6. SCHEDULE C MATERIALS, ALL OTHERS SPECIFIED
 7. 8. SCHEDULE D MATERIALS, ALL OTHERS SPECIFIED
 9. 9. SCHEDULE E MATERIALS, ALL OTHERS SPECIFIED
 10. 10. SCHEDULE F MATERIALS, ALL OTHERS SPECIFIED
 11. 11. SCHEDULE G MATERIALS, ALL OTHERS SPECIFIED
 12. 12. SCHEDULE H MATERIALS, ALL OTHERS SPECIFIED
 13. 13. SCHEDULE I MATERIALS, ALL OTHERS SPECIFIED
 14. 14. SCHEDULE J MATERIALS, ALL OTHERS SPECIFIED
 15. 15. SCHEDULE K MATERIALS, ALL OTHERS SPECIFIED
 16. 16. SCHEDULE L MATERIALS, ALL OTHERS SPECIFIED
 17. 17. SCHEDULE M MATERIALS, ALL OTHERS SPECIFIED
 18. 18. SCHEDULE N MATERIALS, ALL OTHERS SPECIFIED
 19. 19. SCHEDULE O MATERIALS, ALL OTHERS SPECIFIED
 20. 20. SCHEDULE P MATERIALS, ALL OTHERS SPECIFIED
 21. 21. SCHEDULE Q MATERIALS, ALL OTHERS SPECIFIED
 22. 22. SCHEDULE R MATERIALS, ALL OTHERS SPECIFIED
 23. 23. SCHEDULE S MATERIALS, ALL OTHERS SPECIFIED
 24. 24. SCHEDULE T MATERIALS, ALL OTHERS SPECIFIED
 25. 25. SCHEDULE U MATERIALS, ALL OTHERS SPECIFIED
 26. 26. SCHEDULE V MATERIALS, ALL OTHERS SPECIFIED
 27. 27. SCHEDULE W MATERIALS, ALL OTHERS SPECIFIED
 28. 28. SCHEDULE X MATERIALS, ALL OTHERS SPECIFIED
 29. 29. SCHEDULE Y MATERIALS, ALL OTHERS SPECIFIED
 30. 30. SCHEDULE Z MATERIALS, ALL OTHERS SPECIFIED