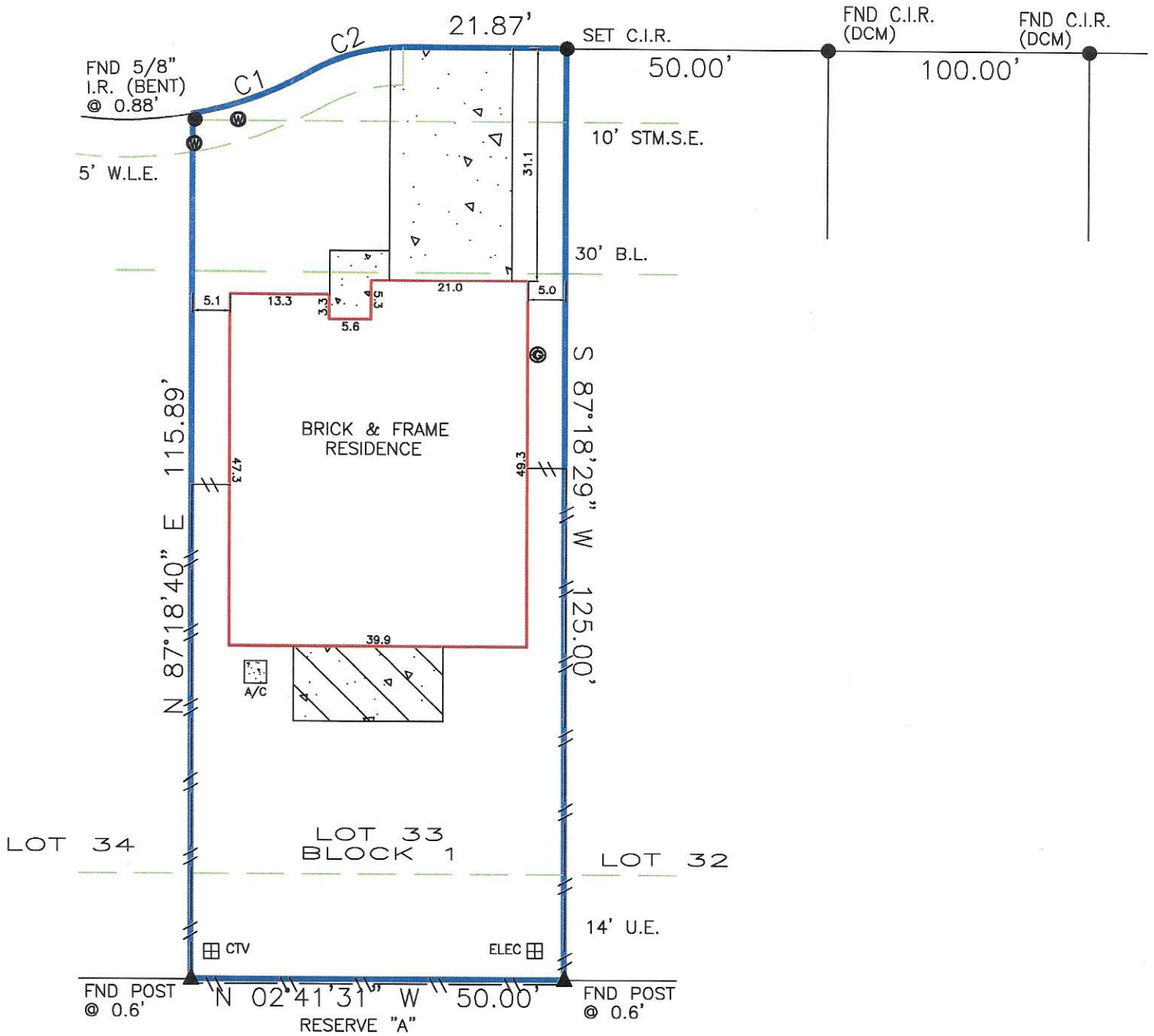


DRIFTWOOD LANE

(WIDTH VARIES)

1" = 20'


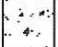


CURVE	ARC LENGTH	RADIUS	DELTA ANGLE	CHORD BEARING	CHORD LENGTH
C1	16.78'	50.00'	19°13'42"	N 22°57'47" W	16.70'
C2	13.04'	25.00'	29°53'08"	N 17°38'05" W	12.89'

DCM = DIRECTIONAL CONTROL MONUMENT
 B.L. = BUILDING LINE
 U.E. = UTILITY EASEMENT
 A.E. = AERIAL EASEMENT
 S.S.E. = SANITARY SEWER EASEMENT
 STM.S.E. = STORM SEWER EASEMENT

Bearings based on identified monuments along the west right-of-way line of Driftwood Lane.
 Agreement for electric service (2006048881)

— — — — — OVERHEAD ELECTRIC
 — — — — — EASEMENT
 — — — — — BUILDING LINE
 — — — — — FENCE

 COVER
 CONCRETE

REALTOR:



GE No. 52084 GAT74

LENDER:

Gateway Mortgage Group, LLC

SURVEYOR INFORMATION:

LAPLANT SURVEYORS, INC.
 17150 BUTTE CREEK 135
 Houston, Texas 77090
 281-440-8890
 www.houstonlandsurveying.com