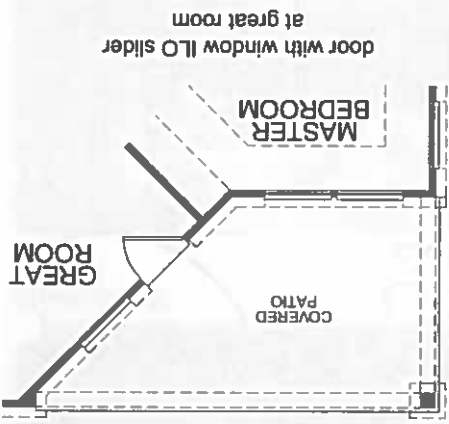
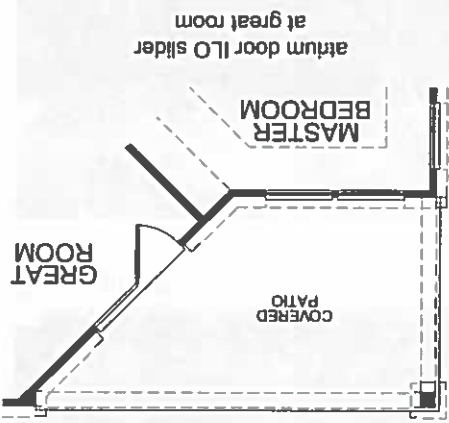
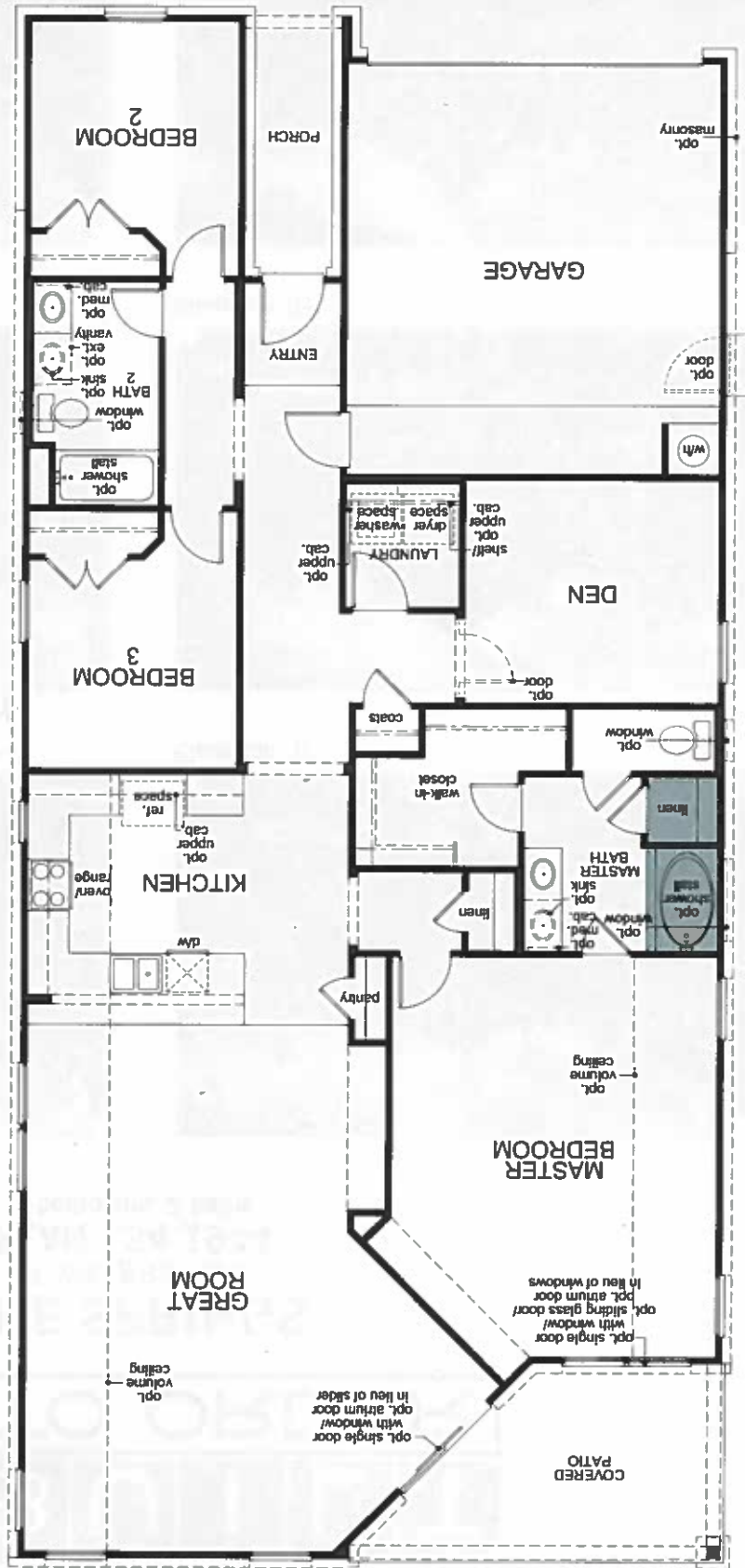


Floor Plan Options

- Kitchen:**
 - Upgrade kitchen, Raised breakfast bar
- Great Room:**
 - Door with window ILO slider, Atrium door ILO slider, Fireplace, Covered patio
- Master Bath:**
 - Full vanity cabinet, Vanity with dual sinks, 42" Garden tub, Shower ILO tub, Separate tub and shower with low wall, Medicine cabinet
- Bath 2:**
 - Extended vanity with knee space, Extended vanity cabinet, Shower ILO tub, Medicine cabinet
- Laundry:**
 - Upper cabinets
- Windows:**
 - Optional per plan
- Ceilings:**
 - Volume, tray & coffered per plan



© 2012 KB Home. All rights reserved. KB Home reserves the right to change floor plan specifications, prices, financing, terms and availability without prior notice and may vary by neighborhood, home site location and home series. Special wall and window treatments, custom paint colors, photographs, furniture, landscaping, custom designed walk and patio treatments and many other items featured in and around the model homes are decorative suggestions, are not included in the purchase price and are not available for purchase from KB Home. Windows, columns, porches and posts may vary per elevation and pre-determined home site. Handicaps and floor plans are subject to change without notice. See sales representative for details. KB Home is not a custom homebuilder and does not offer "only as is" options or upgrades. See sales representative for details. The Springs at Waterstone (SP1) Plan 134.1944 - 07/20/12 - PRELIMINARY

Your new KB Home can be built to order so you'll enjoy the features you want most. Plus you can choose from a variety of personalizing interior features and details at KB Home Studio. Select appliances, cabinets, countertops, lighting, flooring, and more. Everything you need to create a home as unique as you.

