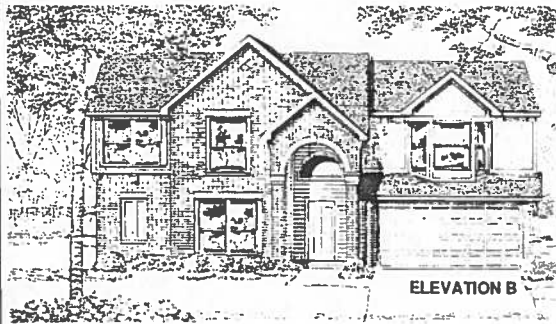




ELEVATION A



ELEVATION B



ELEVATION C

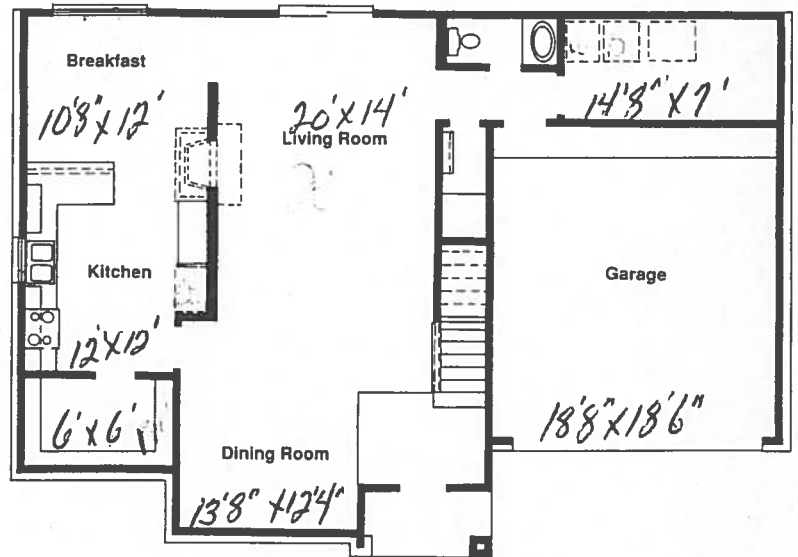
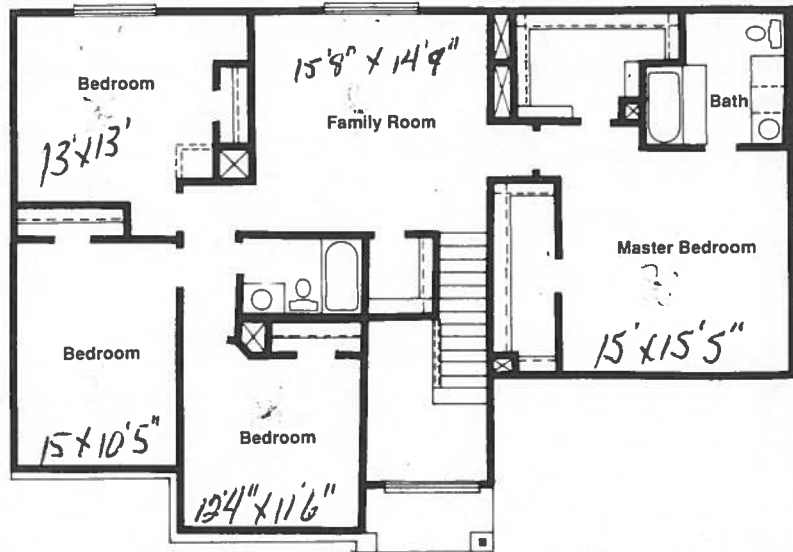
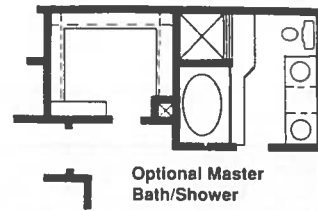
The Westbrook

Approximately 2,487 Square Feet

The Westbrook is a home designed for today's family lifestyle. Downstairs, the Westbrook features formal living and dining, a powder bath, a large utility room, a breakfast room and a country kitchen with a "super pantry". The upstairs includes three secondary bedrooms with an adjoining full bath, a family room or game-room, and a master suite with a full bath and two large walk-in closets.



All square footage is approximate. In a continuing program to improve each home we build, Espree Homes reserves the right to change specifications and designs without notice. Front windows may vary per elevation.



ESPREE
HOMES
 WHY PAY MORE?