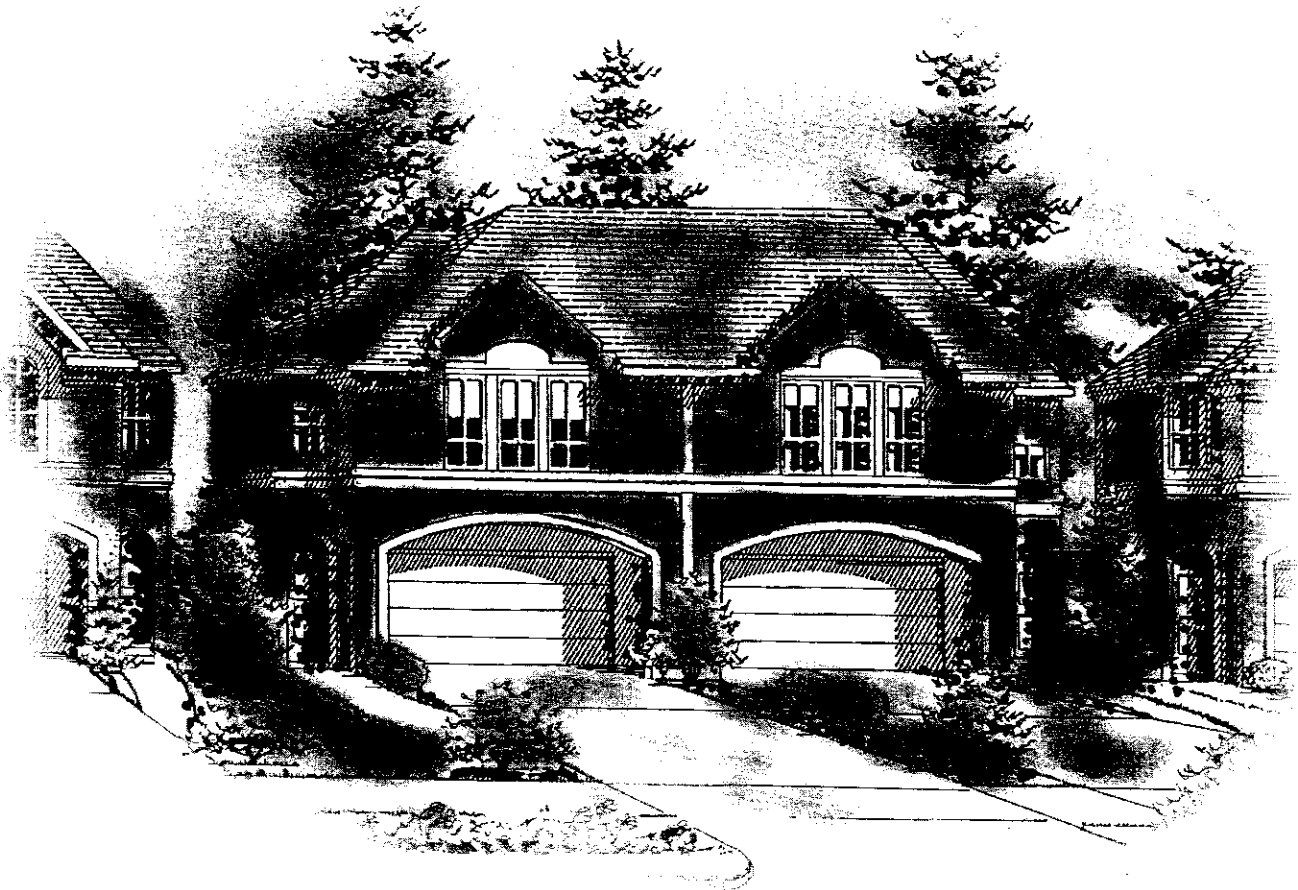


AFTON PLACE TOWNHOMES



1327 - 1337 Afton Street

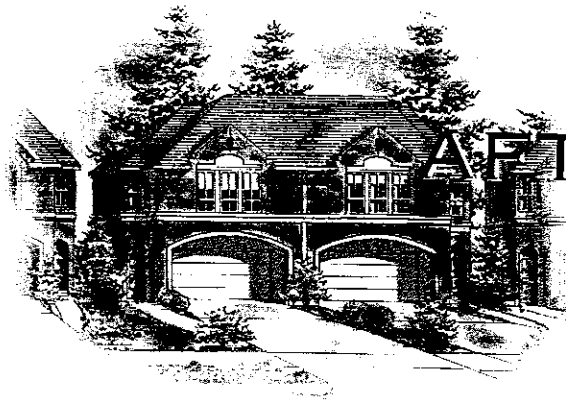
If a luxurious home style is what you are looking for, you'll love the elegant, sophisticated designs and quality afforded at Afton Place Townhomes. This prestigious development caters to those who appreciate the finer things in life.

Marketed by "The Bez Team"

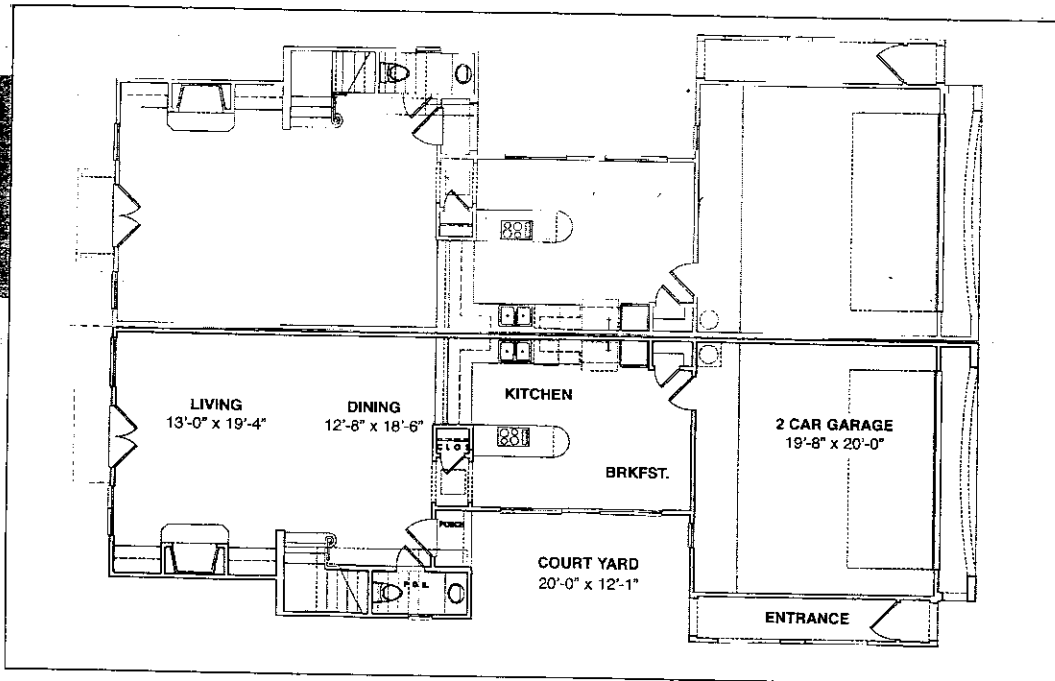
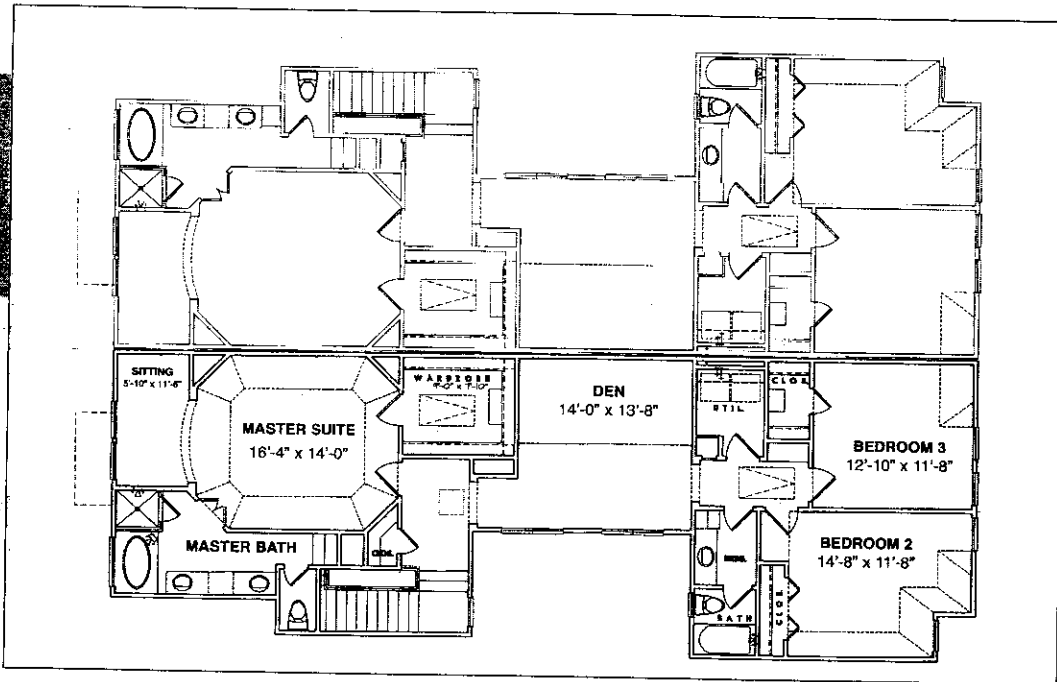
For additional information, call Betty Bezemer at Keller Williams Realty 713-461-8511



KELLER WILLIAMS®
R E A L T Y



AFTON PLACE



AMENITIES & SPECIFICATIONS

Conventional stucco exterior

Solid vinyl double glazed windows

Generous hardware allowance

Security, alarm systems, and electric gate release with intercom

Electrical outlets, recessed lighting, phone & TV outlets

Slab on bell bottom pier foundation

ELK presticque 30-year composition shingle roof

Generous landscaping allowance

One-year home warranty provided

SECOND LEVEL



Large whirlpool tub in master bath and large shower

Featuring Whirlpool tub and large shower in master bath

Large walk in closets throughout

Generous carpet allowance for bedrooms, closets and hallway

Raised ceilings on 2nd floor

Marble flooring throughout master bath and powder room; ceramic tile flooring throughout 2nd bath

Coffer ceilings in master bedroom, den, 2nd, and 3rd bedroom

Separate air conditioning system for each floor, including digital and programmable controls

Crown molding throughout ground floor

GROUND FLOOR



Gourmet kitchen includes built-in appliances, and granite countertop with 6" granite backsplash

Majestic fireplace with direct vent for living room

9-foot or 10-foot ceilings on ground floor

Private courtyard and large rear yard

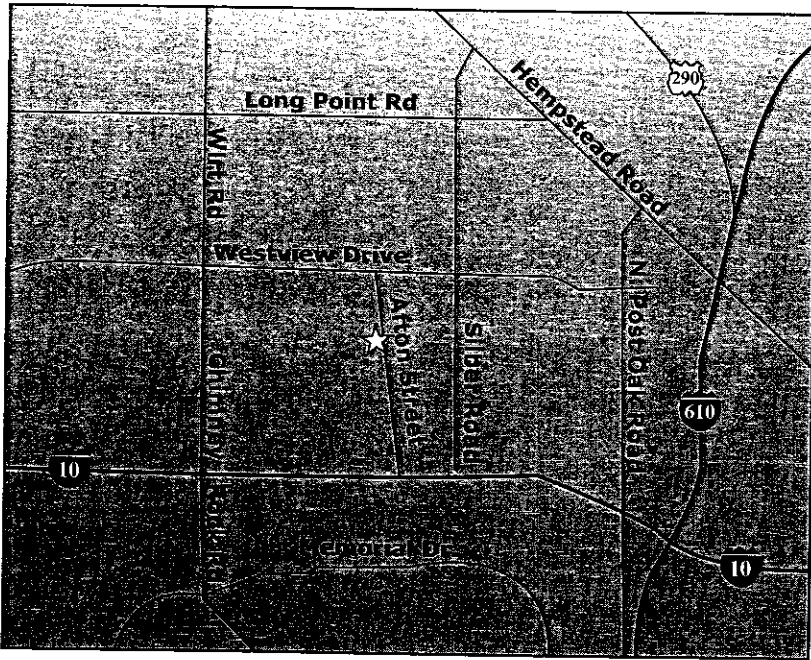
Red oak hardwood floor installed on 2x4 screeds in black mastic throughout main living area

Extensive double crown molding in living room, dining room, entrance area, and kitchen breakfast

Refer to back of brochure for additional information on location, schools, and the community.

THIS LOCATION MEANS

MORE TIME FOR LIVING...



Living at Afton Place Townhomes means living close to all the amenities Houston has to offer. Conveniently located off of Westview and Afton, with easy access to major highways such as Interstate 10, 610 and Highway 290. Beat the construction, and access Houston without having to enter major highway traffic. It's all close by: city life, country life, or beach life!

School-aged children are afforded high quality education as part of the Spring Branch ISD. In addition, there are fine private schools nearby.

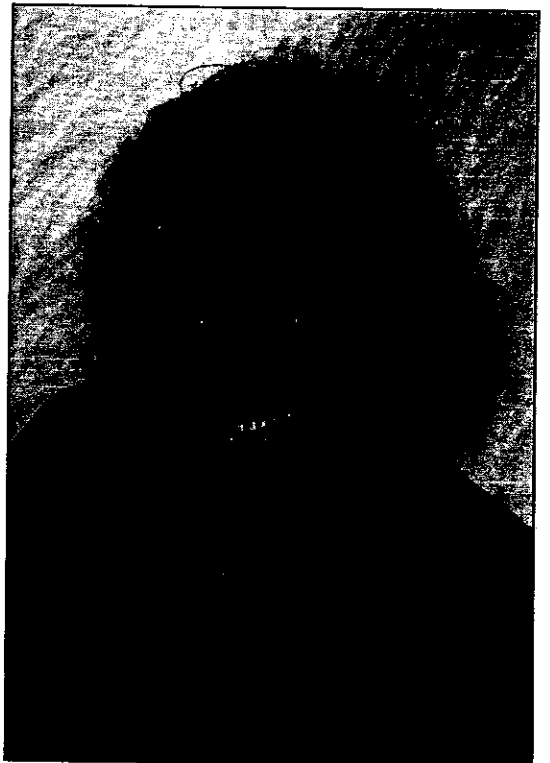
Around the corner and around the town, you will find all of the conveniences you expect: grocery, pharmacy, and full-service healthcare. Also access shopping and dining in the Galleria and Innerloop area.

AFTON PLACE TOWNHOMES

0 Down Financing for qualified buyers

Make an executive decision to see today and walk into your own private Oasis.

Call today to take advantage of pre-construction selections.



The Bez
TEAM
Simply The Best

Betty Bezemer, "The Bez Team"
Kathy James, Marketing Manager
Keller Williams Realty
Office: 713-461-8511
800-556-3393 ext. 2005
thebez@kw.com
www.bettybezemer.com