

Inspections

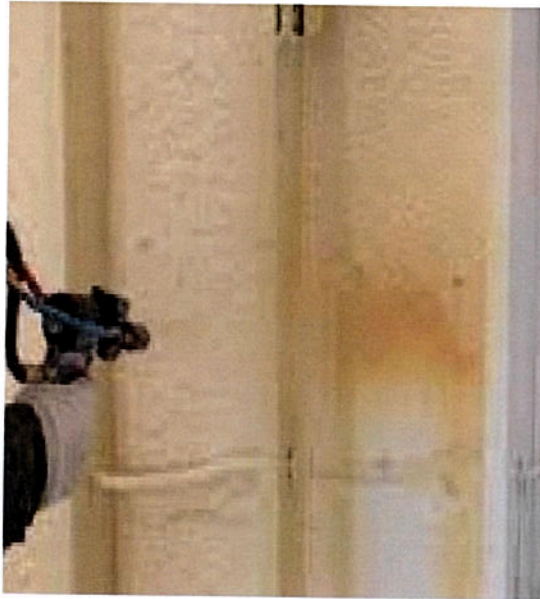
- **Foundation Pre-Pour Inspection**
 - form boards, plumbing, beam size, poly, cables, mastic areas, rebar, drainage trench, inspect per engineered foundation plans
- **Windstorm Inspection**
 - clips/strap areas, holdowns/anchor bolts, shear walls installed and constructed per the windstorm engineering plans
- **Pre-cover Inspection (Frame and Mechanical)**
 - full mechanical inspection per code (plumbing, HVAC, and electrical), framing inspection per engineered plans
- **Final Inspection**
 - full home inspection (per code), including final grade, cosmetic items excluded
- **Slab Elevation Survey (Compulevel)**
 - compulevel (conducted at time of final inspection)
- **Energy Star Version 3.0 (precover)**
 - insulation inspection, including fireblocking areas, poly seal areas
- **Energy Star Version 3.0 (final)**
 - duct blaster/blower door testing, and inspection and completion of the following Energy Star checklist:
 - THERMAL ENCLOSURE CHECKLIST
 - WATER MANAGEMENT CHECKLIST
 - HVAC RATER CHECKLIST
 - HVAC CHECKLIST (to be filled out by HVAC company)

HANSON BRICK



- Brick is a low maintenance, permanent, durable building product that won't rot, rust, burn, corrode, decay, encourage mould growth or need painting.
- Hanson Brick products are manufactured to meet or exceed ASTM and CSA standards for durability
- Extensive research and ongoing quality control testing ensures that Hanson Brick products meet their intended service requirements
- Hanson Brick's products are made from natural materials free of volatile organic compounds (VOCs), which results in better occupant health, comfort and productivity.
- Hanson Brick products' passive-solar qualities and thermal mass properties take advantage of the sun's energy for heating and cooling, keeping rooms cool in the summer and warm in the winter
- Hanson Brick products have a high sound proofing quality, shielding occupants from distracting outside noise
- Hanson Brick is completely made of recyclable materials.

Spray Foam Insulation



SEAMLESS AIR BARRIER

Superior home insulation begins by keeping outside air out & inside air in. The more better the "Air Seal" the better your insulation will be. Superior Air Seal begins & ends with foam.

A STRONGER HOME

The foam is sprayed into the stud wall cavity tying the studs and the exterior sheathing together as one, resulting in a stronger home. The same is done to the rafter cavities.

SOLID INVESTMENT

Foam provides energy savings of up to 40% in all climates and seasons.

HIGH R-VALUE

A higher R-Value will provide more insulation value per inch than a product with a lower value. The result is a rapid return on your investment through heating and cooling savings.

ENERGY STAR CERTIFIED



- ENERGY STAR certified new homes are designed and built to standards well above most other homes on the market today, delivering energy efficiency savings of up to 30 percent when compared to typical new homes. A new home that has earned the ENERGY STAR label has undergone a process of inspections, testing, and verification to meet strict requirements set by the U.S. Environmental Protection Agency (EPA), delivering better quality, better comfort, and better durability

Zurn Pex Water Lines



- More Sanitary – does not require acid flux or chemical adhesives
- Encrustation and Corrosion Resistant – because of Zurn PEX's smooth interior walls, minerals do not build up as with copper tubing
- Resistant to the harmful effects of aggressive chemicals such as chlorine. Zurn PEX tubing passes the difficult NSF P-171 (NSF-CL-TD) protocol for chlorine resistance.
- The life span of Zurn PEX tubing calculated from long term testing is in excess of 100 years.
- Zurn PEX Plumbing Systems can be installed in either a conventional branch and tee system or manifold system (optional) using QickPort® manifolds, where each fixture in the home receives a dedicated water source. This allows your plumbing contractor the flexibility to design a system that is perfect for your new home.
- In the past, freezing conditions marked the demise of rigid piping systems like copper and CPVC. When a copper or CPVC system freezes, there are typically multiple breaks in the system resulting in thousands of dollars of damage to your home or building. Zurn PEX tubing can expand allowing it to resist the damaging effects of freezing. Once it is thawed out, your Zurn PEX plumbing system will be just like new.
- Zurn PEX tubing does not amplify sounds like copper systems. And because it is flexible it will expand to absorb the annoying effects of water hammer prevalent in rigid piping systems. This results in a system that is quiet during operation.

HVAC System



- Carrier 15 Seer system with heat pump for high efficiency.
- Jump ducts
 - are used to balance air flow throughout the home. With a jump duct the air exits the room through the jump duct into the hallway, and then moves through the hallway to main return duct. Less leaks occur which means increased efficiency.

•Honeywell Programmable Thermostats

- Simplified programming system that allows separate programming for each day.
- Programmed to save up to 33% on annual heating and cooling costs (if used as directed)
- Maintains consistent comfort to the highest level of accuracy.
- Displays current humidity
- 5 Year Warranty



•Honeywell Media Filter

- Captures both microscopic particles like dust and smoke in addition to larger contaminants such as pet dander.
- Lasts up to 4 times longer than standard filter. Replace every 6 months versus monthly or quarterly.
- Up to 4 times more effective and is up to 85% more efficient at capturing airborne particles compared to a standard one-inch filter.
- 5 Year Warranty



****ONLY VALID ON NEW HOME PURCHASES AFTER JULY 1ST, 2013****

New "Rockport" Int. Doors

6' 8" doors have 5 panels



8' doors have 6 panels



James Hardie Building Products EXTERIOR TRIM AND SIDING

Non-Combustible

30-Year Warranty

Rot Resistant

Impervious to Termites

Resistant to Warping and Shrinkage

Will Not Melt With Exposure to Heat Source

Highly Durable and Resistant to Minor Impact

Resistant to Wind, Rain, Hail, Snow and Sun

Real Woodgrain Look and Feel

Easily Painted





The Therma-Tru Advantage EXTERIOR DOORS

- Lowest maintenance
Resists denting and scratching
- Won't rot, deteriorate or rust
- Energy efficient
- Can be painted or stained
- Won't warp, bow or twist
- Five times the insulation value of wood
- Secure

BUILDERS FIRST SOURCE VINYL WINDOWS



- Low E3 window glass
- Low e3 stands for low-emission cubed. It helps reduce the amount of ultraviolet (UV) light and radiation. By keeping the warm air out in summer and cool air out in winter, properly installed low-e class can reduce overall energy bills by up to one-third.
- Because low-e glass contains a microscopically thin metallic oxide coating, it helps suppress noise and provides protection against sun damage and fading.

Because our vinyl is formulated to withstand multiple quality assurance tests and real world testing, Spectrum vinyl windows and doors meet or exceed strict industry standards, so you can be assured of their lasting durability. With years of real outdoor performance experience, our vinyl is proven to be colorfast in the toughest high-heat and high humidity environments. Fusionwelded corners add strength and ensures weatherability. The low maintenance vinyl won't rust, corrode, pit, rot, peel or flake. The color of the window is fully integrated throughout the frame, and will never need painting. Just use soap and water to keep your vinyl windows looking clean.