

## Legends Run

### Included Features

#### Energy Conservation

Energy Star Certified Home  
 R-13 Exterior Wall Fiberglass Insulation  
 R-19 Ceiling Fiberglass Insulation - Sloped Ceiling  
 R-30 Ceiling Fiberglass Insulation - Flat Ceiling  
 40-Gallon Energy Efficient Gas Water Heater  
 High Efficiency 14-SEER Rheem HVAC with Digital Thermostat  
 R-6 Insulated Air Conditioning Duct Work  
 Polygel Sealant Around All Windows and Doors  
 Ultra Low-Flow Toilets & Low-Flow Shower Heads  
 Double Pane Low E Windows to Increase Energy Efficiency  
 Complies with the International Residential Code and  
 The International Energy Conservation Code  
 Thermal Integrity Package

#### Exterior Construction

American Made Quality Limestone Brick on Front  
 Cemplank Fiber Cement Siding (A James Hardie Building Product)  
 Hardiplank Fiber Cement Fascia and Ventilated Soffit  
 Louisiana-Pacific Smart Trim on Window and Corner Trim  
 Structural Engineered Post-Tension Foundation  
 Panelized Wall Systems to Assure Sound Construction, Plumbness,  
 Squareness, and Structural Strength  
 Engineered Roof Trusses for Maximum Strength  
 30 Year Architectural Shingles  
 Durable Thermosheath Sheathing in Brick Areas  
 Gutters on Front  
 Six Panel Fiberglass Front Door - Painted  
 Full Light Single Pane Fiberglass Rear Door  
 Double Pane; Divided Lite Front and 1/1 Sides and Rear Windows  
 White Finish with Low E Glass  
 Screens on All Operable Windows  
 Three-Tone Exterior Paint - Sherwin-Williams Pure Acrylic Primer  
 with Latex Satin Top Coat  
 3' x 3' Rear Step Out  
 Concrete Walks and Drives  
 Underground Utilities  
 Stone Address Block  
 Front and Rear Exterior Water Faucets  
 Front and Rear GFCI Outdoor Electrical Outlets

#### Safety/Security

Door Bell  
 Kwikset *Polo* Passage Knob with Deadbolt Lock in Satin Chrome  
 Inter-Connected Smoke Detectors with Battery Back-Ups  
 Steel Raised Panel Garage Door  
 Pre-wired for Garage Door Opener  
 Ground Fault Interrupter (GFI) & Arc Fault Protection  
 Exterior Lighting at Front, Rear and Garage Doors  
 Fully Enclosed Backyard Cedar Good Neighbor Fence (1x4)  
 Fence to Start at Rear Corners of Home with One Gate  
 on Garage Side  
 4 ft. Public Sidewalks

#### Landscaping

Fully Sodded Front and Side Yards to Fence  
 One - 30 Gallon Oak Tree  
 Professionally Designed Landscaped Front Yard  
 Assorted Shrubs per plan

#### Powder Room - per plan

Pedestal Sink with Octagon Beveled Mirror  
 Chrome Hardware and Chrome Delta Faucet with Acrylic Knobs

#### Interior Construction

Wood Grain Flush Panel Interior Doors  
 Kwikset *Polo* Knobs in Satin Chrome  
 3 1/4" Colonial Baseboards and 2" Colonial Door Casings  
 Stairs Feature Half Wall with 1" x 8" Painted Cap  
 Wall-to-Wall Shaw Industries Carpeting with 3/8" Carpet Pad (Level A)  
 Armstrong or Mannington Vinyl Flooring in Kitchen/Breakfast, Laundry,  
 Master Bath, Secondary Baths, Powder Bath, and Entry Areas (Level A)  
 Progress Lighting Fixtures (Level 1)  
 Telephone Jack in *Master Bedroom*, Kitchen and Gameroom/Loft  
 Cable TV Outlet in *Master Bedroom* and Main Living Area  
 Flat Latex Walls and Ceilings in Sherwin-Williams KB White  
 High Gloss Enamel Trim and Mouldings in  
 Sherwin-Williams High White  
 Eight Foot Ceilings Throughout  
 ClosetMaid Wire Shelving in All Closets  
 Garage Walls and Ceiling Fully Sheetrocked and Painted  
 Washer and Electric Dryer Connections in Laundry Room

#### Kitchen Appointments

30" Quality SeaCrest Cabinets Available in Two Finishes  
 Dual-Compartment Stainless Steel Sink  
 InSinkEerator 1/3 HP Garbage Disposal  
 Single Handle Chrome Delta Faucet with *Vegetable Sprayer*  
 Wilsonart Laminate Square Edge Countertops with 4" Cove Backsplash  
 Whirlpool Free-Standing Gas Range in White # SF114PXSQ  
 Whirlpool Large Capacity 5-Cycle Dishwasher in White # DU810SWPQ  
 Whirlpool Re-Circulating Venthood in White # RH2630XJQ  
 Recessed Ice Maker Connection at Refrigerator Space  
 Recessed Can Light in Breakfast Nook (per plan)

#### Master Bathroom Appointments

30" x 60" Porcelain Tub and Shower Combination with  
 Acrylic Tile Surround  
 Pressure Balancing Shower Valves  
 Cultured Marble Countertops with Ogee Edge and 4" Backsplash  
 and *Knee Space*  
 Integrated Cultured Marble Vanity Bowls (One per vanity area)  
 Ventilation Fan (per code)  
 Quality SeaCrest Cabinets - Same Finish as Kitchen  
 Chrome Hardware and Chrome Delta Faucet with Acrylic Knobs

#### Secondary Bath Appointments

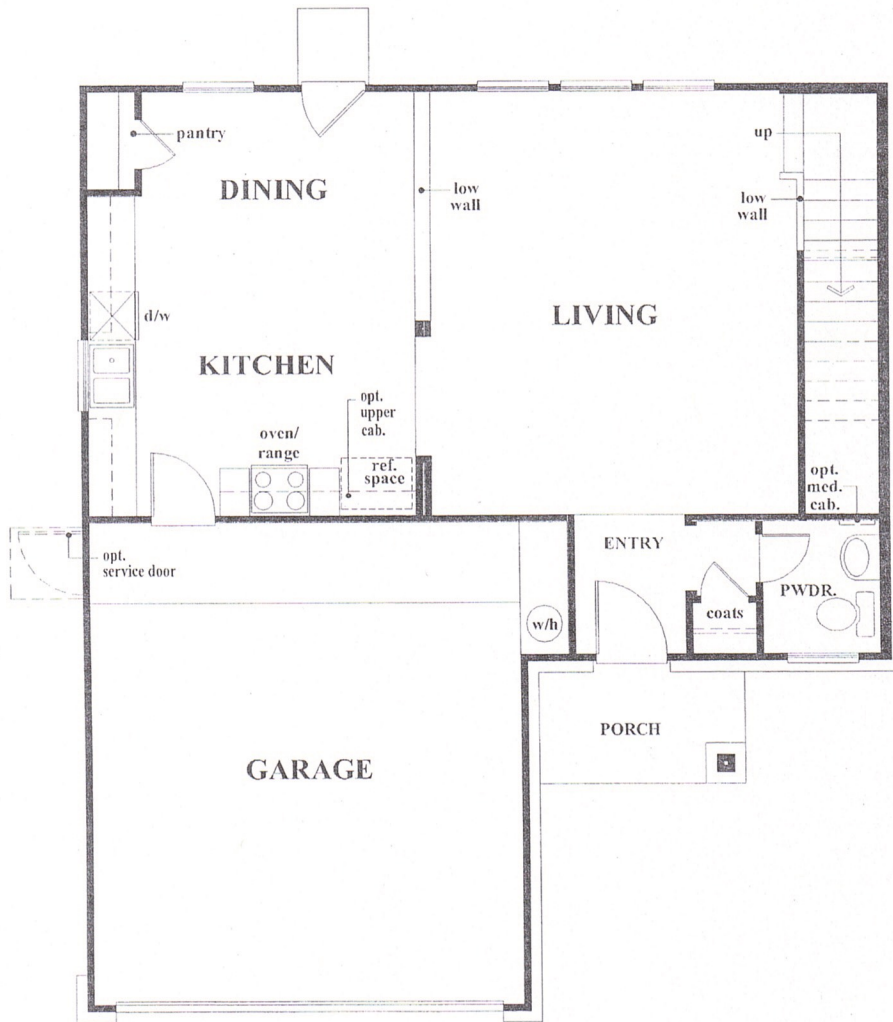
30" x 60" Porcelain Tub and Shower Combination with  
 Acrylic Tile Surround  
 Pressure Balancing Shower Valves  
 Cultured Marble Countertops with Ogee Edge and 4" Backsplash  
 Integrated Cultured Marble Vanity Bowls (One per vanity area)  
 Chrome Hardware and Chrome Delta Faucet with Acrylic Knobs  
 Quality SeaCrest Cabinets - Same Finish as Kitchen  
 Ventilation Fan (per code)

#### KB HOME Advantage

10-Year KB HOME Limited Warranty  
 "Sewer Cam" Video Inspection of Sewer Lines by Independent Inspector  
 Four Strategic Point Inspections Conducted Throughout the Construction  
 Process by Independent, Registered Engineers and FHA Inspectors  
 HomeTeam Pest Defense Tubes in the Wall (Service not included)  
 Toll-Free 24-hour Customer Care Line  
 Professional Design Assistance at KB Home Studio  
 Internationally Recognized Builder Listed on the NYSE  
 Fortune 500 Company

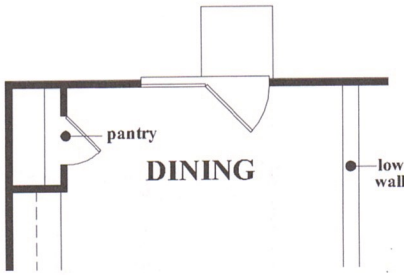
281-651-9737

kbhome.com  
 888-KB-HOMES

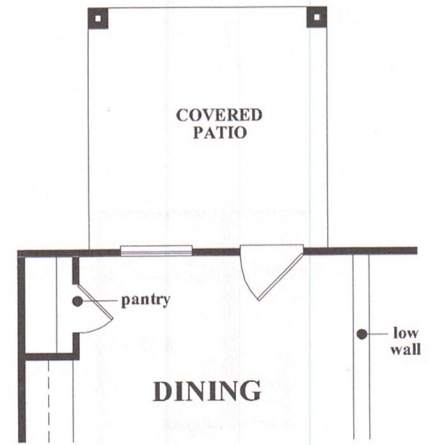


FIRST FLOOR PLAN

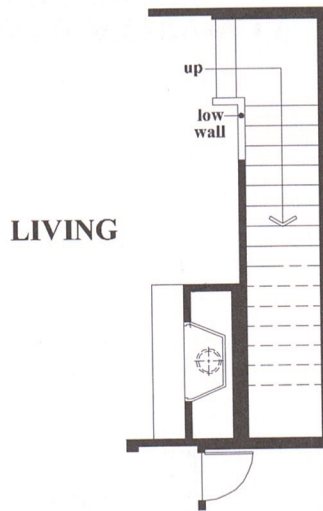




**OPT.  
ATRIUM DOOR  
AT DINING**

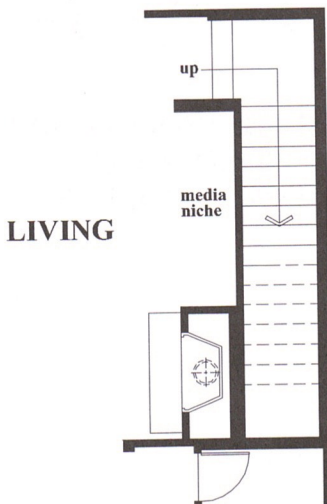


**OPT.  
COVERED PATIO  
AT DINING**



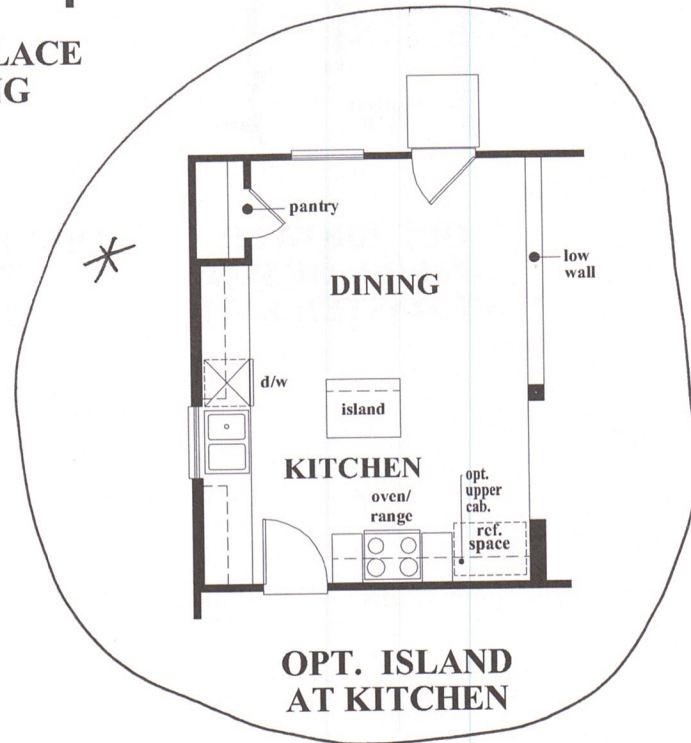
**LIVING**

**OPT. FIREPLACE  
AT LIVING**

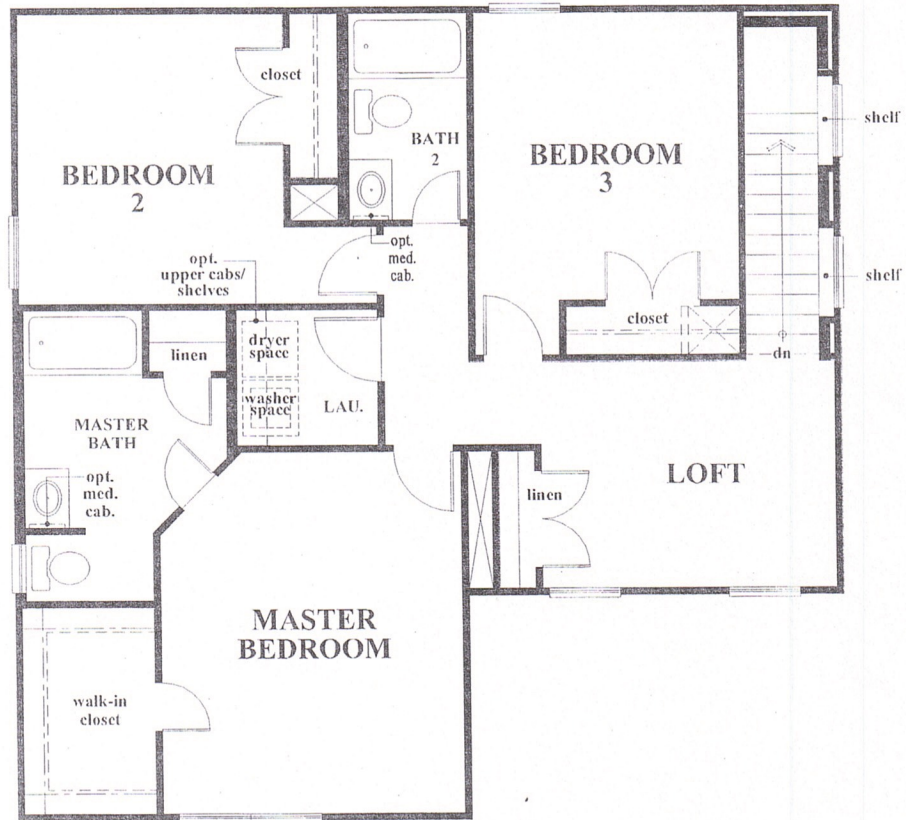


**LIVING**

**OPT 1. FIREPLACE  
W/ MEDIA NICHE  
AT LIVING**



**OPT. ISLAND  
AT KITCHEN**



## SECOND FLOOR PLAN

### OPTION FEATURES

MULTIPLE FIREPLACE OPTIONS AT LIVING

COVERED PATIO AT DINING

ISLAND AT KITCHEN

ATRIUM DOOR AT DINING

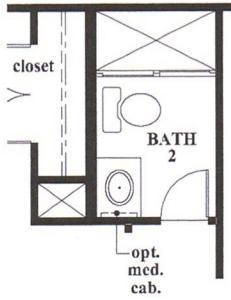
MULTIPLE MASTER BATH OPTIONS

BATH 2 SHOWER OPTION

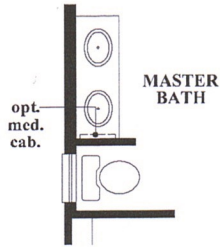


THE DISCOVERY COLLECTION

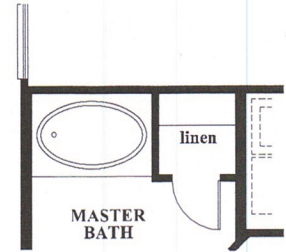
MAPLE (E-35-06) 04/25/06 Revision K



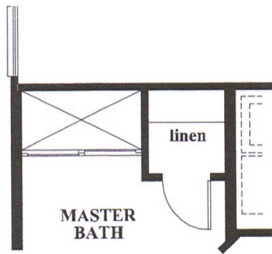
**OPT. SHOWER  
LIEU OF TUB  
AT BATH 2**



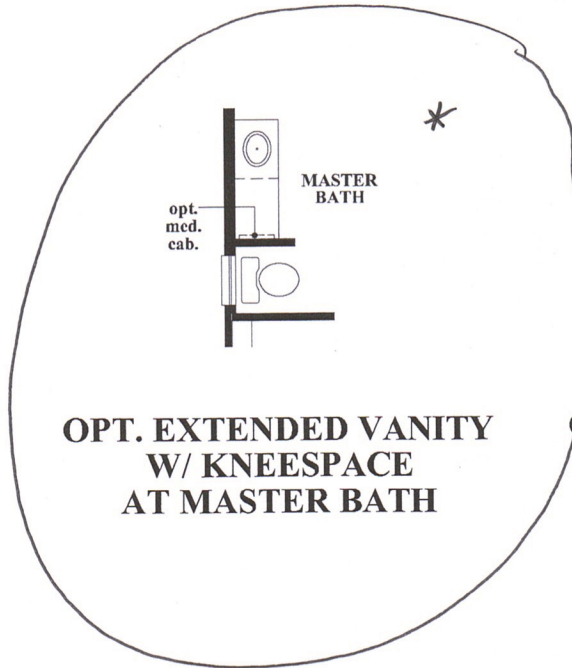
**OPT. DOUBLE LAV.  
AT MASTER BATH**



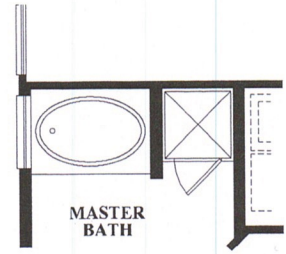
**OPT. 42" X 60" TUB  
AT MASTER BATH**



**OPT. SHOWER  
IN LIEU OF TUB  
AT MASTER BATH**



**OPT. EXTENDED VANITY  
W/ KNEESPACE  
AT MASTER BATH**



**OPT. SEPARATE TUB  
& SHOWER  
AT MASTER BATH**