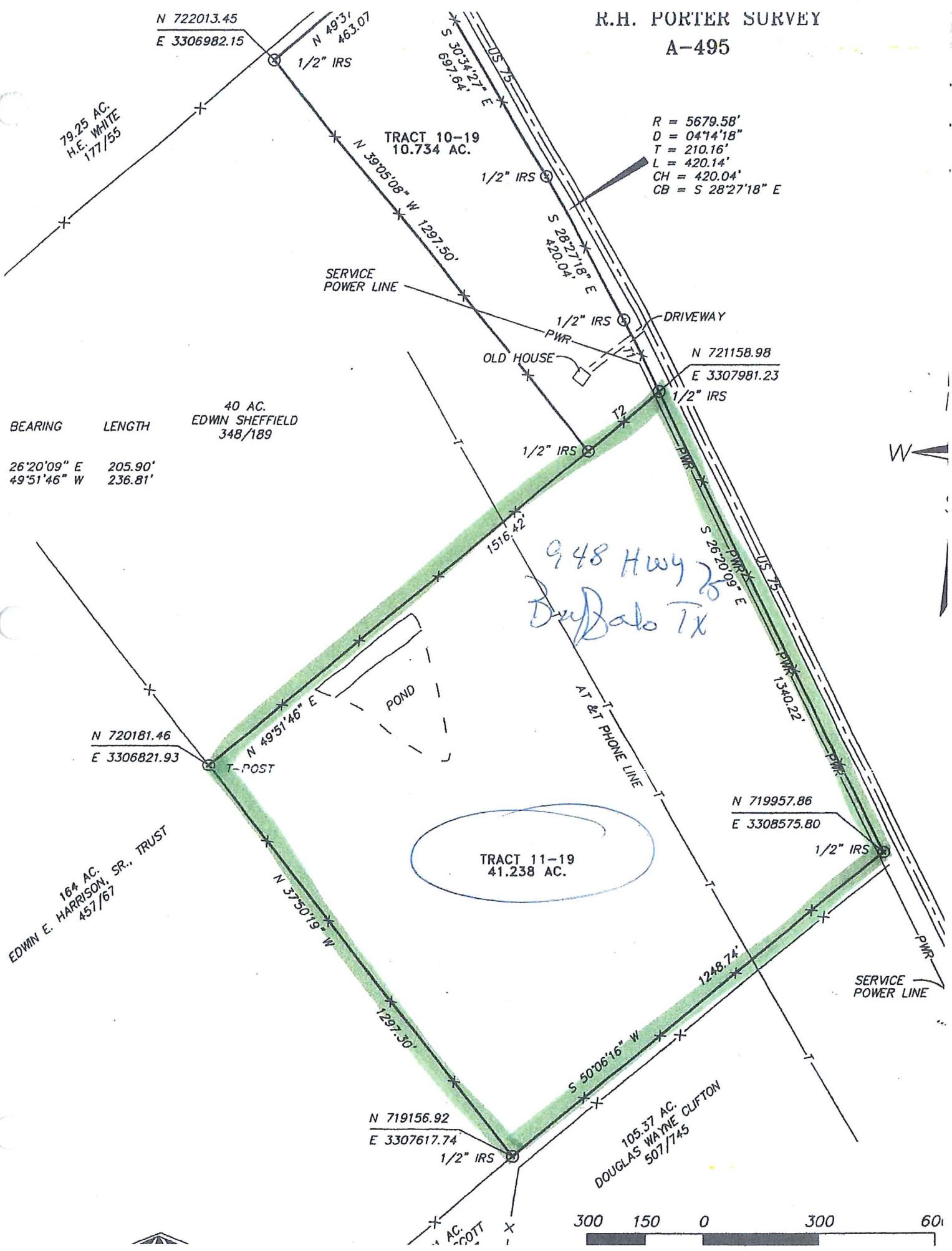


R.H. PORTER SURVEY

A-495

R = 5679.58'
 D = 04°14'18"
 T = 210.16'
 L = 420.14'
 CH = 420.04'
 CB = S 28°27'18" E

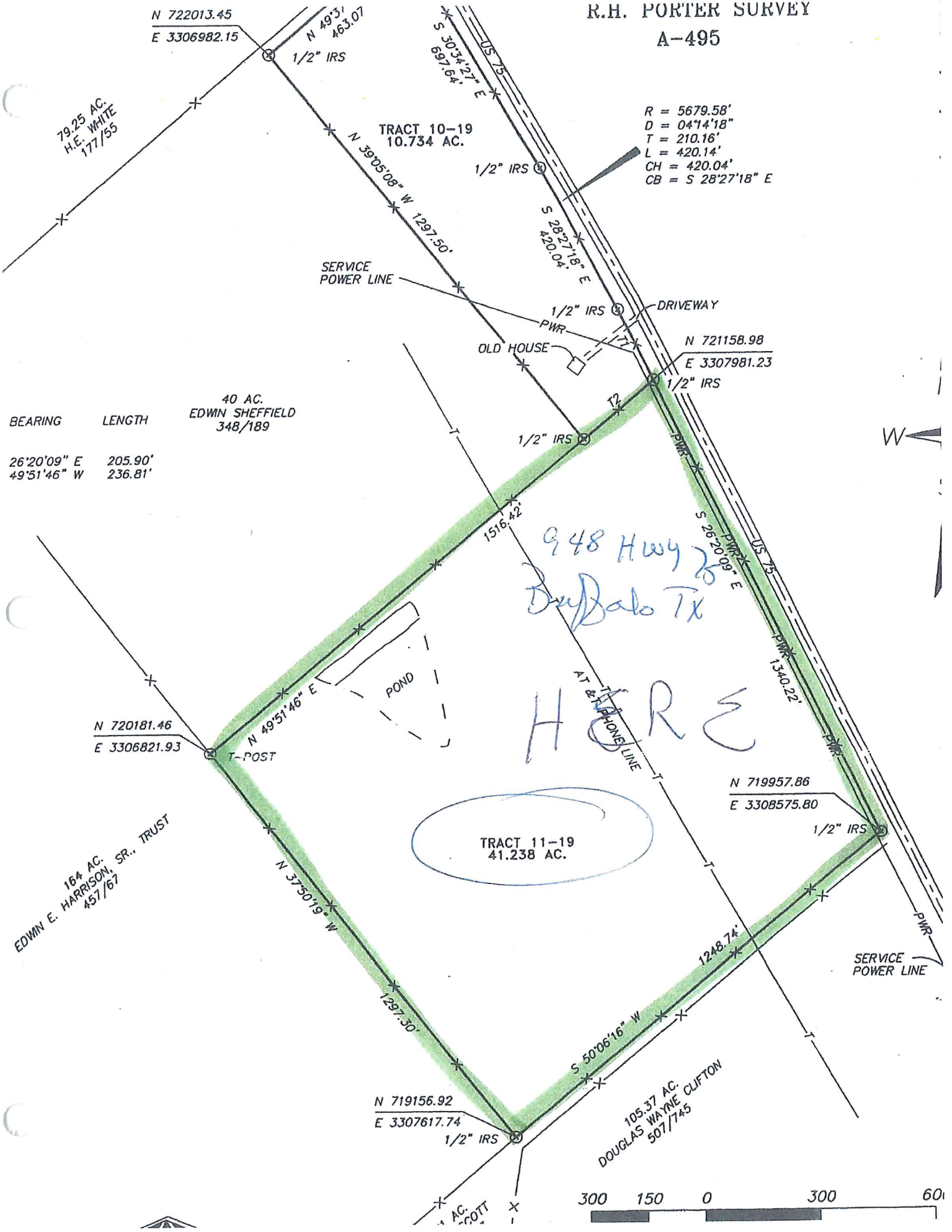
BEARING	LENGTH	40 AC. EDWIN SHEFFIELD 348/189
26°20'09" E	205.90'	
49°51'46" W	236.81'	



948 Hwy 26
 Buffalo TX



R.H. PORTER SURVEY
A-495



R = 5679.58'
D = 04°14'18"
T = 210.16'
L = 420.14'
CH = 420.04'
CB = S 28°27'18" E

BEARING	LENGTH	40 AC. EDWIN SHEFFIELD 348/189
26°20'09" E	205.90'	
49°51'46" W	236.81'	

948 Hwy 76
Buffalo TX
HERE

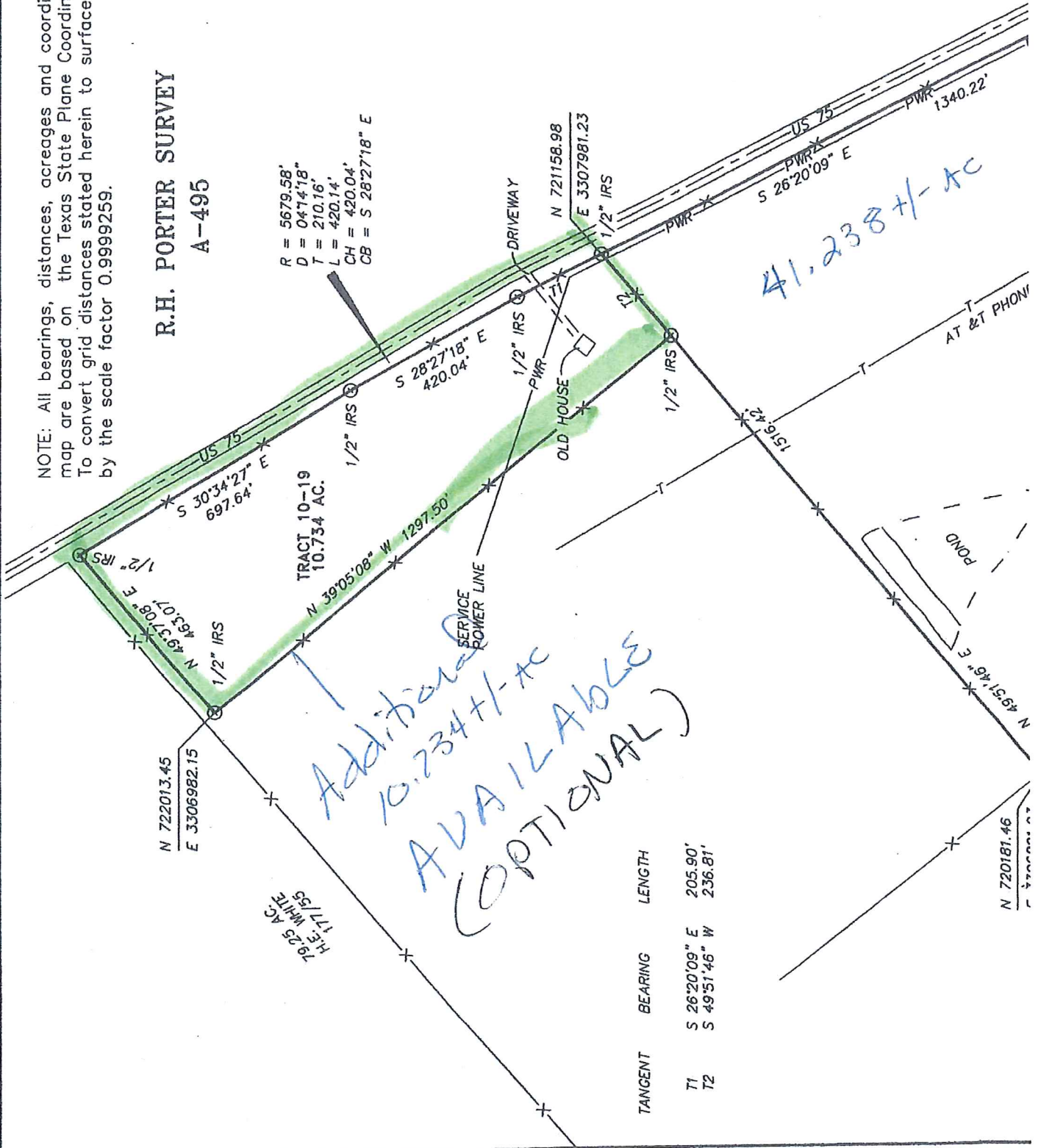
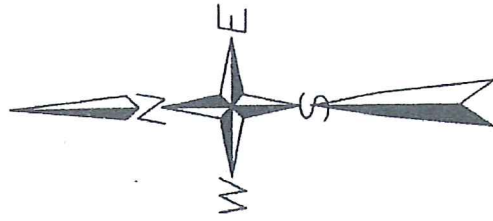
TRACT 11-19
41.238 AC.



NOTE: All bearings, distances, acreages and coordinates stated on this map are based on the Texas State Plane Coordinate System, Central. To convert grid distances stated herein to surface distances, divide by the scale factor 0.99992559.

R.H. PORTER SURVEY A-495

$R = 5679.58'$
 $D = 0474'18''$
 $T = 210.76'$
 $L = 420.14'$
 $CH = 420.04'$
 $CB = S 28^{\circ}27'18'' E$



TANGENT	BEARING	LENGTH
T1	S 26^{\circ}20'09'' E	205.90'
T2	S 49^{\circ}51'46'' W	236.81'