

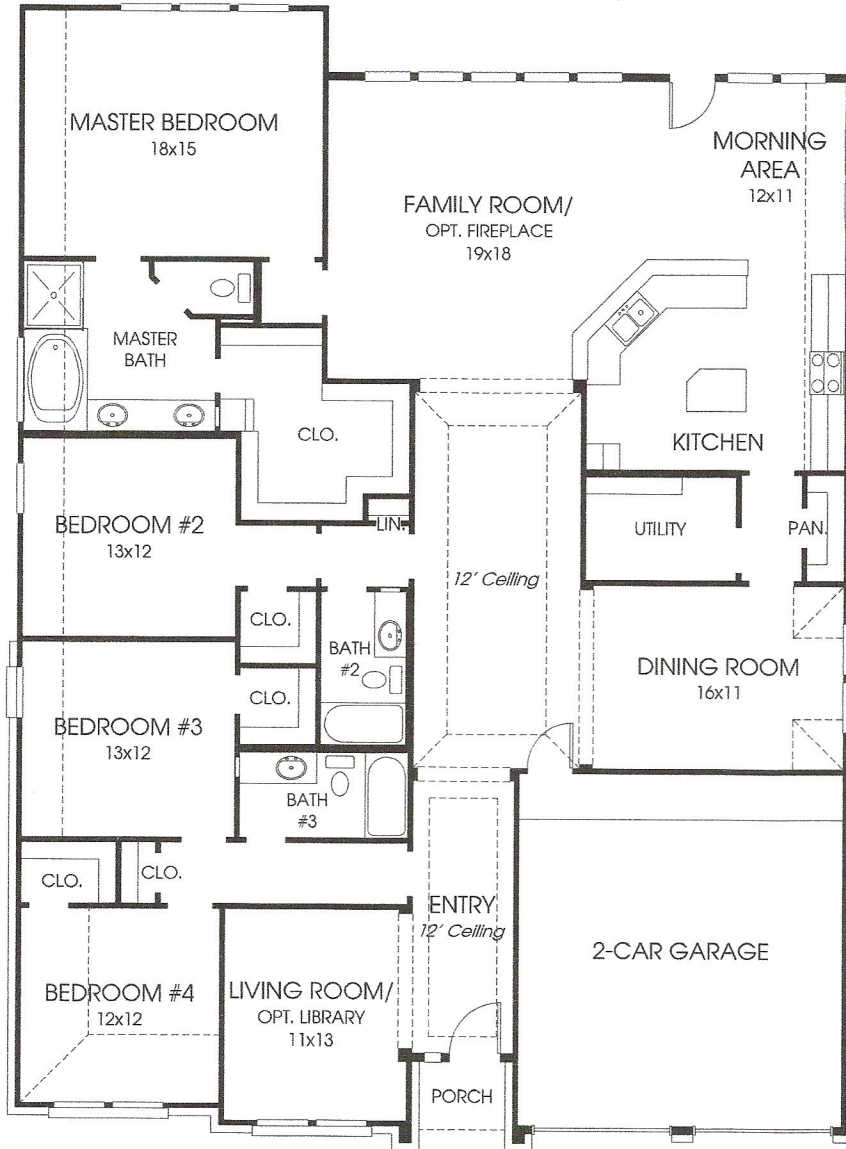
DESIGNS

Plan 2705W

This home contains approximately 2,705 square feet and includes four bedrooms and three baths.

Please call for an appointment

**Serious buyers only!



3rd Bay Garage & Backyard Patio

Not included: inside keyed deadbolt locks, refrigerators, furnishings, drapery, plants, decorator items and all other personal property being used in model homes. Builder reserves the right to make changes in the plans and specifications, and to substitute material of similar quality. Room dimensions indicate approximate inside area measurements.

05/21/2009 - Perry Homes (CL&CL-W)

PERRY HOMES





PLAN 2705W E-50

Plus 3rd Bay Garage

- Built in 2009 – 1 story
 - 2705 sq. ft.
- Westover Park Subdivision
 - 2 Subdivision Pools, Tennis Court
- Galveston County
- Cul-De-Sac
- Yearly HOA \$660
- Carpet in (4) bedrooms
- Tile Floors throughout
- 3 Full Baths
- Granite in kitchen and all 3 bathrooms
- Custom cabinets in kitchen and all 3 bathrooms