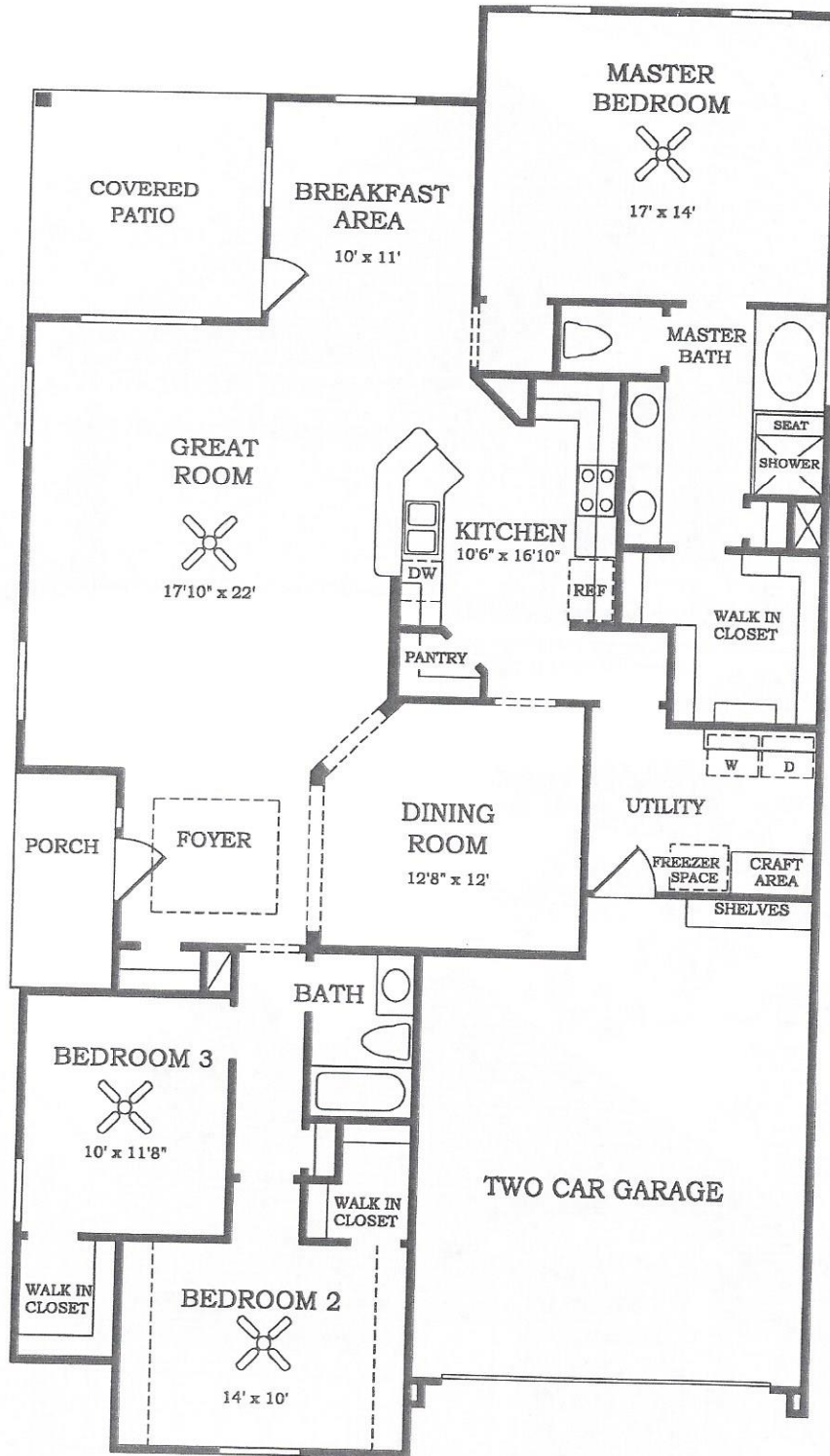


# The Versailles

MODEL #7250

THREE BEDROOMS, TWO FULL BATHS, COVERED ENTRY, GREAT ROOM WITH OPEN DINING ROOM, LARGE WALK-IN CLOSET IN MASTER BATH, SECLUDED COVERED PATIO, UTILITY ROOM WITH CRAFT AREA. TWO-CAR ATTACHED GARAGE WITH BUILT-IN STORAGE AREA.

APPROXIMATELY 2070 SQ. FT.



**Lennar**  
Homes, since 1954

5/14/99



In our continuing efforts to improve our product, Lennar Homes reserves the right to revise specifications and dimensions without notice. All dimensions are approximate. Layout may be revised. Landscaping shown is for conceptual purposes only. Copyright © 1995 Lennar Homes, Inc. All rights reserved 3/96

