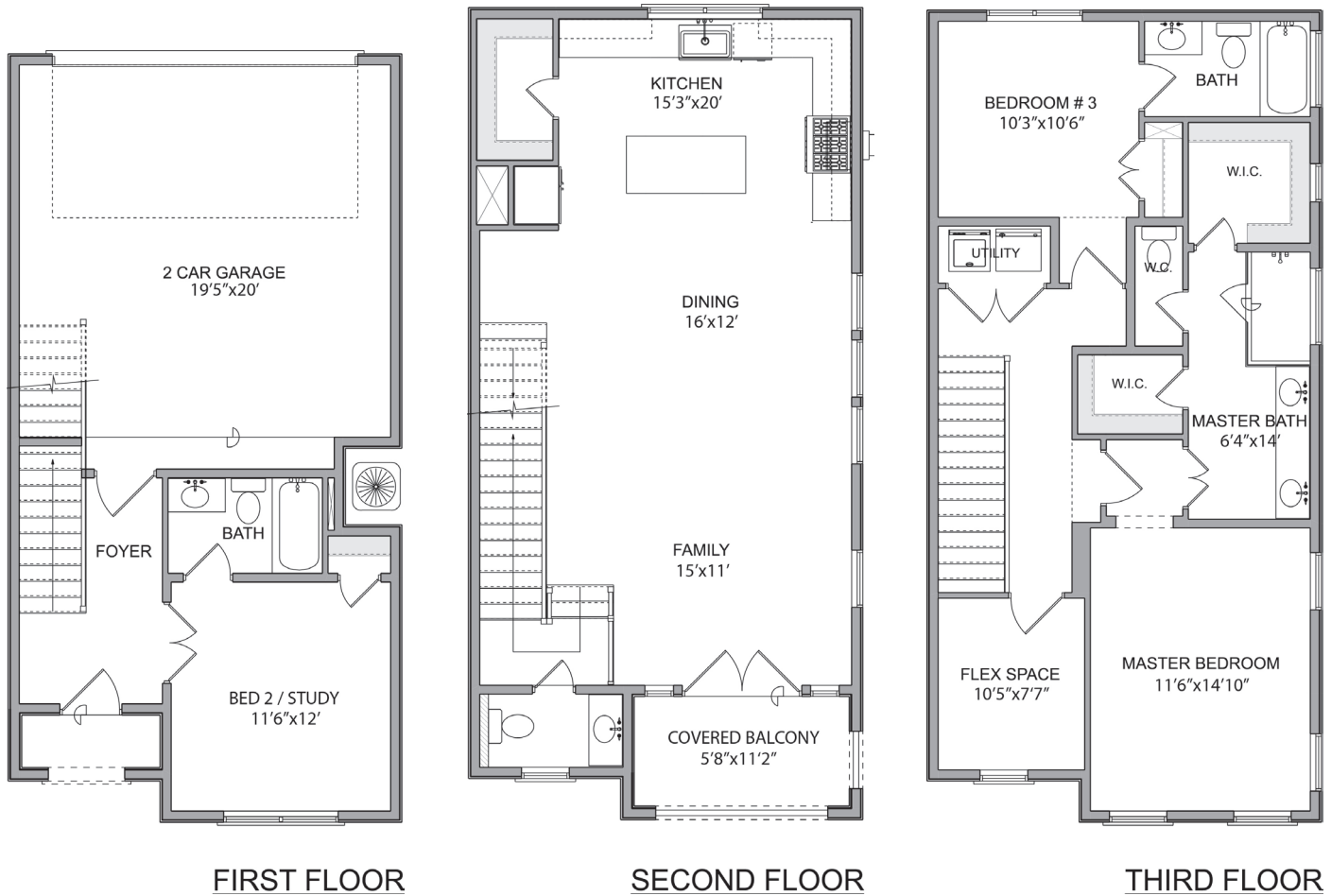


FORTEZZA FLOORPLAN EAST END ON THE BAYOU, PHASE 3



3-STORY, 3 BEDROOMS, 3 1/2 BATHS, 2-CAR GARAGE, 1928 SQ FT PER BUILDER

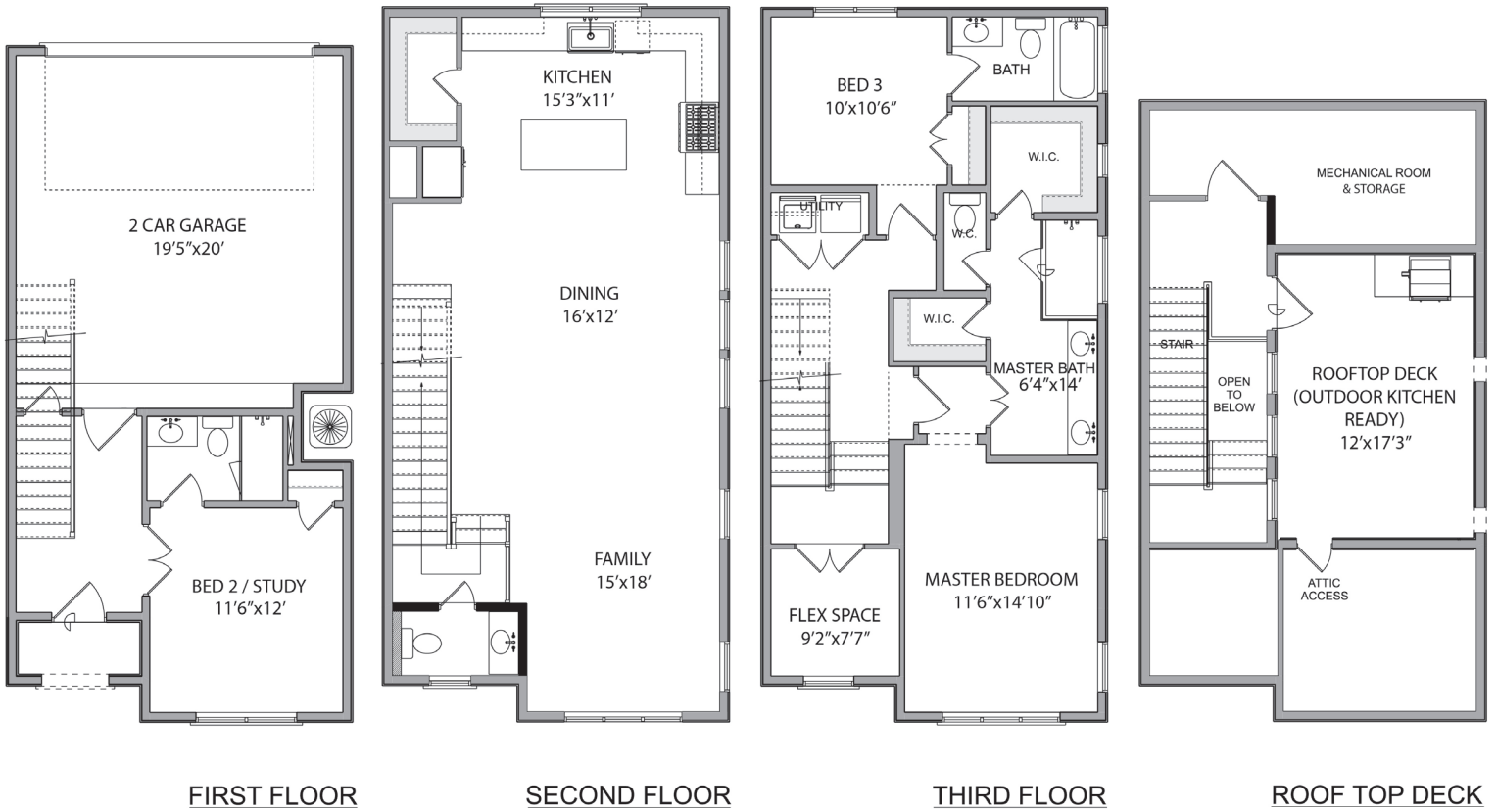


(713) 840-1051
info@dorado-builders.com



CASTELLO FLOORPLAN EAST END ON THE BAYOU, PHASE 3

4-STORY, 3 BEDROOMS, 3 1/2 BATHS, 2-CAR GARAGE, 4TH FLOOR LANAI, 2125 SQ FT PER BUILDER



MEDITERRANEAN INSPIRED HOMES BROUGHT TO YOU BY DORADO BUILDERS WITHIN THE EAST END ON THE BAYOU MASTER PLANNED URBAN DEVELOPMENT, LOCATED ON THE SOUTH BANK OF HOUSTON'S HISTORIC BUFFALO BAYOU LESS THAN 1 MILE FROM THE CENTRAL BUSINESS DISTRICT, SPORTS STADIUMS, & ENTERTAINMENT.

- QUALITY AND ENERGY EFFICIENT CONSTRUCTION
- GREAT VIEWS OF DOWNTOWN
- CONVENIENT LOCATION TO WORK & PLAY
- CONNECTED TO BUFFALO BAYOU HIKE AND BIKE TRAILS
- (ACROSS BAYOU FROM THE EAST RIVER PROJECT)
- FIBEROPTIC INTERNET/"SMART" HOMES

(713) 840-1051
info@dorado-builders.com

