

# 293

## BRYN MAWR

### C I R C L E



Custom built with elaborate craftsmanship and stunning architectural features, this timeless and elegant European manor by renowned Architect Robert Dame is a true masterpiece. Nestled among mature oak trees and manicured English gardens, this superb residence exudes old world charm complimented by a slate roof, limestone with brick accents, antique cobblestone driveway and extensive landscape lighting. Customized interiors include wine vault, antique re-claimed beams, soaring ceilings, antique plank flooring, aged limestone, groin and rotunda ceilings, Venetian plaster, stunning chandeliers, superbly crafted mahogany millwork, European chef's kitchen with large island and Lacanche Range, controlled lighting system, sound system and security system with cameras. Stunning master retreat with spa-like bath and his/hers customized closets. Loggia with outdoor kitchen, fireplace and dining area, meditation garden, fruit and herb garden, resort style pool and spa. This truly is an exceptional home!

**BUILDER:** CORBEL CUSTOM HOMES

**ARCHITECT:** ROBERT DAME

**BEDROOMS:** 5

**BATHS:** 5 FULL, 2 HALF

**YEAR BUILT:** 2007

**FOUNDATION:** SLAB ON BUILDERS PIER

**EXTERIOR:** LIMESTONE ROCK AND BRICK ACCENTS

**ROOF:** REAL VERMONT SLATE

**LOT SIZE:** 27,263 SQ. FT. PER SURVEY

**HOME SIZE:** 7,442 SQ. FT. PER HCAD

**GARAGE:** 3, ATTACHED GARAGE



**HERITAGE**  
TEXAS PROPERTIES

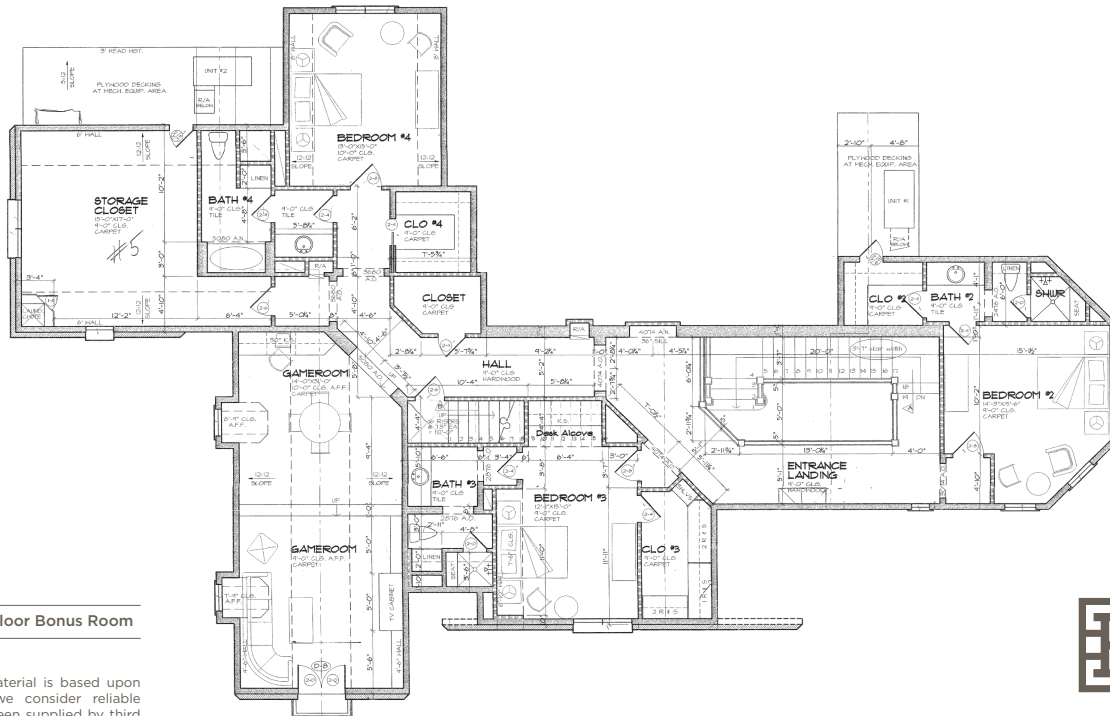
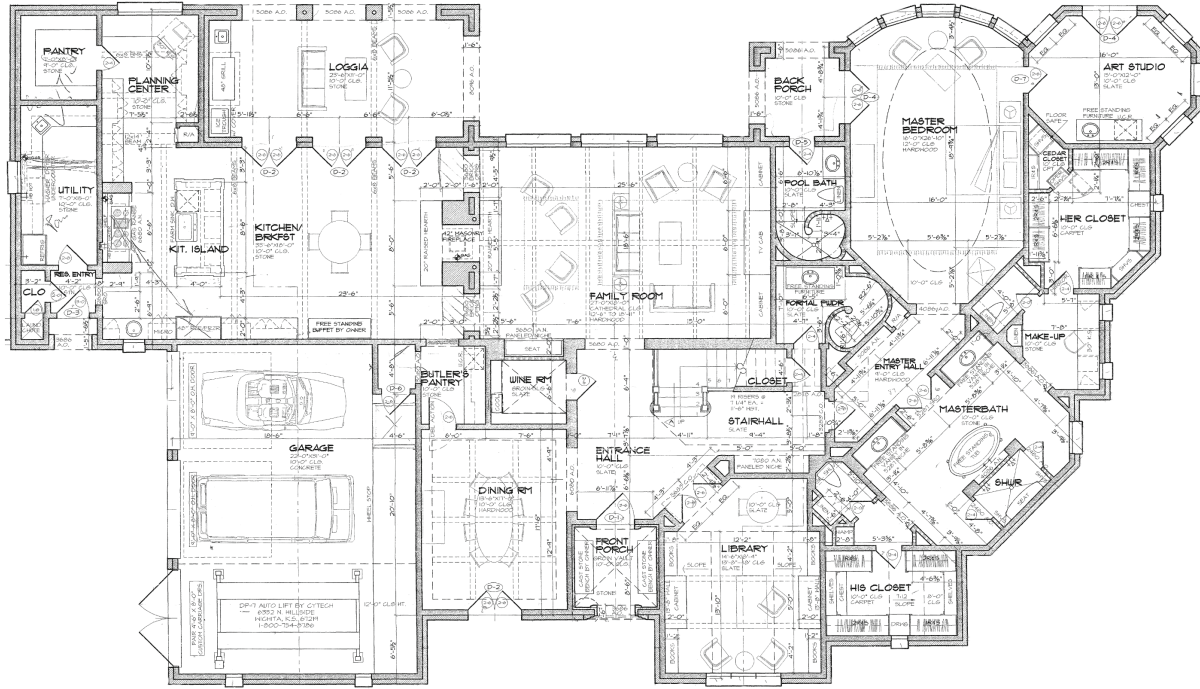
**Please Note:** This material is based upon information which we consider reliable but because it has been supplied by third parties, we cannot represent that it is accurate or complete and it should not be relied upon as such.

# 293

## BRYN MAWR

### CIRCLE

### Floor plans



Note: Large third floor Bonus Room

Please Note: This material is based upon information which we consider reliable but because it has been supplied by third parties, we cannot represent that it is accurate or complete and it should not be relied upon as such.



**HERITAGE**  
TEXAS PROPERTIES

# 293

## BRYN MAWR C I R C L E

### *Special Features*

#### **General**

- Custom-built inspired by Castle in Yorkshire, England
- Sought-after Bryn Mawr Subdivision in prestigious Hunters Creek
- Interior architecture exquisitely designed
- Security system with outdoor cameras
- Antique wide plank Oak flooring imported from Europe
- 10' ceilings down, 9' ceilings up
- Antique reclaimed beams throughout
- Deep baseboards throughout
- English hardware throughout - Sheplers
- Grand Dual-sided fireplace
- Two Tankless OnDemand water heaters
- Solid Mahogany doors
- Copper gutters with copper downspouts
- Copper roof stacks, chimney pots and vents
- Extensive Mosquito Misting System
- Sprinkler System
- Reverse Osmosis drinking water system and softener
- Interior Lighting System with timers, dimmers and programmable scenes
- Built-in Speakers throughout
- Central Audio/Video System
- Attic Storage on 2nd and 3rd floors

#### **Front Exterior**

- European style front door with iron accents and hardware
- Limestone Rock and antique brick accents
- Antique Cobblestone Driveway and Walk (used in the ballast of ships from Europe to Chicago to help balance the ship)
- Authentic Gas lanterns throughout
- Custom forged and designed iron gates with antique weathered finish by Blacksmith Tim Buchanan
- Extensive Accent Landscape Lighting

#### **Reception Hall | 23' x 15'**

- European slate flooring
- Formidable Mahogany Block Paneled wall niche and staircase with carved newel posts and custom forged handrail
- Custom designer stair runner
- Antique Finnish Minutemen design chandelier from Finland
- Stair Metal Art Commissioned by artist Mark Fox. Upside down reflection of the antique Finnish Chandelier

#### **Dining Room | 17' x 15'**

- Venetian plaster walls and ceiling by Segreto
- French doors open to front veranda
- European accent stained glass window to Wine Vault
- Carved Mahogany wood beamed ceiling
- Open to Butlers Pantry and main Reception Hall

#### **Powder Room**

- Venetian plaster walls and ceiling by Segreto
- Antique mahogany door with "Le Pissor" Brass sign
- Antique wall sconces and crystal chandelier
- Designer custom faucet and fixtures
- Antique colored cement tile floor
- Antique vanity chest
- Designer Mirror

#### **Butlers**

- Marble countertops
- Custom mahogany built-ins
- Lighted leaded glass upper cabinetry
- Under cabinet lights and outlets
- Stone flooring

#### **Wine Vault**

- Located off Reception Hall
- Holds 250 Bottles
- Refrigerated cooling system
- Antique Door and Hardware
- European slate flooring
- Brick interior
- Custom Built-ins to showcase wine
- Groin Vaulted ceiling

#### **Mud Room | Pantry**

- Built-in lockers with drawers
- Stone flooring
- Venetian plaster walls by Segreto
- Large walk-in pantry
- Custom Built-ins
- Connection for extra Refrigerator/Freezer

#### **Kitchen Office**

- Located between kitchen and Utility
- Built-in Desk with custom cabinetry
- Under counter lighting
- Picture window over-looking fruit tree and herb garden

#### **Kitchen | 18' x 18'**

- Antique reclaimed ceiling beams
- Marble countertops and cobbled limestone Backsplash
- Large central island with pewter tiles and trim
- Custom-designed vent hood with antique reclaimed wood beam
- Leaded glass upper cabinets with under cabinet lighting
- Polished nickel fixtures
- Built-in 48" refrigerator and freezer with custom fronts

- Cooks dream Lacanche dual fuel range stove, ovens and warming cupboard
- Antique Tile Backsplash above stove from Lyon, the culinary center of France
- Miele dishwasher
- Built-in Microwave
- Built-in Ice Maker
- Large Antique Pot Rack with lighting
- Large under-mount farm sink
- Small copper vessel and under mount vegetable sink
- Custom Built-in cabinetry with soft close drawers and doors
- Limestone Rock accent wall with Arch opening

### ***Breakfast Room | 18' x 13'***

- Large dual-sided gas log fireplace
- Antique iron chandelier
- Limestone flooring
- Antique French doors from a Chateau, custom fitted to room
- Opens to outdoor loggia and great room

### ***Great Room | 27' x 18'***

- Intricate 19' cathedral ceiling with mahogany beams and slats
- Dual-sided gas log fireplace with grand carved stone surround
- Iron chandeliers custom made by blacksmith Tim Buchanan to replicate the chandeliers from Banff Springs Hotel. The hotel gave the previous owner, who originated from Wales, the renderings and thus they were commissioned.
- Antique reclaimed wide plank oak flooring from Europe
- Large arched windows overlooking beautiful pool area

### ***Formal Study | 18' x 14'***

- Double entry doors with European antique brass hardware
- Soaring Cathedral ceiling with mahogany wood beams
- Venetian plaster walls by Segreto
- Custom mahogany built-ins with lighted cabinets
- European slate floors
- Large picture window
- Secret door leading to his master closet

### ***Master Suite | 27' x 16'***

- First floor master suite
- Rotunda ceiling which took one month to intricately carve by hand
- French door and windows overlooking backyard
- Custom window treatments
- Venetian plaster walls by Segreto
- Meditation Room off master with access to garden

### ***Master Bath | 17' x 14'***

- Etched glass double doors to match rotunda
- His and Hers separate vanities
- White Marble countertops
- Custom cabinetry with designer fixtures

- Large walk-in shower with his and hers shower heads and jets
- Frameless glass shower door and inlay medallion
- Free standing large soaking tub
- Antique crystal chandeliers
- Separate Ladies dressing room with custom vanity
- Leaded glass accent windows
- Large stained-glass Tudor rose motif window

### ***Her Master Closet | 13' x 12'***

- Completely Customized
- Mahogany built-ins
- Leaded glass window
- Customized lighting
- Shelving, drawers, glass fronts

### ***His Master Closet | 11' x 10'***

- Completely Customized
- Mahogany built-ins
- Leaded glass window
- Shelving, drawers, glass fronts
- Secret door to study

### ***Meditation Room | 15' x 12'***

- Located off Master Bedroom
- French doors open to meditation garden
- Limestone floors
- Hand painted beamed ceiling
- Built-in furniture grade cabinetry with sink
- Undercounter Refrigerator
- Private space for home office, art studio, nursery or exercise

### ***Utility Room | 13' x 10'***

- Washer and Dryer connections
- Large farmhouse sink
- Antique accent tiles
- Hanging rods
- Natural stone flooring
- Custom built-ins with ample storage
- Open to home office

## **SECOND FLOOR**

### ***Gameroom | 31' x 14'***

- Built in Computer desk with open shelving on top
- Beamed ceiling and hand painted walls
- Undercounter Refrigerator
- Charming Dormer style windows
- French doors to Juliette Balcony

### ***Bedroom 2 | 15' x 14'***

- 9' ceilings
- Wide plank hardwood floors
- Plantation Shutters

### ***Ensuite Bathroom 2***

- Granite countertop
- Designer fixtures
- Walk-in frameless shower with custom tile
- Walk-in closet

### ***Bedroom 3 | 15' x 12'***

- 9' ceilings
- Wide plank hardwood floors
- Plantation shutters
- Built-in Desk
- Wall nook for Bed
- Large walk-in closet

### ***Ensuite Bathroom 3***

- Walk-in frameless shower with custom designed tile
- White marble counter
- Designer fixtures
- Large custom mirror with wall sconces

### ***Bedroom 4 | 15' x 13'***

- 9' ceilings
- Wide plank hardwood floors
- Large arched picture window
- Plantation Shutters

### ***Ensuite Bathroom 4***

- Granite counter
- Tub/shower with custom designed tile
- Designer fixtures
- Large custom mirror with two wall sconces
- Walk-in closet

### ***Bedroom 5 | 17' x 15'***

- 9' ceilings
- Wide plank hardwood floors
- Plantation Shutters
- Large walk-in closet
- Jack and Jill Bath with Bedroom 4

### ***Third Floor Media or Flex | 40' x 14'***

- Arched Windows
- Custom carpet
- Recessed Lighting

## **OUTSIDE**

### ***Loggia | 26' x 11'***

- Covered outdoor entertaining
- Woodburning fireplace with Limestone rock surround
- Limestone floors
- Decorative gas lanterns
- Outdoor kitchen with Gas Grill and undermount stainless sink

### ***Pool***

- Salt-water Custom Pool and Spa
- Decorative wall fountain
- Limestone Decking
- Water fountain features
- Customized pool lighting
- Full size outdoor pool bath

### ***Backyard***

- Sprinkler System
- Extensive Mosquito Misting System
- Area drains in backyard
- Up-lighting on trees
- English Garden Design
- Stone fountain hand carved in France in Meditation Garden
- Side yard for play area
- Fruit tree and herb garden off of Kitchen
- Handmade custom garden gate and garden arch in antique weathered finish by Blacksmith Tim Buchanan

### ***Motor Court***

- 3-car garage
- Sheetrock and painted
- Built-in storage
- Painted Epoxy floors
- Wood stained carriage doors
- Decorative gas lanterns
- Custom Automatic handmade driveway gate by Blacksmith Tim Buchanan

### ***EXCLUSIONS:***

- Dining Room Wall sconces
- Great Room Window Treatments
- Master Bedroom Mirrored Wall Sconces
- All Potted Plants and containers except for two on pool fountain wall



**HERITAGE**  
TEXAS PROPERTIES

---

**Please Note:** This material is based upon information which we consider reliable but because it has been supplied by third parties, we cannot represent that it is accurate or complete and it should not be relied upon as such.